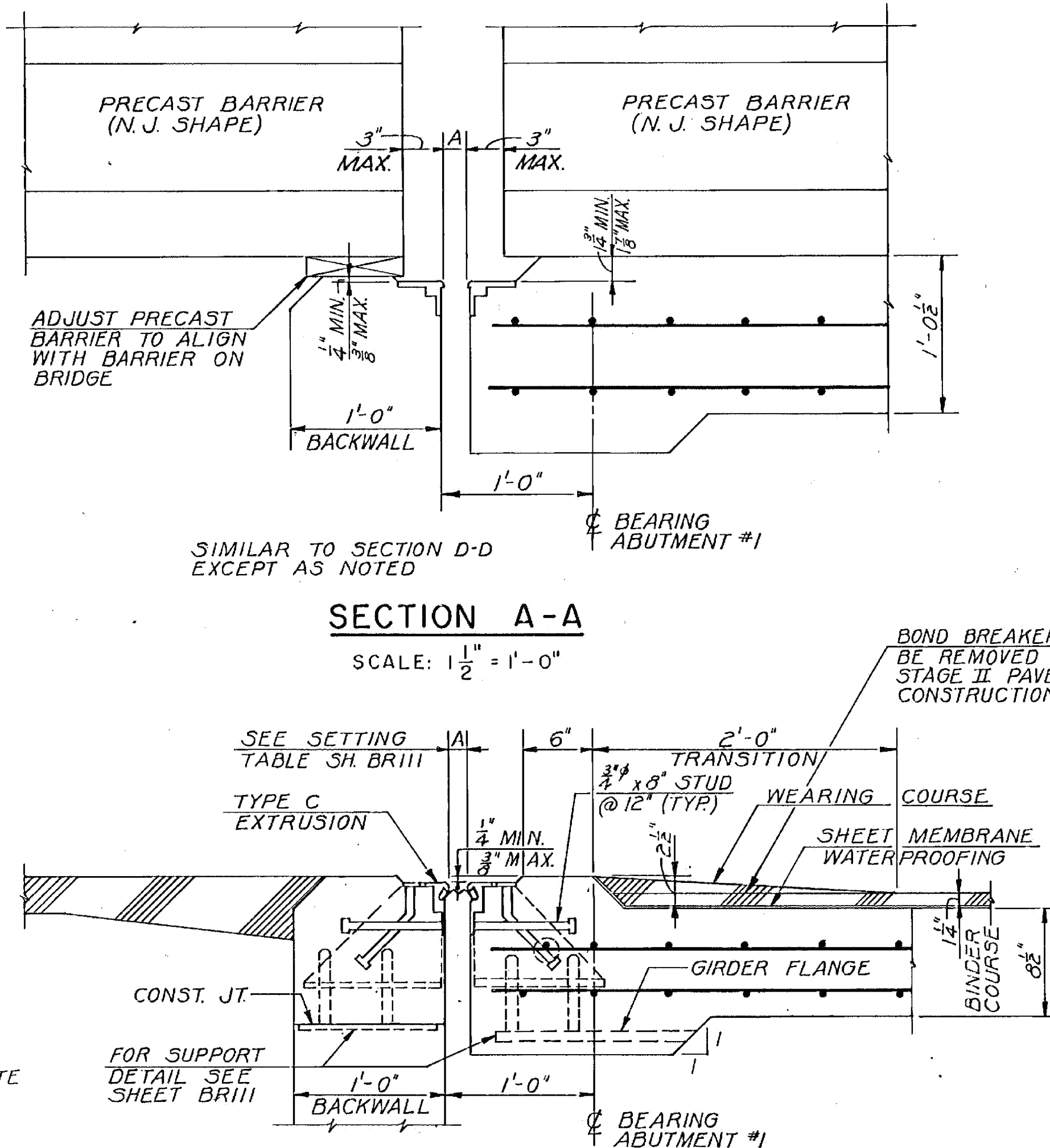


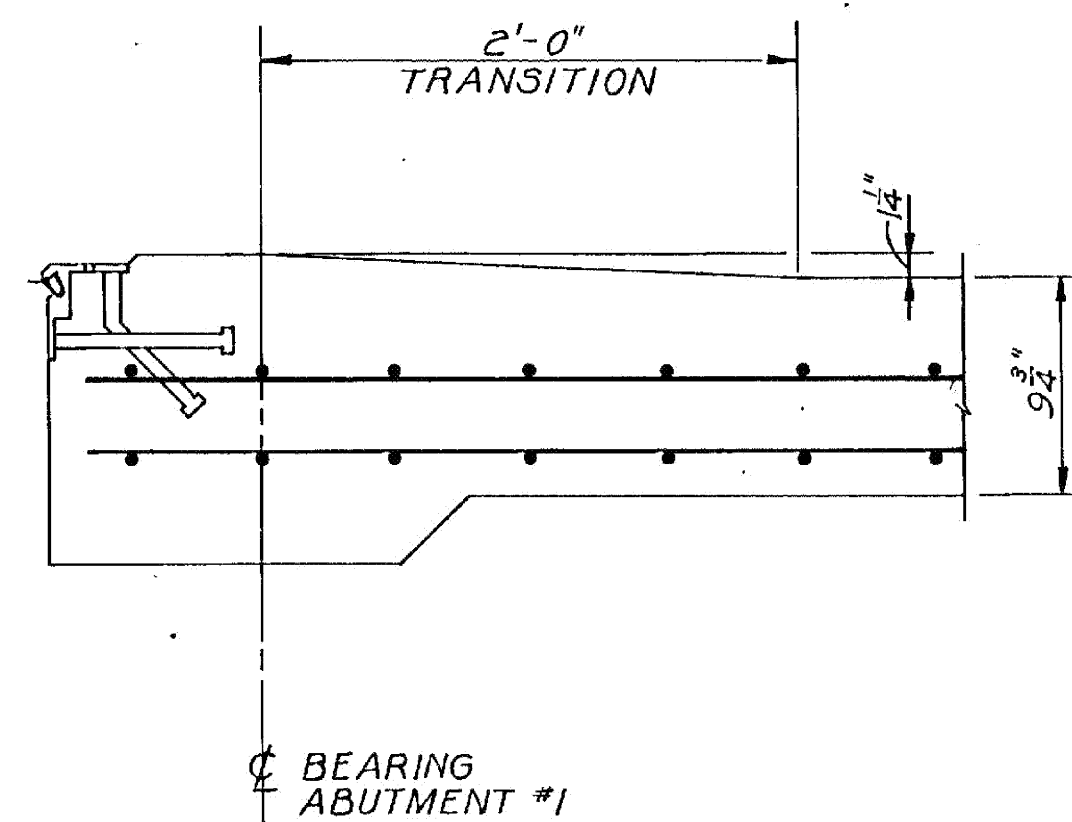
**PLAN**  
SCALE: 1" = 1'-0"

NOTE:  
ABUTMENT #1 JOINT SHOWN  
ABUTMENT #2 JOINT OPPOSITE  
HAND

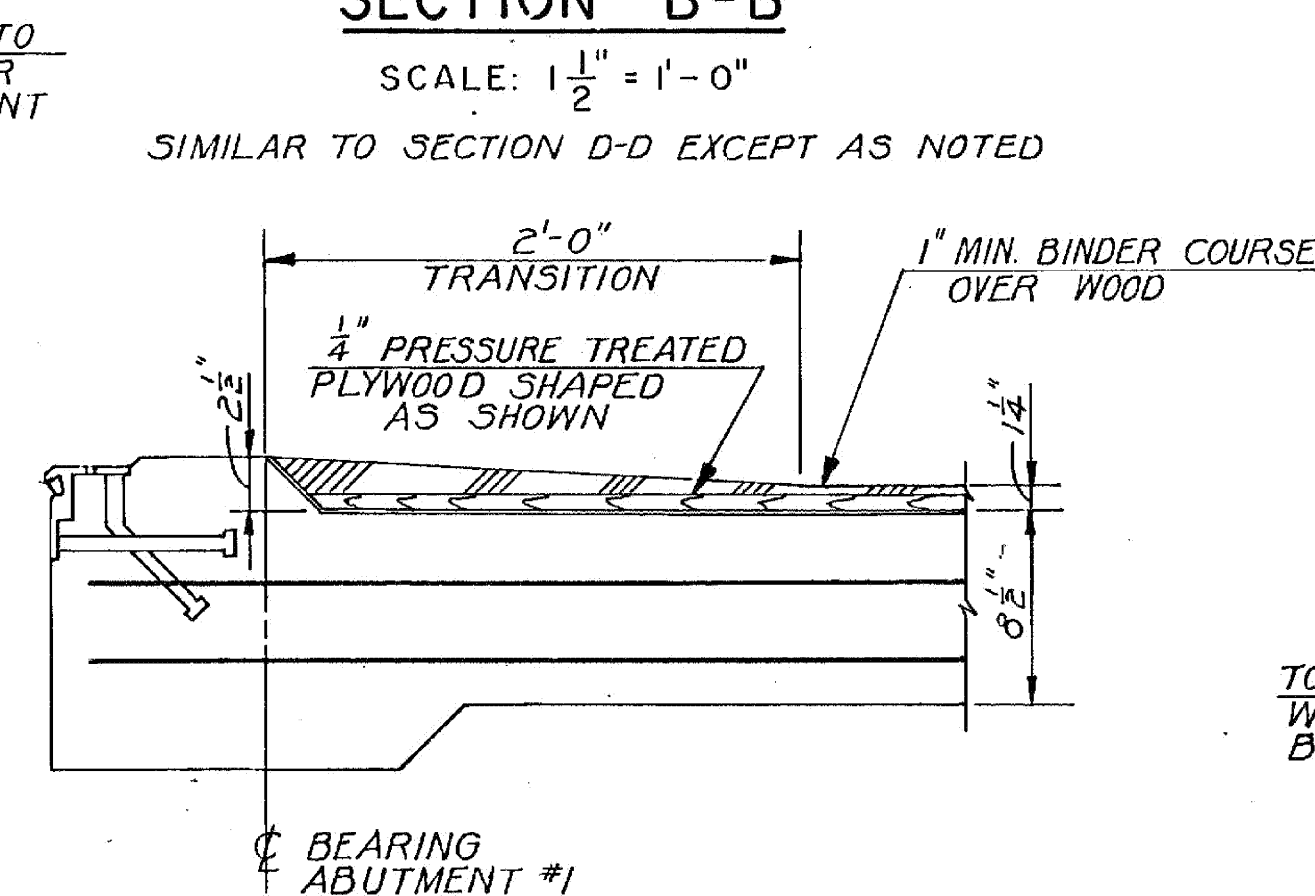


**SECTION A-A**  
SCALE: 1 1/2" = 1'-0"

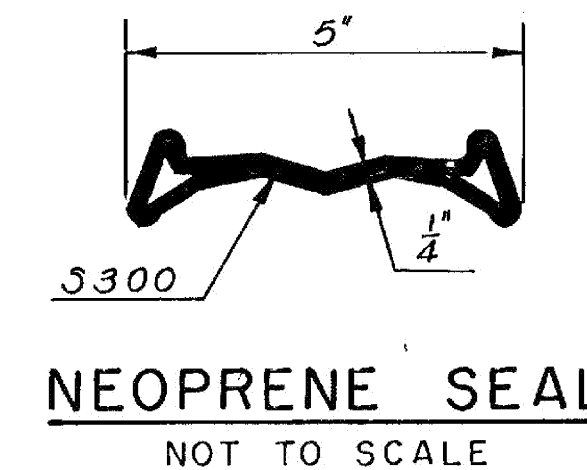
**SECTION D-D**  
SCALE: 1 1/2" = 1'-0"



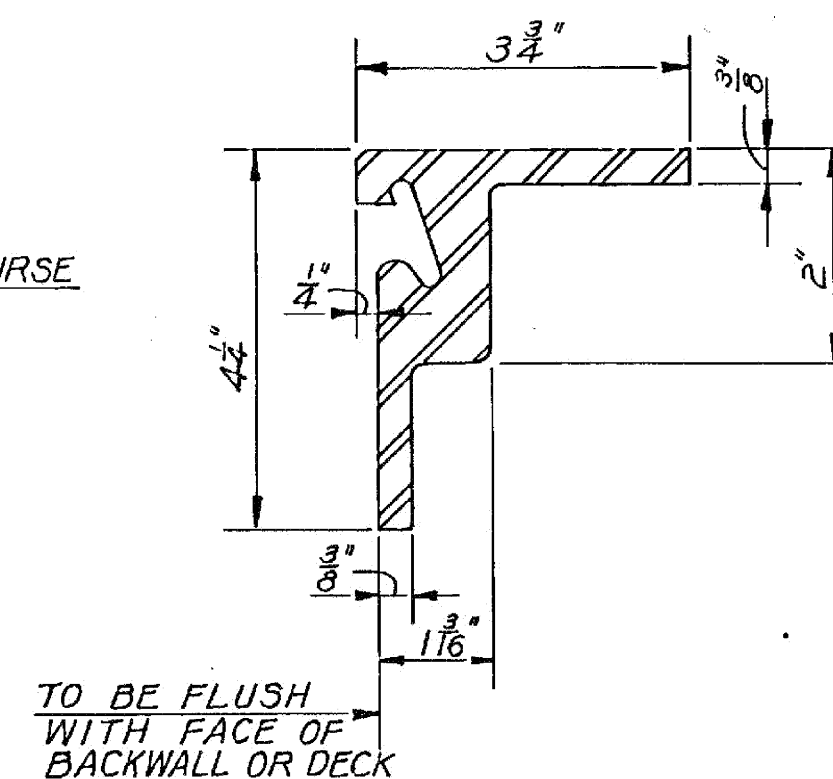
**SECTION B-B**  
SCALE: 1 1/2" = 1'-0"



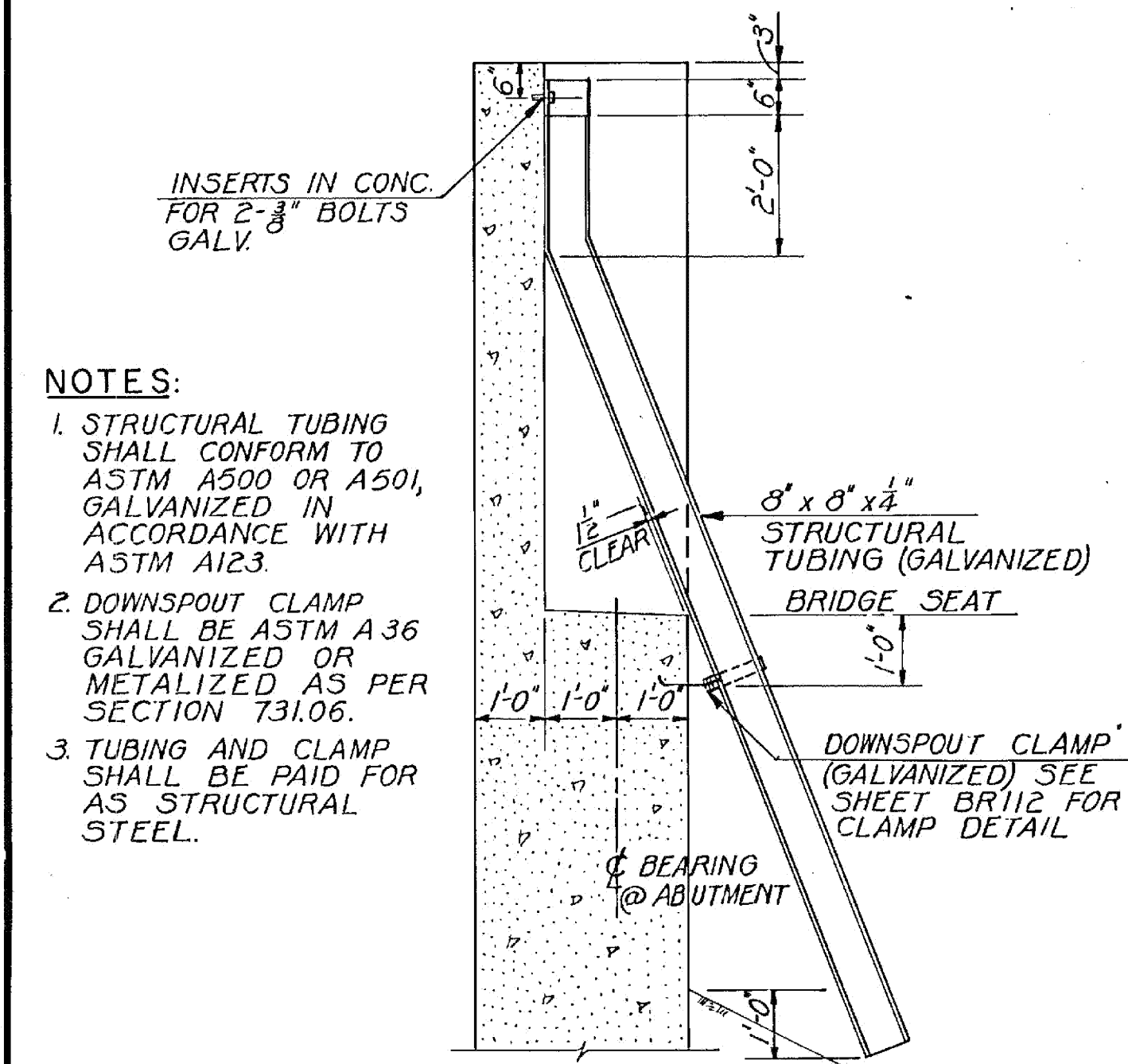
**SECTION C-C**  
SCALE: 1 1/2" = 1'-0"



**NEOPRENE SEAL**  
NOT TO SCALE

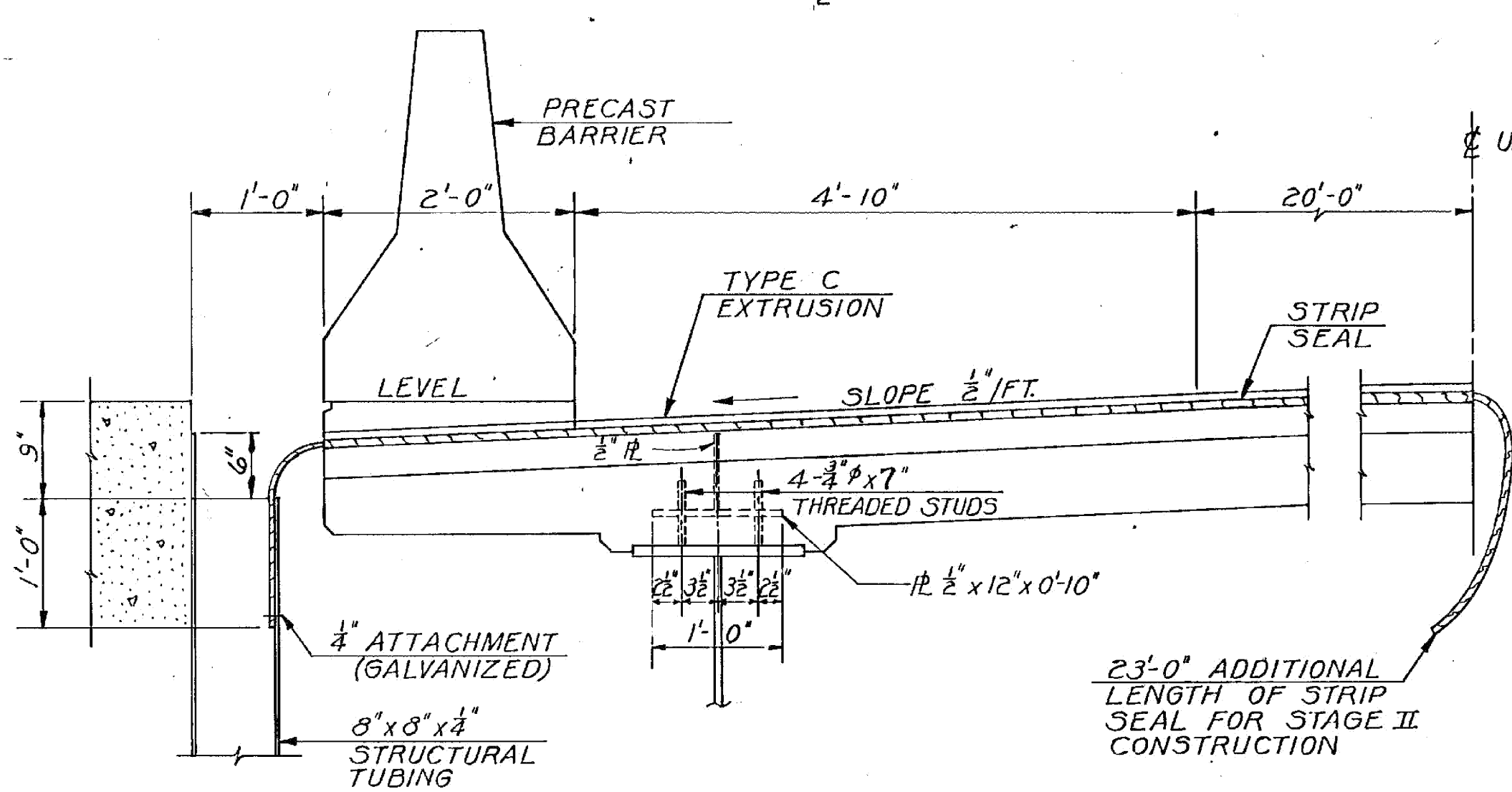


**STEEL EXTRUSION**  
(TYPE C)  
SCALE: 1/2" = 1'-0"



**SECTION F-F**  
SCALE: 1/2" = 1'-0"

- NOTES:**
- STRUCTURAL TUBING SHALL CONFORM TO ASTM A500 OR A501, GALVANIZED IN ACCORDANCE WITH ASTM A123.
  - DOWNSPOUT CLAMP SHALL BE ASTM A36 GALVANIZED OR METALIZED AS PER SECTION 731.06.
  - TUBING AND CLAMP SHALL BE PAID FOR AS STRUCTURAL STEEL.



**SECTION E-E**  
SCALE: 1" = 1'-0"

- NOTES**
- EXPANSION JOINT (SINGLE SEAL)**
- THE FINAL FINISH OF THE EXPANSION JOINT SHALL BE COVERED DURING THE PLACING OF THE BRIDGE DECK CONCRETE.
  - ALL STEEL COMPONENTS SHALL BE ASTM A36 GALVANIZED OR METALIZED AS PER SECTION 731.06 OF GENERAL SPECIAL PROVISIONS FOR BEARING MATERIALS UNLESS OTHERWISE NOTED.
  - ALL SIDEWALK PLATES SHALL BE ASTM A36 STEEL AND GALVANIZED. SIDEWALK PLATES AND WELDED STUDS SHALL BE INCLUDED IN THE COST PER LINEAR FOOT BID FOR ITEM 516.21 "ELASTOMERIC EXPANSION JOINT (SINGLE SEAL)". THE SIDEWALK PLATES SHALL BE GALVANIZED AND PAINTED GRAY IN COLOR (FED. COLOR NO. 24693) IN ACCORDANCE WITH THE SPECIAL PROVISION 708.09 "PAINTING HOT DIP GALVANIZED STEEL".
  - THE EXTRUSION TYPE C SHALL BE CONTINUOUS FOR EACH STAGE OF CONSTRUCTION AND WELDED TOGETHER BEFORE CONCRETE CLOSURE PIECE IS PLACED. THE NEOPRENE SEAL SHALL BE CONTINUOUS.
  - FOR 1/2" TO 3/4" PLATES USE 1/4" FILLET WELD. FOR 3/4" TO 1 1/2" PLATES USE 3/8" FILLET WELD. GROOVE WELDS SHALL BE FOR 1/2" DEPTH OF PLATE. ALL PLATES SHALL BE WELDED BOTH SIDES.
  - COAT CONCRETE CONTACT SURFACES WITH AN EPOXY BONDING COMPOUND MEETING THE REQUIREMENTS OF SECTION 719.03. PAYMENT TO BE INCLUDED UNDER THE UNIT PRICE BID FOR ITEM 516.21 "ELASTOMERIC EXPANSION JOINT (SINGLE SEAL)".
  - OPTIONAL DESIGN FOR ITEM 516.21 "ELASTOMERIC EXPANSION JOINT (SINGLE SEAL)" AS SHOWN ON SHEET BR112 MAY BE SUBMITTED.

STATEWIDE - SOUTHEAST REGION  
BHF MEMB(21)  
SHEET 32 OF 34  
BRIDGE 8  
FOR REFERENCE ONLY

<b>STATE OF VERMONT</b>	
<b>AGENCY OF TRANSPORTATION</b>	
TOWN OF <b>BRATTLEBORO</b>	Bridge No. <b>8</b>
HIGHWAY NO. <b>U.S. RTE. 5</b>	Log Sta.
<b>U.S. RTE. 5 OVER WEST RIVER</b>	Surv. Sta. <b>171+54</b>
<b>DECK EXPANSION JOINT-STAGE I</b>	
Designed by <b>J. V. WALSH</b>	Drawn by <b>C. R. GAY</b>
Checked by <b>J. V. WALSH</b> date <b>7-84</b>	Bridge Design Supervisor <b>Charles W. Terenzio</b> date <b>1/85</b>
PROJECT <b>BRATTLEBORO</b>	PROJECT NO. <b>BRM2000(9)</b>
Bridge Sheet No. <b>BR110</b>	Sheet <b>43</b> of <b>124</b>

BARNES & JARNIS, INC.  
CONSULTING ENGINEERS  
BOSTON, MASS. 02116