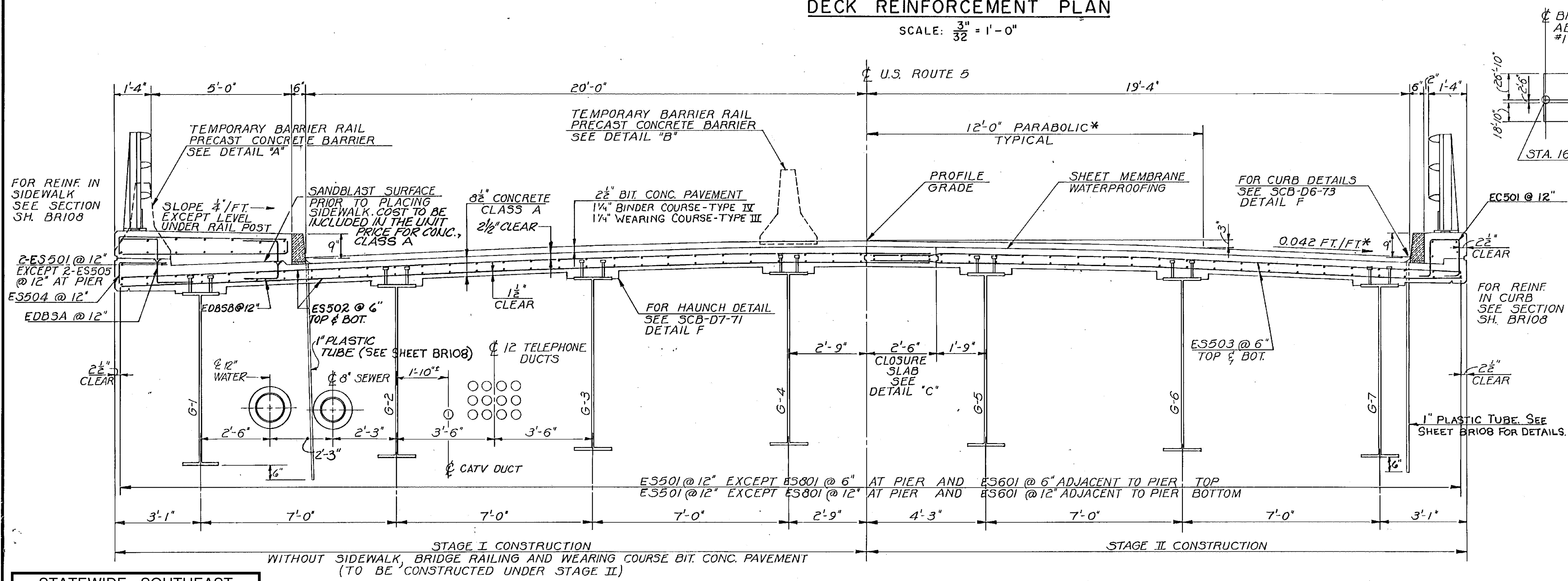
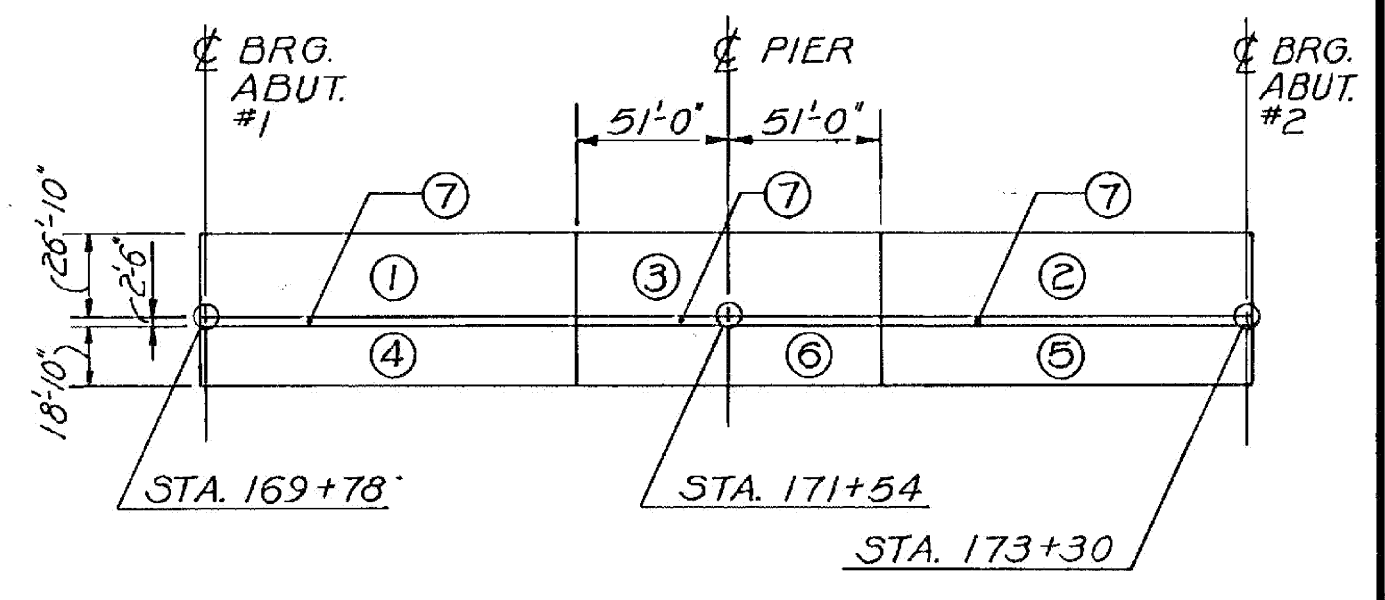


**DECK REINFORCEMENT PLAN**  
SCALE:  $\frac{3}{32}'' = 1'-0''$



**TYPICAL BRIDGE SECTION**  
SCALE:  $\frac{1}{2}'' = 1'-0''$



**POUR SEQUENCE**  
SCALE: 1" = 60'

- NOTES:**
1. THE BRIDGE RAILING SHALL BE 3 RAIL ALUMINUM. RAILING ON THE SIDEWALK SIDE (WEST FASCIA) SHALL HAVE SPINDLES, SEE STANDARD DWG. 38-R1-71.
  2. SEE STANDARD DWG. SCB-D7-71, DETAIL F FOR GIRDER HAUNCH AND SHEAR CONNECTOR DETAILS.
  3. FOR DETAILS "A", "B", AND "C" SEE BR108.
  4. FOR UTILITY SUPPORT DETAILS SEE BR116.
  5. DECK POURS ① AND ②, AND ④ AND ⑤ MAY BE COMBINED IF THE CONTRACTOR CAN DEMONSTRATE HIS ABILITY TO DO SO IN AN 8HR. PERIOD.

<b>STATE OF VERMONT</b>	
<b>AGENCY OF TRANSPORTATION</b>	
TOWN OF <b>BRATTLEBORO</b>	Bridge No. <b>8</b>
HIGHWAY NO. <b>U.S. RTE. 5</b>	Log Sta. <b>171+54</b>
<b>U.S. RTE. 5 OVER WEST RIVER</b>	
<b>TYPICAL SECTION</b>	
Designed by <b>J. J. WALSH</b>	Drawn by <b>C. R. GAY</b>
Checked by <b>J. J. WALSH</b> date <b>7-84</b>	Bridge Design Supervisor <b>Charles M. Terenzio</b> date <b>1/85</b>
PROJECT <b>BRATTLEBORO</b>	PROJECT NO. <b>BRM2000(9)</b>
Bridge Sheet No. <b>BR107</b>	Sheet <b>40</b> of <b>124</b>

STATEWIDE - SOUTHEAST REGION  
BHF MEMB(21)  
SHEET 30 OF 34  
BRIDGE 8  
FOR REFERENCE ONLY

\* EXCEPT FROM STA. 169+76.00 TO STA. 170+50±  
SEE BANKING DIAGRAM SHEET 21 OF HWY. PLANS

NOTE: ALL SUPERSTRUCTURE REINFORCING STEEL SHALL BE EPOXY COATED (DESIGNATED BY PREFIXES "E" & "E.C").

BARNES & JARNIS, INC.  
CONSULTING ENGINEERS  
BOSTON, MASS. 02116

BR107 44-131 5000