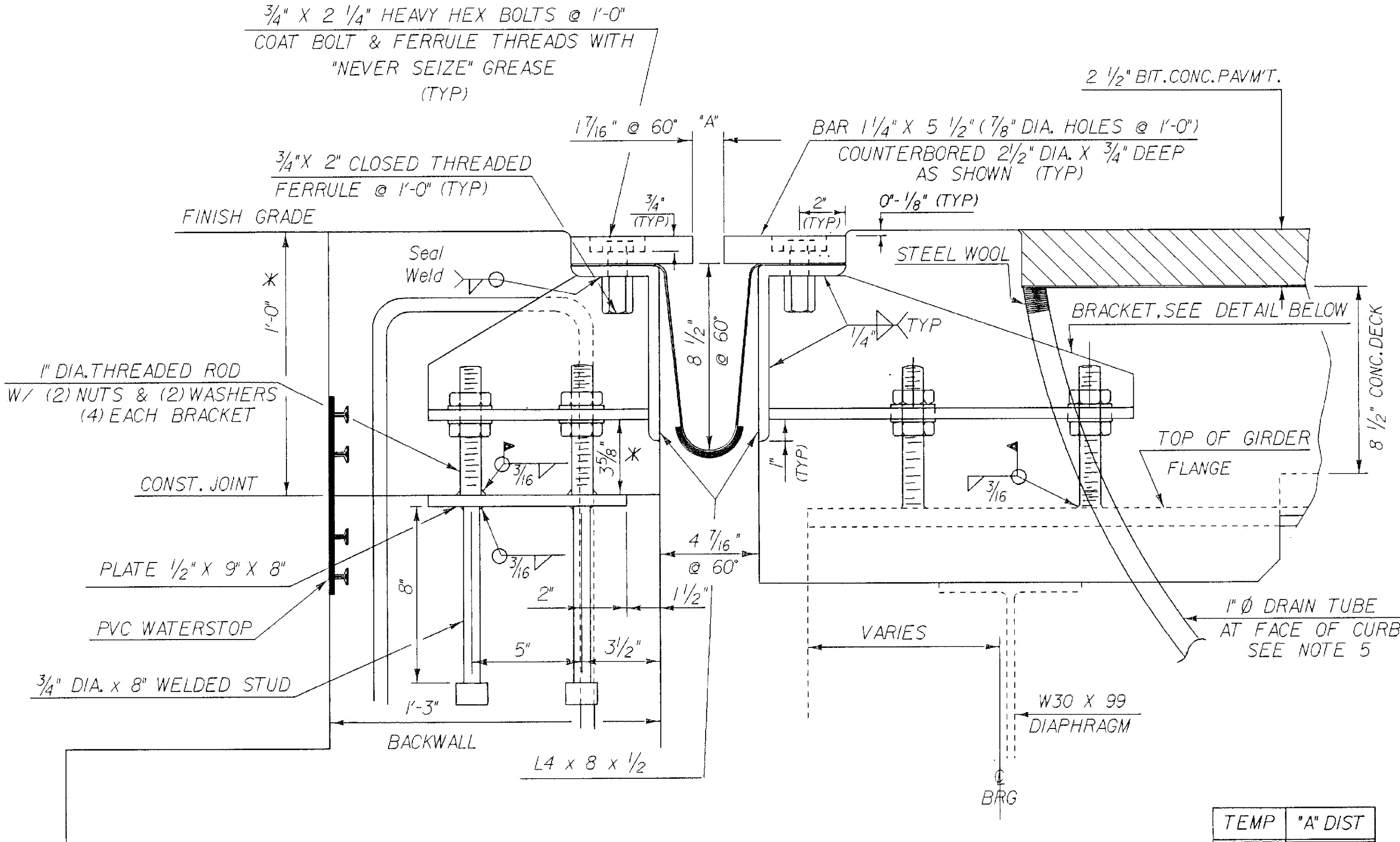


TYPICAL SECTION BETWEEN GIRDERS (NORMAL)

SCALE: 3" = 1'-0"



TYPICAL SECTION AT GIRDERS (NORMAL)

SCALE: 3" = 1'-0"

| TEMP | "A" DIST |
|-------|----------|
| 0°F | 1 3/4" |
| 15°F | 1 11/16" |
| 30°F | 1 9/16" |
| 45°F | 1 7/16" |
| 60°F | 1 5/16" |
| 75°F | 1 3/16" |
| 90°F | 1 1/4" |
| 105°F | 1 1/16" |

* THESE DIMENSIONS ARE THEORETICAL AND MAY CHANGE DEPENDING UPON THE OUTCOME OF THE BEAM PROFILES

P.V.C. WATERSTOP FOR CONSTRUCTION JOINTS

THE COSTS FOR P.V.C. WATERSTOP SHALL BE INCLUDED IN THE UNIT PRICE BID FOR CONCRETE. OTHER CONFIGURATIONS MAY BE USED UPON APPROVAL OF THE STRUCTURES ENGINEER.

NOTES

1. THE FINAL FINISH OF THE EXPANSION DEVICE SHALL BE COVERED DURING THE PLACING OF BRIDGE DECK CONCRETE.
2. ALL STEEL COMPONENTS SHALL BE AASHTO M270 GRADE 36 GALVANIZED OR METALIZED AS PER SUBSECTION 506J5 (b) OR (c).
3. THE 1 1/4" X 5 1/2" BARS SHALL BE FURNISHED IN 2 PIECES.
4. DETAILS ON THIS SHEET ARE FOR ITEM 516J0 "BRIDGE EXPANSION JOINTS".
5. A 1" DIAMETER PLASTIC DRAIN TUBE SHALL BE INSTALLED AS SHOWN AT THE FACE OF CURB. THE UPPER END IS TO BE PLUGGED WITH STEEL WOOL AND THE LOWER END IS TO EXTEND 6" BELOW THE BOTTOM OF THE ADJACENT GIRDER. THE DRAIN TUBES SHALL BE FASTENED TO THE GIRDERS USING A METHOD APPROVED BY THE ENGINEER.
6. PAYMENT FOR PVC WATERSTOP SHALL BE SUBSIDIARY TO CONCRETE, CLASS B.
7. A DRIP BEAD OF PREFORMED FABRIC MATERIAL SHALL BE CEMENTED TO THE BOTTOM OF THE FABRIC USING AN ADHESIVE APPROVED BY THE MANUFACTURER. THE DRIP BEAD SHALL COMPLETELY SURROUND THE OUTLET HOLE IN THE FABRIC.

BRACKET PLAN IN BACKWALL

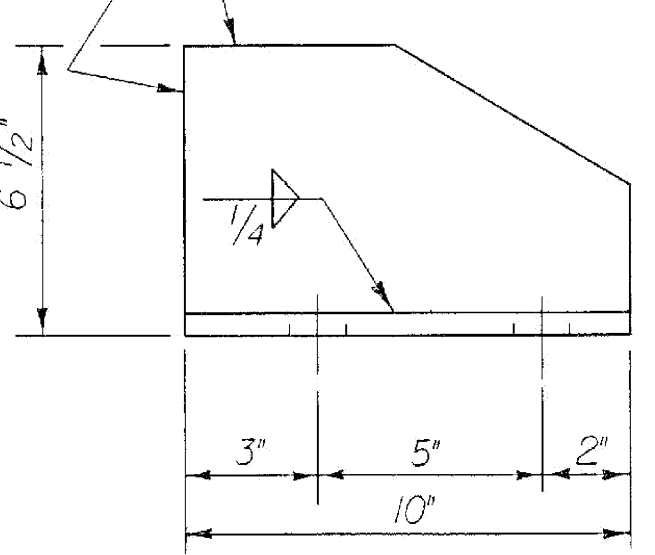
SCALE: 3" = 1'-0"

BRACKET PLAN ON GIRDER

SCALE: 3" = 1'-0"

CUT & SHAPE TO FIT AGAINST 8" X 4" ANGLE

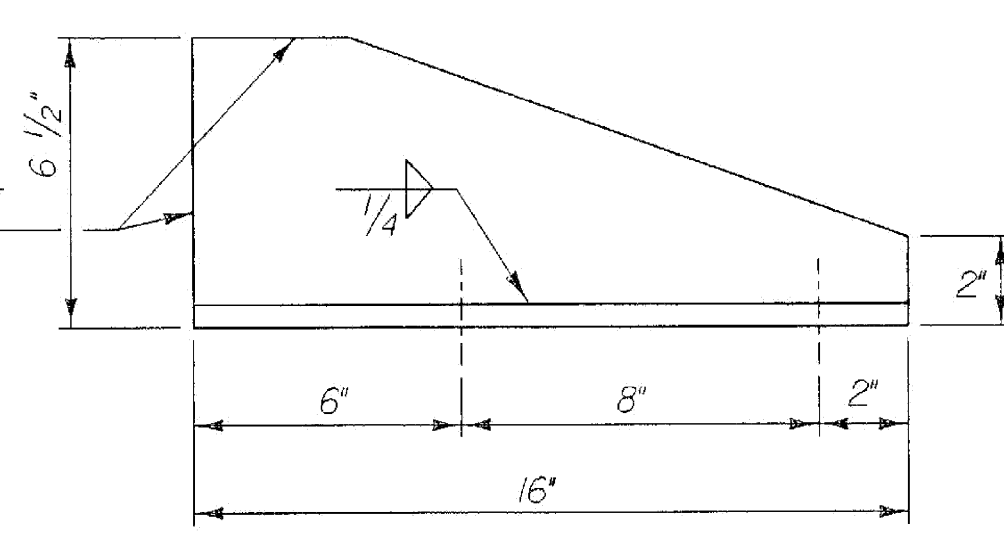
ALL PLATES 1/2"



BRACKET ELEVATION IN BACKWALL

SCALE: 3" = 1'-0"

CUT & SHAPE TO FIT AGAINST 8" X 4" ANGLE



BRACKET ELEVATION ON GIRDER

SCALE: 3" = 1'-0"

STATEWIDE - SOUTHEAST REGION
BHF MEMB(21)
SHEET 18 OF 34
BRIDGE 46
FOR REFERENCE ONLY

ARCHIVED ON CADD

STATE OF VERMONT AGENCY OF TRANSPORTATION

| | | | |
|--|-------------------------|--------------------------|----------|
| Town Of | CHESTER | Bridge No. | 46 |
| Highway No. | VT. II | Log Sta. | 110+16 |
| | | Surv. Sta. | 15+00 |
| VT. ROUTE II OVER THE MIDDLE BRANCH WILLIAMS RIVER | | | |
| EXPANSION JOINT DETAILS | | | |
| Designed By | D. J. HOYNE | Drawn By | G. ROY |
| Checked By | C.P. WILLIAMS | Date | 11-91 |
| PROJECT | CHESTER | BRIDGE DESIGN SUPERVISOR | |
| | | Date | |
| PROJECT NO. | | PROJECT NO. | |
| CHESTER | | BRF-F 016-1(3) | |
| I.G.C. Info. | ZH143072J77B015BRG.DGN/ | 77B015JNT.PRF | |
| Bridge Sheet No. | BR 118 | Sheet | 41 of 68 |