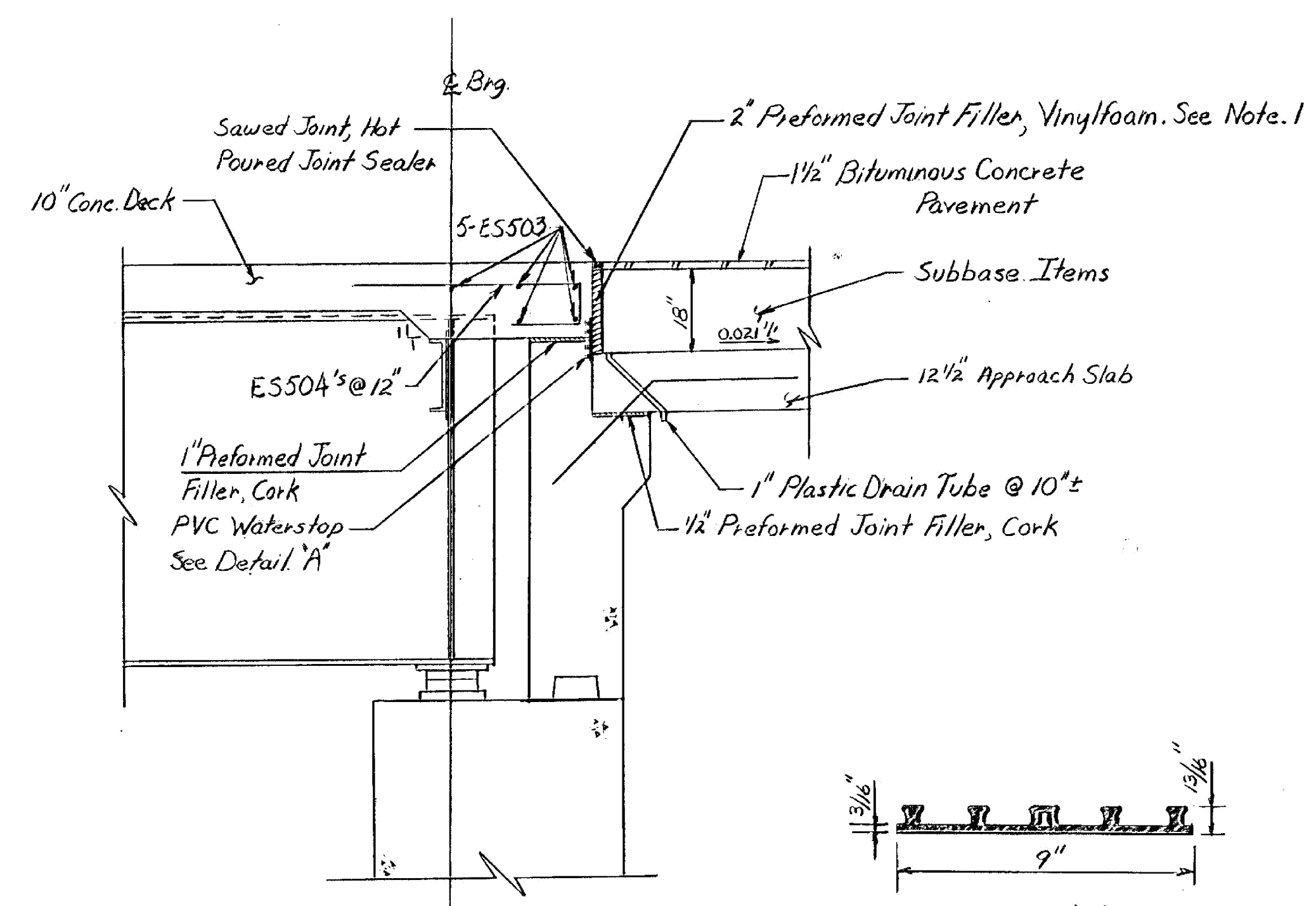
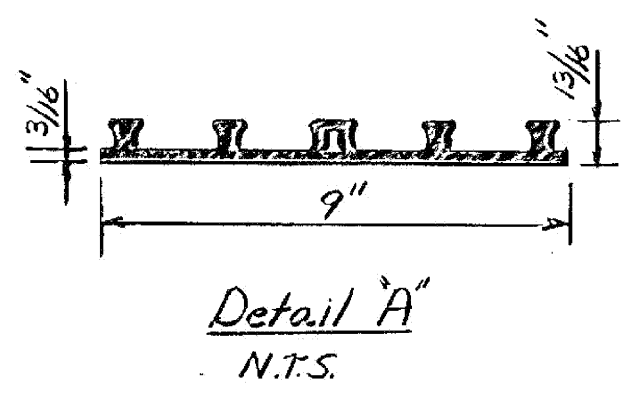


**SLAB REINFORCING**  
Scale: 1/8" = 1'-0"

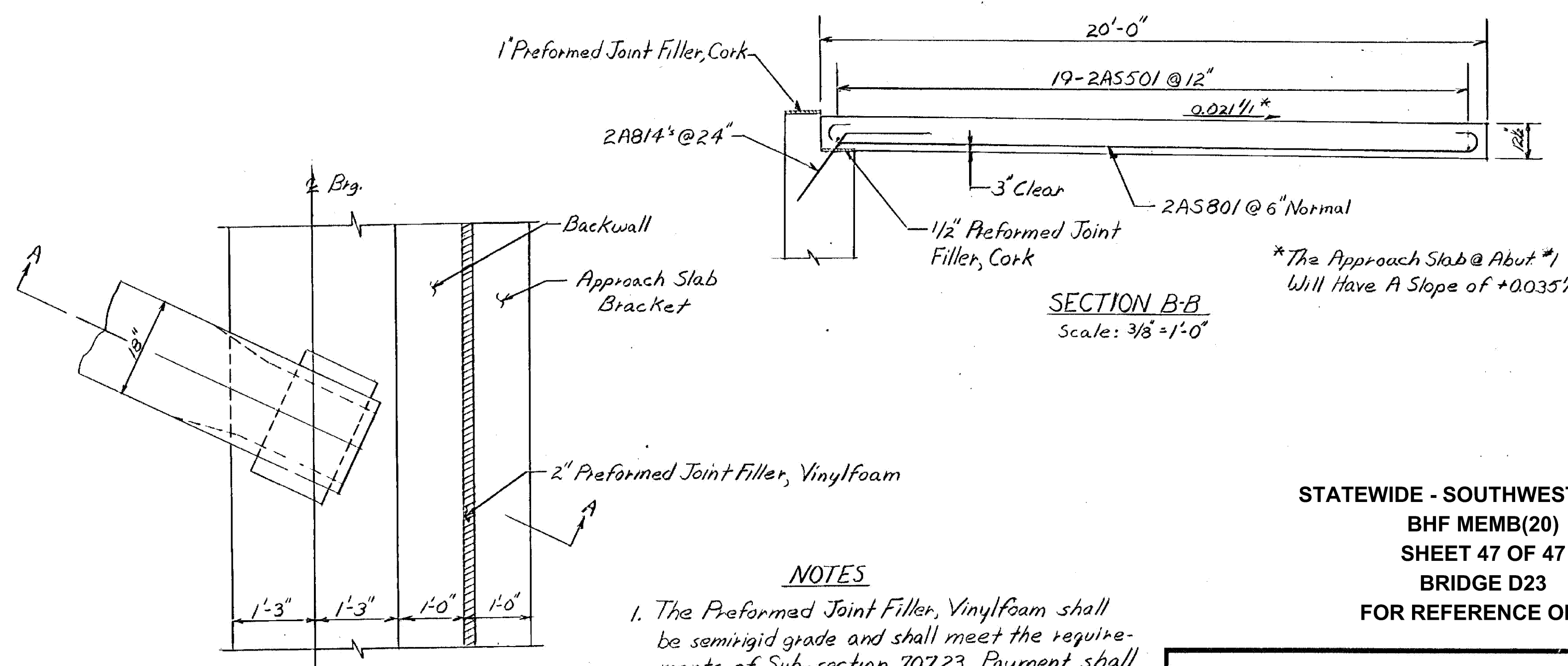
Note: Placement of Deck Concrete Must Proceed From Abut. 1 Toward Abut. 2. Placement Shall Be Continuous.



**SECTION A-A**  
Scale: 1/2" = 1'-0"



**Detail A**  
N.T.S.



**SECTION B-B**  
Scale: 3/8" = 1'-0"

\*The Approach Slab @ Abut. #1 Will Have A Slope of +0.035%

**NOTES**

1. The Preformed Joint Filler, Vinylfoam shall be semirigid grade and shall meet the requirements of Sub-section 707.23. Payment shall be included in the unit bid price for Concrete Class A.
2. The PVC Waterstop shall be as specified in Sub-section 707.30. Payment shall be included in the unit bid price for Concrete Class A.

STATEWIDE - SOUTHWEST REGION  
BHF MEMB(20)  
SHEET 47 OF 47  
BRIDGE D23  
FOR REFERENCE ONLY

<b>STATE OF VERMONT</b>	
<b>AGENCY OF TRANSPORTATION</b>	
TOWN OF <b>SUNDERLAND</b>	Bridge No. <b>28</b>
HIGHWAY NO. <b>Town Highway #4</b>	Log Sta.
<b>TH 4 over ARTERIAL U.S. RTE. #7</b>	Surv. Sta. <b>1255+50.00</b>
<b>DECK &amp; APPROACH SLAB REINFORCING</b>	
Designed by <b>A. Elwood</b>	Drawn by <b>R. Panaklo</b>
Checked by <b>A.W.E.</b> date <b>10-80</b>	Bridge Design Supervisor <b>R.S. Haupt</b> date <b>10-80</b>
PROJECT <b>SUNDERLAND-MANCHESTER</b>	PROJECT NO. <b>FO19-1(9) C-1</b>
Bridge Sheet No. <b>BR106</b>	Sheet <b>1001</b> of <b>429</b>