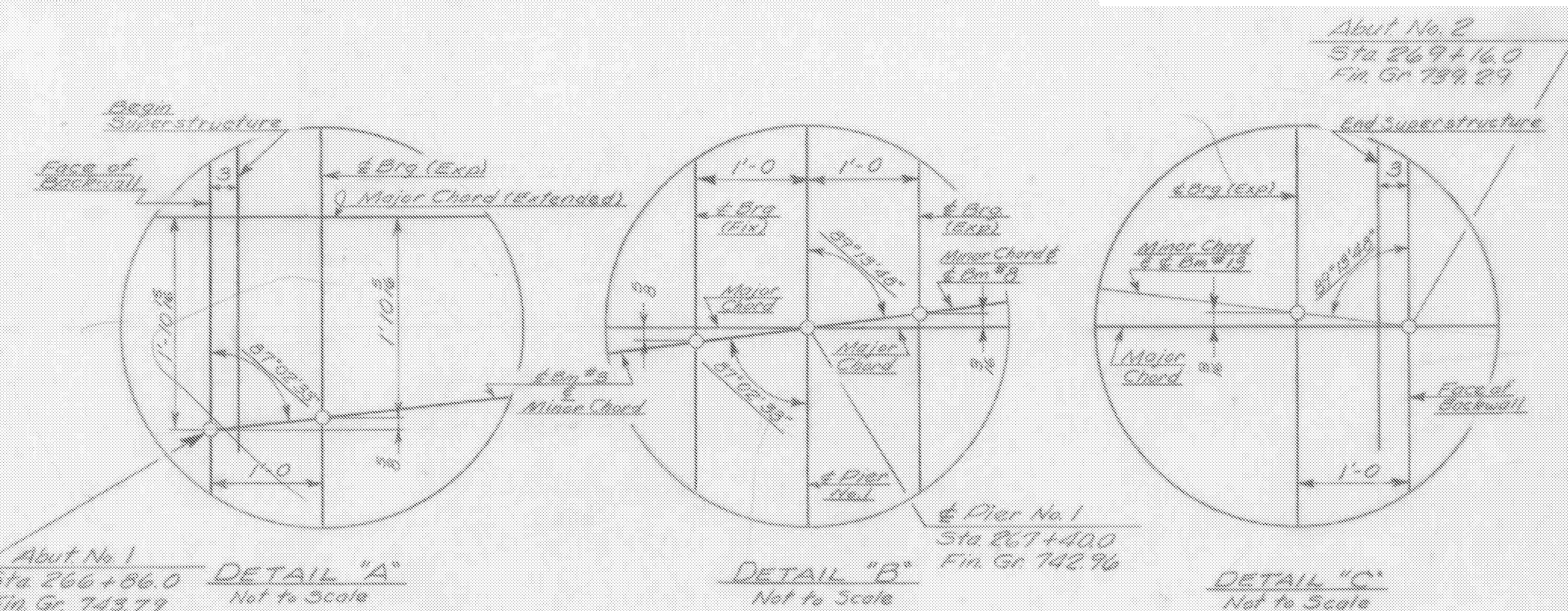
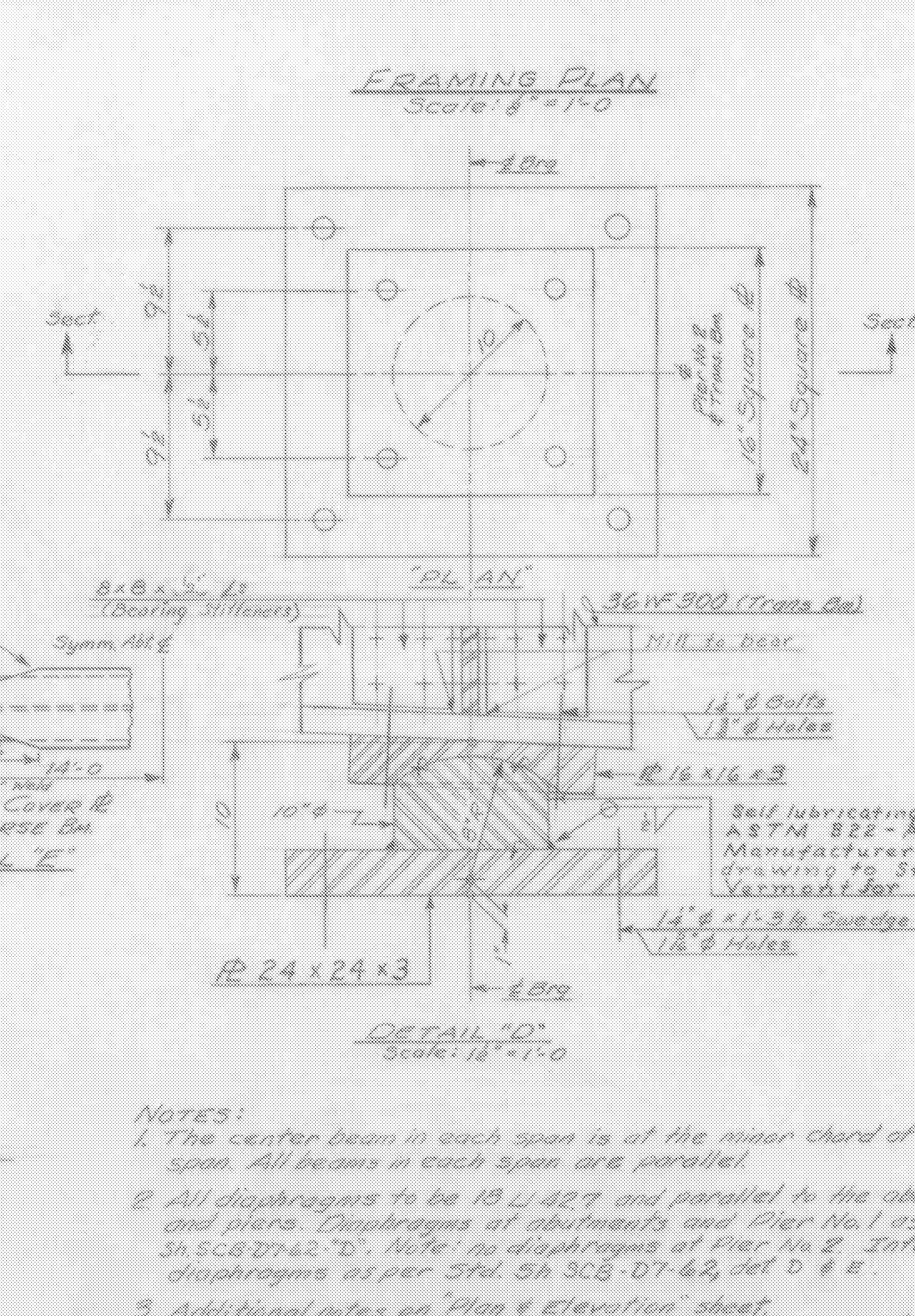
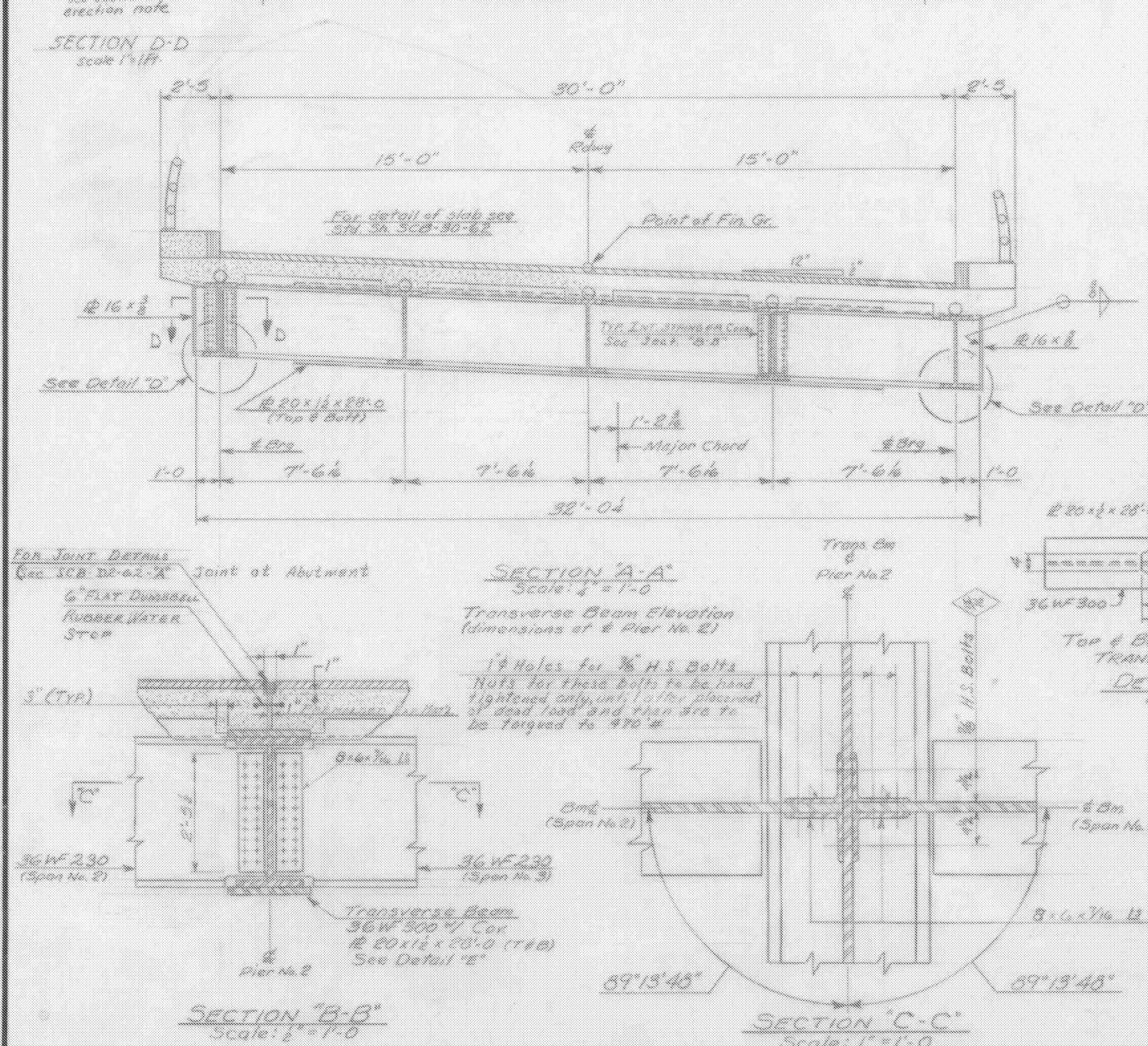


STATEWIDE - SOUTHWEST REGION  
BHF MEMB(20)  
SHEET 37 OF 47  
BRIDGE 54  
FOR REFERENCE ONLY



**SUPERSTRUCTURE QUANTITIES**

| ITEM NO.            | ITEM                            | UNIT | NET            | FINAL |
|---------------------|---------------------------------|------|----------------|-------|
| 518                 | Tar Emulsion for Bridge Floors  | GAL  | 310            |       |
| 361-B               | Aluminous Concrete Pav., Mod    | Ton  | 65             | *     |
| 401-A               | Concrete Class AA, Mod.         | CY   | 250            |       |
| 402                 | Reinforcing Steel               | LB   | (See Schedule) |       |
| 403                 | Spiral Reinforcement (6320 lbs) | L.F. | 1              |       |
| 404-A               | Structural Steel                | LB   | 322,207        |       |
| 442                 | Removal of Present Superstr.    | L.F. | 1              |       |
| 556-C               | Groote Bridge Curb Mod          | L.F. | 457            |       |
| 572                 | Bridge Railings                 | L.F. | 495            |       |
| 372-A               | Joint Sealer Hot Poured         | L.F. | 152            | *     |
| 373                 | Rubber Joint Material           | L.F. | 124            |       |
| * Roadway Items     |                                 |      |                |       |
| * Concrete Class AA |                                 |      |                |       |

**NOTES:**

- The center beam in each span is at the minor chord of that span. All beams in each span are parallel.
- All diaphragms to be 18 L 42.9 and parallel to the abutments and piers. Diaphragms at abutments and Pier No. 1 as per Std. Sh. SCB-DT-2-D. Note: no diaphragms at Pier No. 2. Interior diaphragms as per Std. Sh. SCB-DT-2-D, det. D # 2.
- Additional notes on Plan & elevation sheet.
- Parapet for rubber water stops to be included in unit price bid for Concrete Class AA

CONTRACT #2  
BR 203 of 23A

**STATE OF VERMONT**  
DEPARTMENT OF HIGHWAYS

TOWN OF DORSET

ROUTE No. US 7 LOG STA. 264+70

EMERALD LAKE OVERPASS (Sta. 2683)

SCALE As Shown

SURVEYED BY JENETT

DRAWN BY AHS CHECKED BY RWK

PROJECT No. F019-2(12)

SHEET 35 OF 109