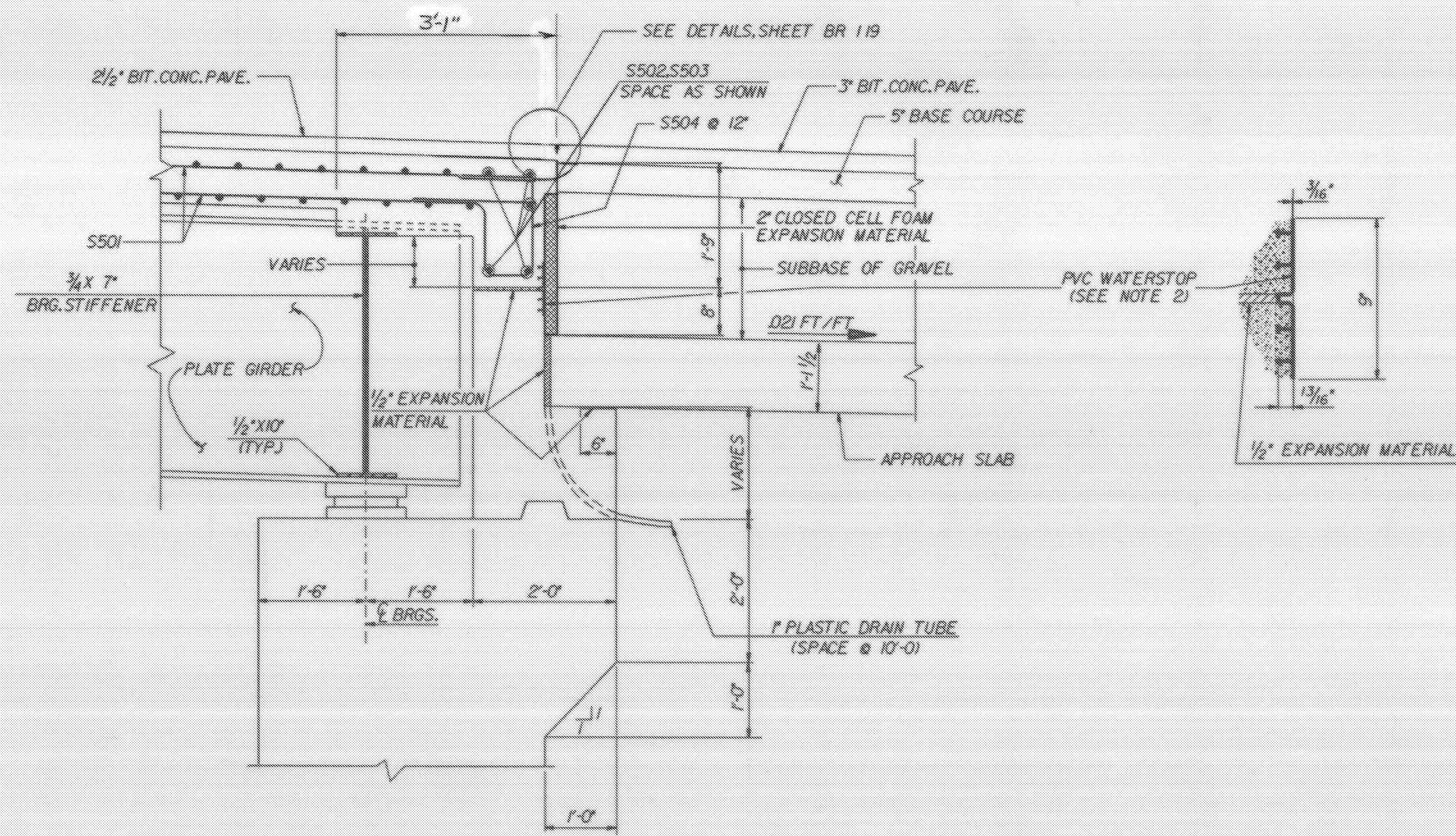


TYPICAL SECTION
SCALE: 1/2" = 1'-0"

- NOTES**
1. PAYMENT FOR ALL MATERIALS AND LABOR FOR PLACEMENT OF HOT POURED JOINT SEALER, AS DETAILED ON THIS SHEET, SHALL BE SUBSIDIARY TO ITEM 406.25, 'BITUMINOUS CONCRETE PAVEMENT'.
 2. COST FOR INSTALLING PVC WATERSTOP, AS SHOWN ON THIS SHEET, SHALL BE INCLUDED IN THE UNIT PRICE BID FOR CONCRETE, CLASS A, OTHER SIMILAR PVC WATERSTOP CONFIGURATIONS MAY BE SUBMITTED TO THE STRUCTURES ENGINEER FOR APPROVAL.
 3. SEE SECTION 707.09 OF THE STANDARD SPECIFICATIONS FOR DETAILS OF CLOSED CELL FOAM EXPANSION MATERIAL.
 4. FOR DECK REINFORCING PLAN, SEE SHEET BR 106.
 5. FOR CURB AND RAILING DETAILS, SEE SHEET BR 107.
 6. FOR REINFORCING STEEL SCHEDULE, SEE SHEET BR 120.
 7. All reinforcing bars in the deck and curb shall be Epoxy Coated.



TYPICAL SECTION AT END OF BRIDGE
SCALE: 3/4" = 1'-0"

STATEWIDE - SOUTHWEST REGION
BHF MEMB(20)
SHEET 28 OF 47
BRIDGE 29
FOR REFERENCE ONLY

GANNETT FLEMING TRANSPORTATION ENGINEERS, INC.			
STATE OF VERMONT AGENCY OF TRANSPORTATION			
TOWN OF	JAMAICA	Bridge No.	29
		Log Sta.	102 - 79
HIGHWAY NO.	VT 30	Serv. Sta.	101 - 22
VT 30 OVER WEST RIVER			
TYPICAL SECTION			
Designed by	P.G. NORTON	Drawn by	G.P. MILAKOVIC
Checked by	M.J. WALSH	Bridge Design Supervisor	P.G. NORTON
	DATE: 2-86		DATE: 3-86
PROJECT	JAMAICA	PROJECT NO.	BRF 015-1(7)
Bridge Sheet No.	BR 105	Sheet	30 of 120