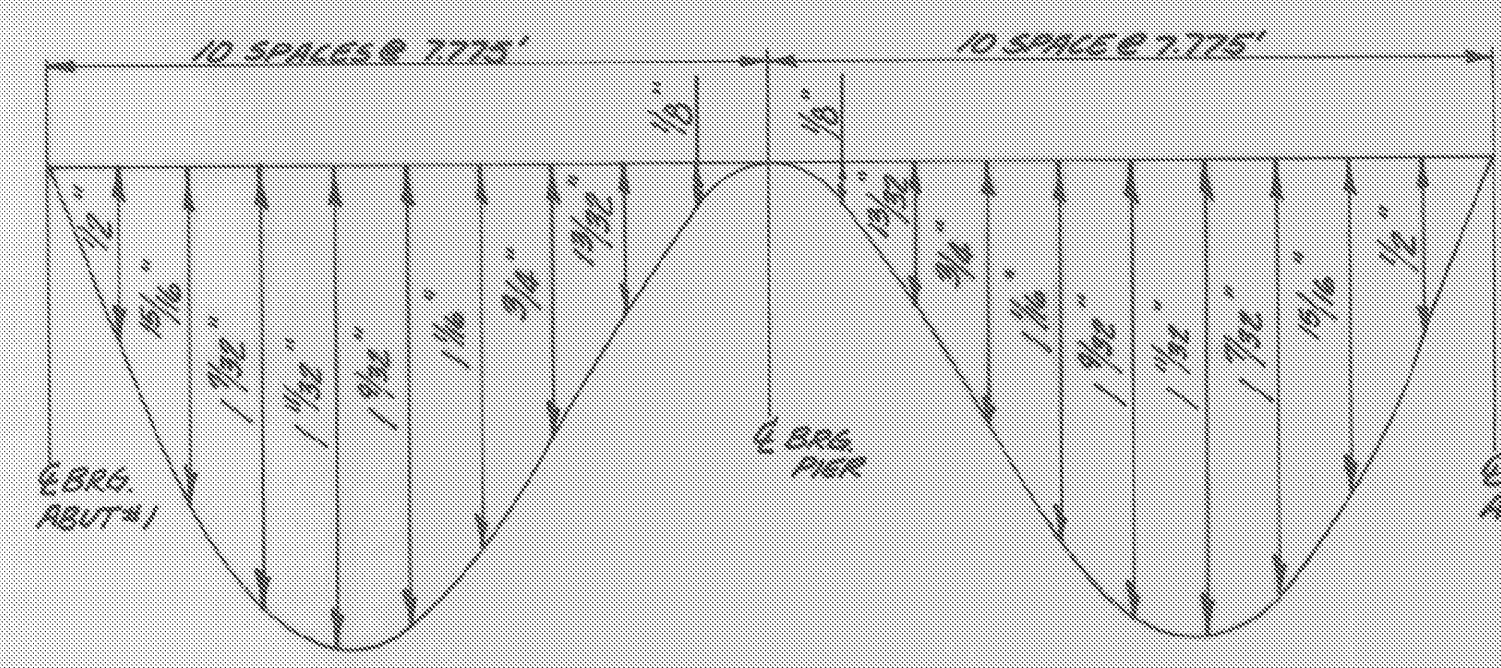


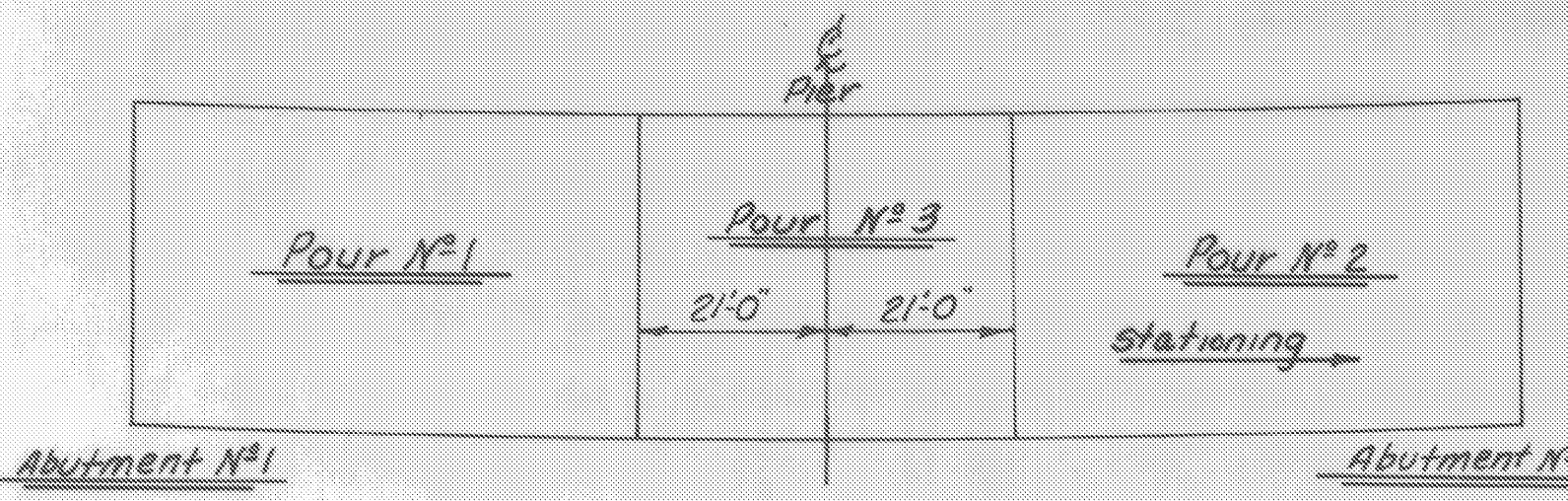
CAMBER DIAGRAM
SCALE: 1" = 1" VERTICAL
1" = 20' HORIZONTAL

NOTE: CAMBER TOLERANCE AT ANY POINT SHALL BE PER AISC HANDBOOK FOR ROLLED BEAMS.

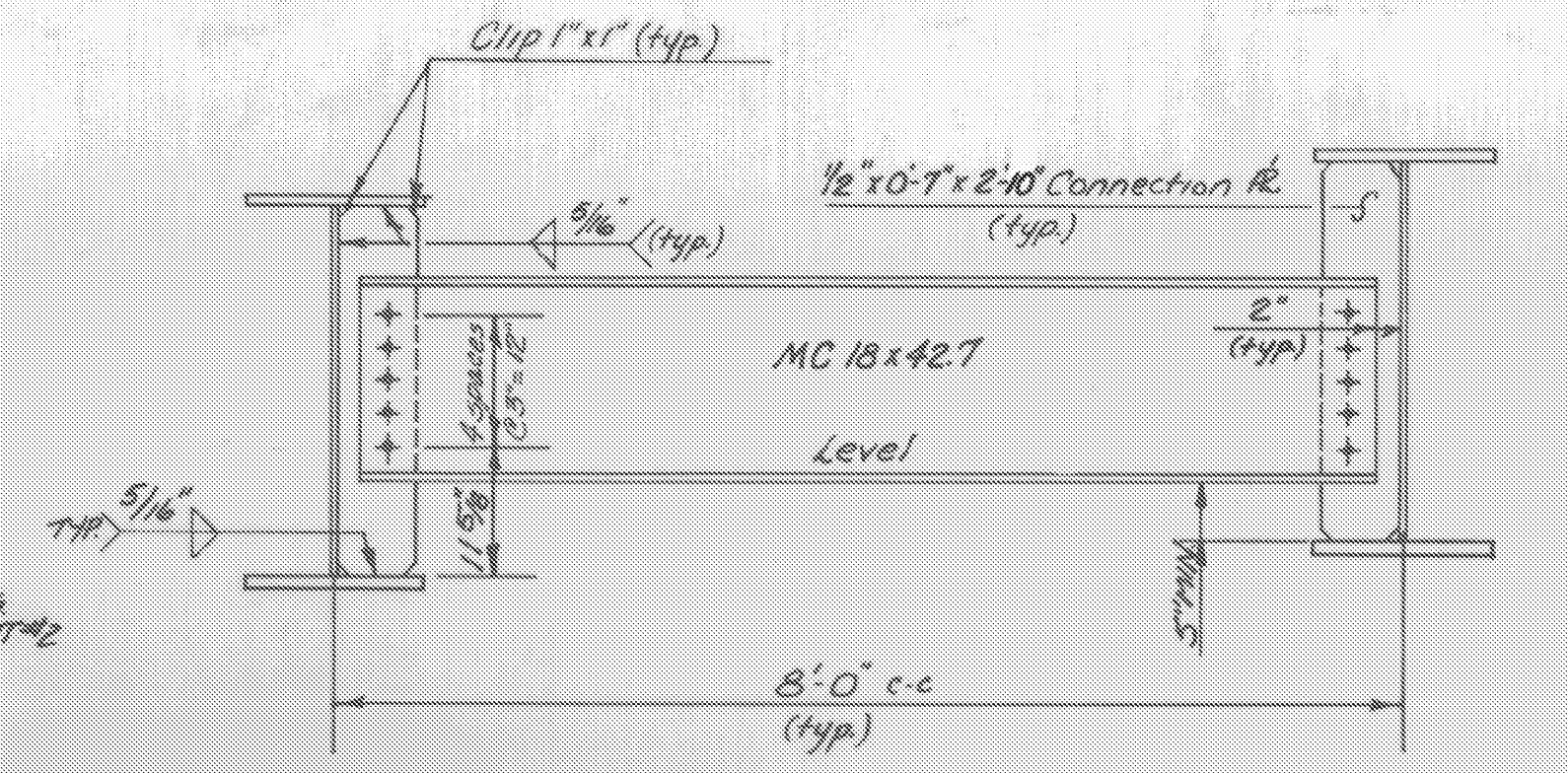


DEAD LOAD DEFLECTION DIAGRAM
SCALE: 1" = 1/2" VERTICAL
1" = 20' HORIZONTAL

NOTE: 1. THE SEQUENCE OF POURS 1 & 2 MAY BE INTERCHANGED. A MINIMUM OF 96 HOURS BETWEEN POURS IS REQUIRED. SEE NOTE 15, SCB-D1-75.
2. IF APPROVED BY THE ENGINEER ALL SECTIONS MAY BE POURED THE SAME DAY PROVIDED THE INDICATED POURING SEQUENCE IS FOLLOWED AND THAT A RETARDING ADMIXTURE IS USED SO THAT THE REINFORCING STEEL WILL NOT SET UP UNTIL ALL THE DECK CONCRETE HAS BEEN PLACED AND THE TOTAL TIME OF POUR WILL NOT BE GREATER THAN 6 HOURS. THE RETARDING ADMIXTURE SHALL BE SUBSIDIARY TO THE ITEM CONCRETE CLASS A.
3. IF ALL SECTIONS ARE NOT POURED IN THE SAME DAY, USE BRIDGE SLAB CONSTRUCTION JOINTS BETWEEN POURS SEE STD DWG SCB-D6-75, DETAIL D. JOINTS SHALL BE PARALLEL TO THE E BRG.

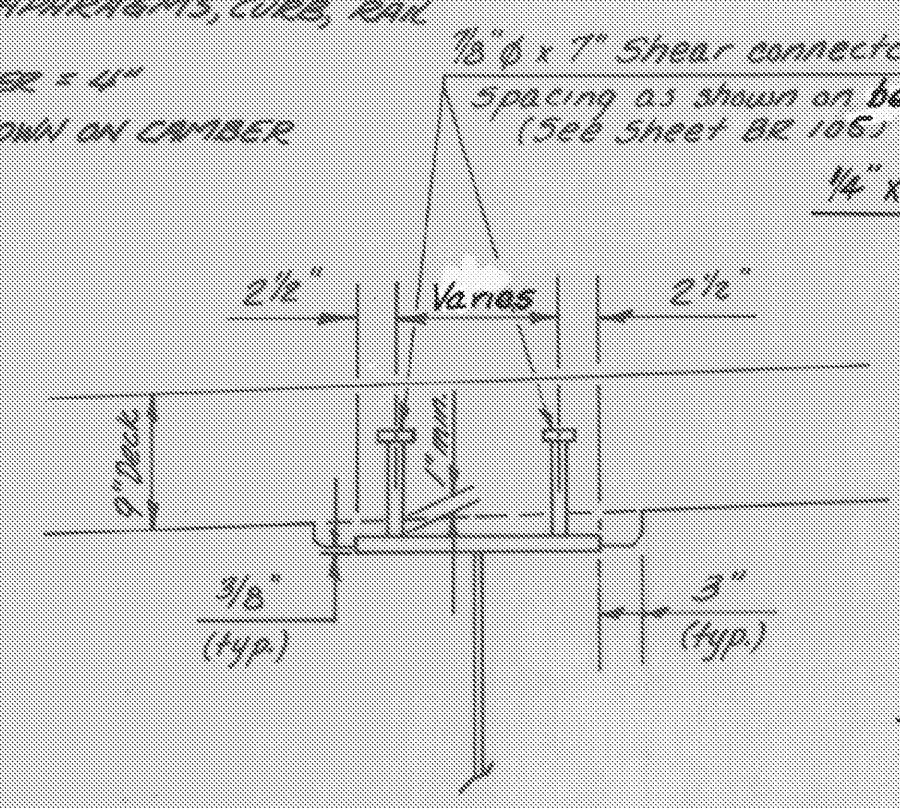


POUR SEQUENCE DIAGRAM
1" = 20'-0"



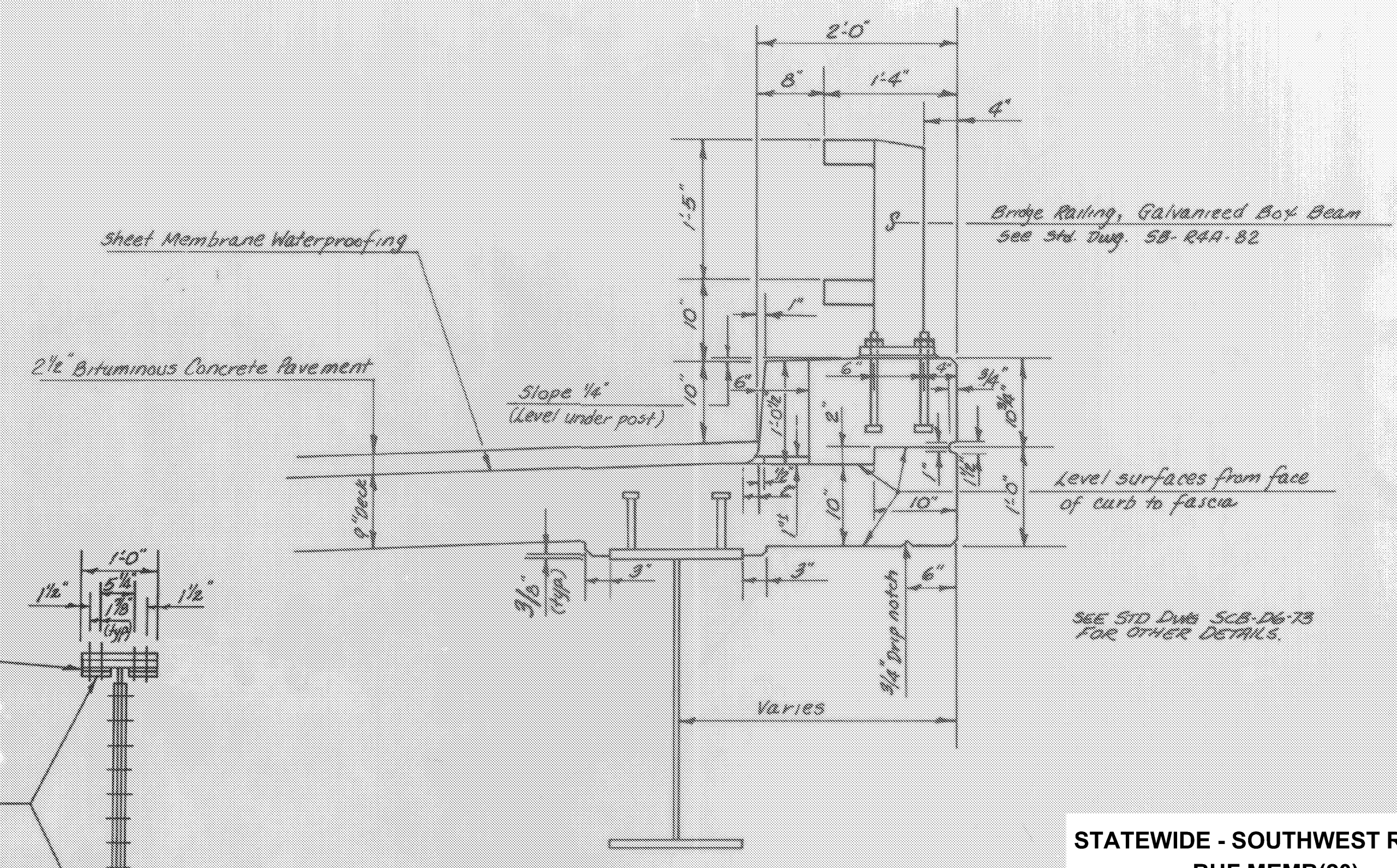
INTERMEDIATE DIAPHRAGM DETAILS *
3/4" = 1'-0"

NOTES: 1. LIVE LOAD DEFLECTION (MAX.) = 5/16"
2. DEAD LOAD DEFLECTION = AS SHOWN ON DL DEF. DIAGRAM (DUE TO BEAMS, DECK, DIAPHRAGMS, CURBS, RAIL & PAVEMENT)
3. VERTICAL CURVE CAMBER = 4"
4. TOTAL CAMBER = AS SHOWN ON CAMBER DIAGRAM.



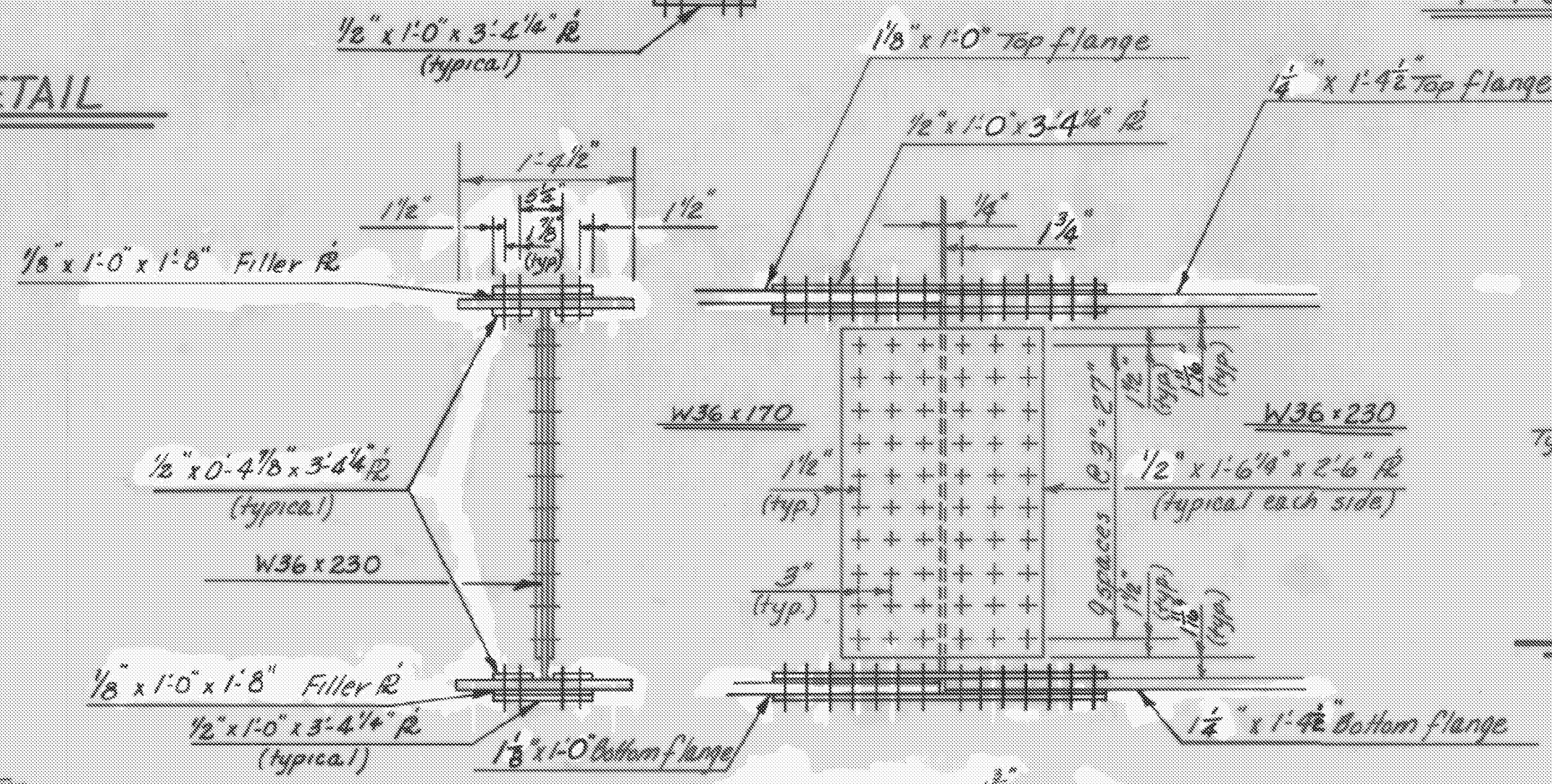
HAUNCH DETAIL
1" = 1'-0"

* CONNECTION PLATES SHOWN ON STD. DWG. SCB-D1-71, DETAIL D FOR INTERMEDIATE DIAPHRAGMS, MAY BE USED IN LIEU OF THOSE SHOWN ON THESE PLANS.

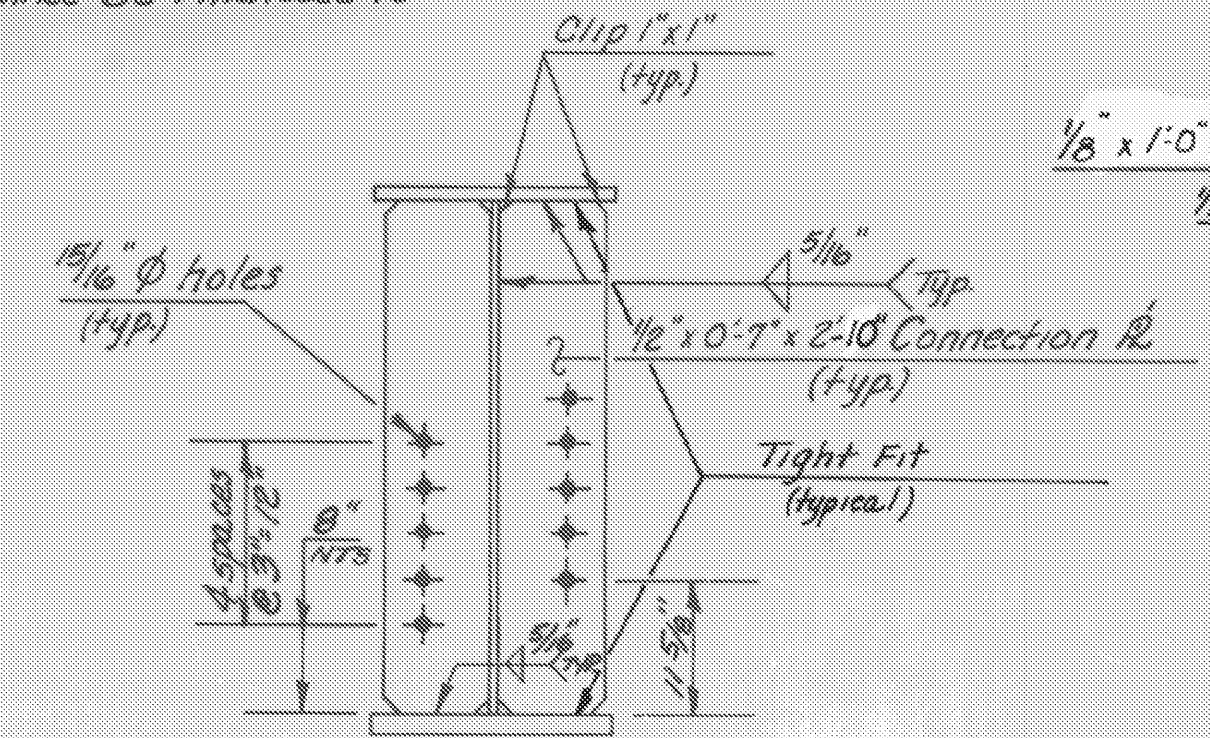


CURB AND RAIL DETAIL
1" = 1'-0"

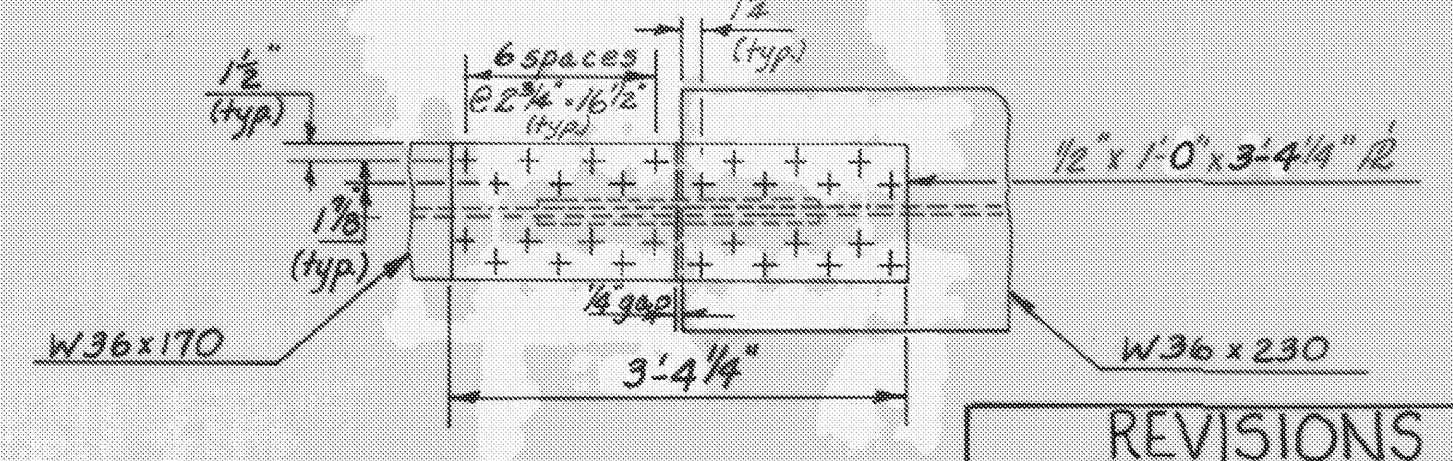
STATEWIDE - SOUTHWEST REGION
BHF MEMB(20)
SHEET 25 OF 47
BRIDGE 15
FOR REFERENCE ONLY



INTERMEDIATE BEARING STIFFENER AT PIER *
1" = 1'-0"



INTERMEDIATE CONNECTION PLATE *
1" = 1'-0"



SPlice DETAILS
3/4" = 1'-0"

| REVISIONS | |
|---|--|
| NOVEMBER 1984 | |
| CONTRACTOR SELECTED OPTION 2 UNDER THE ITEM, STRUCTURAL STEEL | |
| SHEET BR 107A ADDED | |

| STATE OF VERMONT AGENCY OF TRANSPORTATION | |
|---|---------------------------------|
| TOWN OF ARLINGTON | Bridge No. 15 |
| HIGHWAY NO. VT. RTE. 7A | Log Sta. 250+43 |
| | Surv. Sta. 186+62.50 |
| VT. RTE. 7A OVER ROARING BRANCH DIAPHRAGM, CURB, SPLICE, DETAILS | |
| Designed by G.S. ROGERS | Drawn by D.W. NEWTON |
| Checked by G.S. ROGERS | Bridge Design Supervisor |
| date 1/84 | F.W. Balkum date 2/84 |
| PROJECT ARLINGTON | PROJECT NO. BRS-0137 (7) |
| Bridge Sheet No. BR 107A | Sheet 26 of 83 |