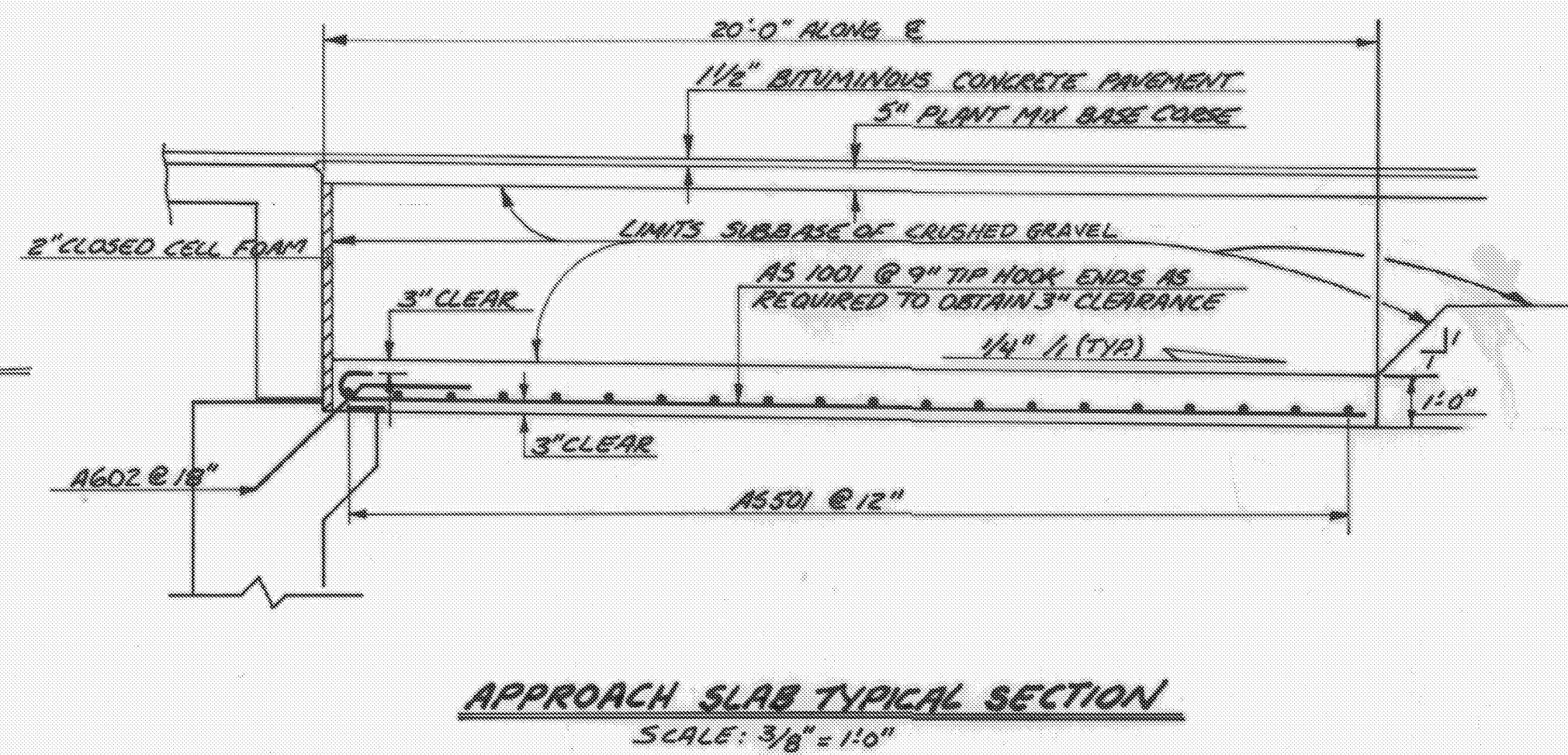
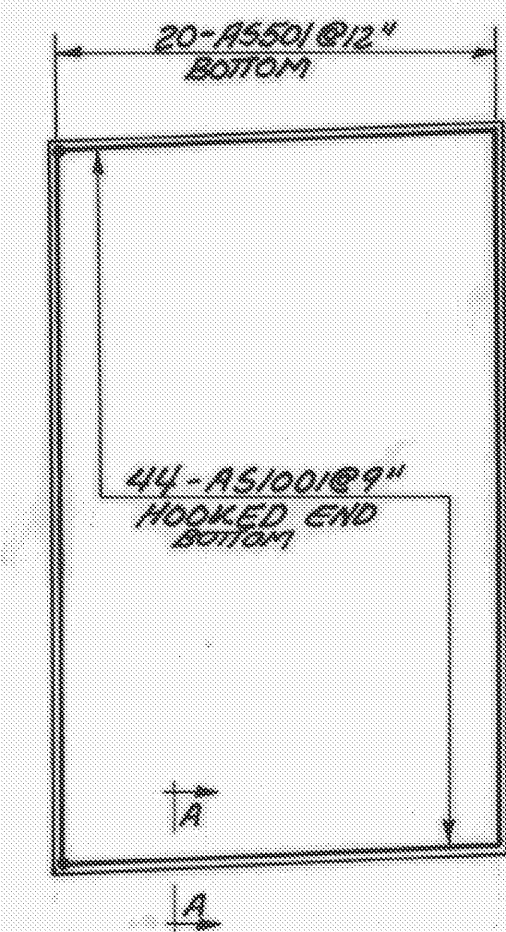


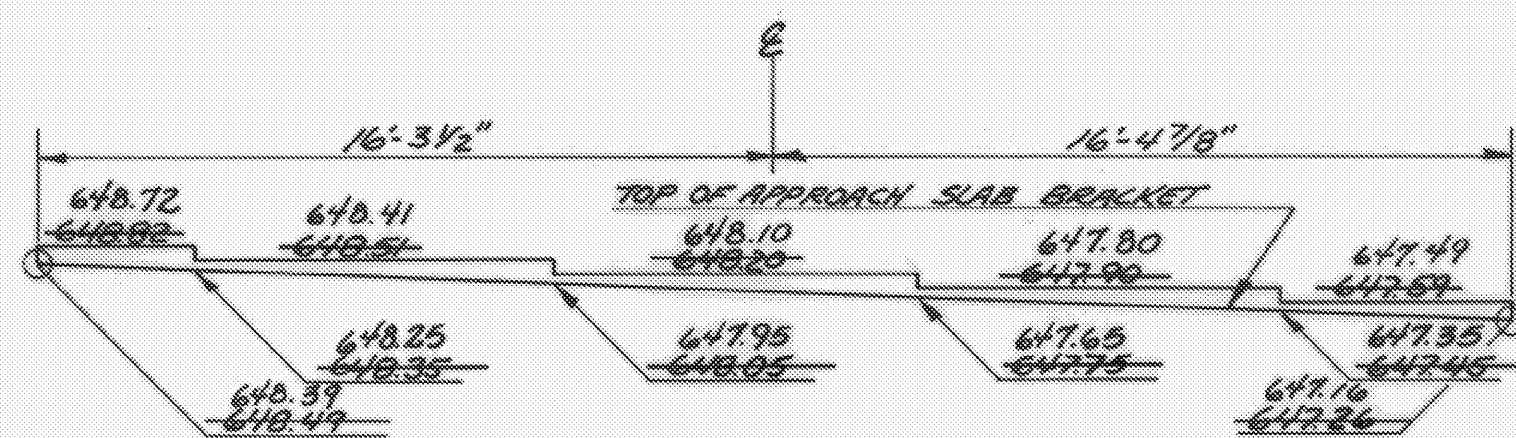
DECK REINFORCING PLAN
SCALE: 1" = 10'-0"



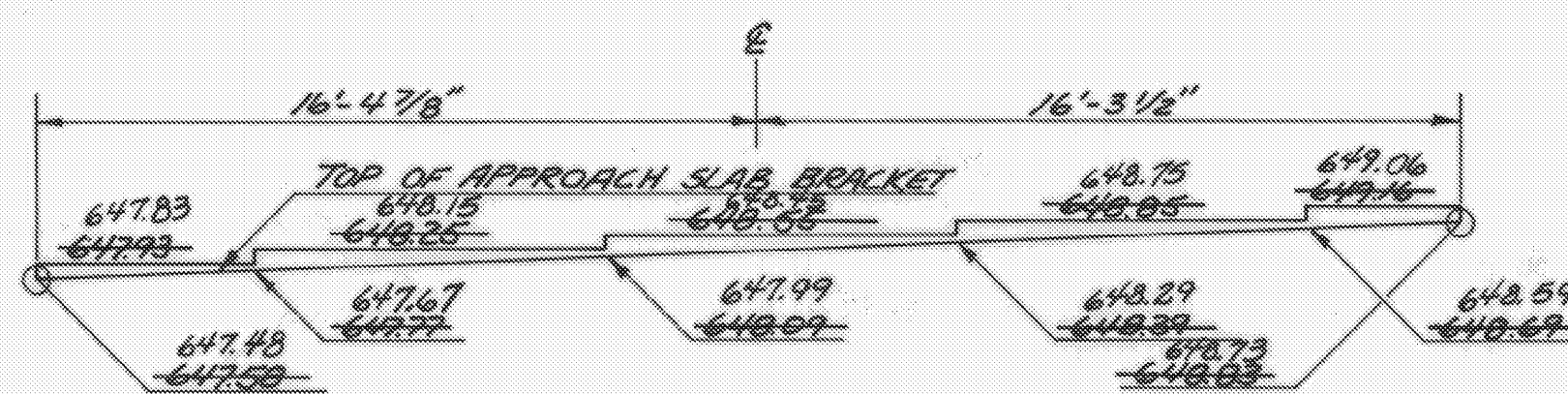
APPROACH SLAB TYPICAL SECTION
SCALE: 3/8" = 1'-0"



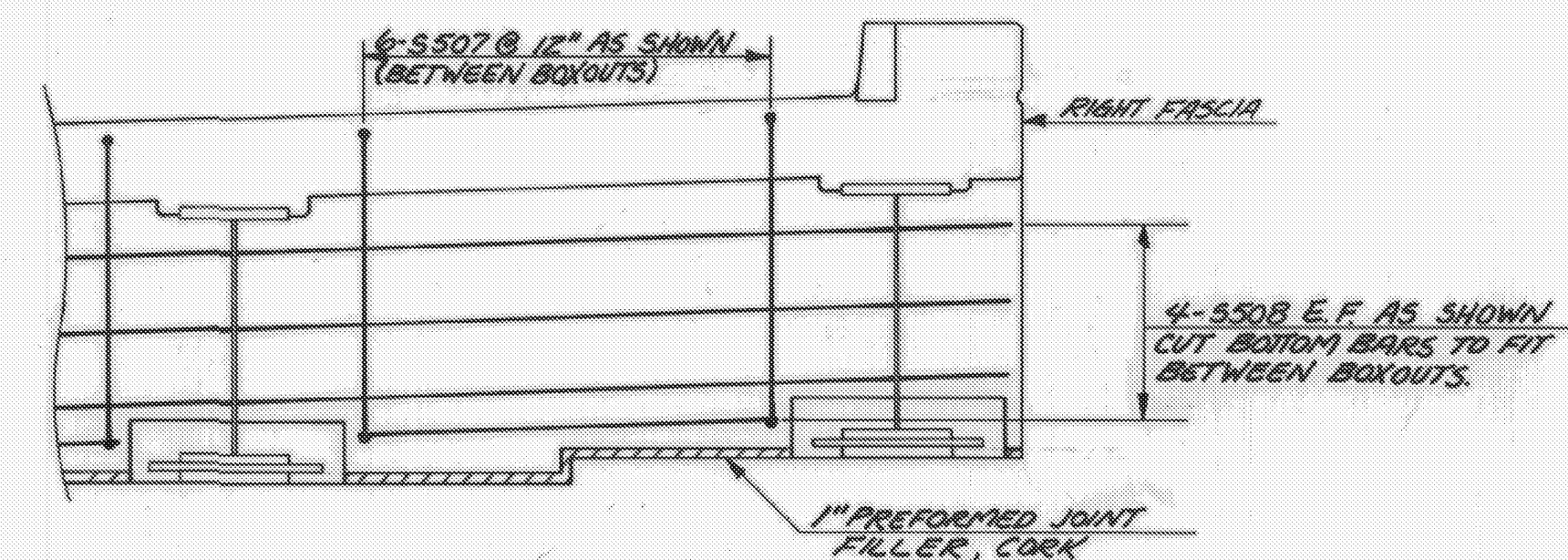
APPROACH SLAB REINFORCING PLAN
SCALE: 1/8" = 1'-0"



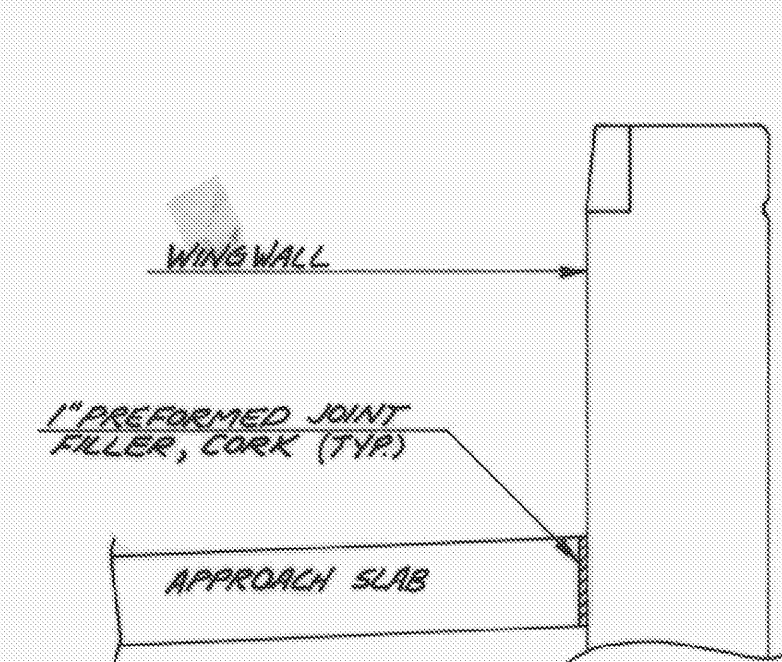
FACING BACK OF ABUTMENT #2
SCALE: 1/4" = 1'-0"



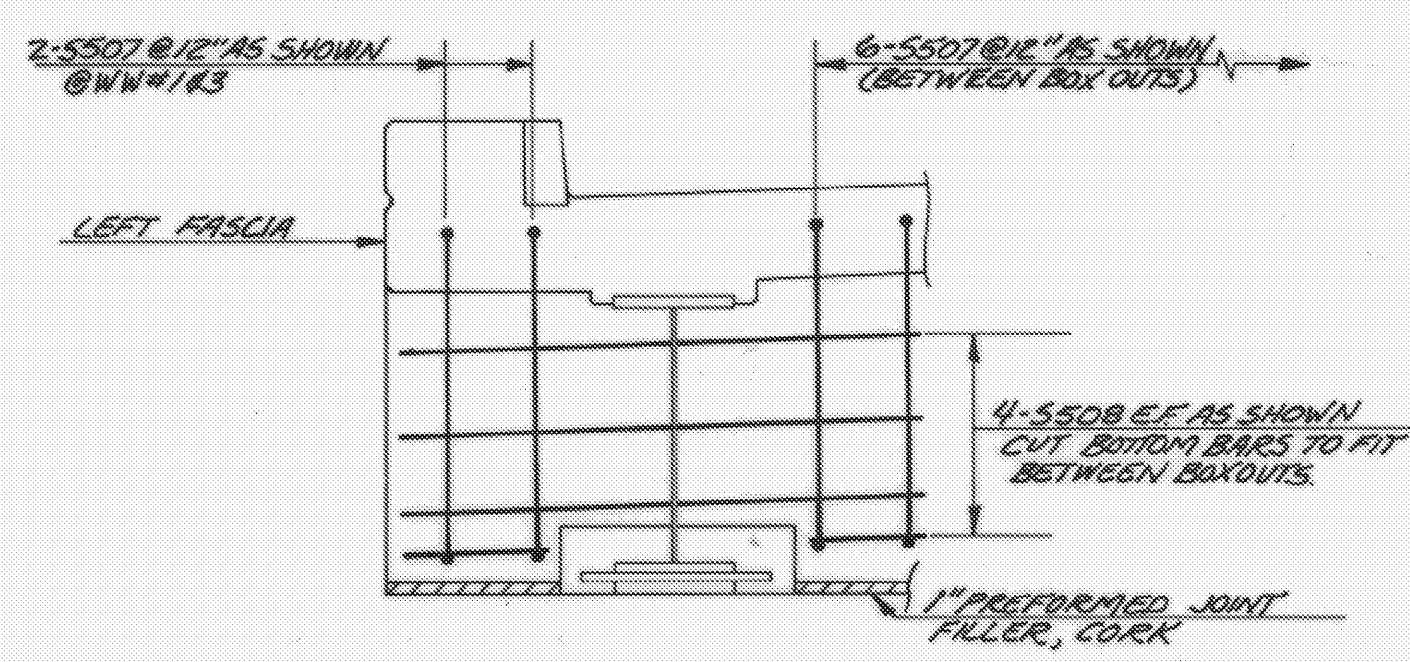
FACING BACK OF ABUTMENT #1
SCALE: 1/4" = 1'-0"



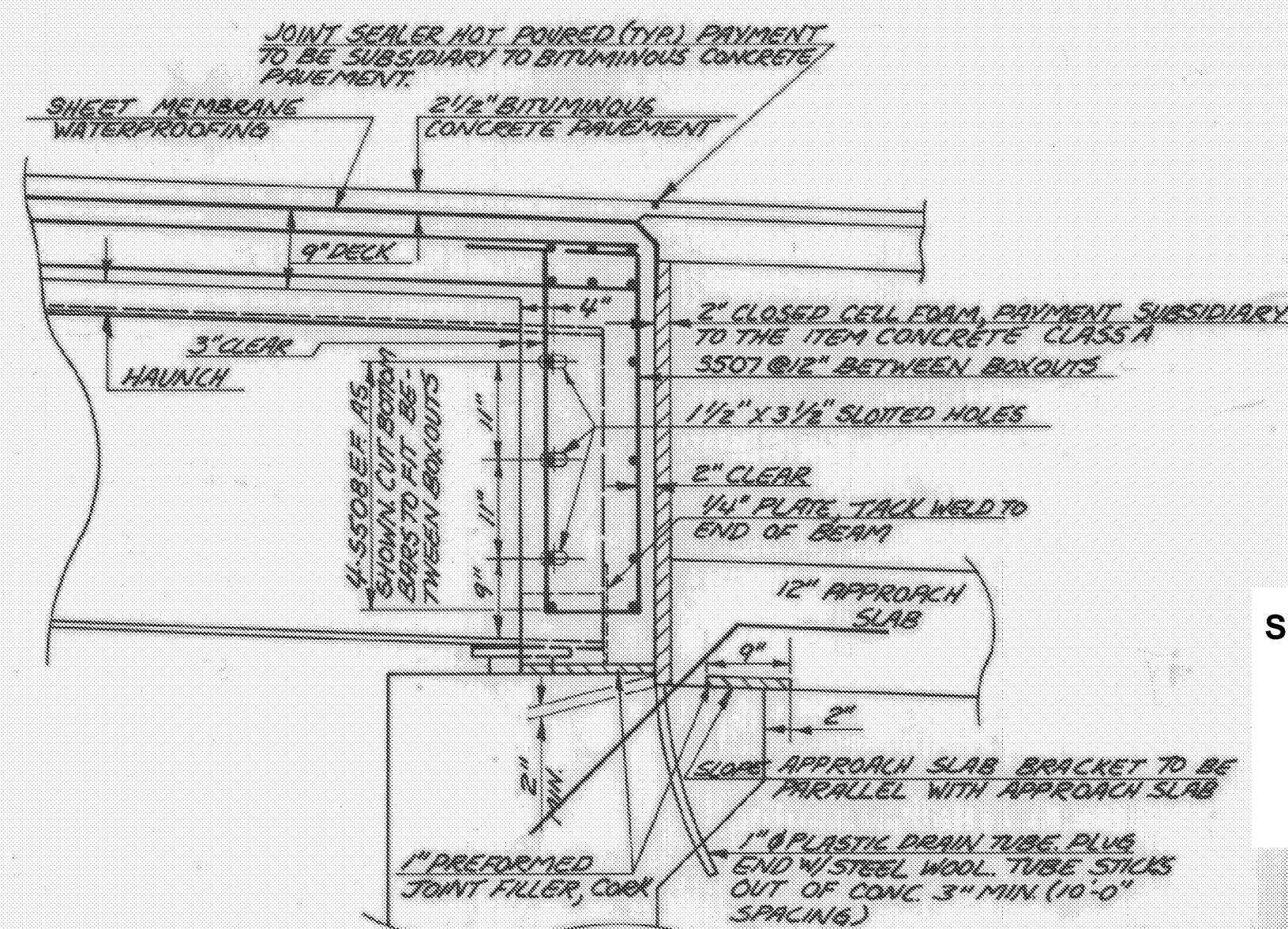
CURTAIN WALL ELEVATION
SCALE: 1/2" = 1'-0"



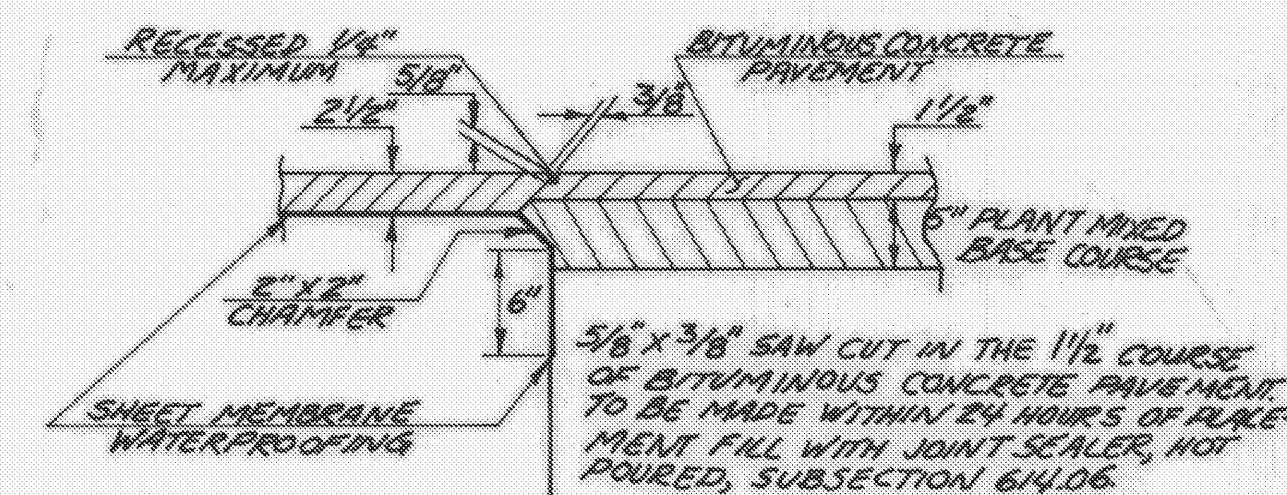
SECTION A-A
SCALE: 1/2" = 1'-0"



CURTAIN WALL ELEVATION @ LT. FASCIA
SCALE: 1/2" = 1'-0"



CURTAIN WALL DETAIL
SCALE: 3/4" = 1'-0"



JOINT SEALER DETAIL
SCALE: 3/32" = 1"

STATEWIDE - SOUTHWEST REGION
BHF MEMB(20)
SHEET 24 OF 47
BRIDGE 15
FOR REFERENCE ONLY

REVISIONS
NOVEMBER 1984

CONTRACTOR SELECTED OPTION 2 UNDER THE ITEM, STRUCTURAL STEEL

STATE OF VERMONT
AGENCY OF TRANSPORTATION

TOWN OF ARLINGTON	Bridge No. 15
HIGHWAY NO. VT. RTE. 7A	Log Sta. 250+43
	Surv. Sta. 186+68.50

VT. 7A OVER ROARING BRANCH
DECK, CURTAIN WALLS & APPROACH SLABS

Designed by G. S. ROGERS	Drawn by L. C. GATES
Checked by G. S. ROGERS	Bridge Design Supervisor
date 1/84	F. W. Bolkum date 2/84

PROJECT ARLINGTON	PROJECT NO. BRS-0137(7)
Bridge Sheet No. BR 106	Sheet 25 of 83