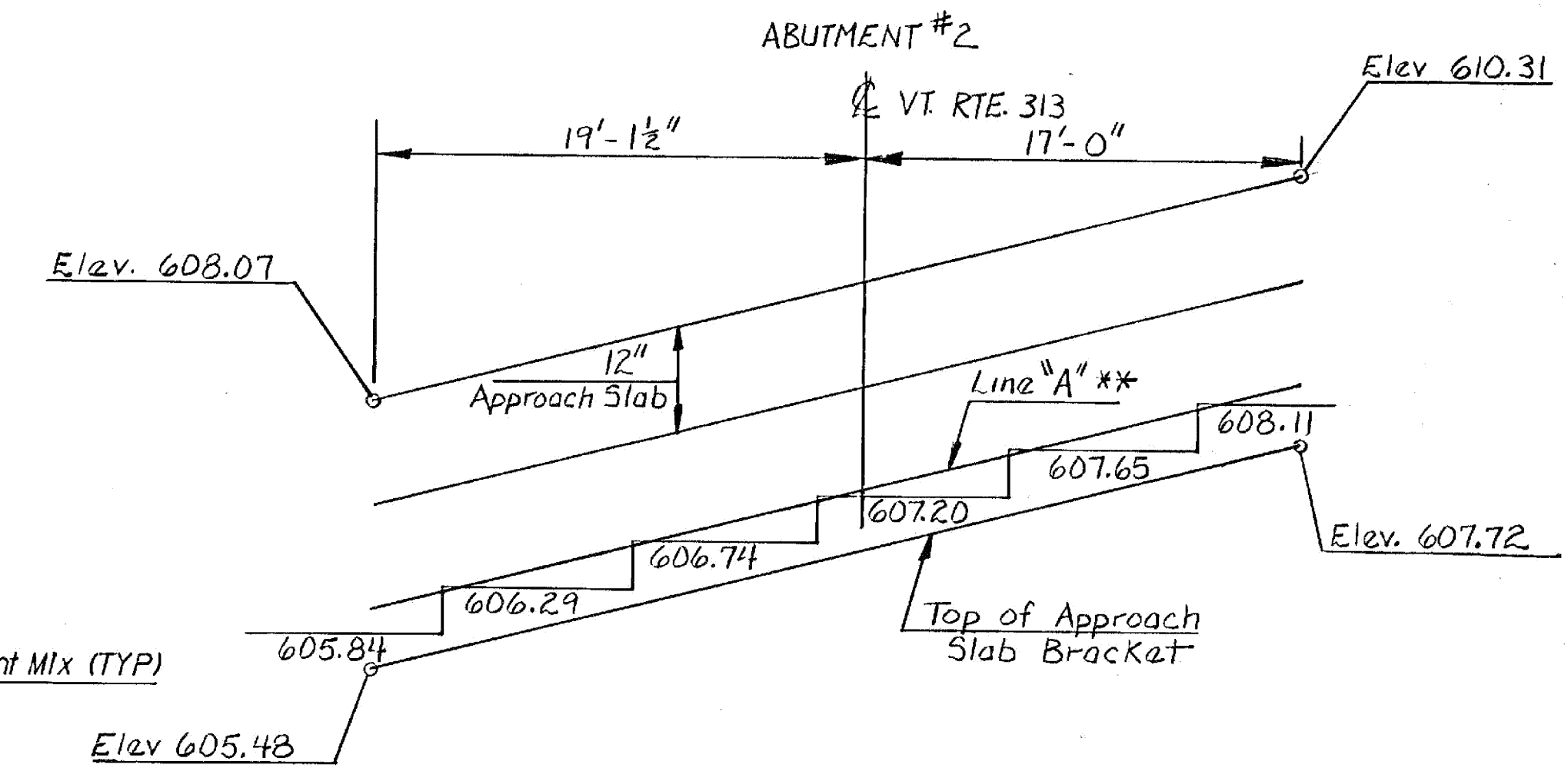
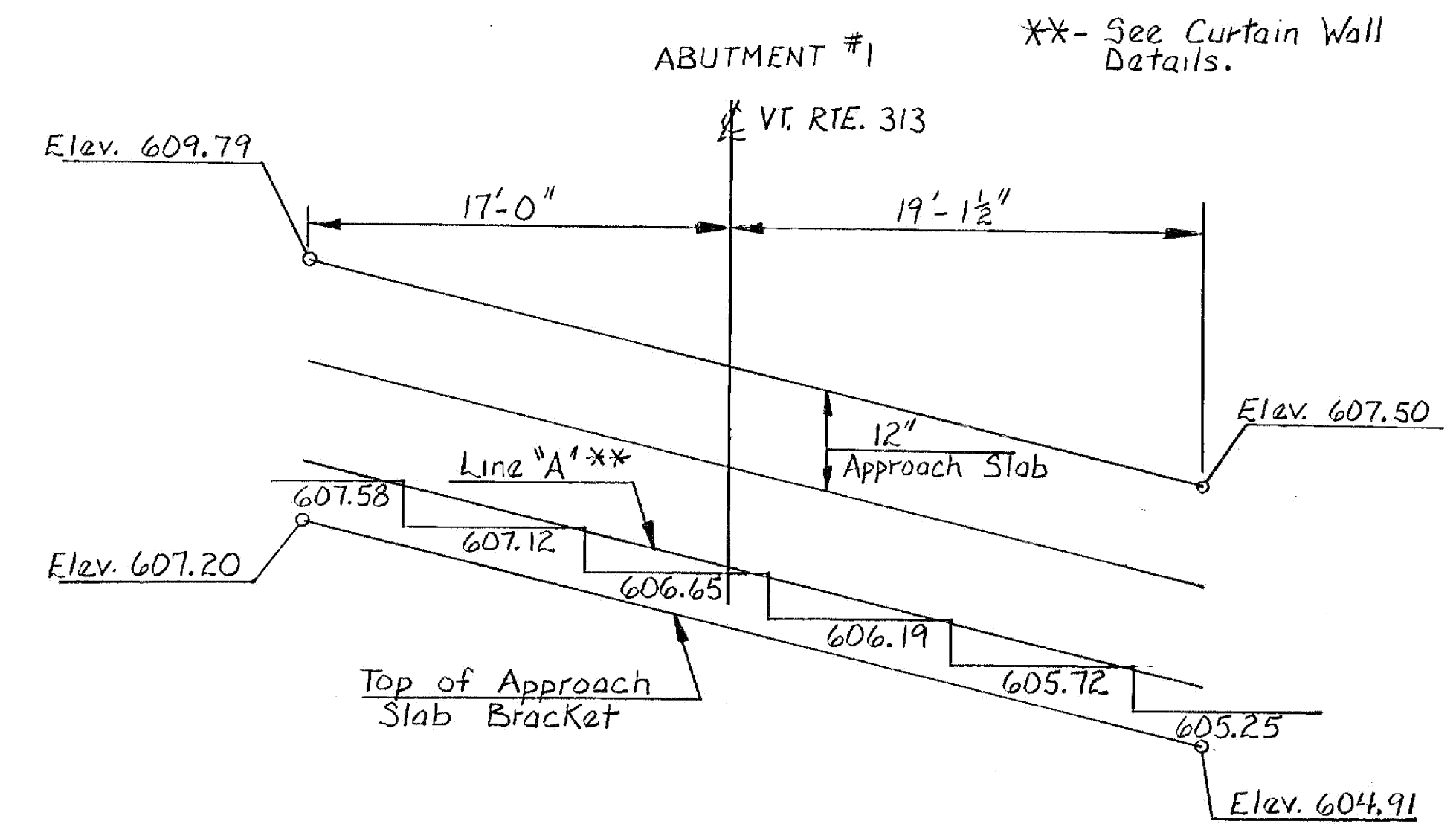


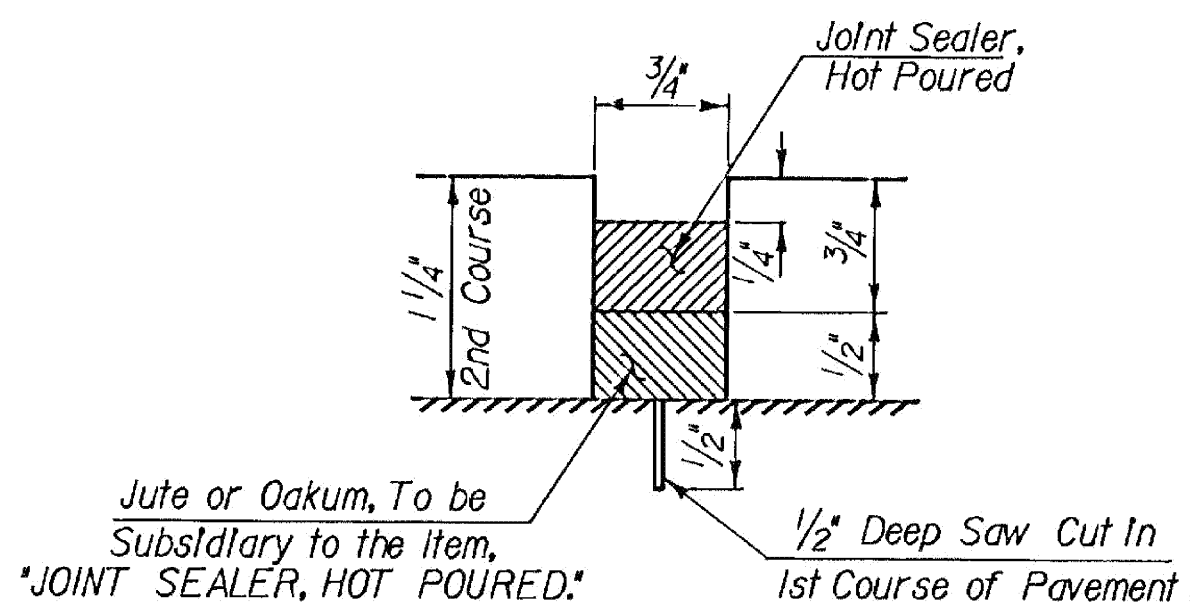
APPROACH SLAB SECTIONS

Scale $\frac{3}{8}'' = 1'-0''$



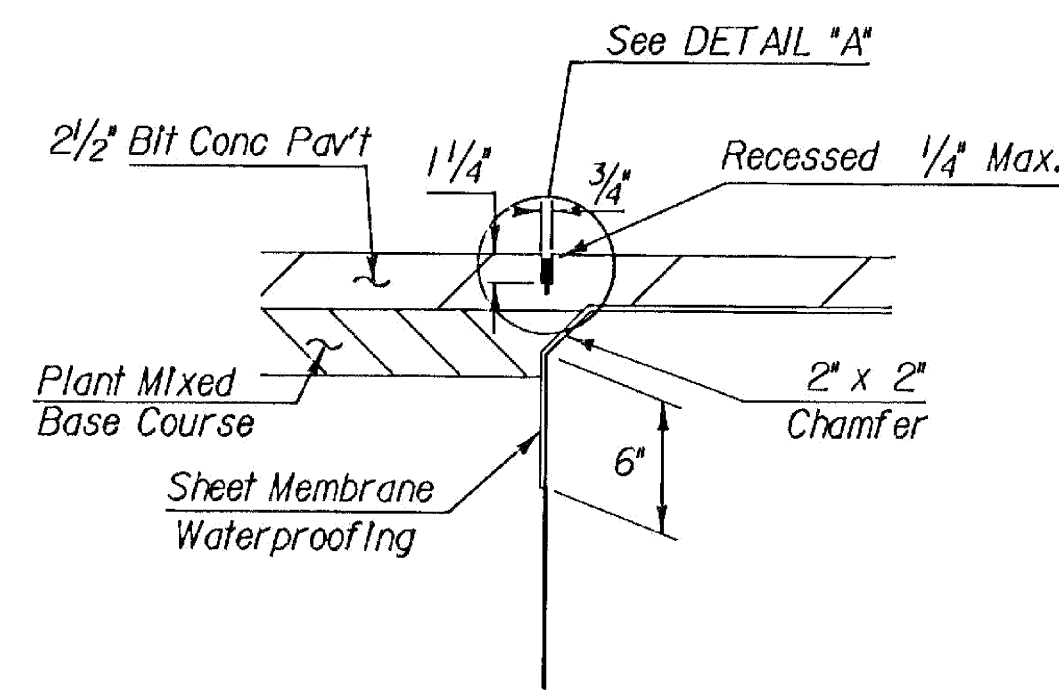
BRIDGE SEAT
SCALE: HORIZ. $\frac{3}{8}'' = 1'-0''$

STATEWIDE - SOUTHWEST REGION
BHF MEMB(20)
SHEET 17 OF 47
BRIDGE 5
FOR REFERENCE ONLY



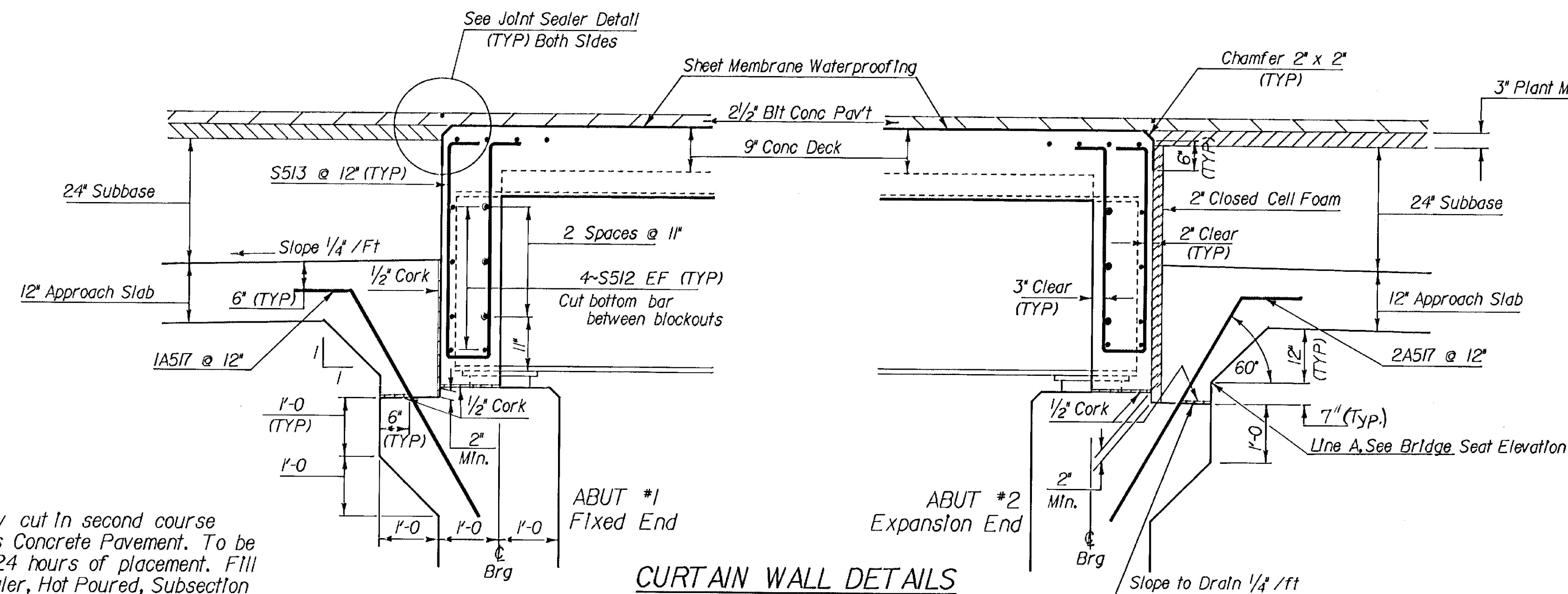
DETAIL "A"
Scale 1" = 1"

NOTE: See STD DWG SCB - D9 - 71, Detail B, for additional details, except as noted.



JOINT SEALER DETAIL

Scale $\frac{1}{2}'' = 1'-0''$



CURTAIN WALL DETAILS

Scale $\frac{3}{4}'' = 1'-0''$

$1\frac{1}{4}'' \times \frac{3}{4}''$ saw cut in second course of Bituminous Concrete Pavement. To be made within 24 hours of placement. Fill with Joint Sealer, Hot Poured, Subsection 614.06.

**STATE OF VERMONT
AGENCY OF TRANSPORTATION**

Town Of	Arlington	Bridge No.	5
Highway No.	Vt Rte 313	Log Sta.	339.96
		Surv. Sta.	339.95.09
Vt Rte 313 over the Batten Kill			
Approach Slab Details			
Designed By	S. Farnsworth	Drawn By	E. Blodgett
Checked By	K. R. Sikora	Bridge Design Supervisor	F. W. Bolcum
	2/84	Date	8/84
PROJECT	Arlington	PROJECT NO.	BRS 0108(2)
I.G.C. Info.	QSALE302378F160AS.DGN		
Bridge Sheet No.	BR506	Sheet	26 of 105