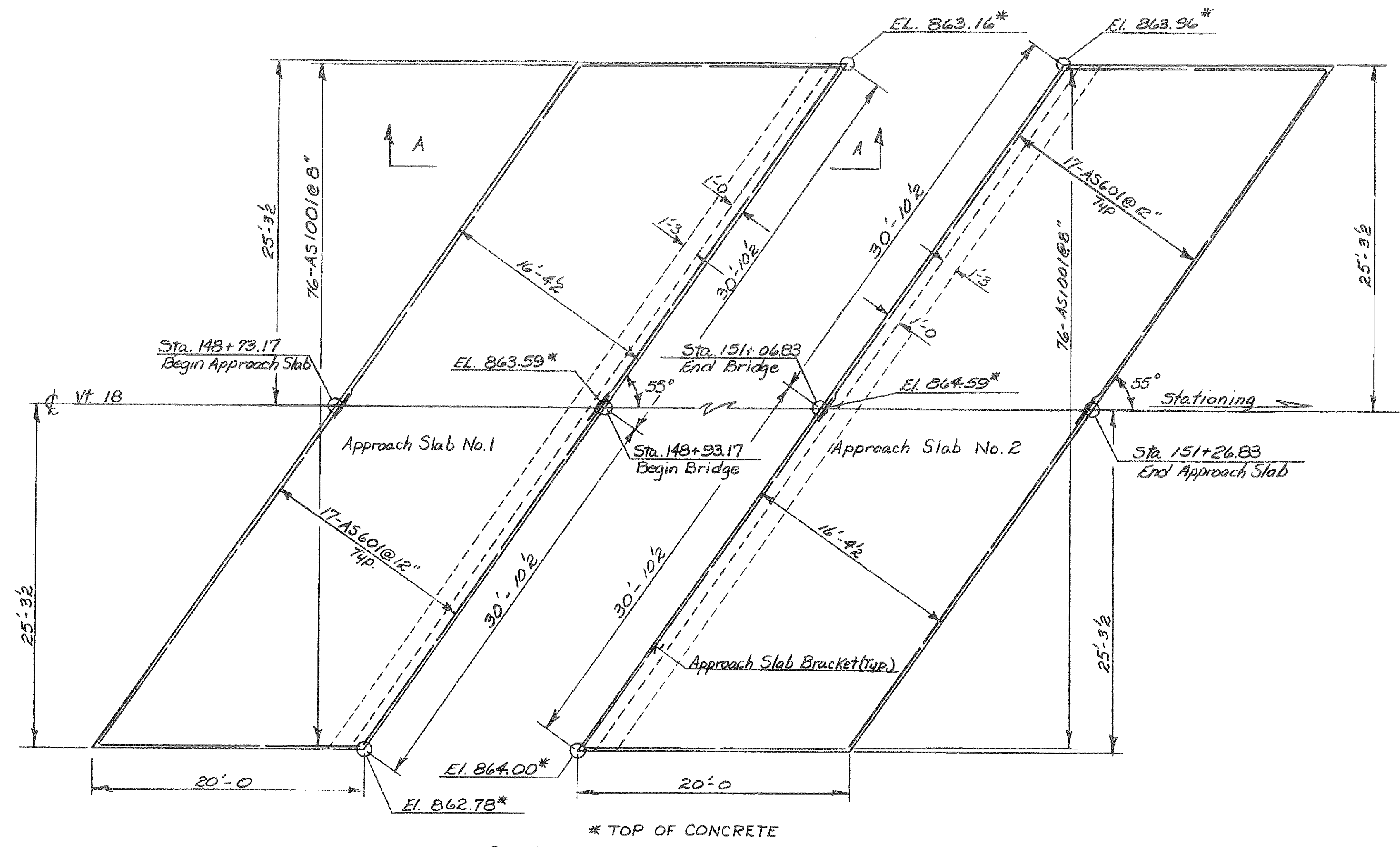
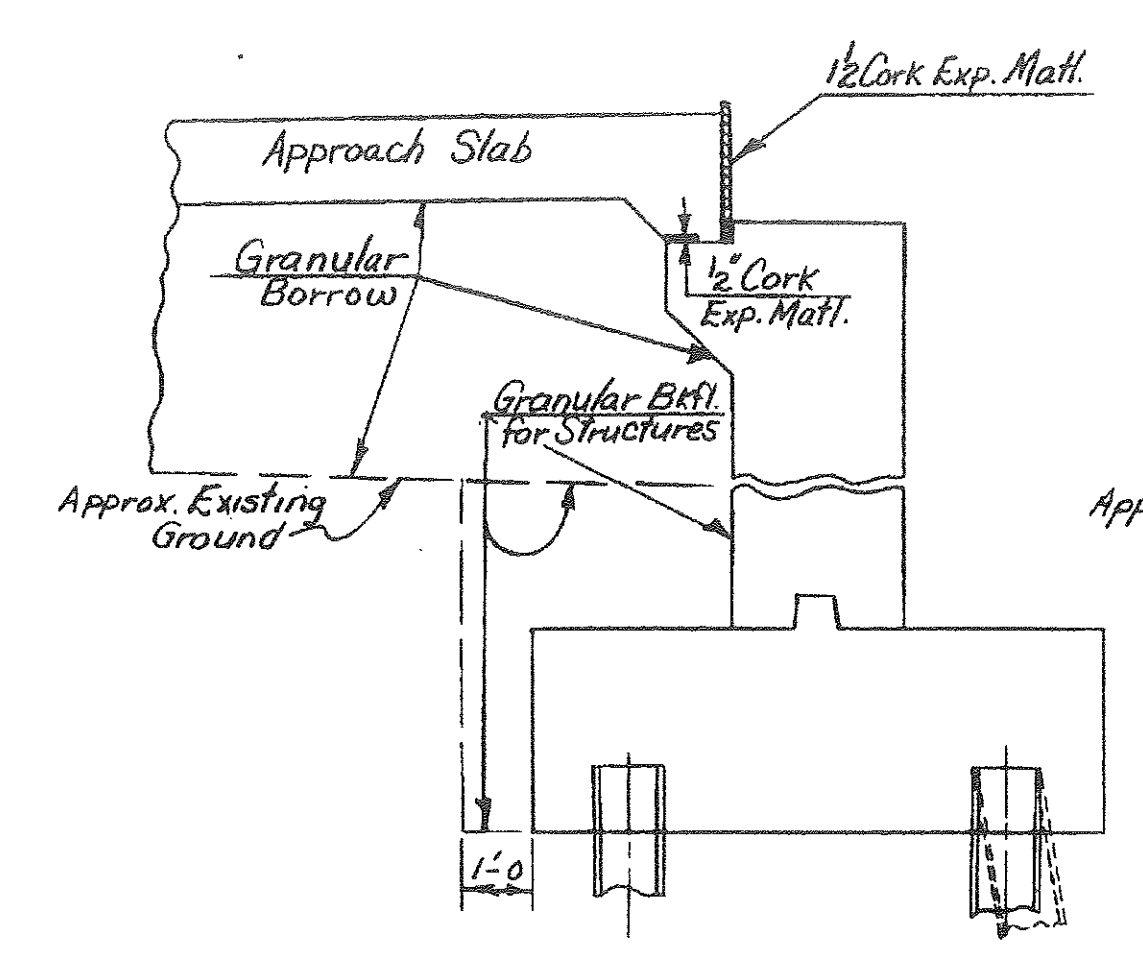


STATEWIDE - N.E. REGION  
 BHF MEMB(19)  
 SHEET 75 OF 80  
 BRIDGE No. 9  
 FOR REFERENCE ONLY

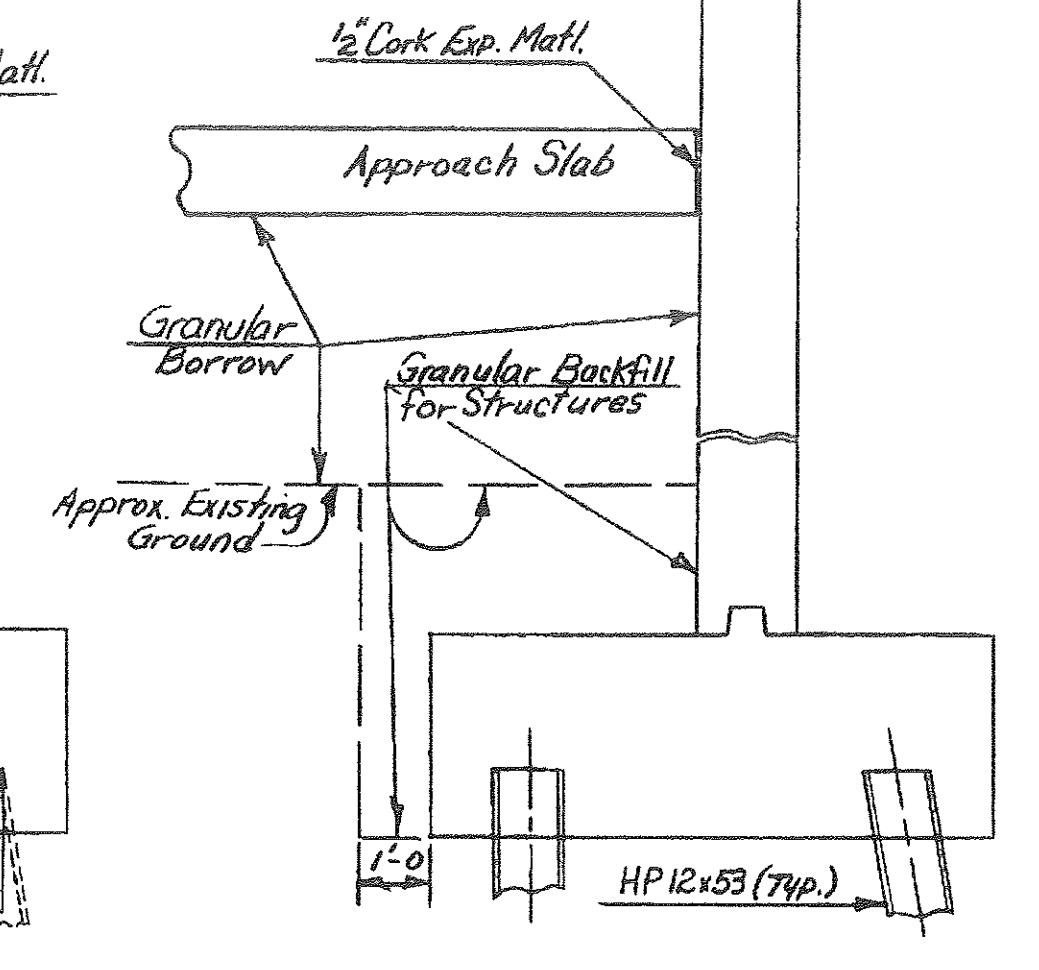
- NOTES**
1. For Railing details see Std. Sht SB-R4-73 and Sht BR91B
  2. For limits of Structure Excavation on both abutments and per see X-Sections.



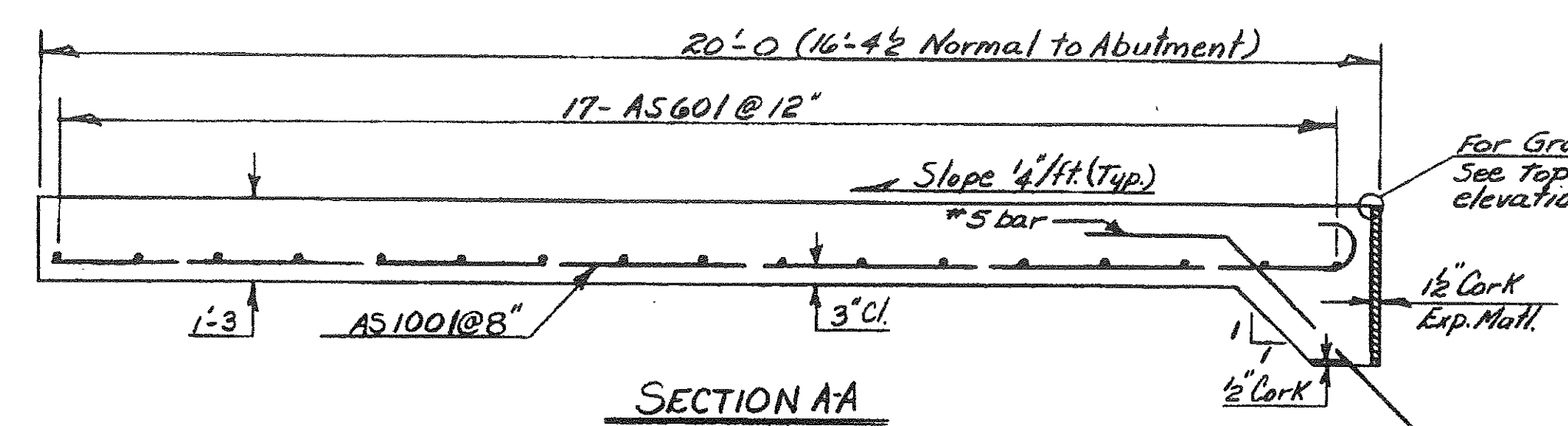
**APPROACH SLABS**  
 Scale: 3/16" = 1'-0"



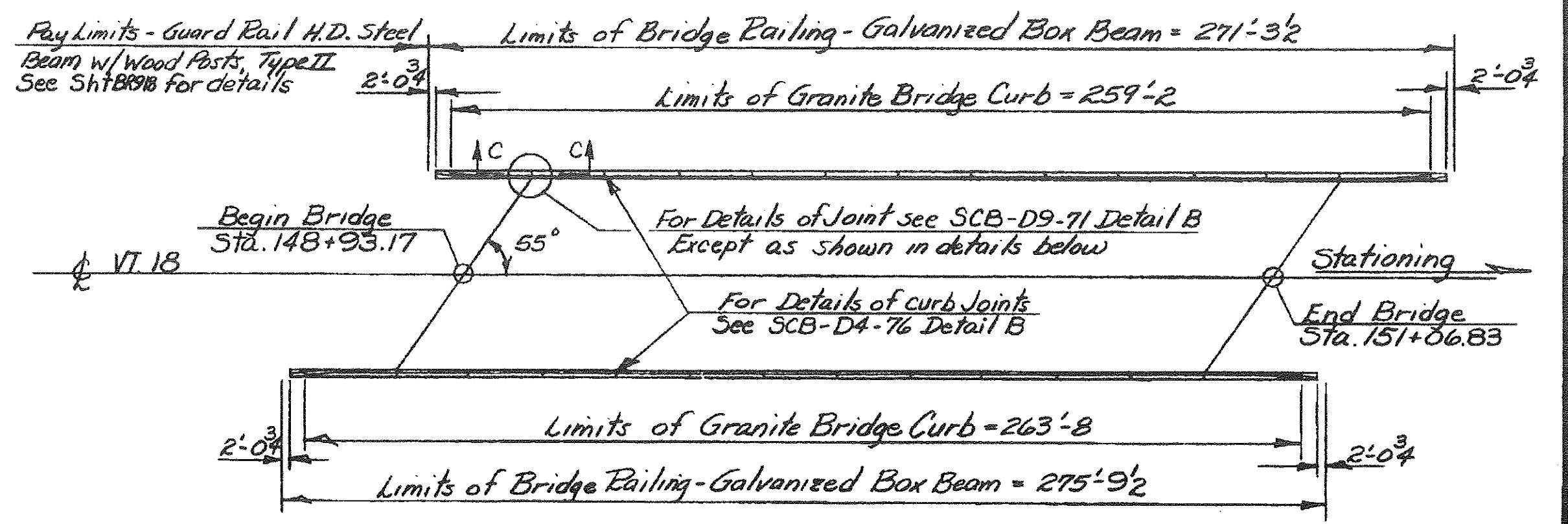
**ABUTMENT NO. 1 BACKFILL**  
 (ABUTMENT NO. 2 SIMILAR)  
 Scale: 3/8" = 1'-0"



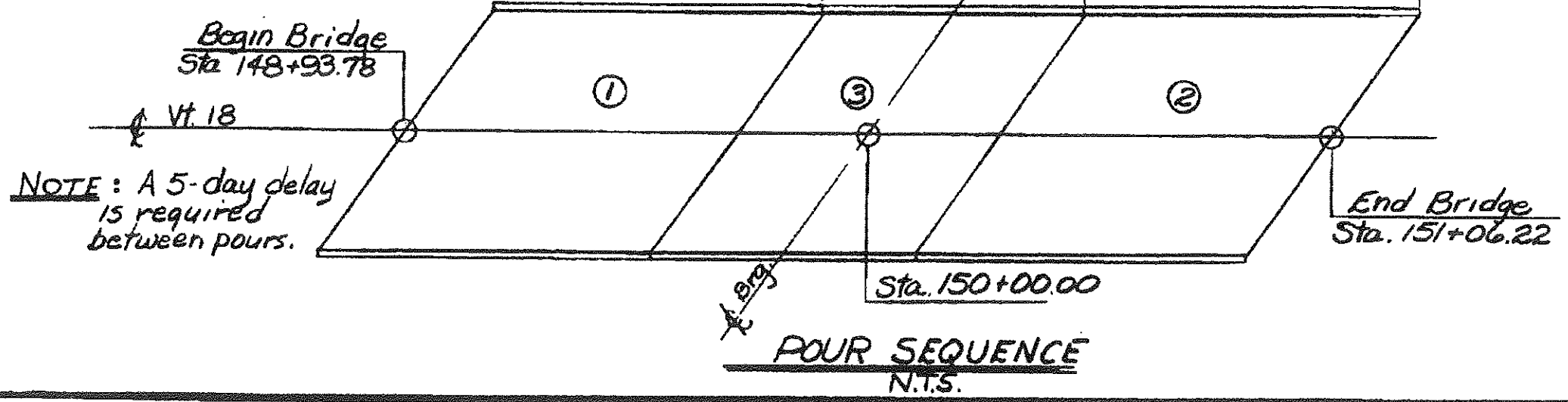
**ABUT. NO. 1 WINGWALL BACKFILL**  
 (ABUT. NO. 2, See X-Sections)  
 Scale: 3/8" = 1'-0"



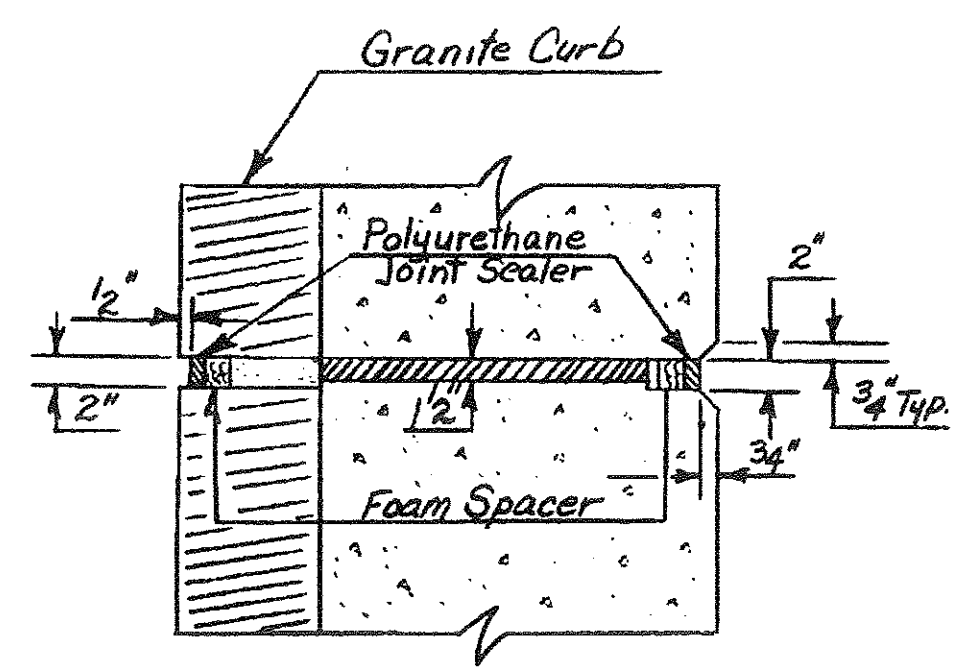
**SECTION AA**  
 Scale: 1/2" = 1'-0"



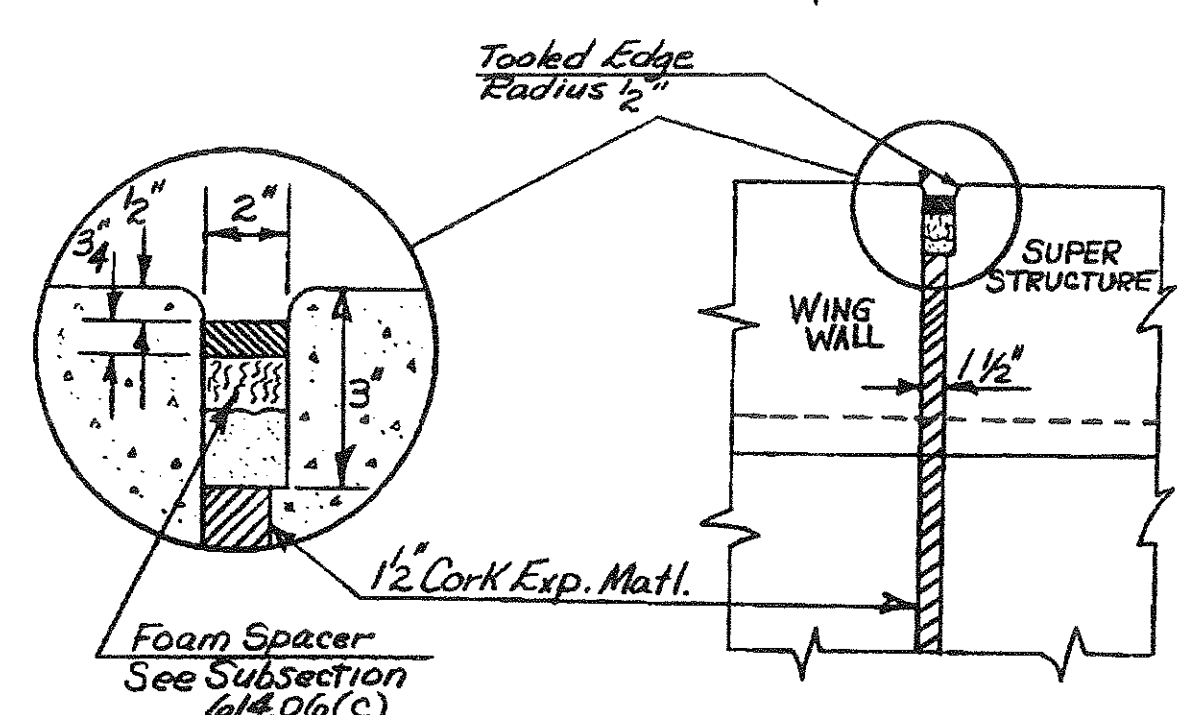
**CURB & RAILING PLAN**  
 Scale: 1" = 30'



**POUR SEQUENCE**  
 N.T.S.



**CURB EXPANSION JOINT DETAIL**  
 N.T.S.



**SECTION CC**  
 N.T.S.

<b>STATE OF VERMONT</b>	
<b>AGENCY OF TRANSPORTATION</b>	
TOWN OF WATERFORD	Bridge No. 9
HIGHWAY NO. VT 18	Log Sta.
VT. 18 OVER I 93	Surv. Sta. 150+00
APPROACH SLAB, CURB, RAILING & MISC. DETAILS	
Designed by D.E. LATHROP	Drawn by D.E. LATHROP
Checked by W.E. AHEARN date 7/80	Bridge Design Supervisor R.L. Oakley date 7/80
PROJECT WATERFORD	PROJECT NO. I 93-1(3) c/2
Bridge Sheet No. BR 915	Sheet 191 of 531