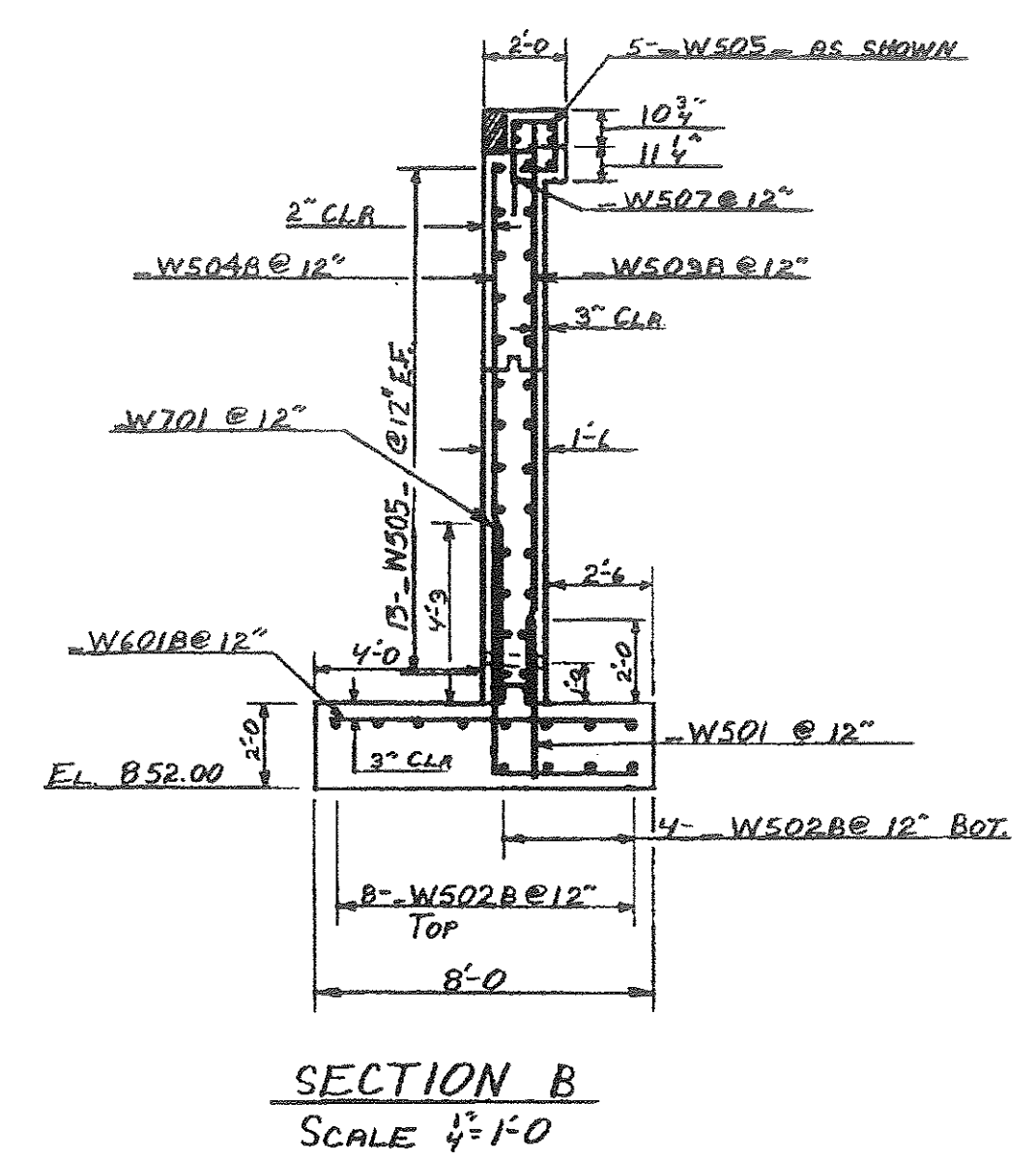
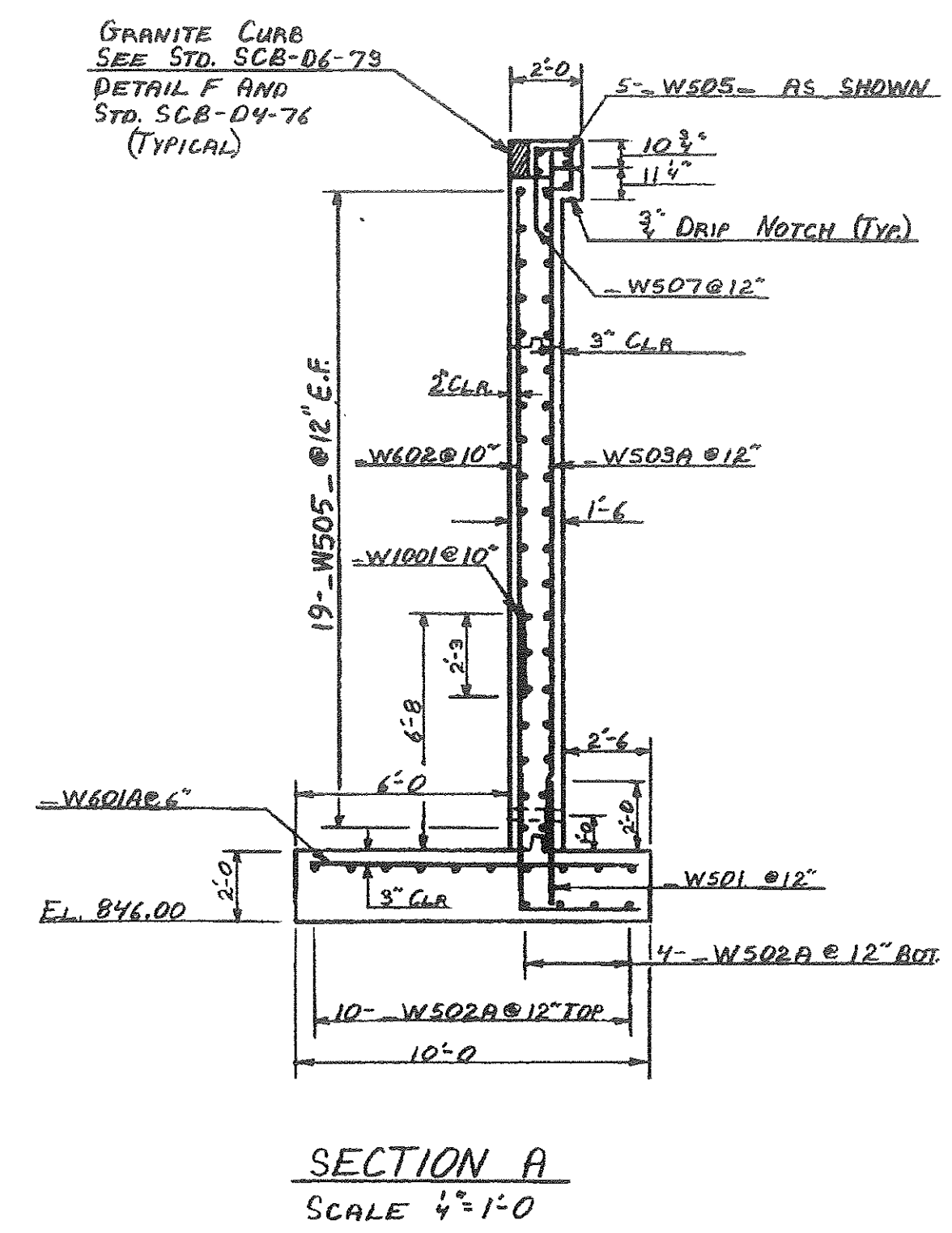
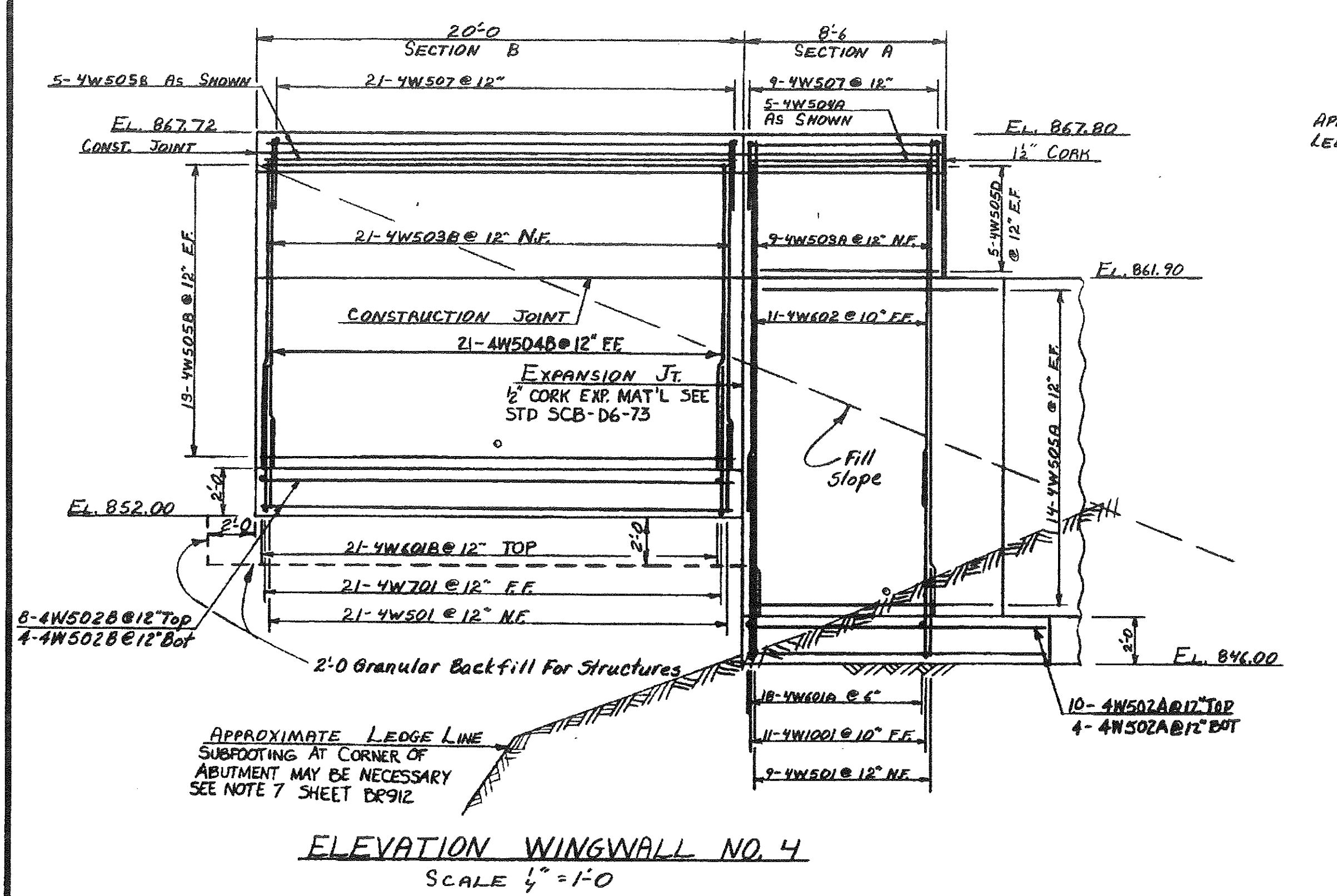


ABUTMENT NO. 2 FOOTING REINFORCING PLAN
SCALE 3/16" = 1'-0"

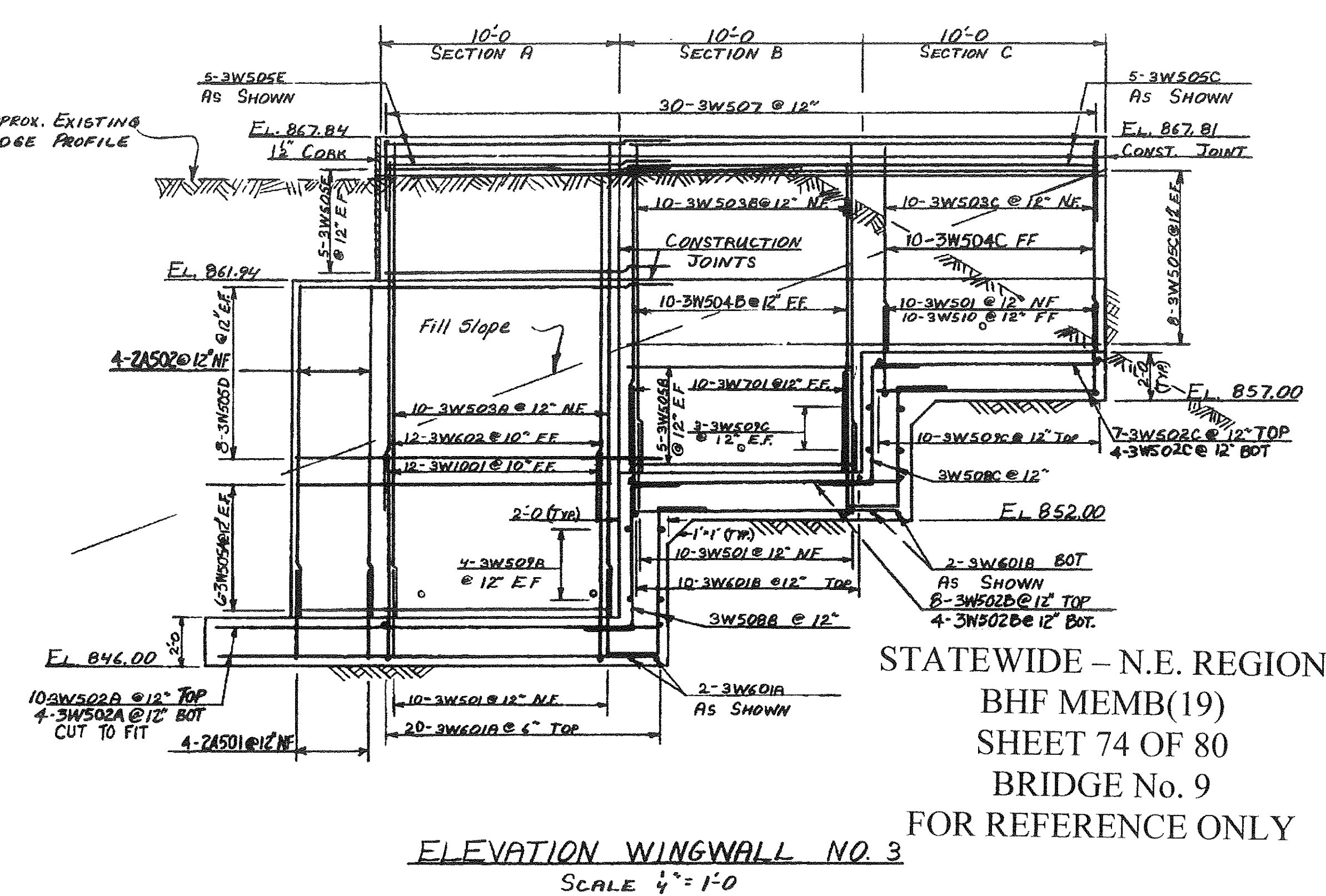


SECTION A
SCALE 1/4" = 1'-0"

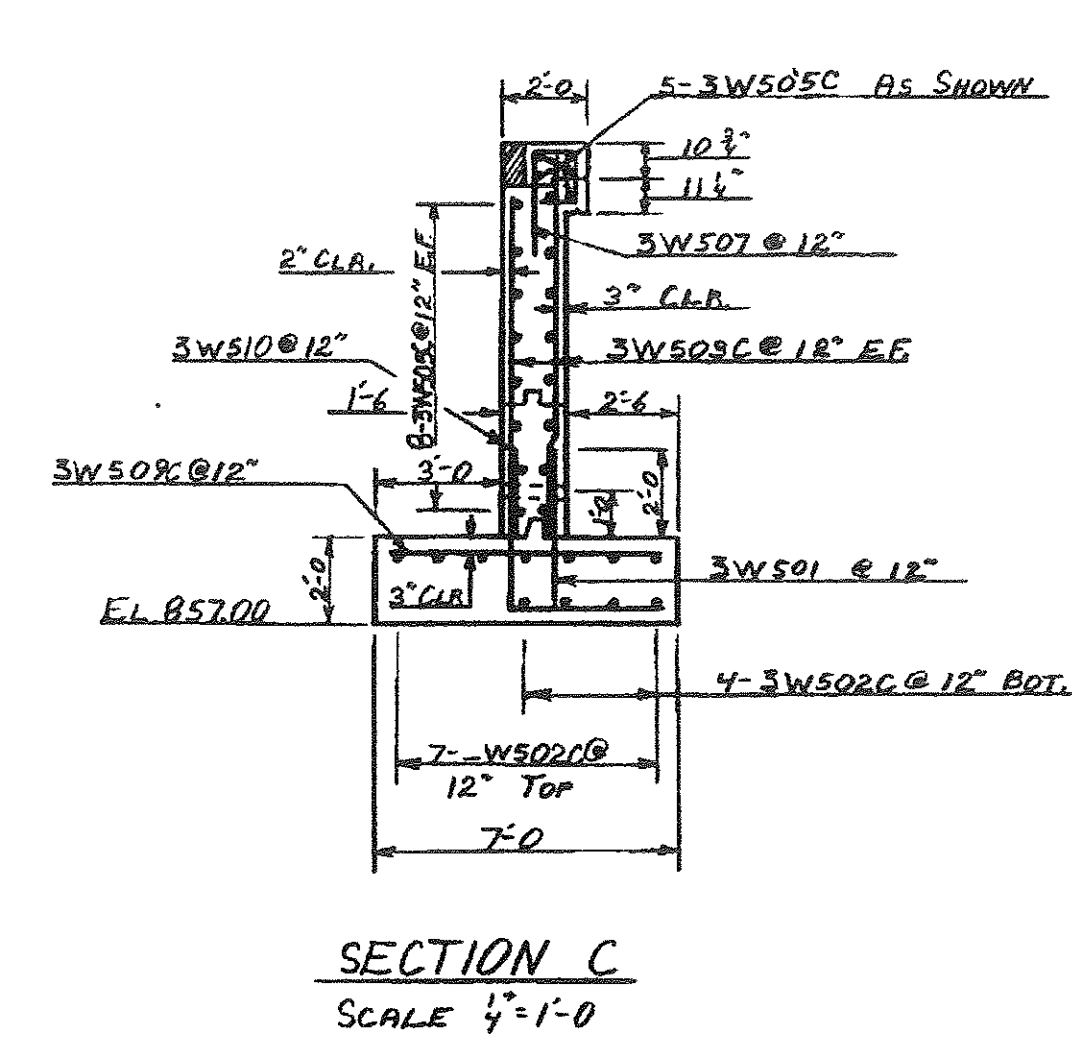
SECTION B
SCALE 1/4" = 1'-0"



ELEVATION WINGWALL NO. 4
SCALE 1/4" = 1'-0"



ELEVATION WINGWALL NO. 3
SCALE 1/4" = 1'-0"



SECTION C
SCALE 1/4" = 1'-0"

STATEWIDE - N.E. REGION
BHF MEMB(19)
SHEET 74 OF 80
BRIDGE No. 9
FOR REFERENCE ONLY

STATE OF VERMONT	
AGENCY OF TRANSPORTATION	
TOWN OF WATERFORD	Bridge No. 9
HIGHWAY NO. VT. 18	Log Sta. 150+00
VT. 18 OVER T 93	
WINGWALL NO. 3 & 4 DETAILS	
Designed by D.E. LATHROP	Drawn by DAVID WILLEY
Checked by M. CERUTTI date 7/80	Bridge Design Supervisor Z.L. DOLBY date 7/80
PROJECT WATERFORD	PROJECT NO. I 93-1(3)
Bridge Sheet No. BR913	Sheet 189 of 531

BR913