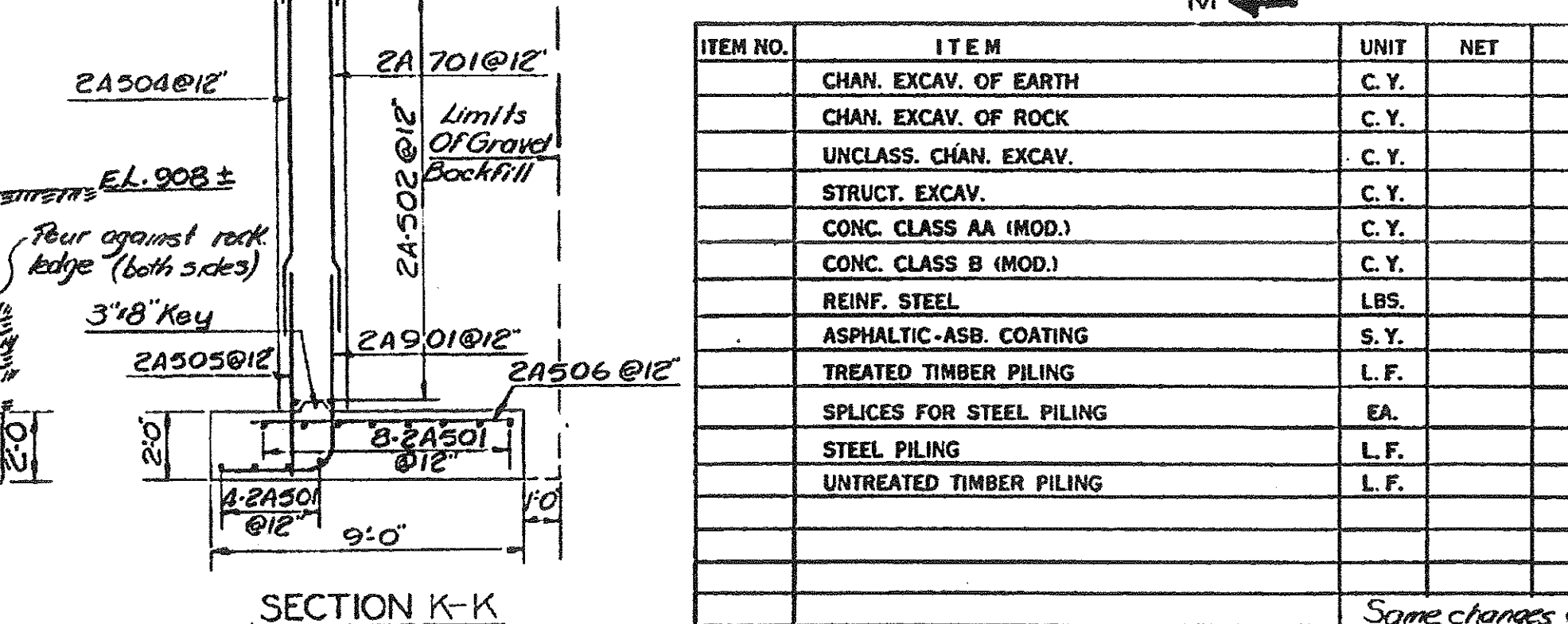
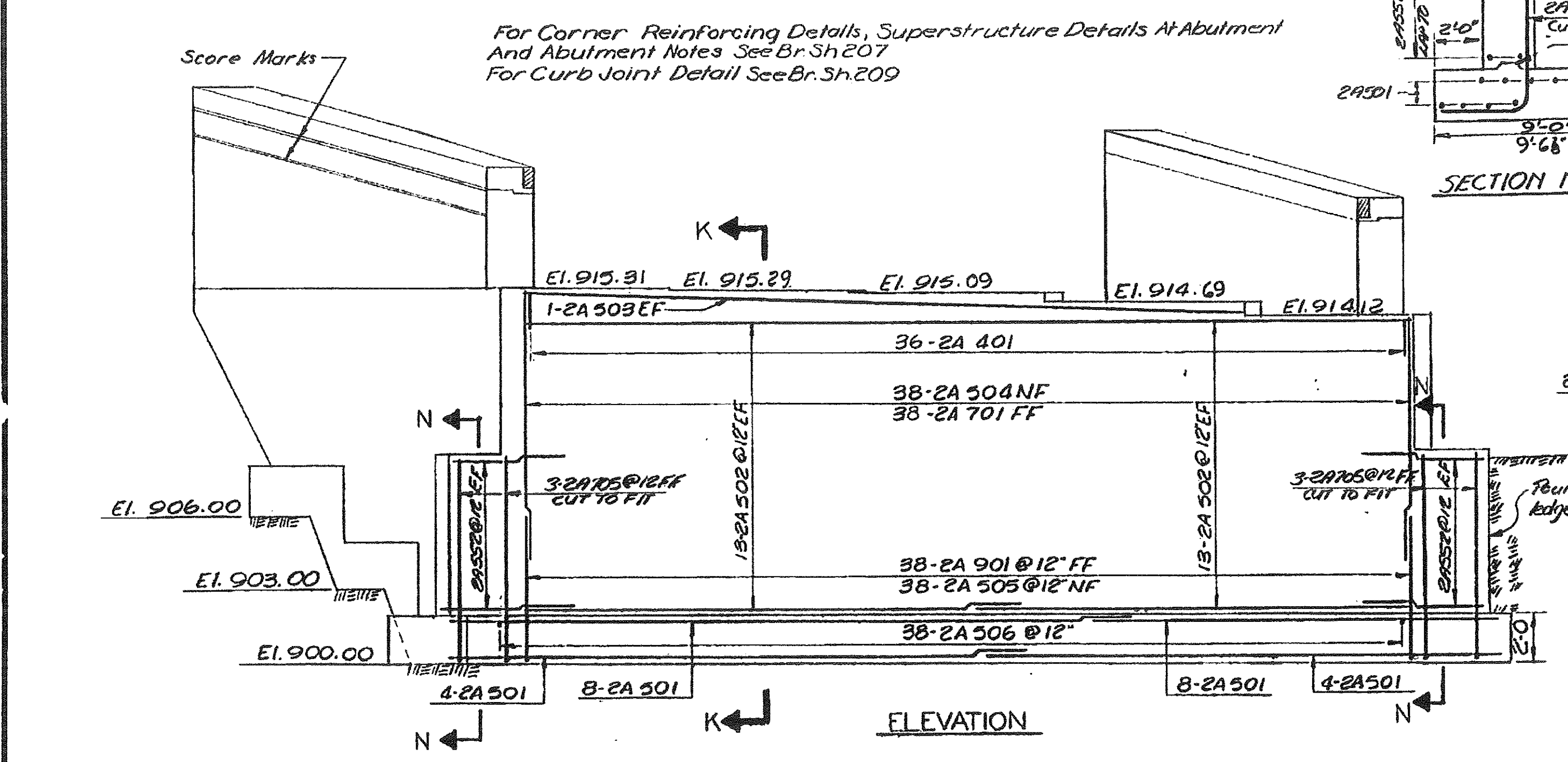
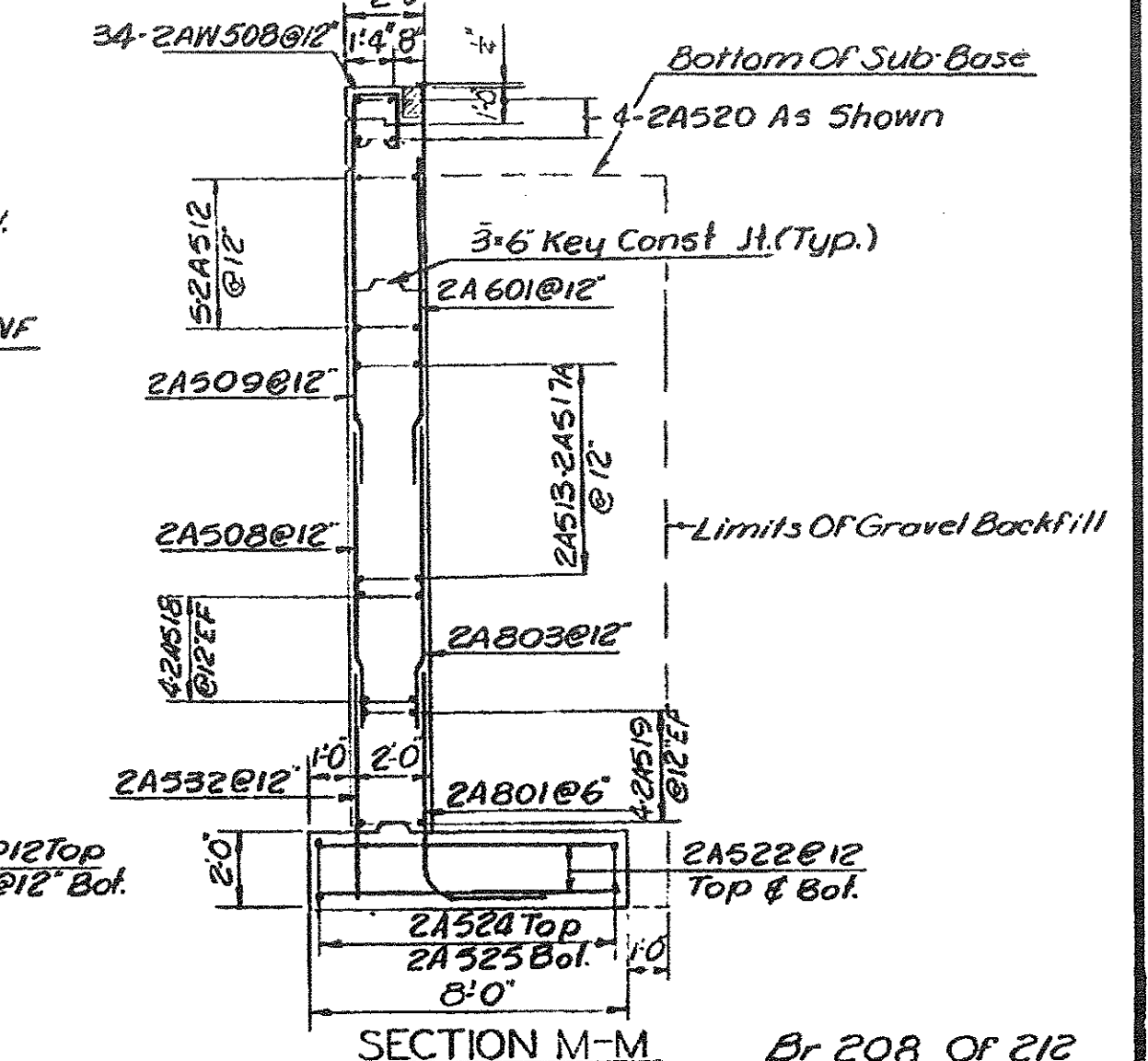
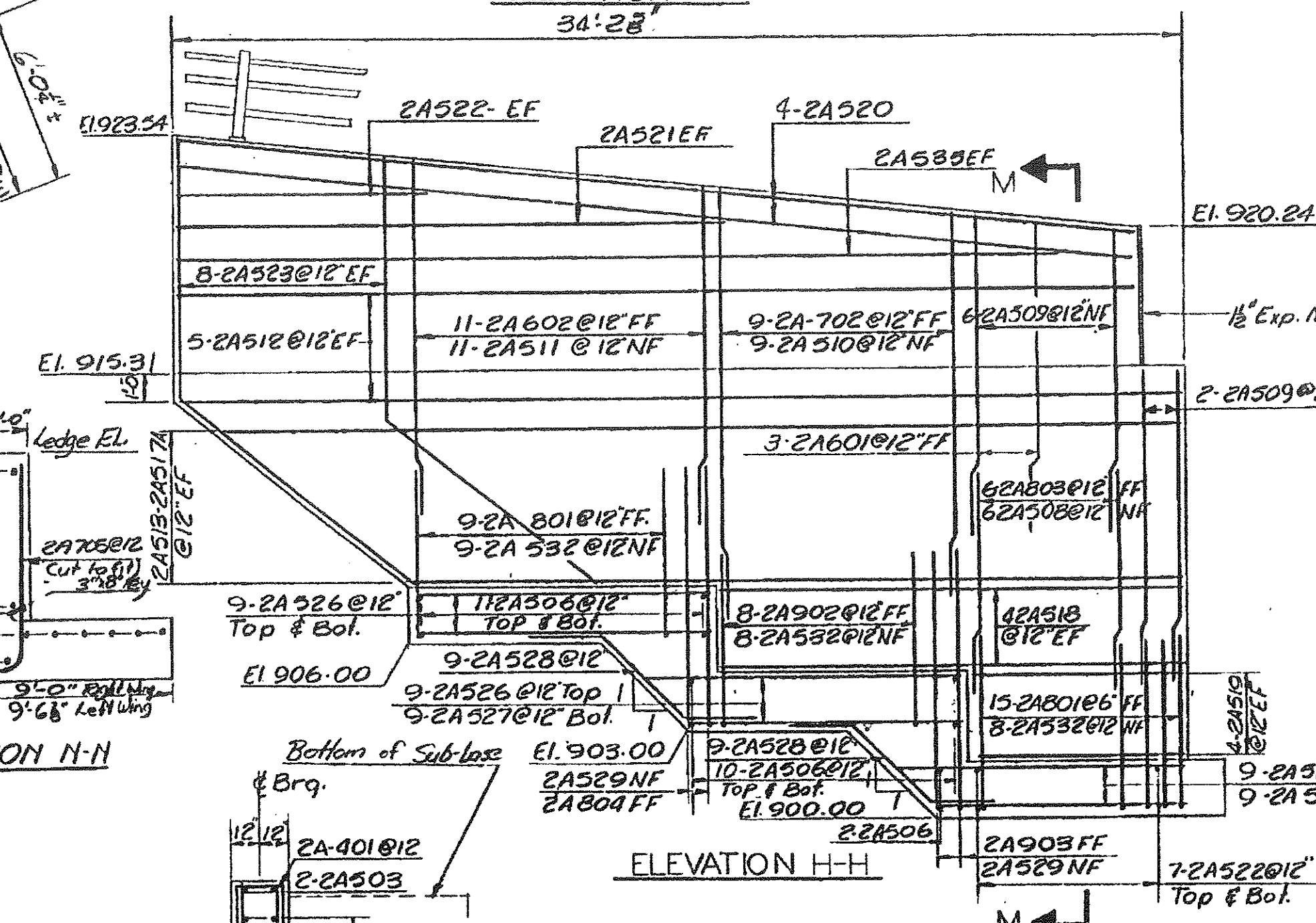
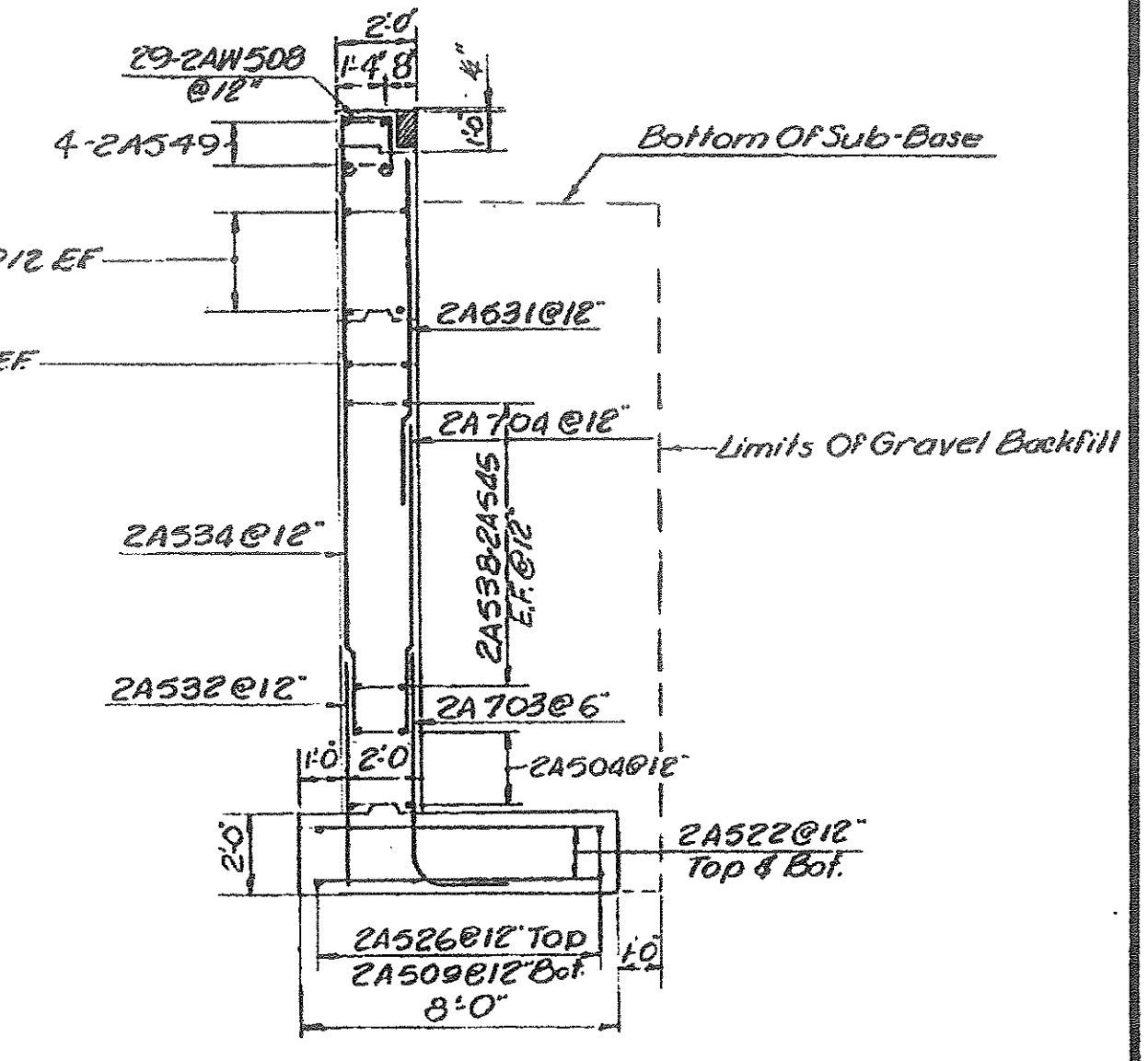
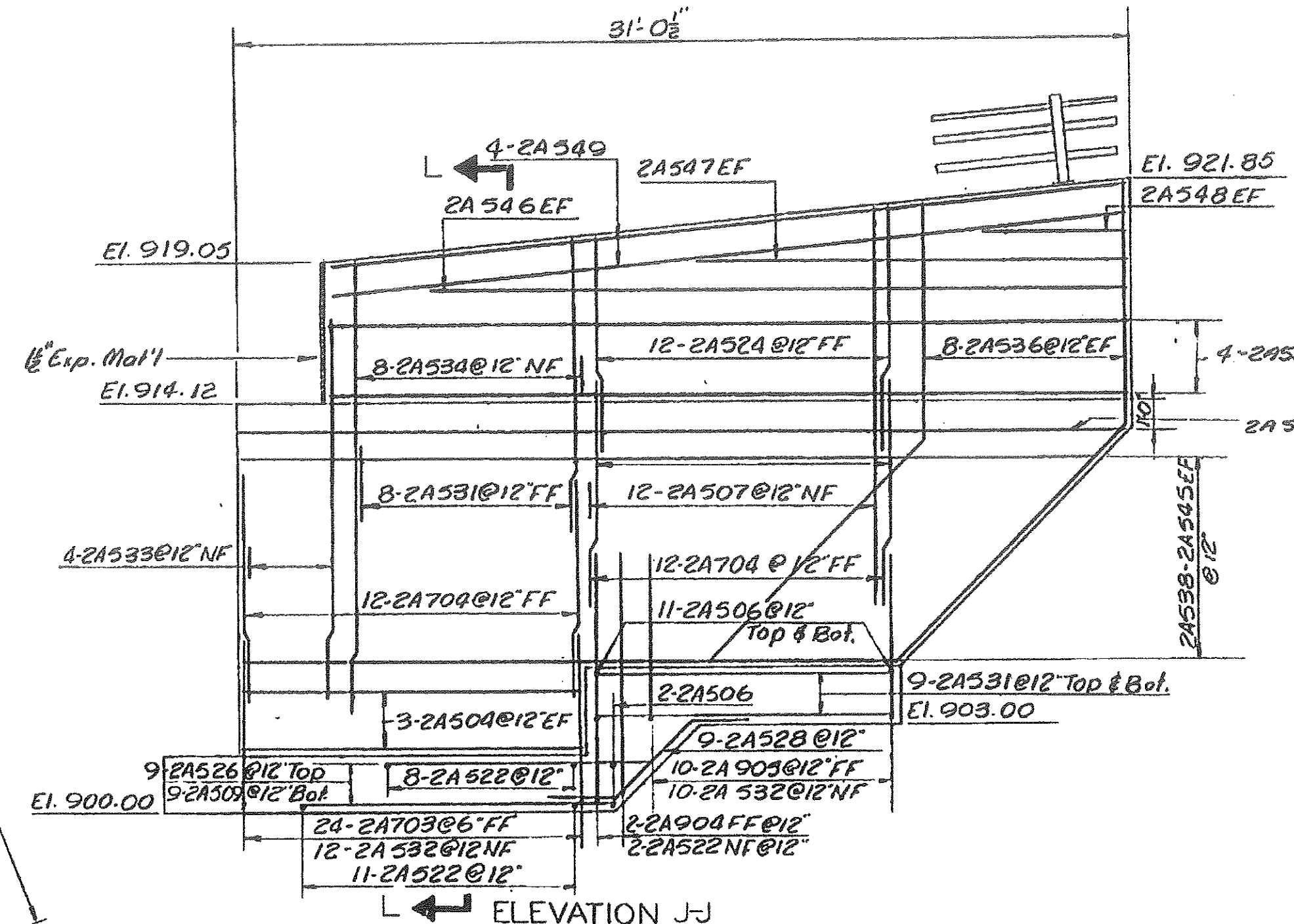
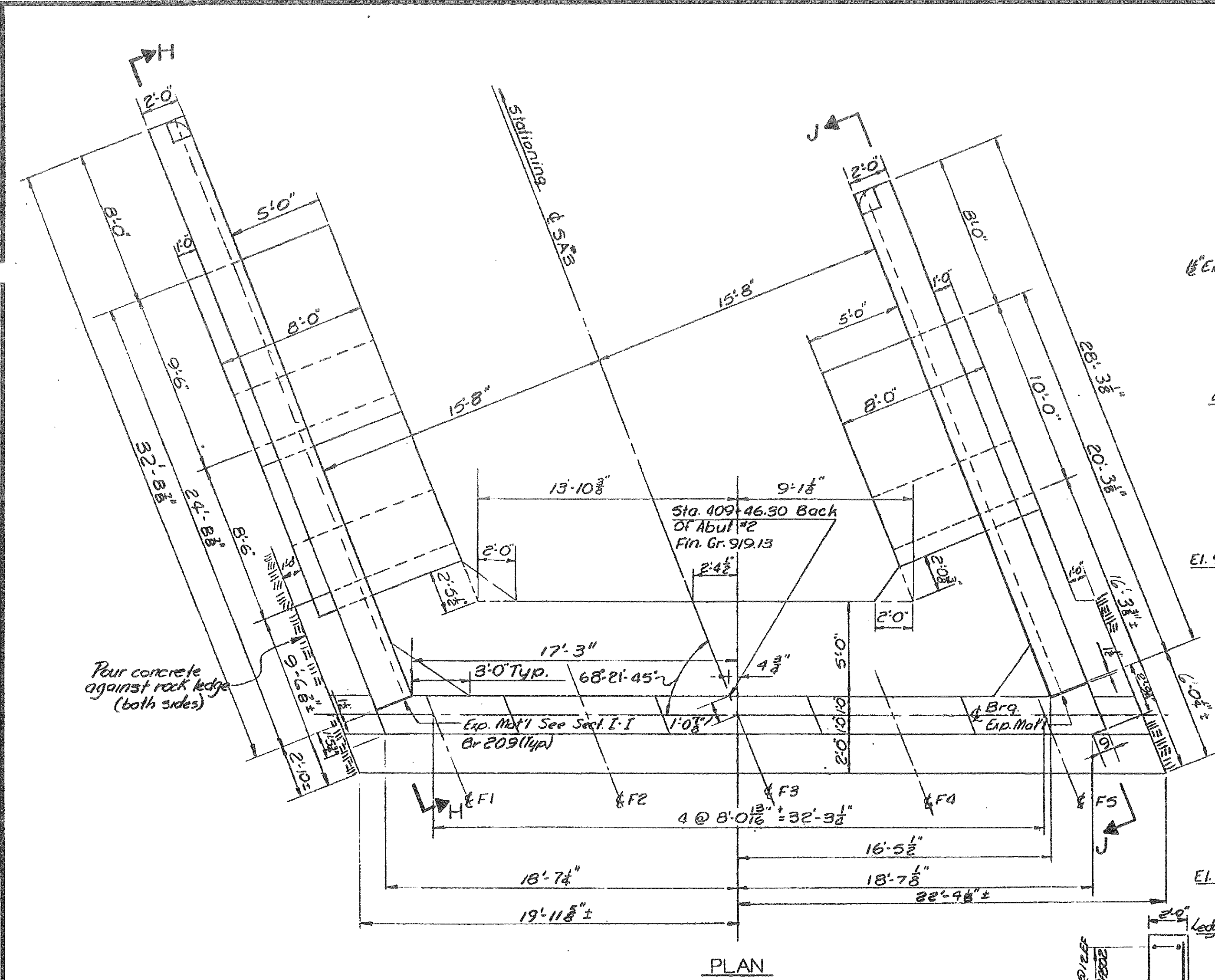


STATEWIDE - N.E. REGION
 BHF MEMB(19)
 SHEET 52 OF 80
 BRIDGE No. D08N & D08S
 FOR REFERENCE ONLY



| ITEM NO. | ITEM | UNIT | NET | TOTAL | FINAL |
|----------|--------------------------|------|-----|-------|-------|
| | CHAN. EXCAV. OF EARTH | C.Y. | | | |
| | CHAN. EXCAV. OF ROCK | C.Y. | | | |
| | UNCLASS. CHAN. EXCAV. | C.Y. | | | |
| | STRUCT. EXCAV. | C.Y. | | | |
| | CONC. CLASS AA (MOD.) | C.Y. | | | |
| | CONC. CLASS B (MOD.) | C.Y. | | | |
| | REINF. STEEL | LBS. | | | |
| | ASPHALTIC-ASB. COATING | S.Y. | | | |
| | TREATED TIMBER PILING | L.F. | | | |
| | SPLICES FOR STEEL PILING | EA. | | | |
| | STEEL PILING | L.F. | | | |
| | UNTREATED TIMBER PILING | L.F. | | | |

STATE OF VERMONT
 DEPARTMENT OF HIGHWAYS

PROJECT IRASBURG-DERBY
 TOWN OF COVENTRY

ROUTE No. I-91 STA. 2083±
SA3 OVER I-91
 ABUTMENT # 2

SCALE 1/4"=1 FT
 IN CHARGE EDWARDS & KELCEY
 DRAWN BY D.LEE CHECKED BY ACENTORE
 PROJECT No. I 91-3(8) 4-66
 SHEET 207 OF 605 BR 208

Some changes as per 207 Closure wall added to both sides. R.Tech 7/19