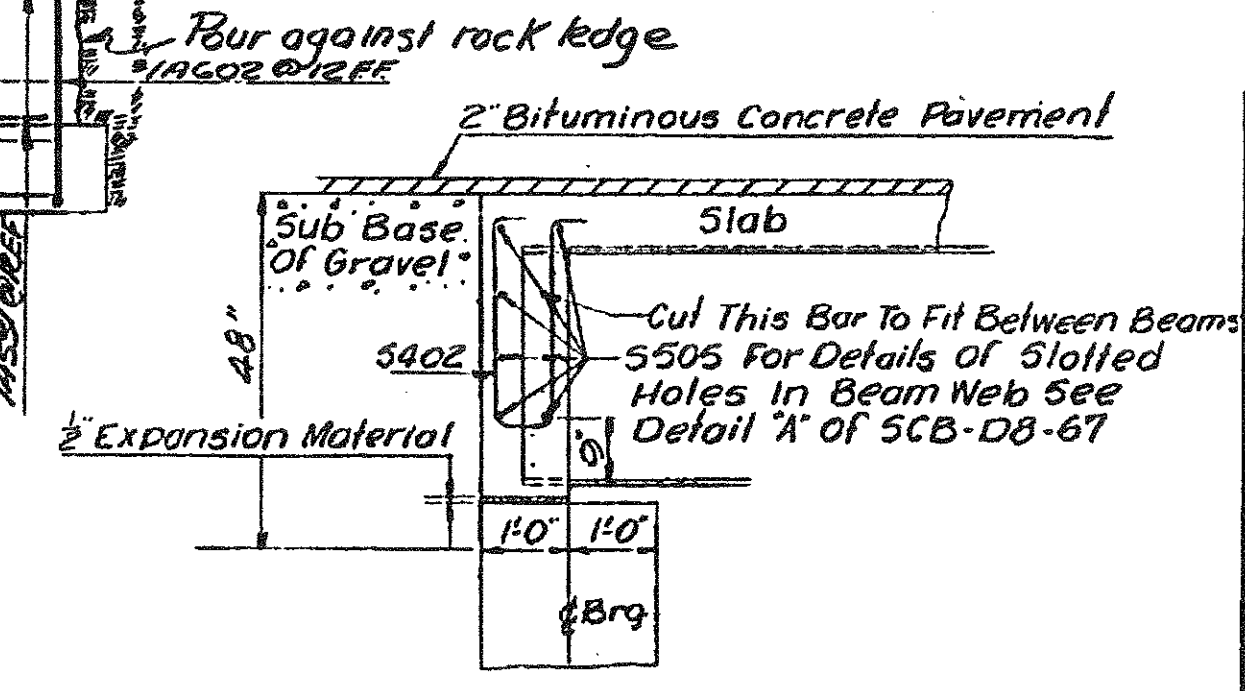
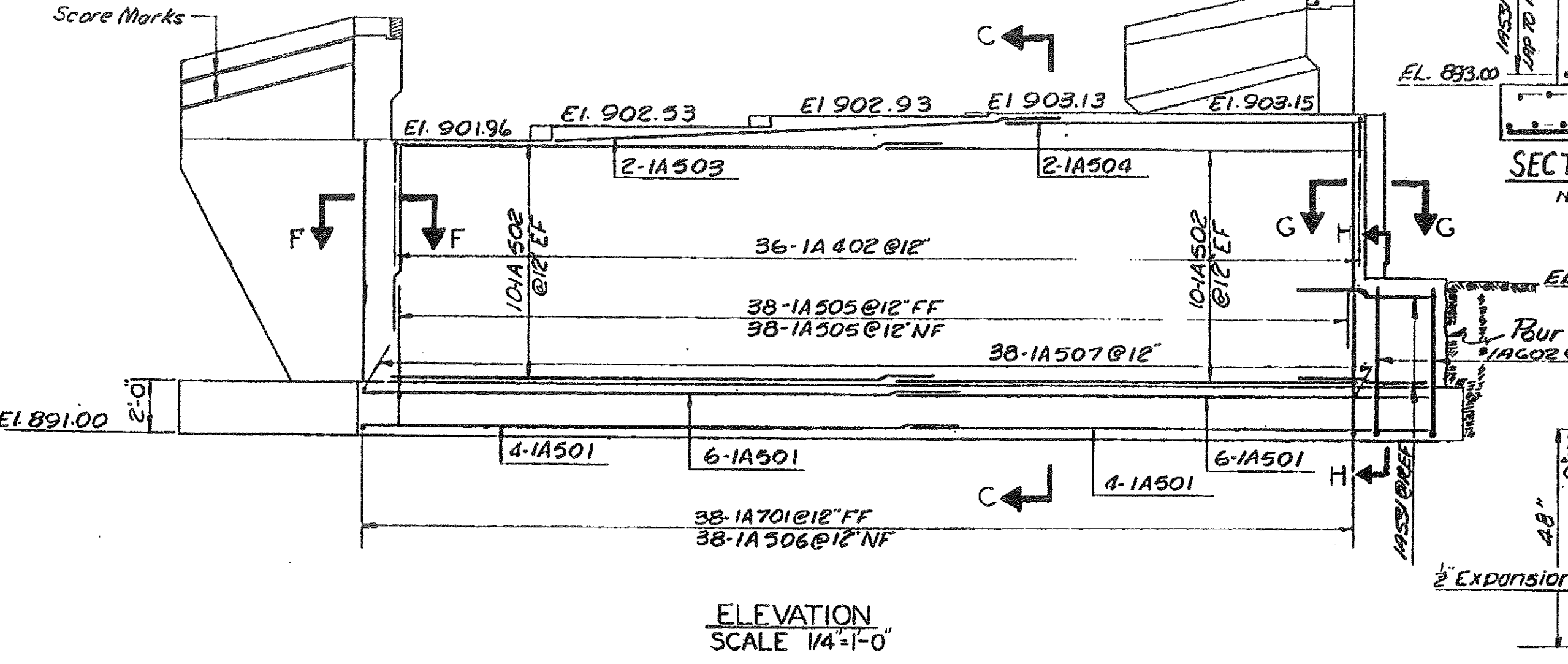


- Abutment Notes**
- For Additional Curb And Construction Joint Details See STD SH. SCB-D6-67 Detail 'A' And 'B'
 - No Concrete In Wings Is To Be Placed Above Adjacent Bridge Seal Elevations Until Frames Have Been Profiled And Final Finish Grade Determined By The Engineer.
 - Step Bridge Seats Midway Between Bearing Devices.
 - All Reinforcing To Have Minimum Cover Of 2" Except 3" In Footing
 - Footing Are Designed For Bearing Of 5 Tons/Sq. Ft. On Ledge.
 - All Ledge Under The Footing Shall Be Roughened Such That No Ledge Projects Above The Bottom Of Footing Elevation Indicated On The Plans.
 - The Footings Are To Be Placed On Sound Ledge.
 - For Details Of Curved Granite End Blocks See STD. SH. SCB-D4-67.
 - Four (4) Inch Diameter Weep Holes Shall Be Provided In All Abutments, Wings, And Walls. Weep Holes Shall Be Spaced Not Over Ten (10) Feet Center To Center And So Placed To Provide Adequate Drainage For Back Fill.
 - Closure Walls Shall Be Rued Against Rock Ledge. Elevation Of Top Of Wall Shall Be Approximately That of Ledge.



ITEM NO.	ITEM	UNIT	NET	TOTAL	FINAL
	CHAN. EXCAV. OF EARTH	C.Y.			
	CHAN. EXCAV. OF ROCK	C.Y.			
	UNCLASS. CHAN. EXCAV.	C.Y.			
	STRUCT. EXCAV.	C.Y.			
	CONC. CLASS AA (MOD.)	C.Y.			
	CONC. CLASS B (MOD.)	C.Y.			
	REINF. STEEL	LBS.			
	ASPHALTIC-ASB. COATING	S.Y.			
	TREATED TIMBER PILING	L.F.			
	SPLICES FOR STEEL PILING	EA.			
	STEEL PILING	L.F.			
	UNTREATED TIMBER PILING	L.F.			

Changed Roadway Width from 30'-0" to 31'-4"; Curb Width from 2'-8" to 2'-0"
 Removed Closure Walls. Added Closure Wall
 Change Reinf. Steel Accordingly. Lowered Bridge Seal Elevations 1/2". (8/28/99)

STATE OF VERMONT
 DEPARTMENT OF HIGHWAYS

PROJECT FRASBURG-DERBY
 TOWN OF COVENTRY

ROUTE No. I-91 STA. 2683±
SA 3 OVER I-91

ABUTMENT #1
 SCALE AS NOTED
 IN CHARGE EDWARDS & KELCEY

DRAWN BY DL EE CHECKED BY ACENTORE
 PROJECT No. 1913(8)
 SHEET 206 OF 605 BR 207