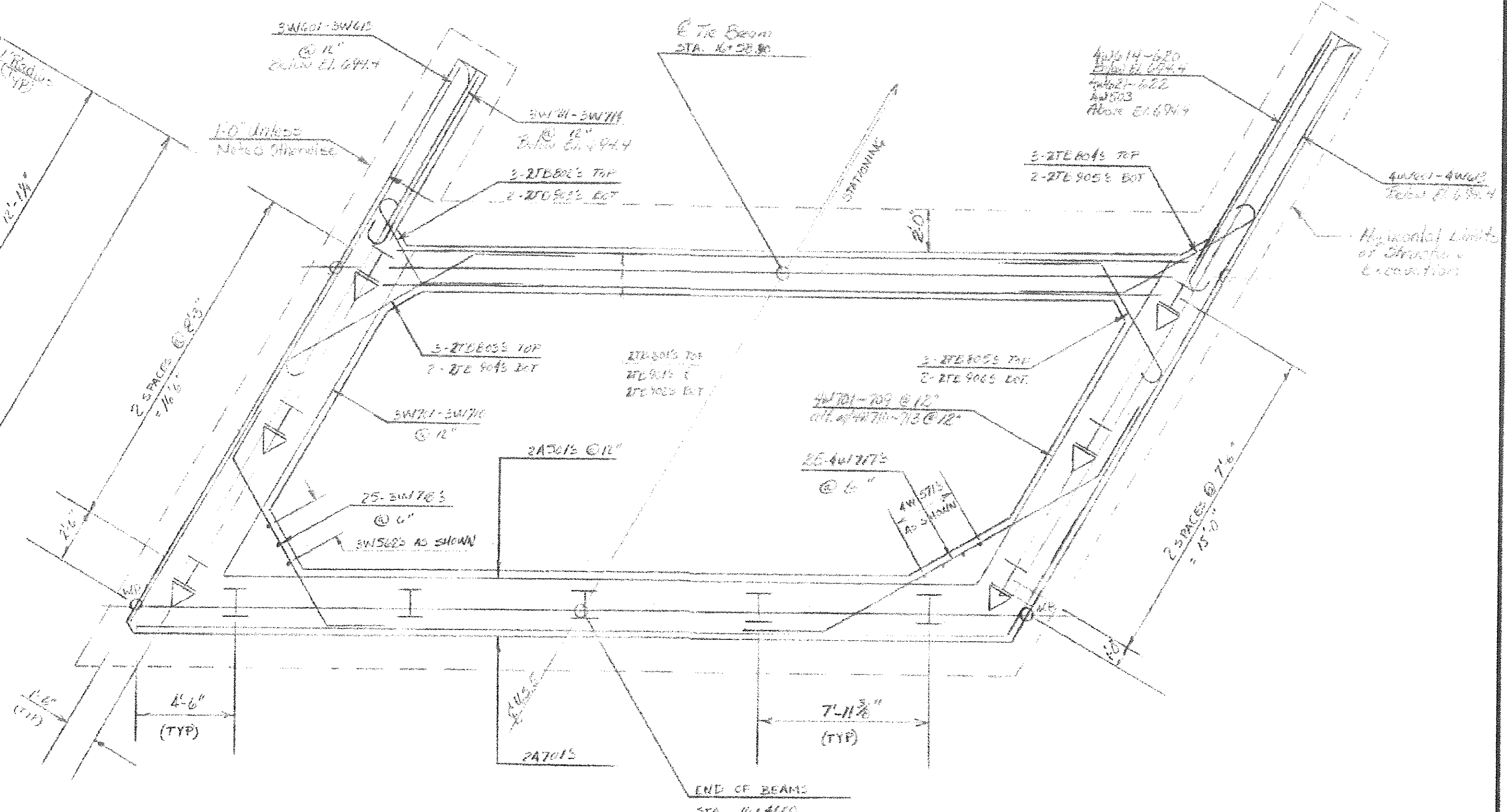


ABUT #2 - PLAN
SCALE: 1/4" = 1'-0"

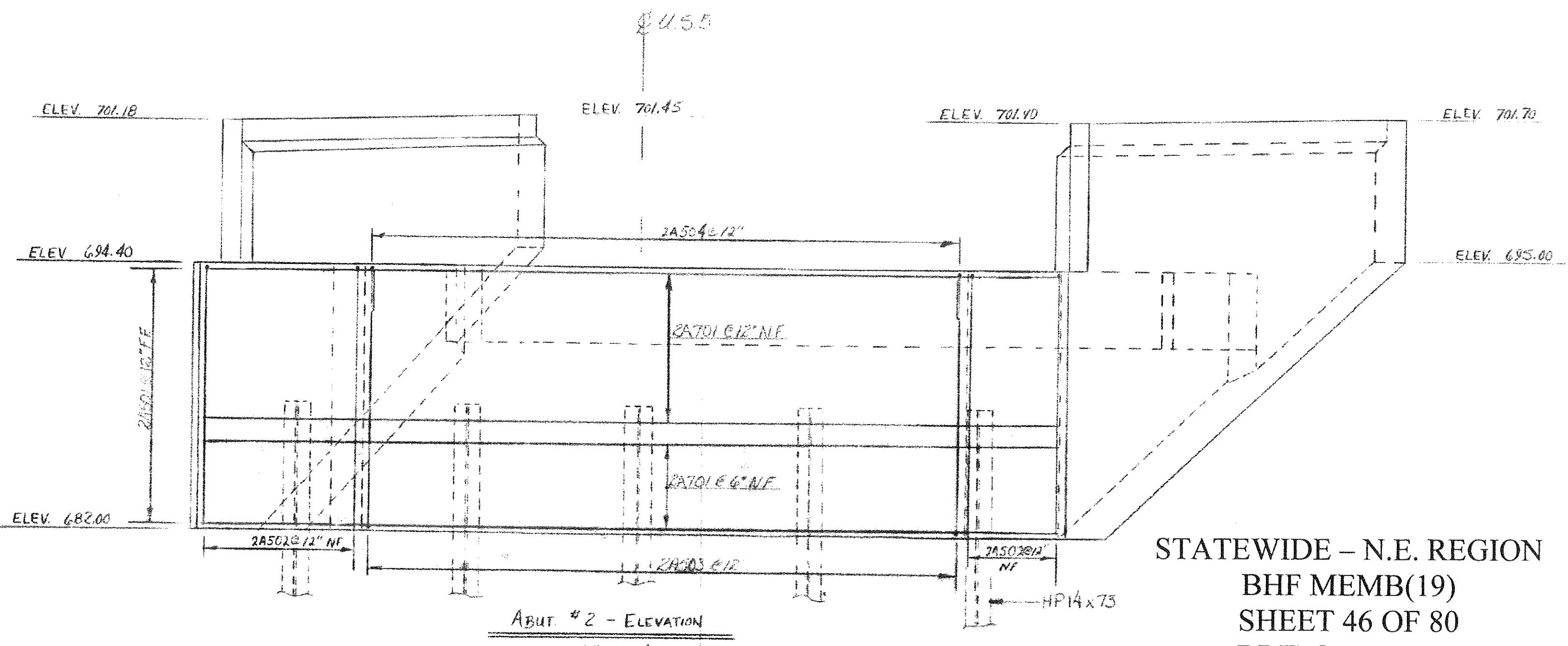


FILE LAYOUT
SCALE: 1/4" = 1'-0"

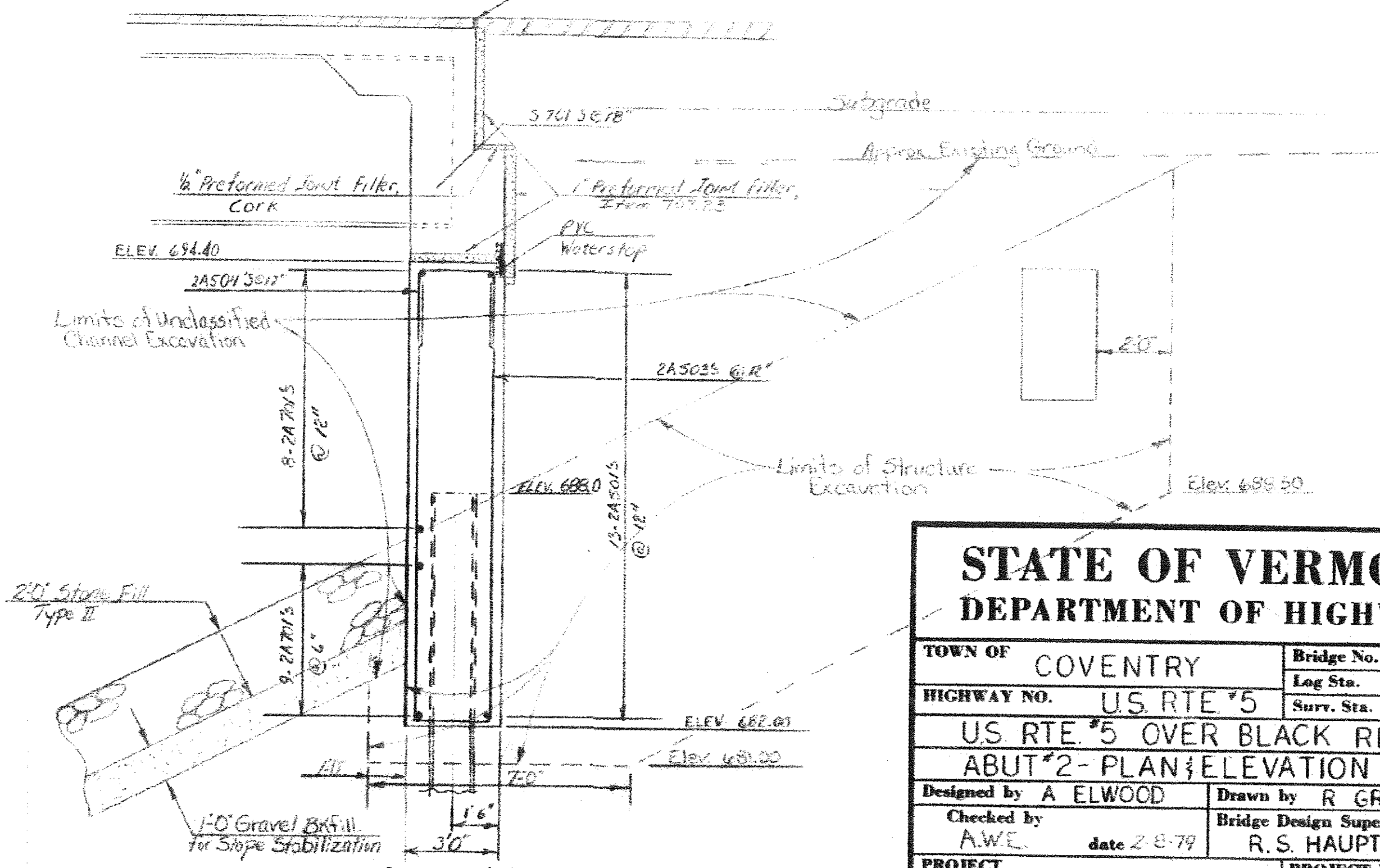
N.B.: Rebar locations are indicated at top of file elevations. Final locations of all rebar may vary from those shown.

NOTES

1. For RE BEAM DETAILS SEE BRIDGE SHEET 46-110.
2. Notes for Abutment No. 1, BR 108, shall apply to Abut. No. 2.



ABUT #2 - ELEVATION
SCALE: 1/4" = 1'-0"



SECTION A-A
SCALE: 3/8" = 1'-0"

STATEWIDE - N.E. REGION
BHF MEMB(19)
SHEET 46 OF 80
BRIDGE No. 174
FOR REFERENCE ONLY

STATE OF VERMONT DEPARTMENT OF HIGHWAYS	
TOWN OF COVENTRY	Bridge No. 174
HIGHWAY NO. U.S. RTE #5	Log Sta.
US RTE #5 OVER BLACK RIVER ABUT #2 - PLAN & ELEVATION	
Designed by A. ELWOOD	Drawn by R. GRAY
Checked by A.W.C. date 2-8-79	Bridge Design Supervisor R.S. HAUPT date
PROJECT COVENTRY	PROJECT NO. BRS 0113(2)
Bridge Sheet No. 111	Sheet 20 of 58