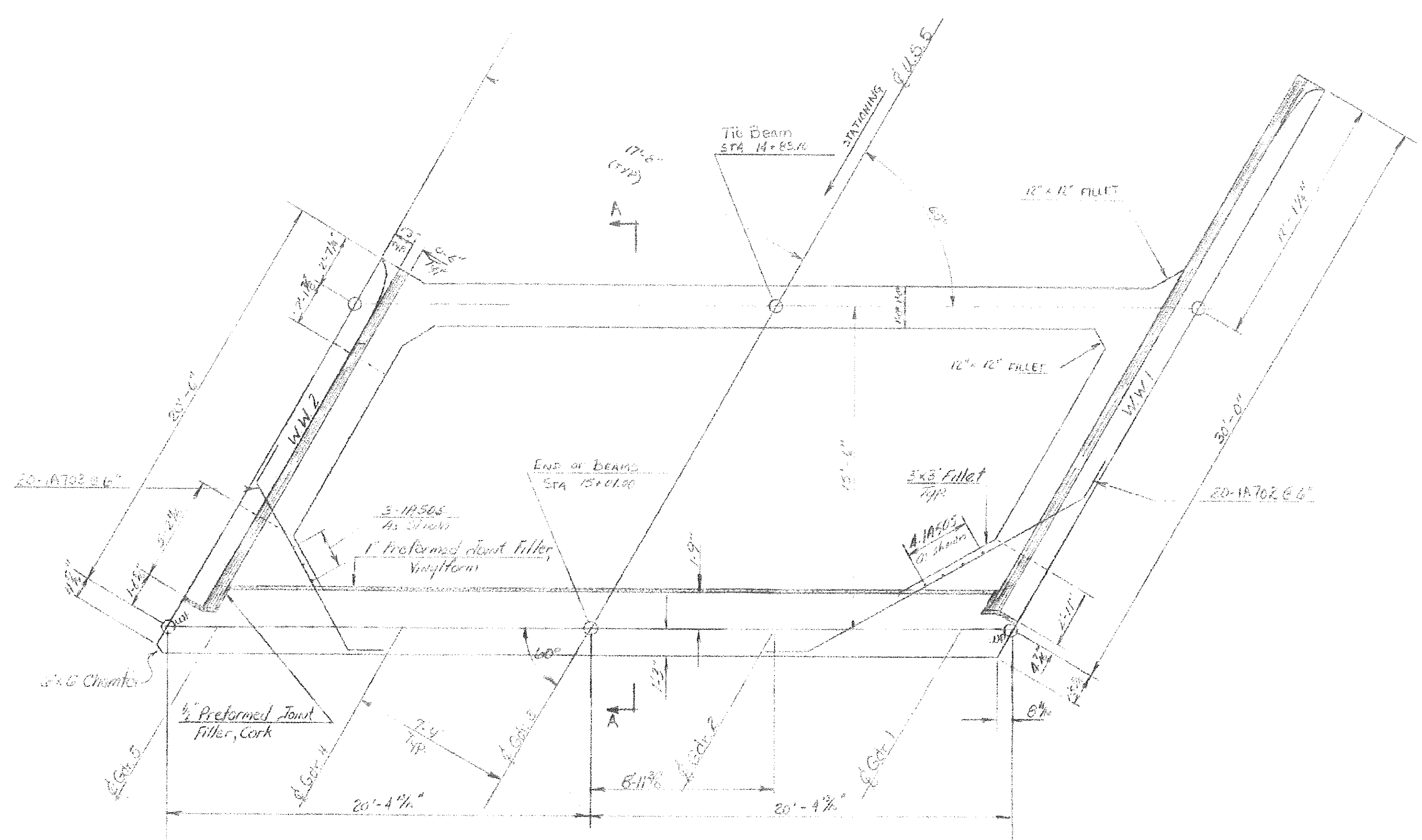
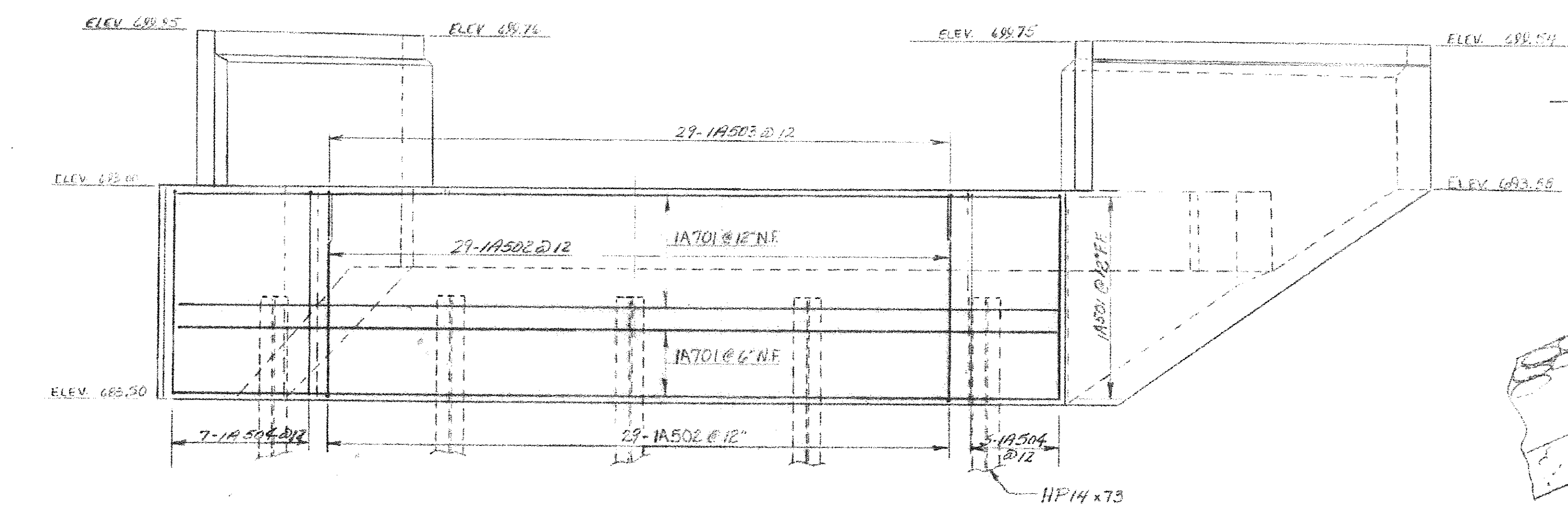


STATEWIDE - N.E. REGION
 BHF MEMB(19)
 SHEET 43 OF 80
 BRIDGE No. 174
 FOR REFERENCE ONLY

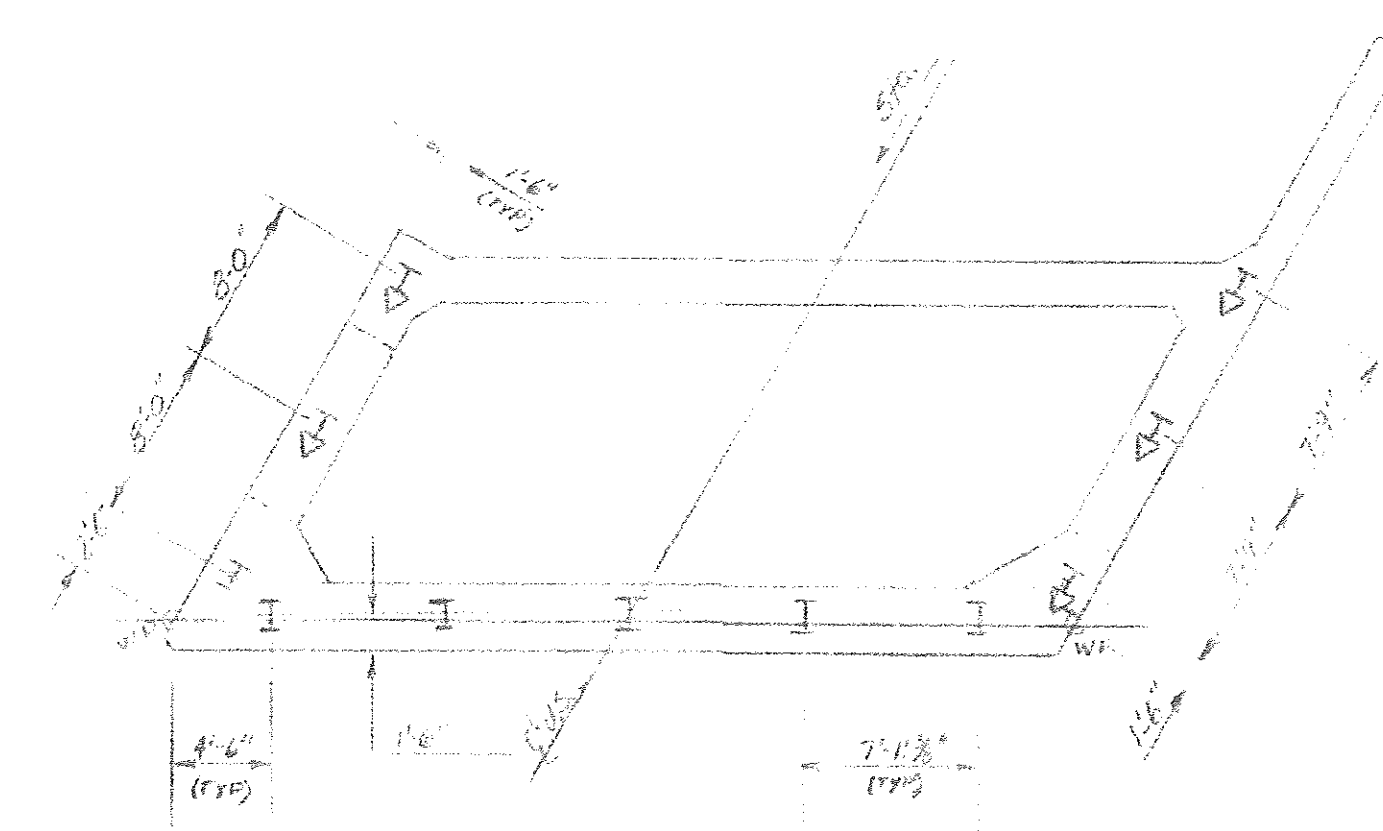


PLAN
 SCALE: 1/8" = 1'

FLOW
 ← U.S.E.

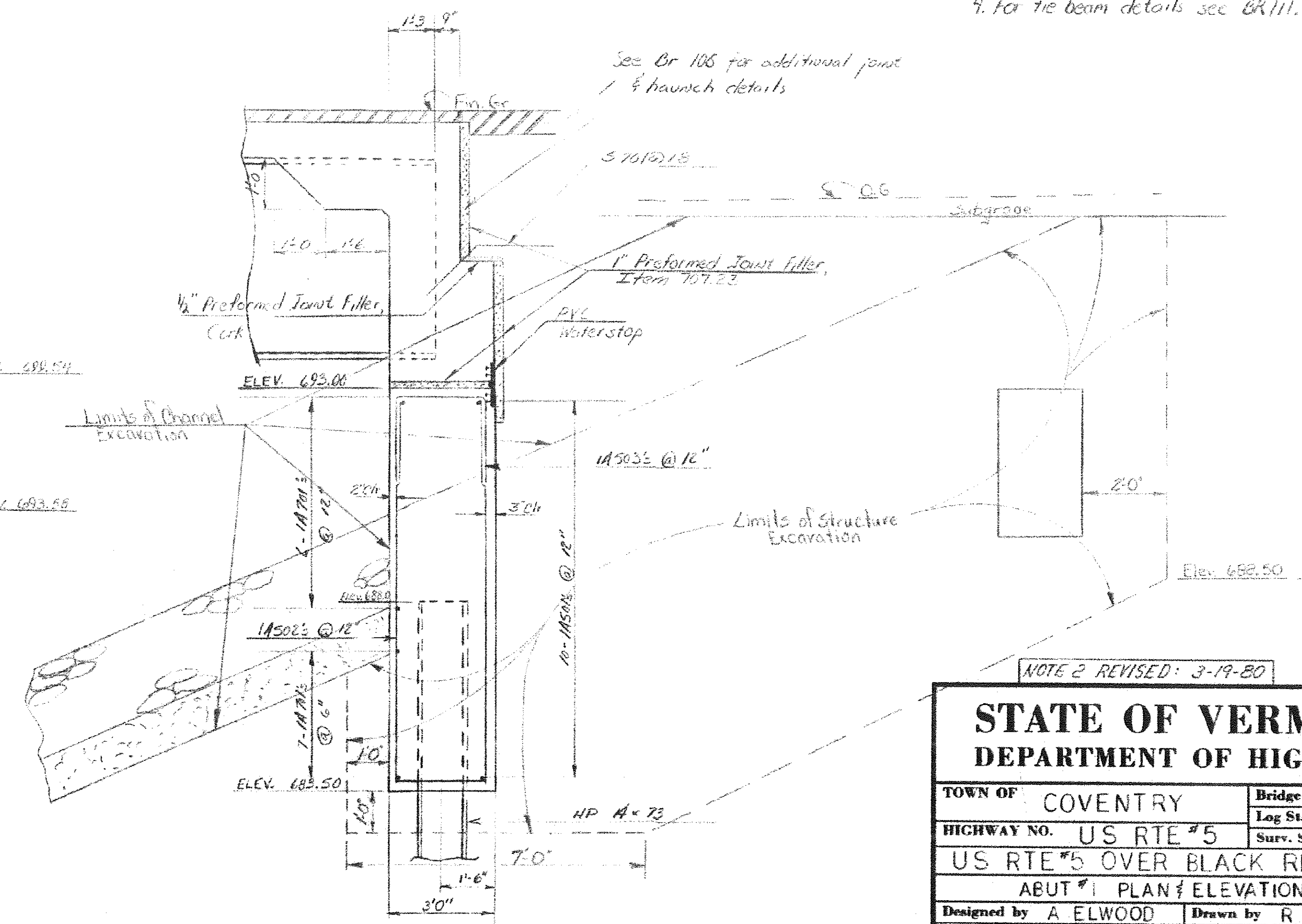


ELEVATION
 SCALE: 1/4" = 1'-0"



PILE LAYOUT
 SCALE: 1/8" = 1'

Note: Pile locations are shown at top of pile elevations. These locations shall not vary by more than 1/2" from what grouping.



SECTION A-A
 SCALE: 1/2" = 1'-0"

NOTES

- All concrete in the abutment shall be concrete C1 "B".
- All abutment HP 14x73 piles shall be a minimum of 60 feet in length unless refusal is encountered first. The minimum load carrying capacity of the piles is 60 tons. No pile splices shall be allowed between the bottom of the stem or wing wall elevations and a depth of 15'-0" below this elevation.
- The Preformed Joint Filler shall meet the requirements of subsection 707.23 and be included in the unit bid price for concrete class "A".
- For tie beam details see BR111.

See Br 108 for additional joint & haunch details

NOTE 2 REVISED: 3-19-80

STATE OF VERMONT DEPARTMENT OF HIGHWAYS	
TOWN OF: COVENTRY	Bridge No. 174
HIGHWAY NO. US RTE #5	Log Sta.
US RTE #5 OVER BLACK RIVER	
ABUT #1 PLAN & ELEVATION	
Designed by A ELWOOD	Drawn by R GRAY
Checked by AWE date 2-79	Bridge Design Supervisor RS HAUPT date
PROJECT COVENTRY	PROJECT NO. BRS 0113(2)
Bridge Sheet No. 108	Sheet 17 of 58