

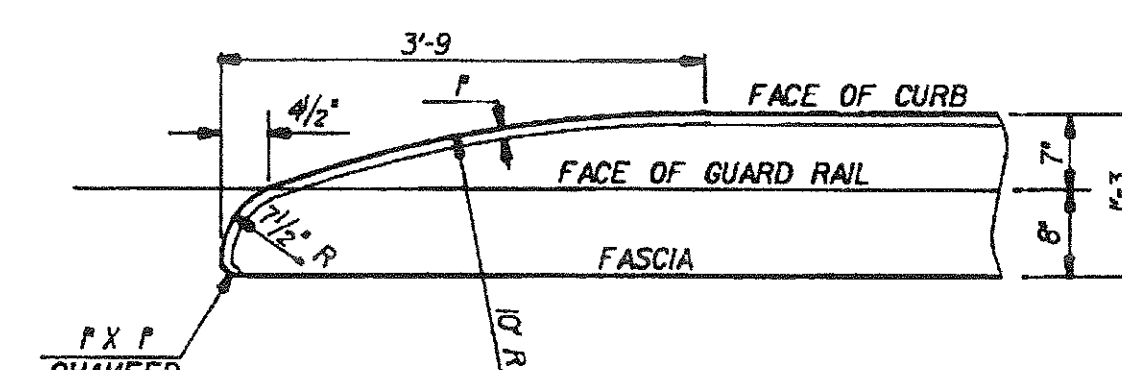
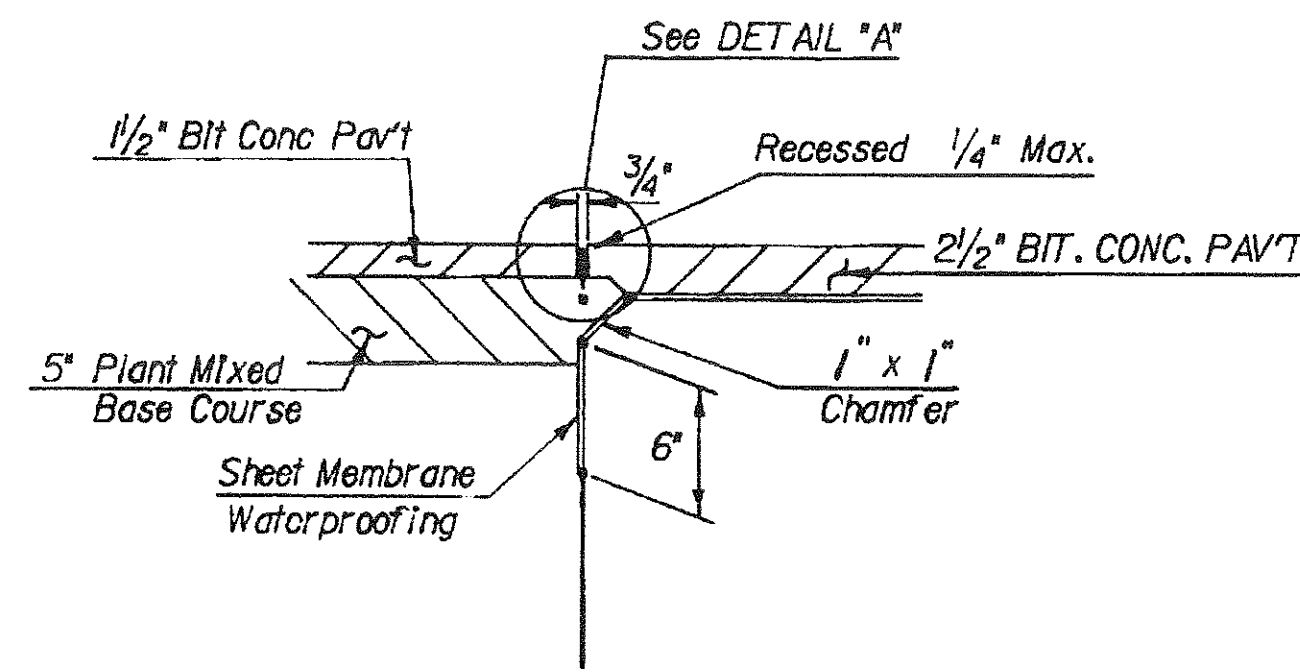
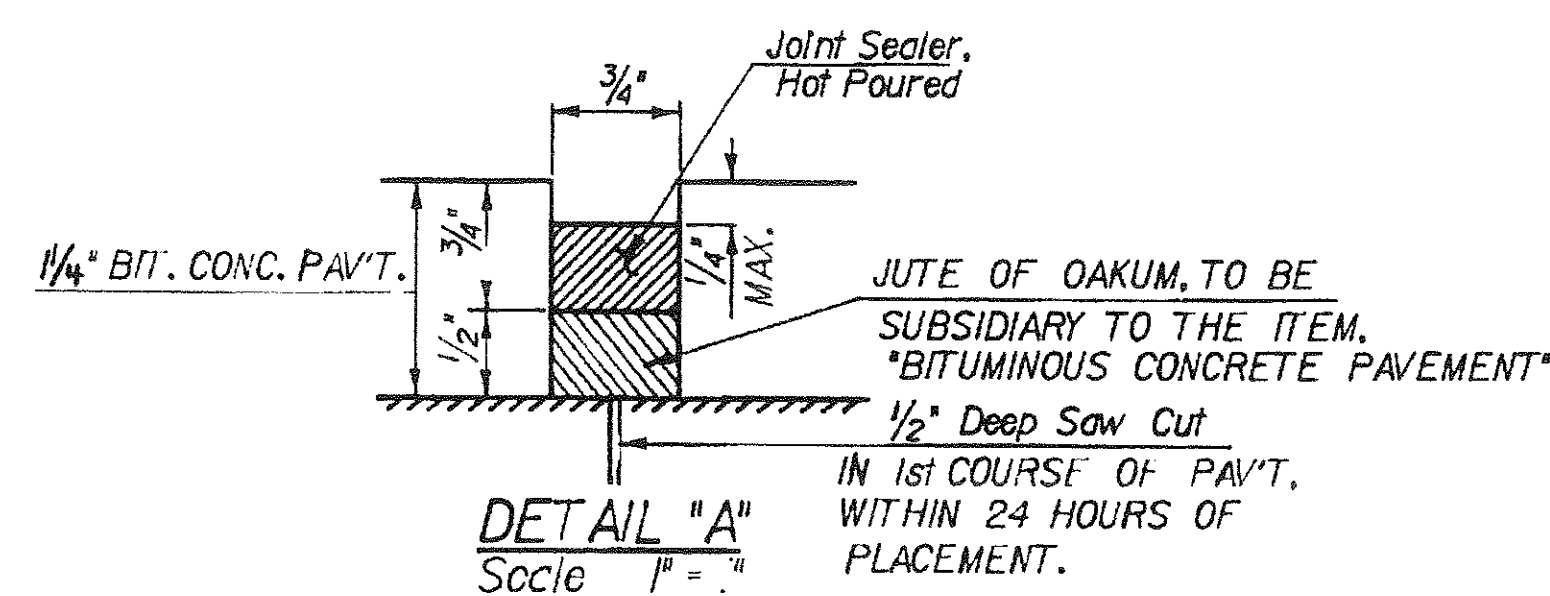
NOTES

1. ALL STRUCTURAL STEEL SHALL BE A588 UNPAINTED, UNLESS NOTED.
2. BEAM ENDS SHALL BE CUT SO THEY ARE VERTICAL IN THEIR FINAL POSITION.
3. BEAMS SHALL BE CAMBERED 2". CAMBER SHALL APPROXIMATE A CIRCULAR CURVE.
4. BITUMINOUS CONCRETE PAVEMENT ON BRIDGE SHALL BE PLACED IN TWO LIFTS OF 1/4" EACH. THE FIRST LIFT SHALL BE TYPE IV MIX AND THE SECOND LIFT SHALL BE TYPE III MIX.

STATEWIDE - N.E. REGION  
BHF MEMB(19)  
SHEET 34 OF 80  
BRIDGE No. 1  
FOR REFERENCE ONLY

STATE OF VERMONT  
AGENCY OF TRANSPORTATION

Town Of <b>BURKE</b>	Bridge No. <b>1</b>
Highway No. <b>VT. RTE. 5A</b>	Log Sta. <b>Surv. Sta. 111+315</b>
<b>VT. RTE. 5A OVER SUTTON RIVER</b>	
<b>FRAMING PLAN, BEAM ELEVATION, END DETAIL</b>	
Designed By <b>J.B. MCCARTHY</b>	Drawn By <b>G. SCHELLEY</b>
Checked By <b>J.B. MCCARTHY</b> Date <b>6/85</b>	Bridge Design Supervisor <b>E.L. Colley</b> Date <b>6-85</b>
PROJECT <b>BURKE</b>	PROJECT NO. <b>BRS 02871315</b>
I.G.C. Info. <b>USA 30.33178F191SUP.DGN</b>	
Bridge Sheet No. <b>BR106</b>	Sheet <b>22</b> of <b>81</b>



NOTE: See STD DWG SCB - D9 - 71, Detail B, for additional details, except as noted.