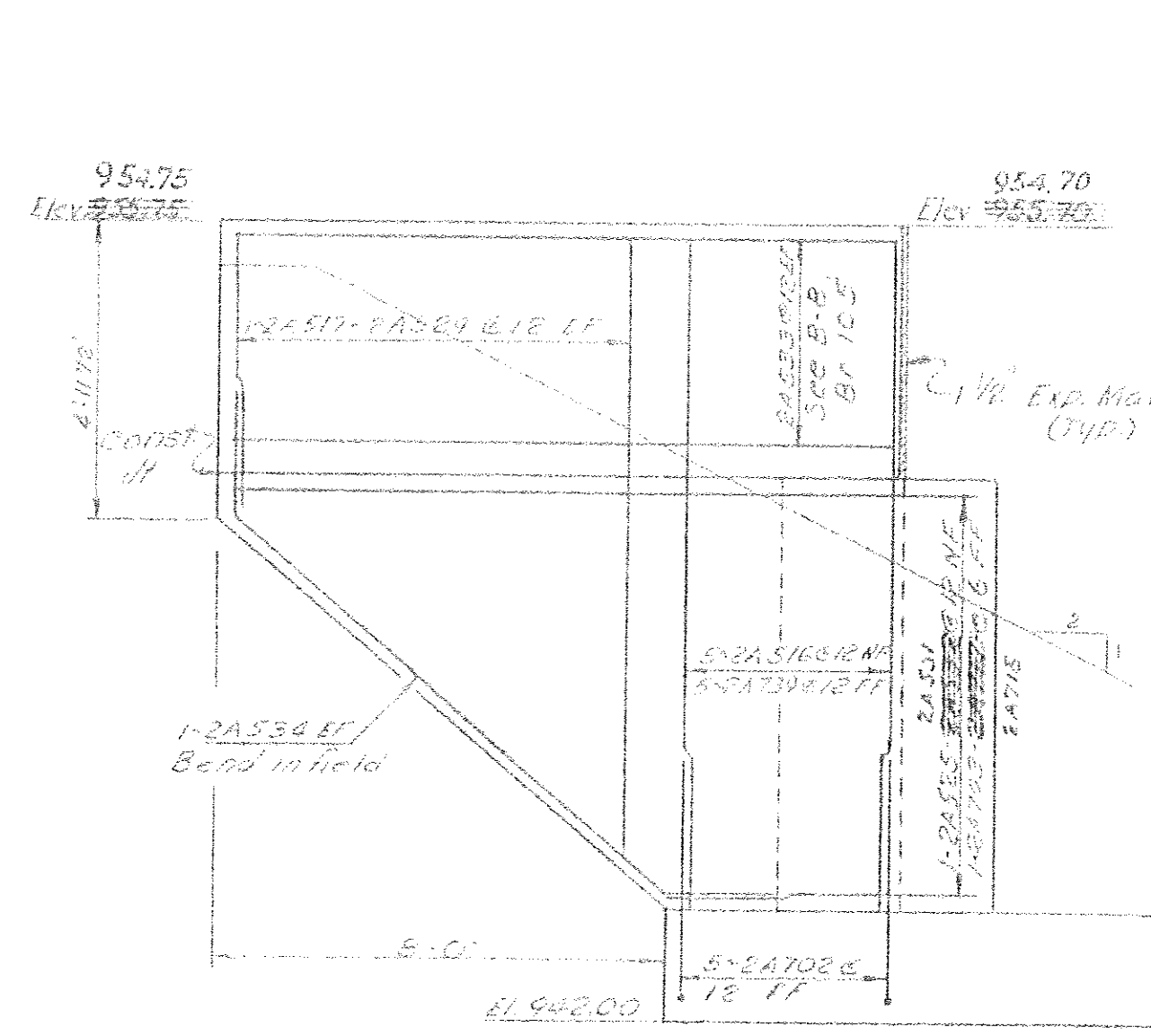
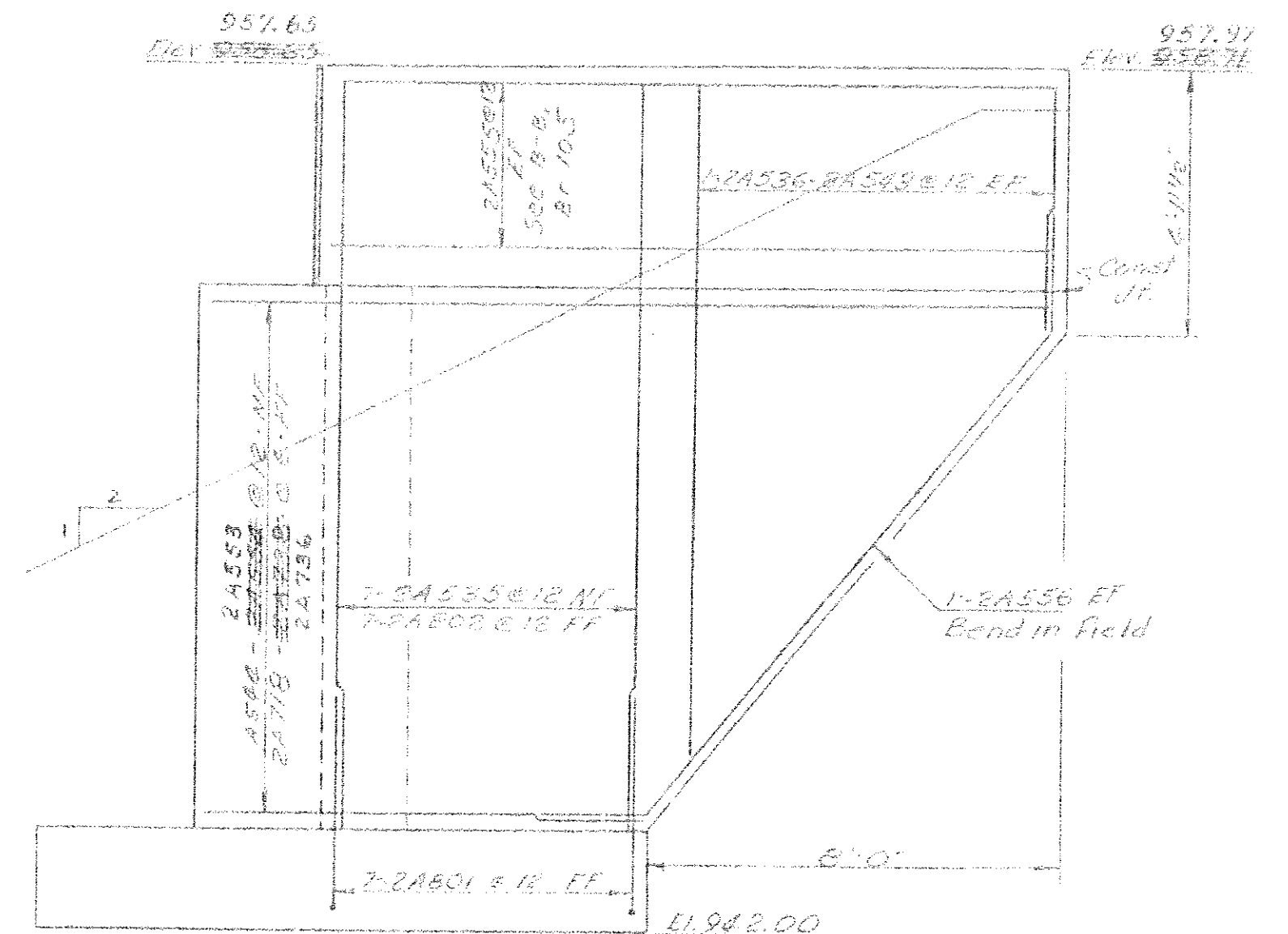


PLAN
1/4"=1'-0"

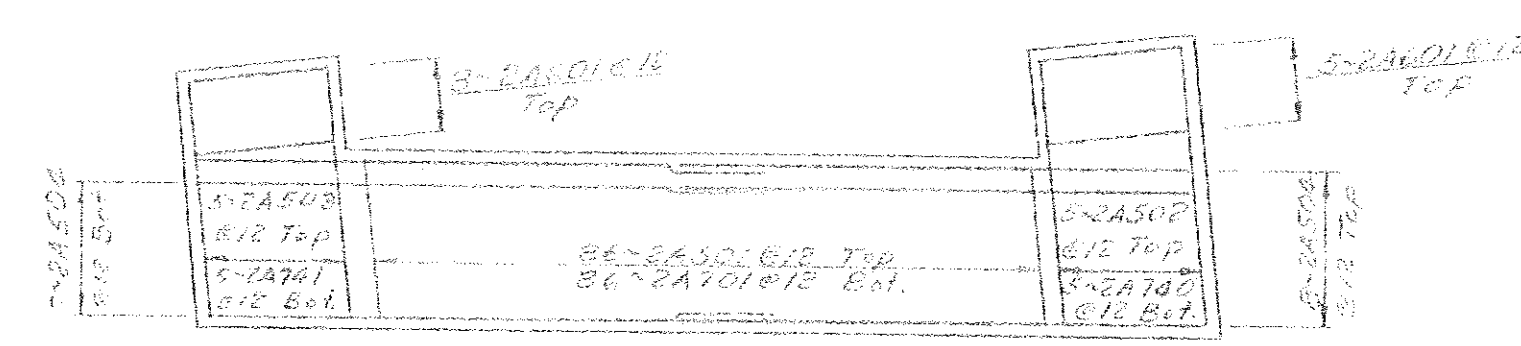


SECTION C-C
3/8"=1'-0"

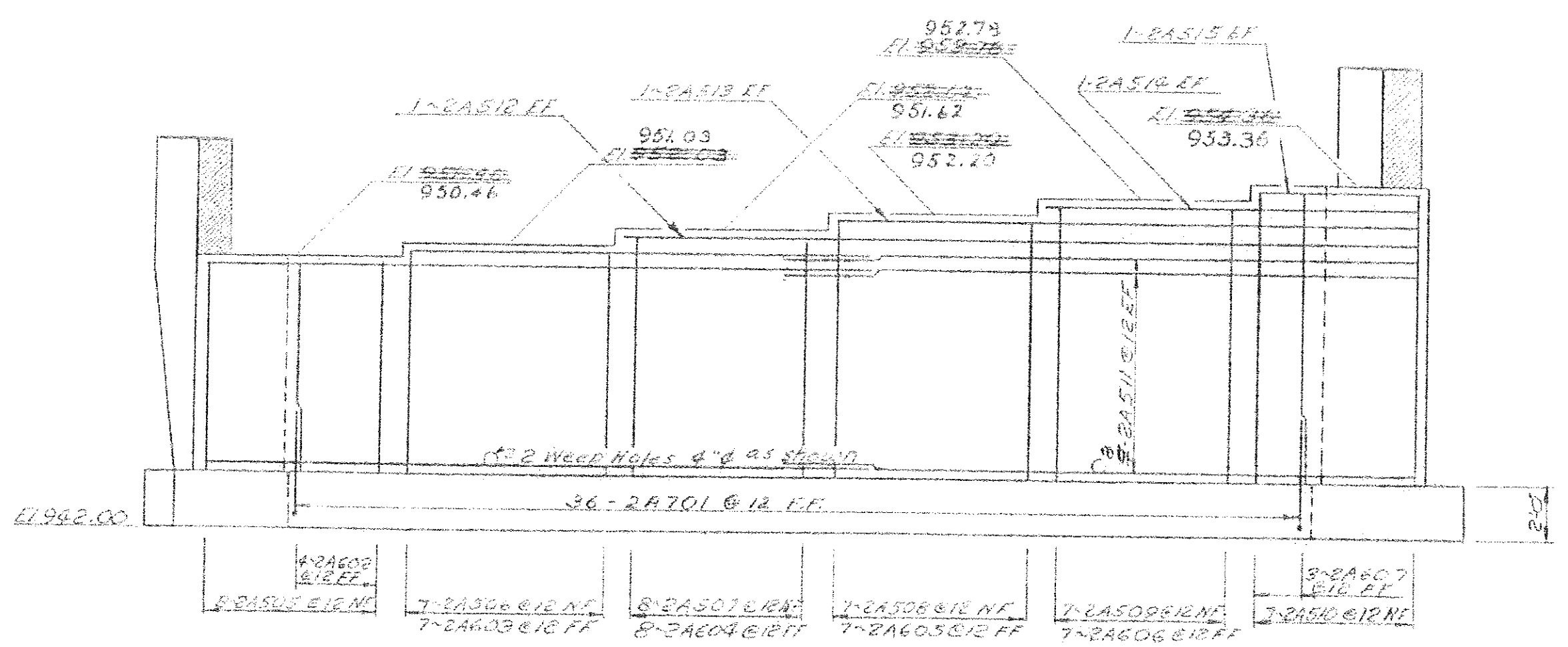


SECTION D-D
3/8"=1'-0"

~ For Section A-A & B-B see sheet BR 105.
~ For notes see sheet BR 105.



PLAN OF FOOTING REINFORCING STEEL
NFS



ELEVATION
1/4"=1'-0"

STATEWIDE - N.E. REGION
BHF MEMB(19)
SHEET 29 OF 80
BRIDGE No. 97
FOR REFERENCE ONLY

STATE OF VERMONT	
DEPARTMENT OF HIGHWAYS	
PROJECT	BLOOMFIELD
TOWN OF	BLOOMFIELD
ROUTE NO.	VT 105 Brg. CIV. 130-5.5
VT 105 OVER EAST BRANCH NULHEGAN RIVER	
ABUTMENT #2 DETAILS	
SCALE	AS NOTED
SECTION SUPERVISOR	R.L. MERCHANT
DRAWN BY	COBRYAN
CHECKED BY	G. TICKES
PROJECT NO.	BB 034-3-6690
SHEET NO.	25 OF 30
	BB 106