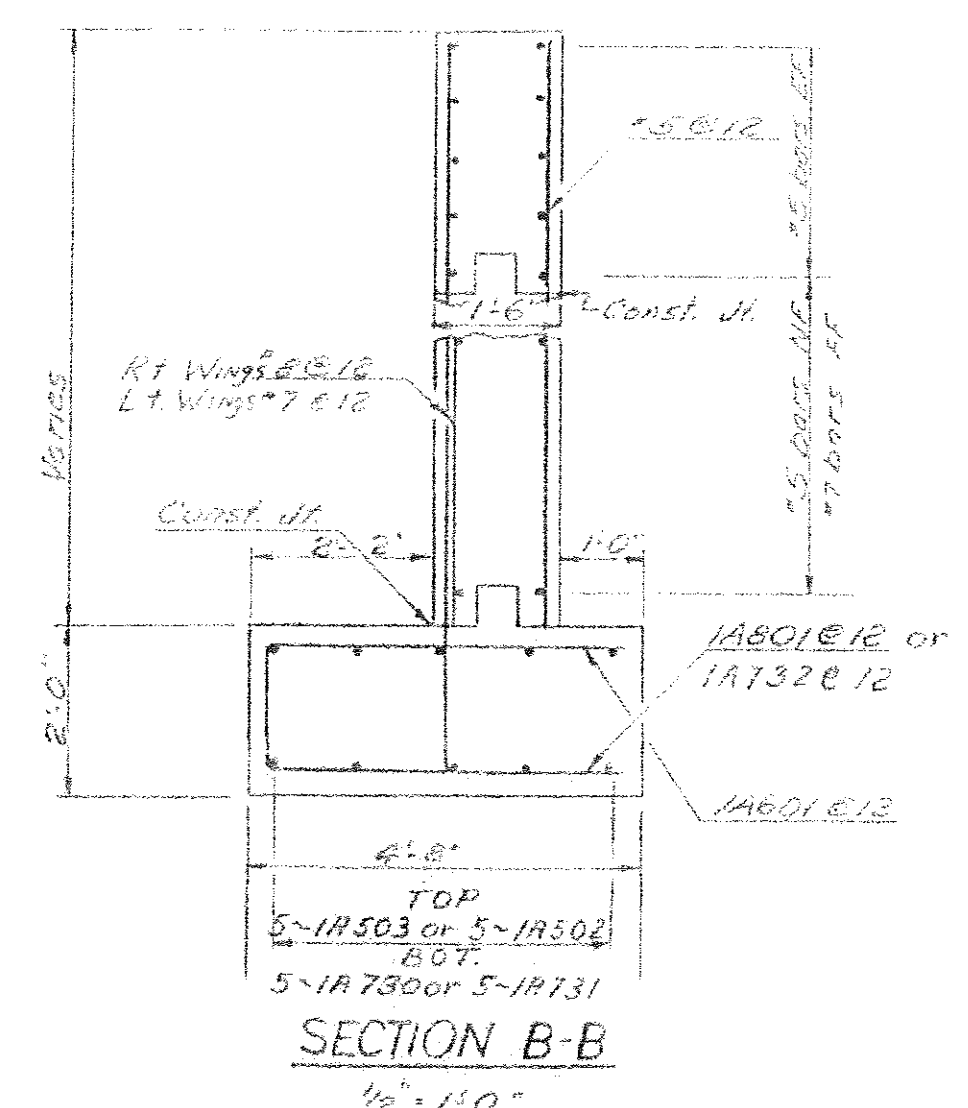
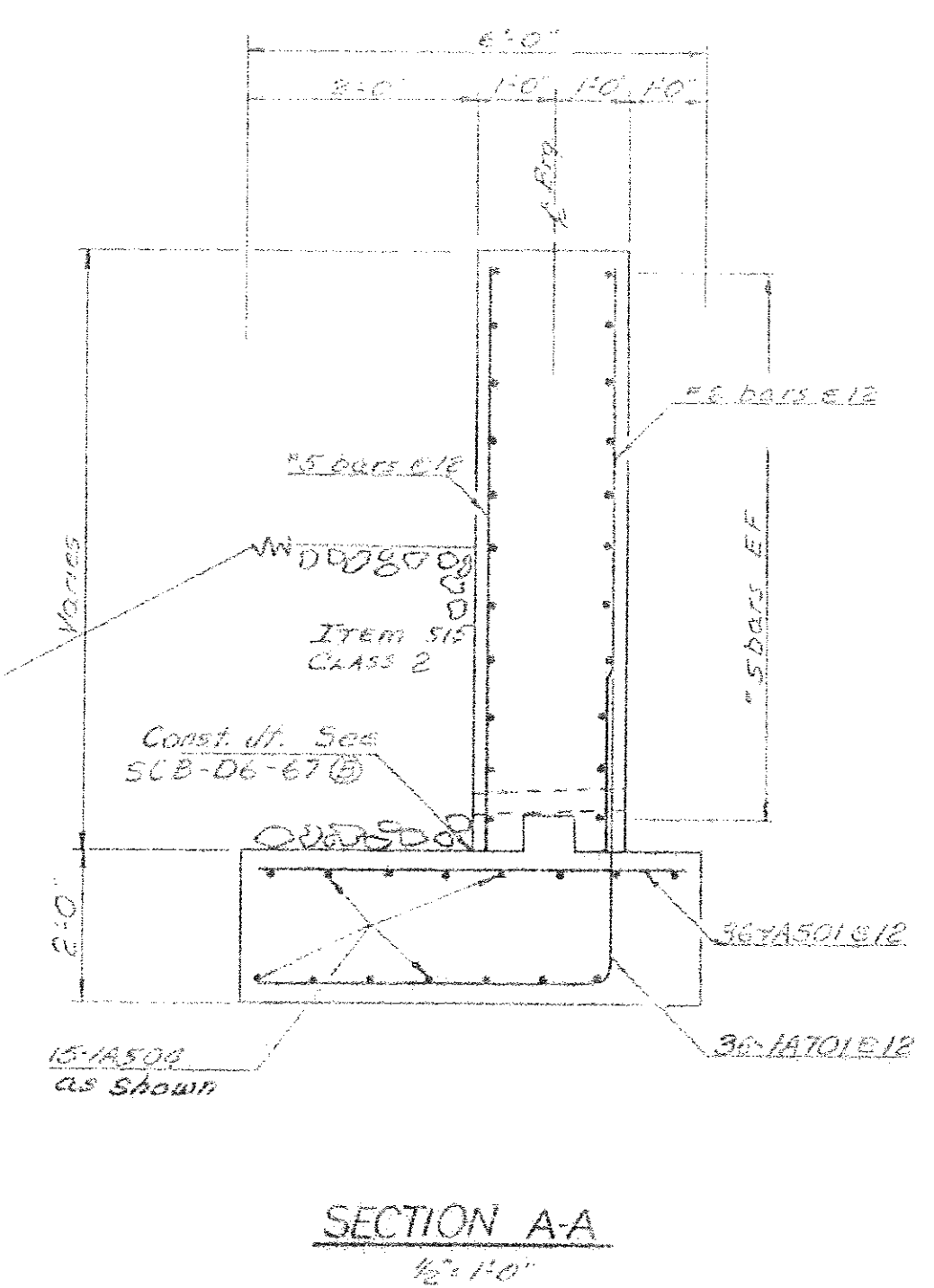
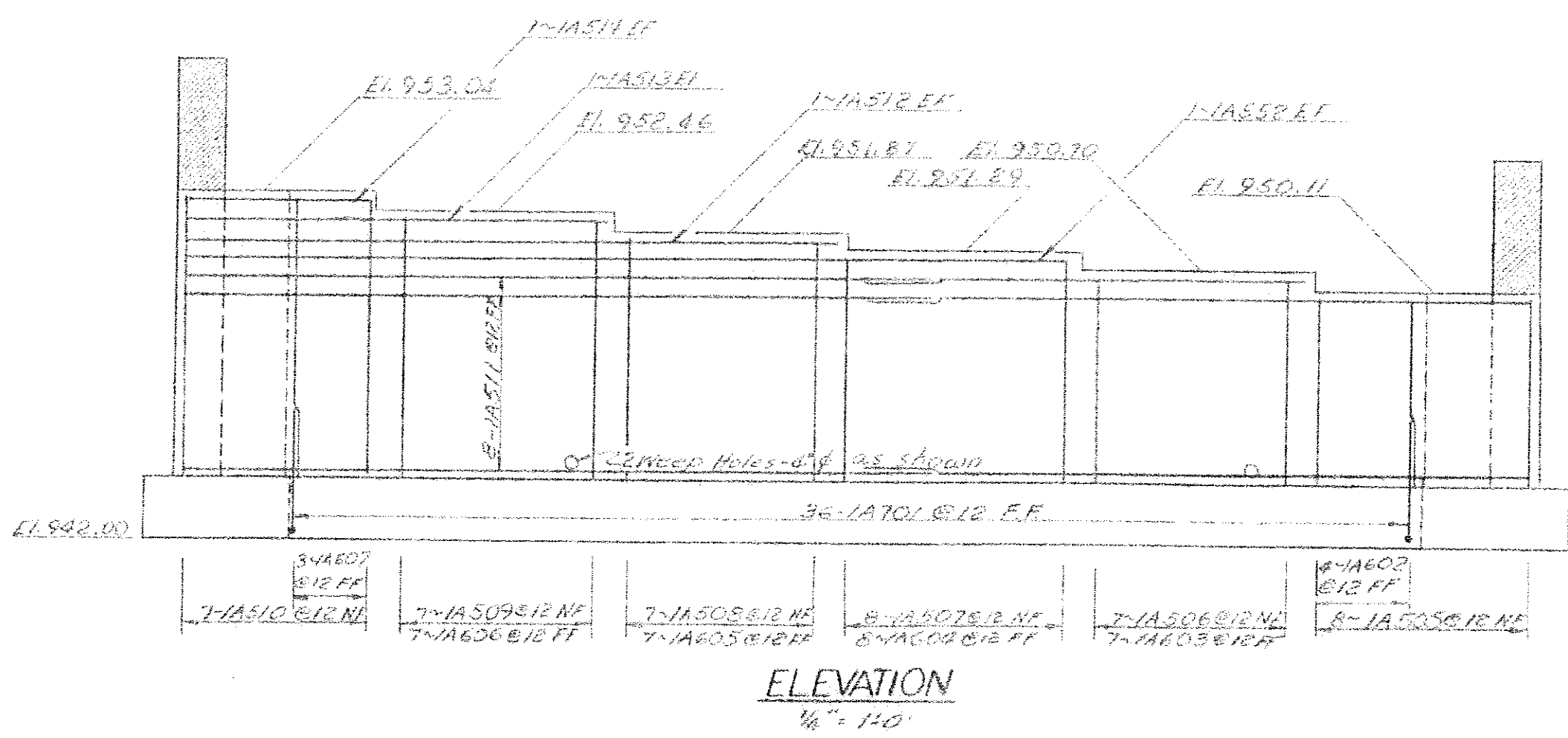
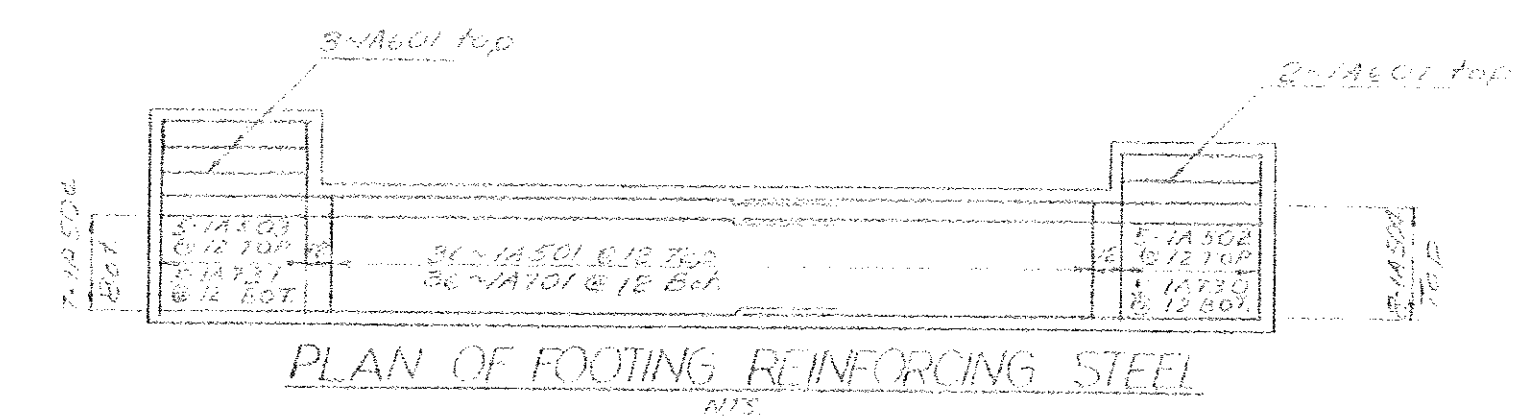
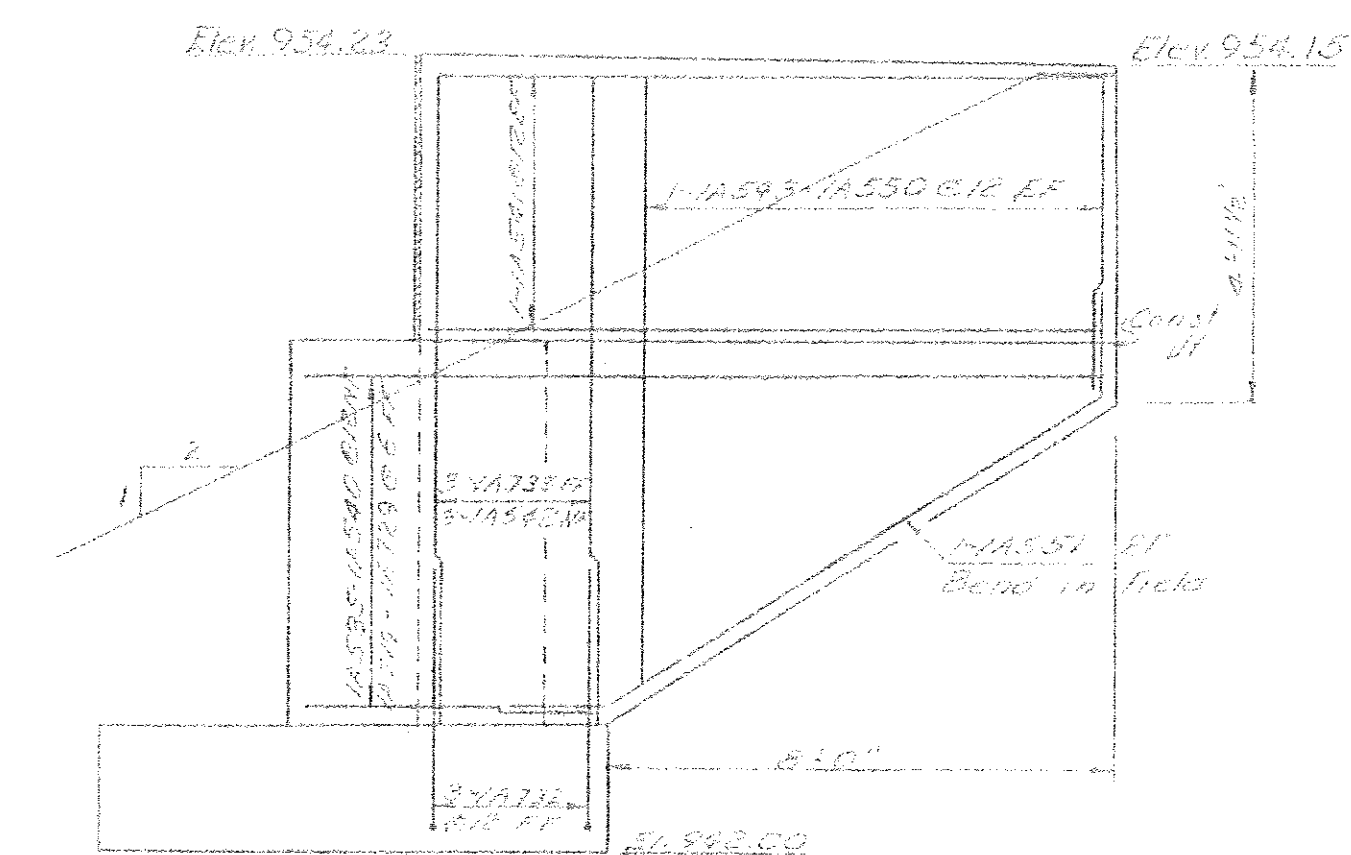
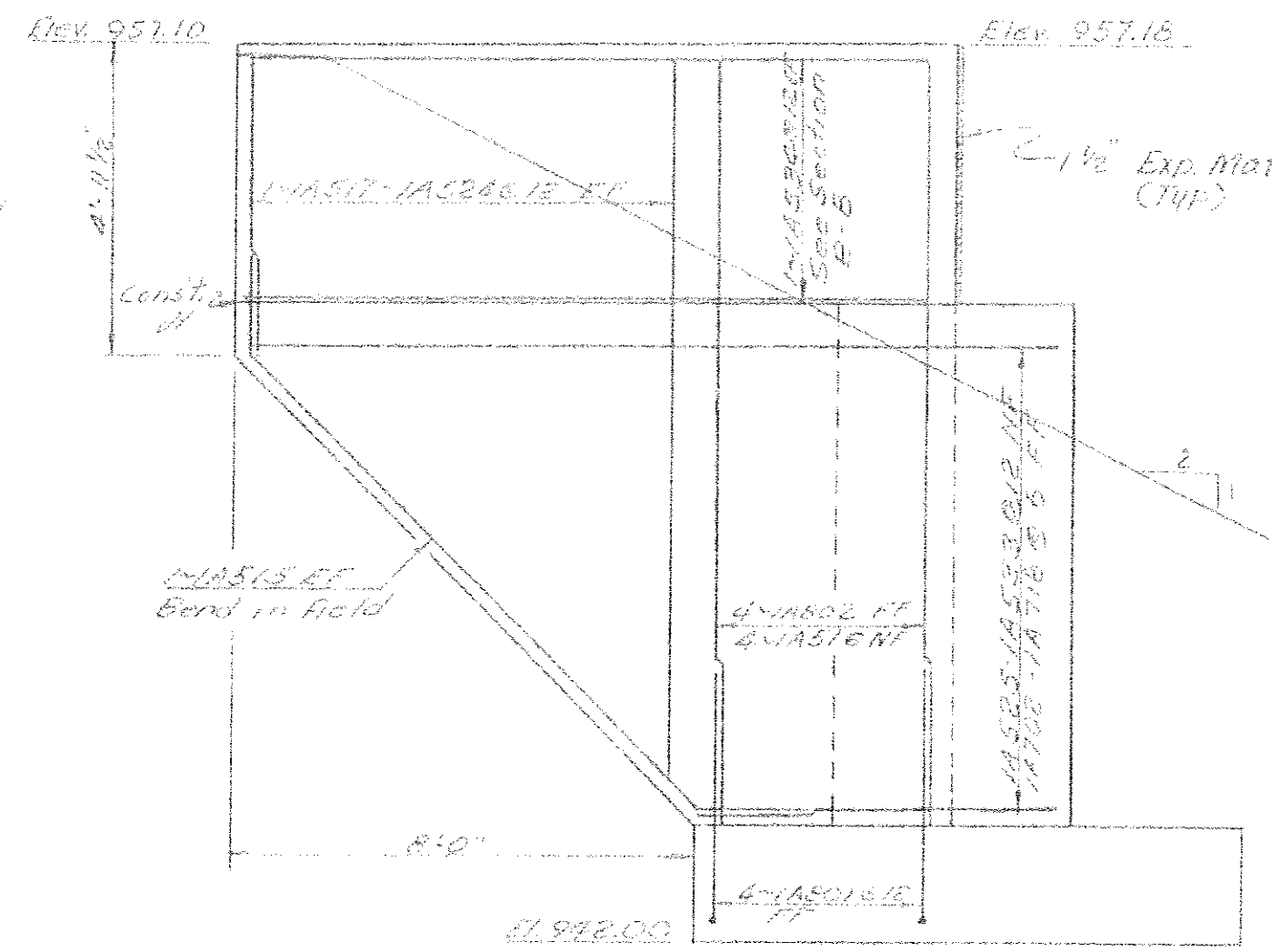
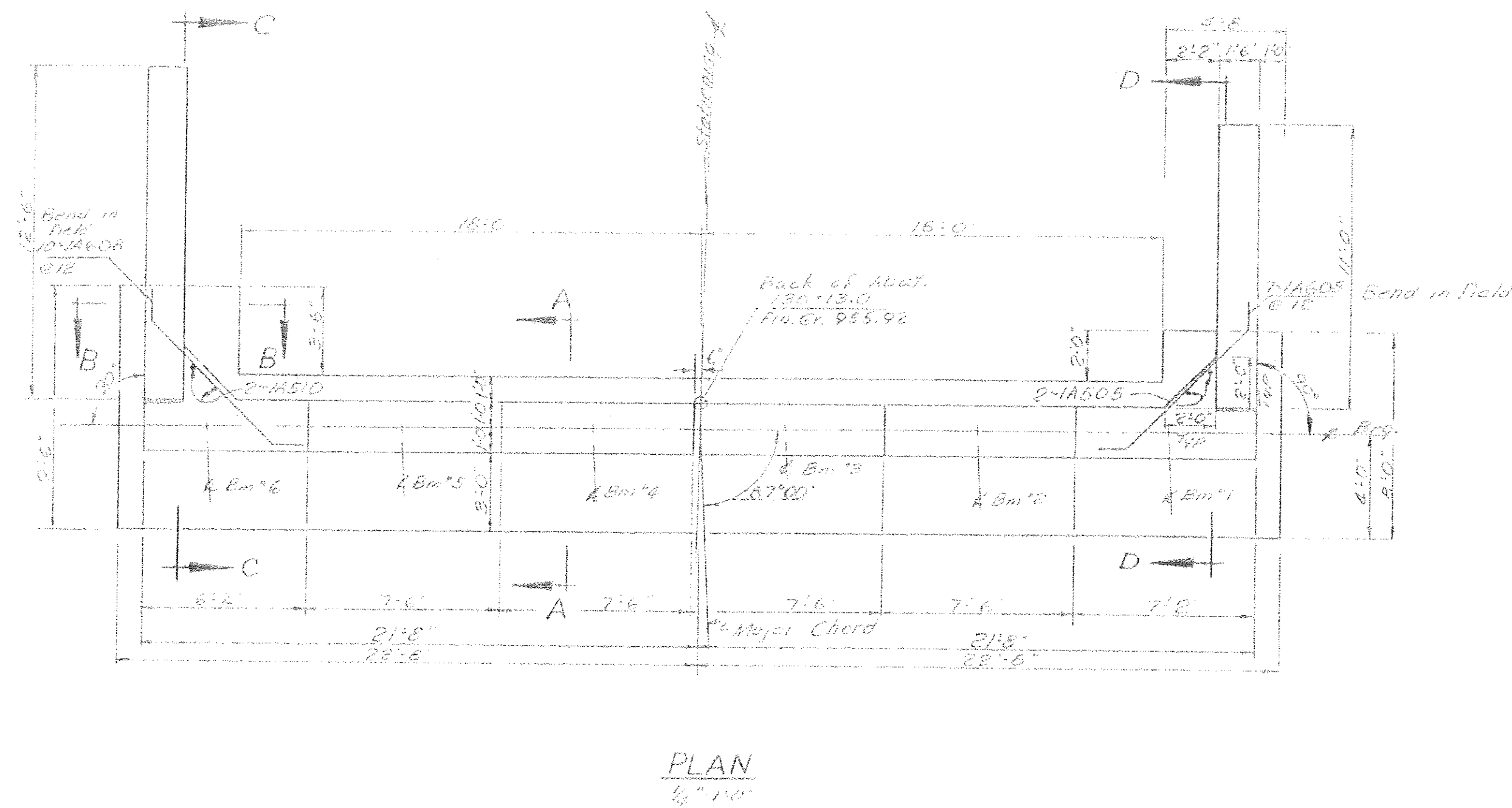


STATEWIDE - N.E. REGION
 BHF MEMB(19)
 SHEET 28 OF 80
 BRIDGE No. 97
 FOR REFERENCE ONLY



- Reinforcing steel cover shall be 5" in the footing and 2" in the stem and wings unless otherwise indicated.
- Do not place concrete in wings above construction joint prior to completion of deck slab.
- Footing is to be placed on earth capable of supporting 195 T/sq ft bearing pressure. Where existing ground is unsuitable remove as Item 109 and replace with Item 222-B, Gravel Backfill for Structures.
- Apply Item 410 paint waterproofing to the earth side of wings.

STATE OF VERMONT	
DEPARTMENT OF HIGHWAYS	
PROJECT	BLOOMFIELD
TOWN OR	BLOOMFIELD
BRIDGE No. VT. 105	Br. No. 130+55
VT 105 OVER EAST BRANCH NULHEGAN RIVER	
ABUTMENT #1 DETAILS	
SCALE AS NOTED	
SECTION SUPERVISOR F.L. MERCHANT	
DRAWN BY COBURN	CHECKED BY G. TUCKER
6/66	6/66
PROJECT NO. BB-034-3-66-90	
ENGR. 04101-53	BR105