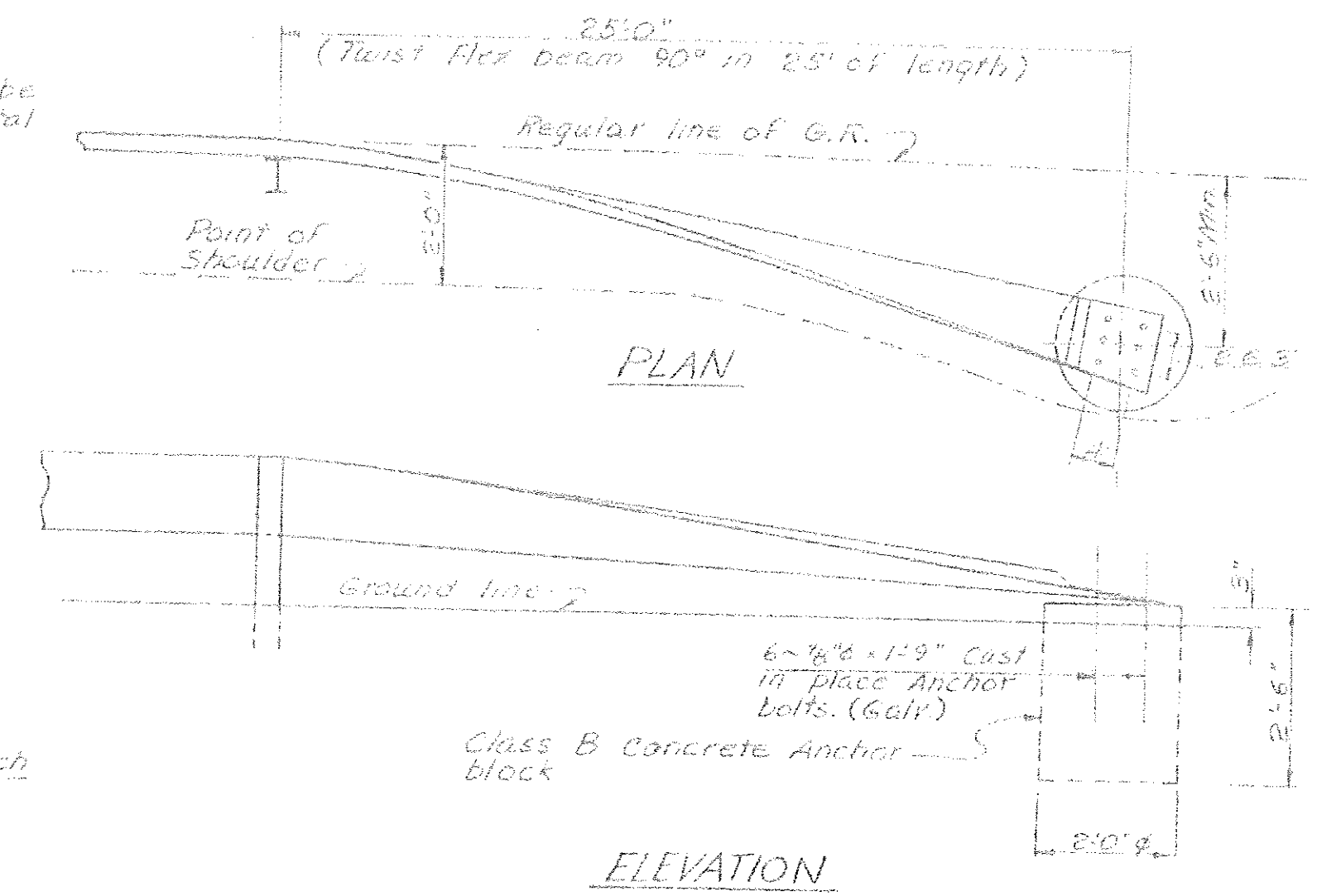


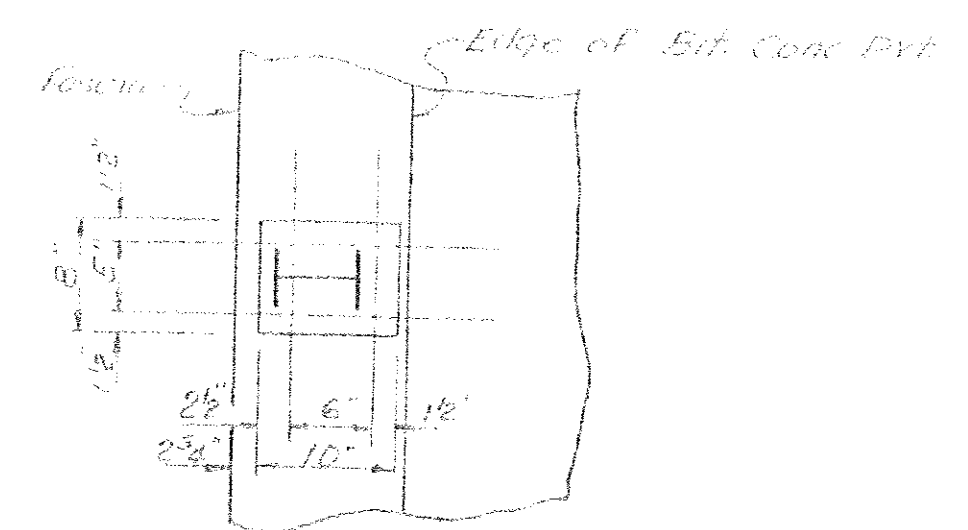
TYPICAL SECTION
1/2" = 1'-0"

~ Apply Item #10 - Paint Waterproofing to the earth side of curtain wall.



ANCHORAGE DETAILS FOR RAILING
N.T.S.

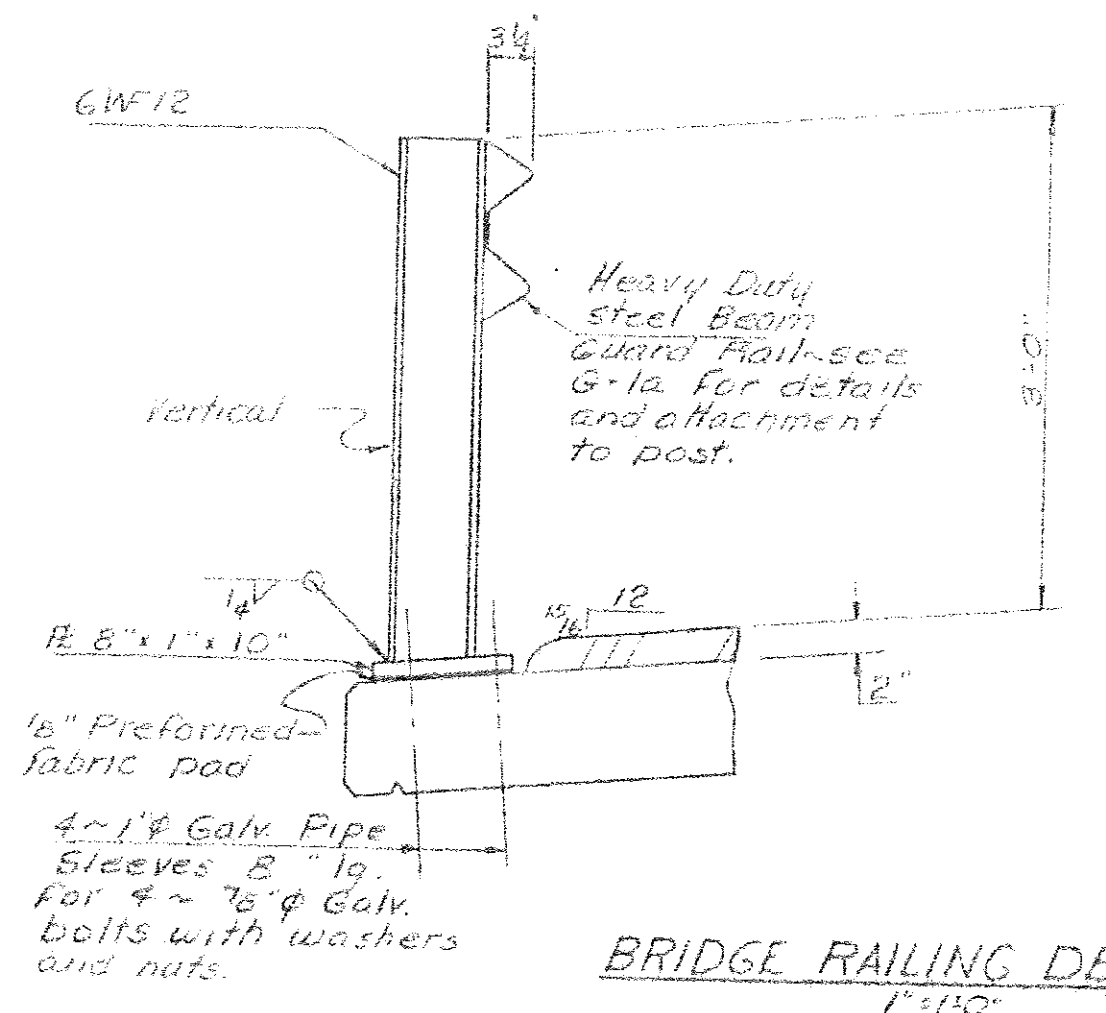
1. Stop drip notch 6" from curtain wall.
2. The Contractor is to furnish belts for railing anchorage.
3. Extend Approach Slab Bracket as shown on SCB-D2-67 entire length of curtain wall.



~ Wingwall railing details will be similar to this detail except as stated. The base plate will be horizontal. There will be no pipe sleeves. The anchor bolts will be cast into the wingwall.

~ The entire assembly shall be galvanized as per A.S.T.M. A123.

~ Set Railing Post normal to grade.



BRIDGE RAILING DETAILS
1" = 1'-0"

STATEWIDE - N.E. REGION
BHF MEMB(19)
SHEET 27 OF 80
BRIDGE No. 97
FOR REFERENCE ONLY

STATE OF VERMONT	
DEPARTMENT OF HIGHWAYS	
PROJECT	BLOOMFIELD
TOWN OF	BLOOMFIELD
ROUTE No. VI 105	BR. STA. 130+55
VI 105 OVER EAST BRANCH NULHEGAN RIVER	
TYPICAL SECTION & RAILING DETAILS	
SCALE	AS NOTED
SECTION SUPERVISOR	RL MERCHANT
DRAWN BY	G. BRYAN CHECKED BY R. WATSON
PROJECT No.	BB-034-3-6690
SHEET	27 OF 80