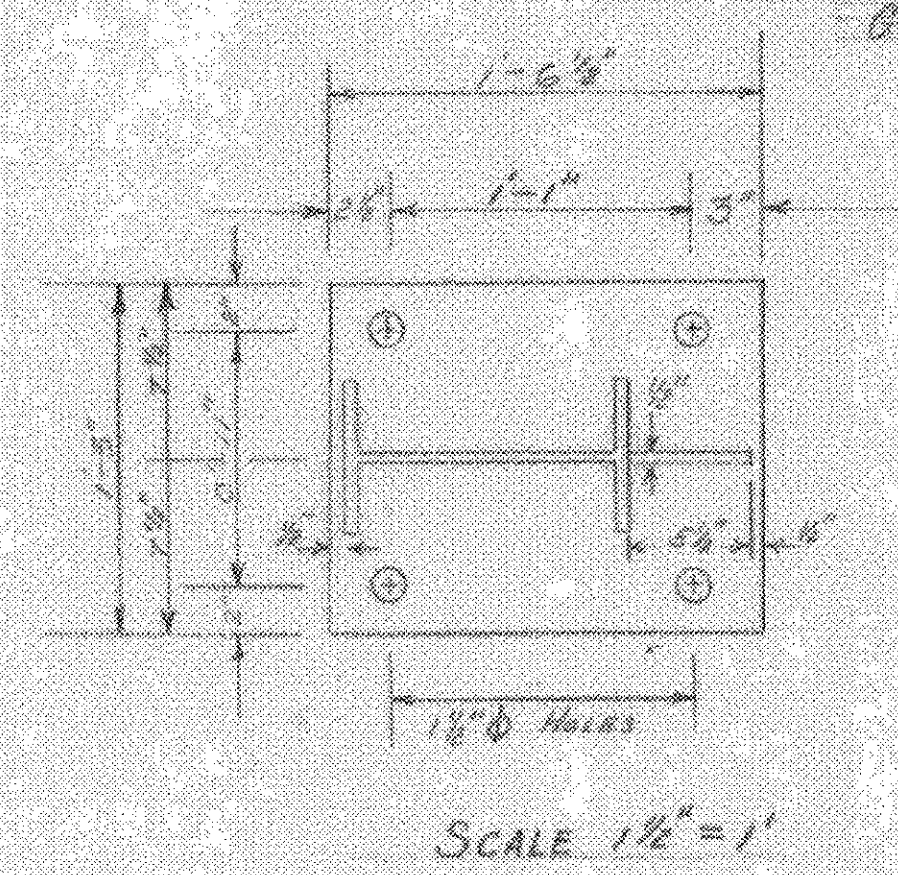
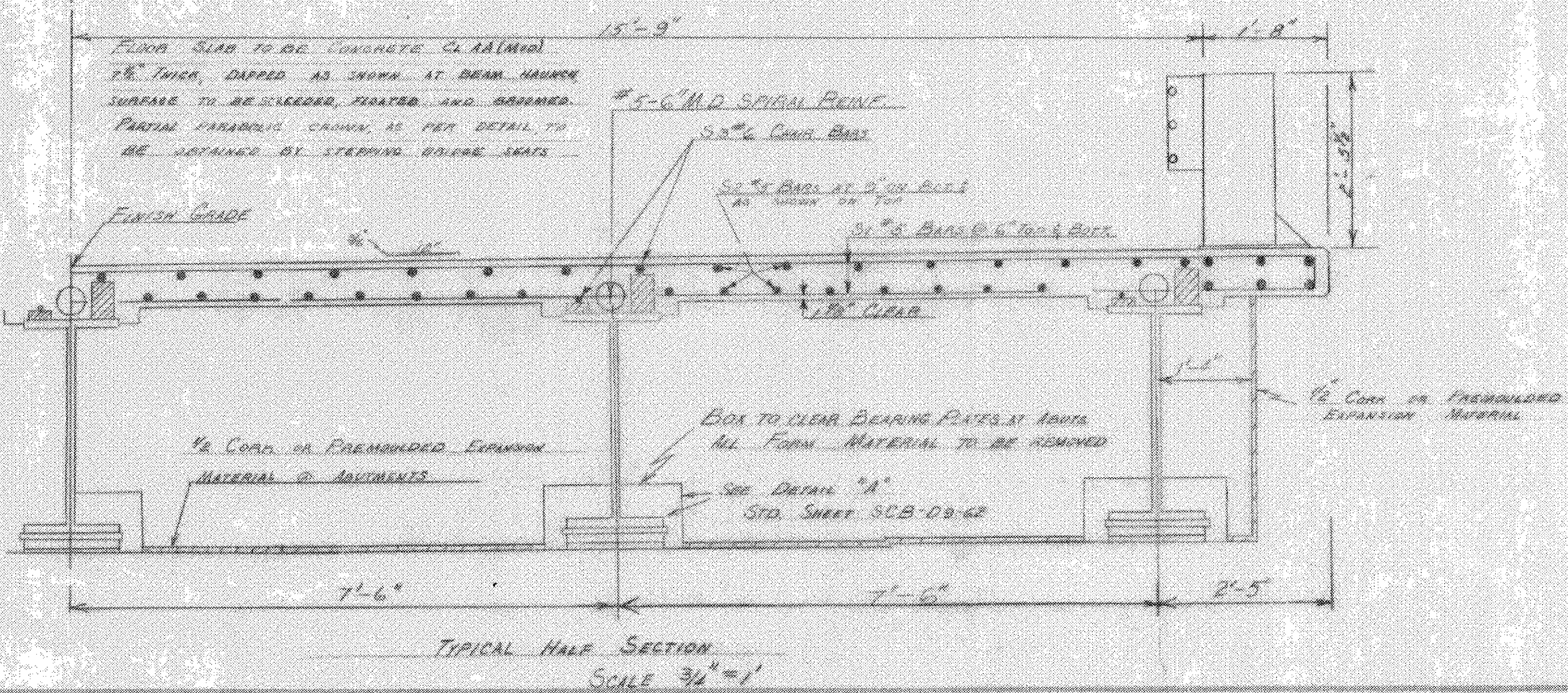
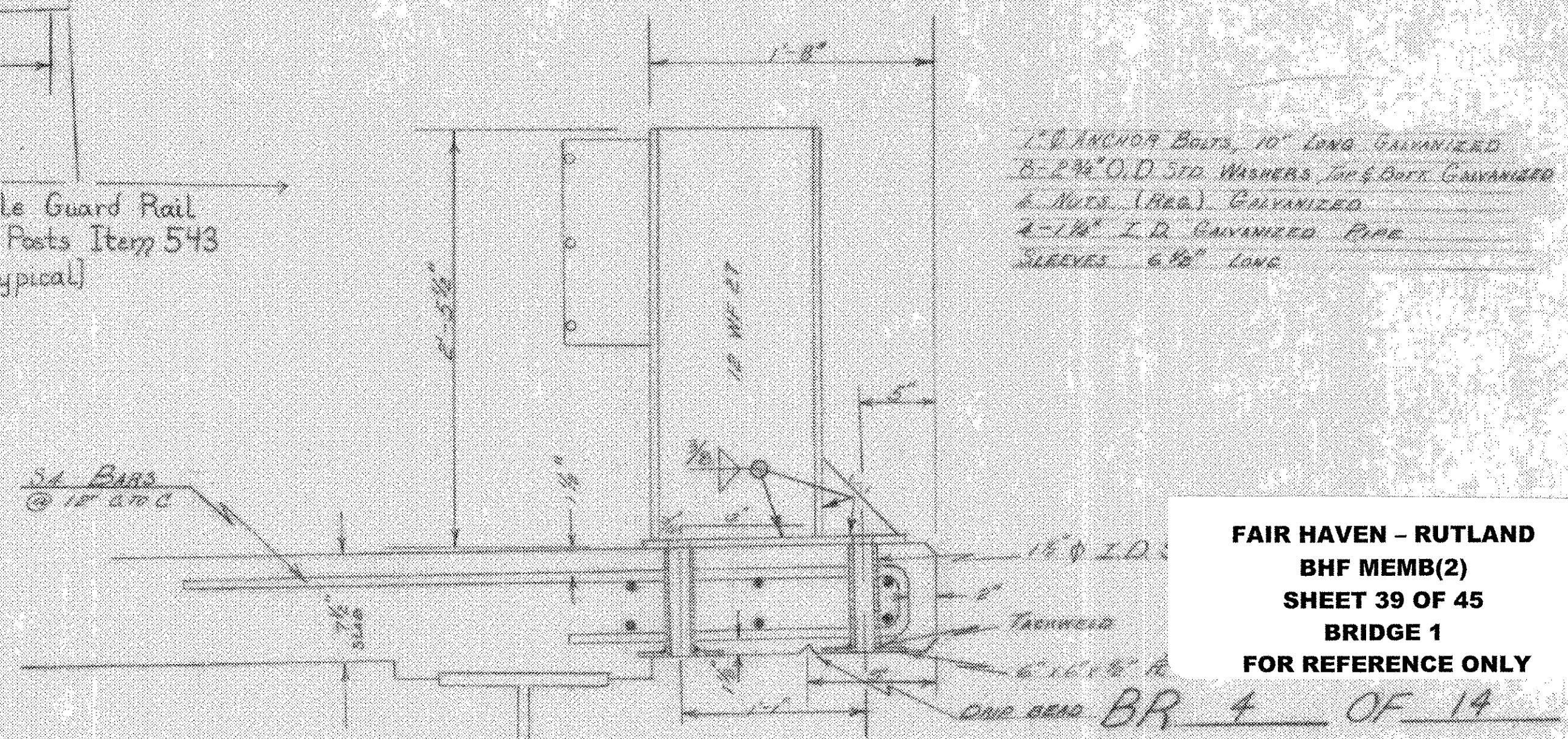


PLAN  
Scale 3/16" = 1'-0"



- For additional details of Cover Plates & Diaphragms See Std Sheet SCB-D7-62 & SCB-30-62
- For additional details of Bridge Rail, Curb & Strippers see std sheets SCB-D6-62, Detail A
- THE RAILING SPACING SHOWN IS TYPICAL FOR EACH SIDE & IT SHALL CONFORM TO STANDARD SHEET B-3 ITEM # 543

- 1" ANCHOR BOLTS, 10" LONG GALVANIZED
- 8-2 3/4" O.D. STD. WASHERS, TOP & BOTTOM GALVANIZED
- 2-AUTS. (1 REG.) GALVANIZED
- 4-1 1/2" I.D. GALVANIZED PIPE
- SIREVES 6 1/2" LONG



FAIR HAVEN - RUTLAND  
BHF MEMB(2)  
SHEET 39 OF 45  
BRIDGE 1  
FOR REFERENCE ONLY

ITEM NO.	ITEM	UNIT	NET	OVERRIDE	TOTAL	FINAL
102-A	CHAN. EXCAV. OF EARTH	C.Y.				
102-B	CHAN. EXCAV. OF ROCK	C.Y.				
102-C	UNCLASS. CHAN. EXCAV.	C.Y.				
107	STRUCT. EXCAV.	C.Y.				
401-B	CONC. CLASS B (MOD.)	C.Y.				
402	REINFC. STEEL	LBS.				
407	ASPHALTIC AEB. COATING	S.Y.				
502-B	TREATED TIMBER PILING	L.F.				
503	SPLICES FOR STEEL PILING	EA.				
504	STEEL PILING	L.F.				
502-A	UNTREATED TIMBER PILING	L.F.				

STATE OF VERMONT  
DEPARTMENT OF HIGHWAYS

TOWN OF *Castleton*

ROAD NO. SA#3 BRIDGE NO.

*Framing, Railing & Curb Plan*

SCALE AS SHOWN

SURVEYED BY *Martin*

DRAWN BY *SHS* CHECKED BY *X*

PROJECT NO. SA#26-1963

SHEET 12 OF 35