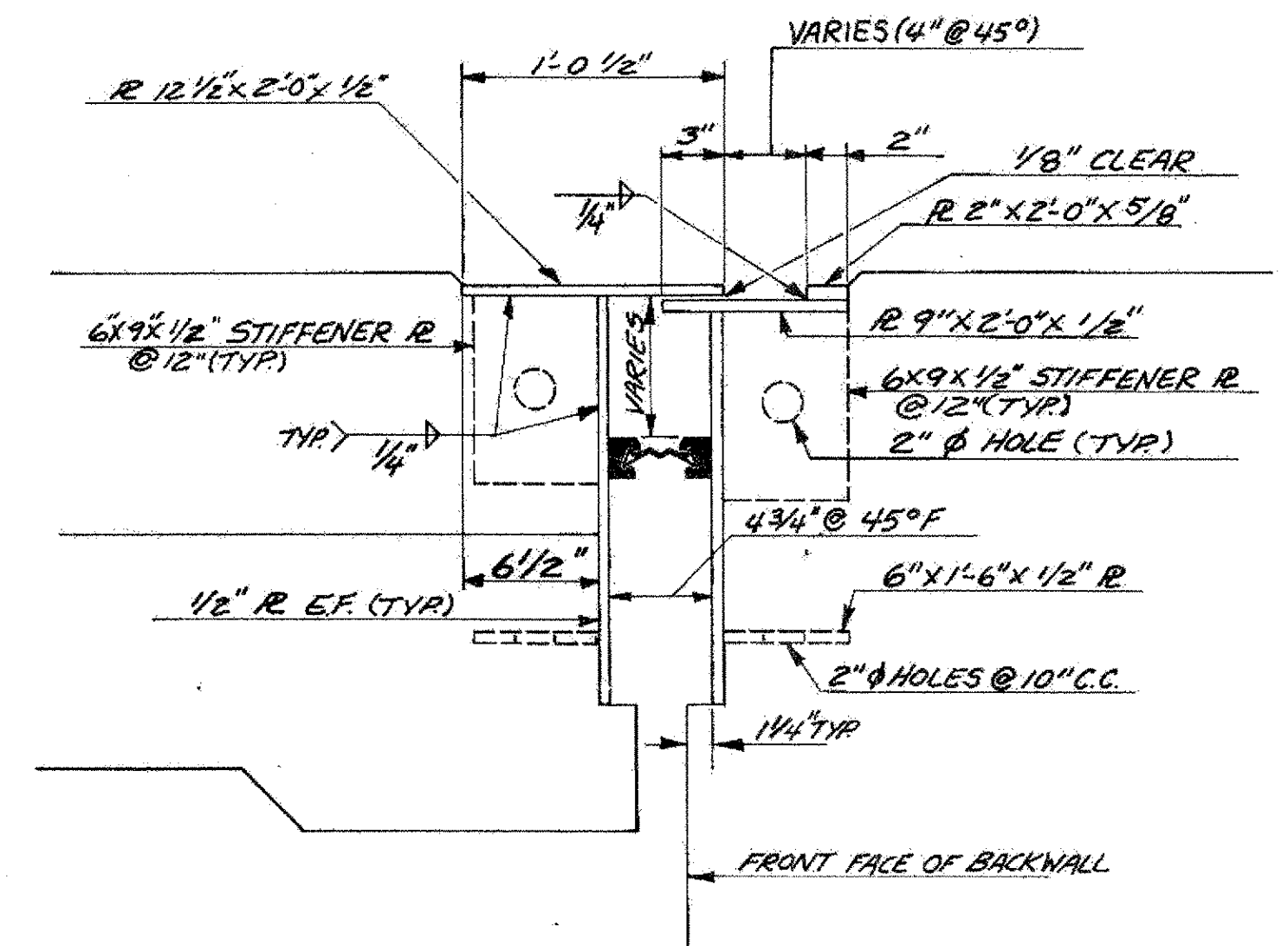
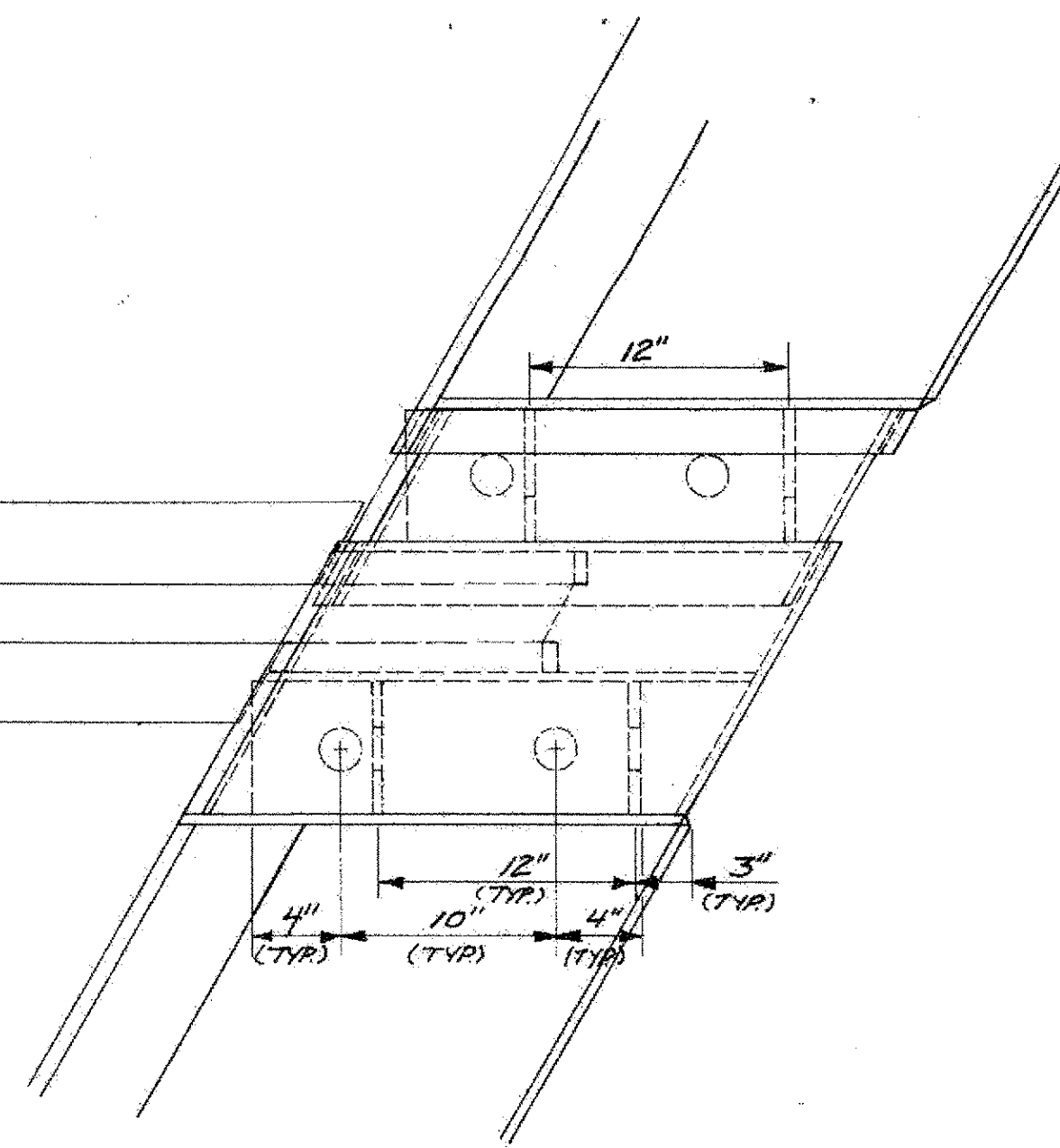
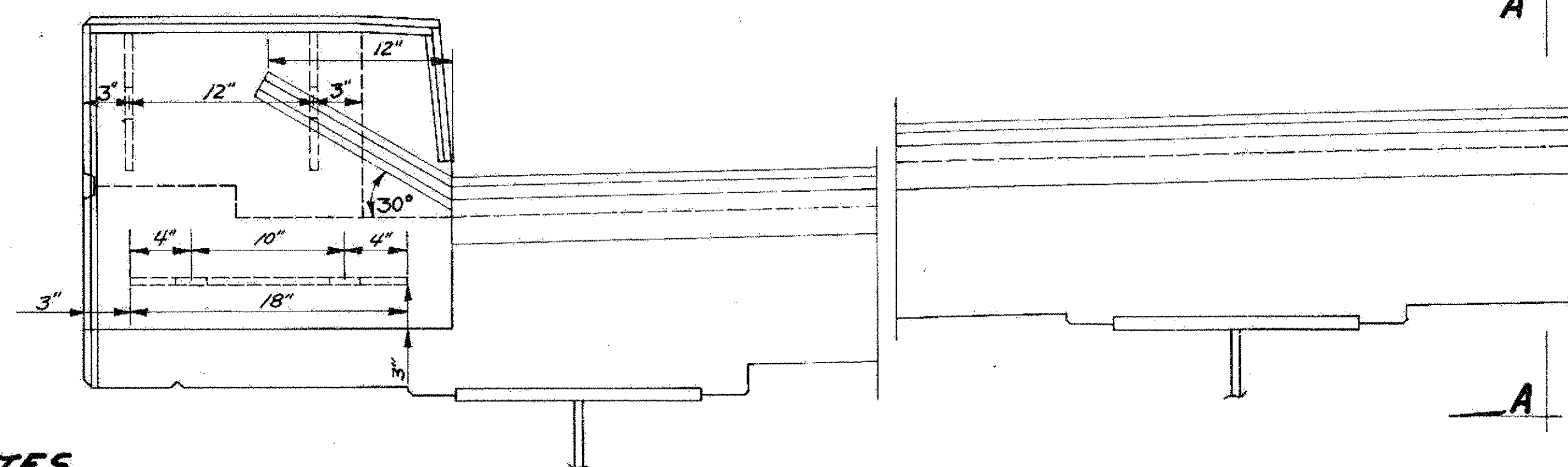


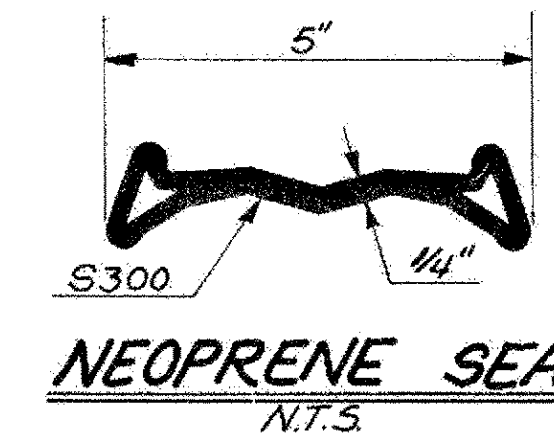
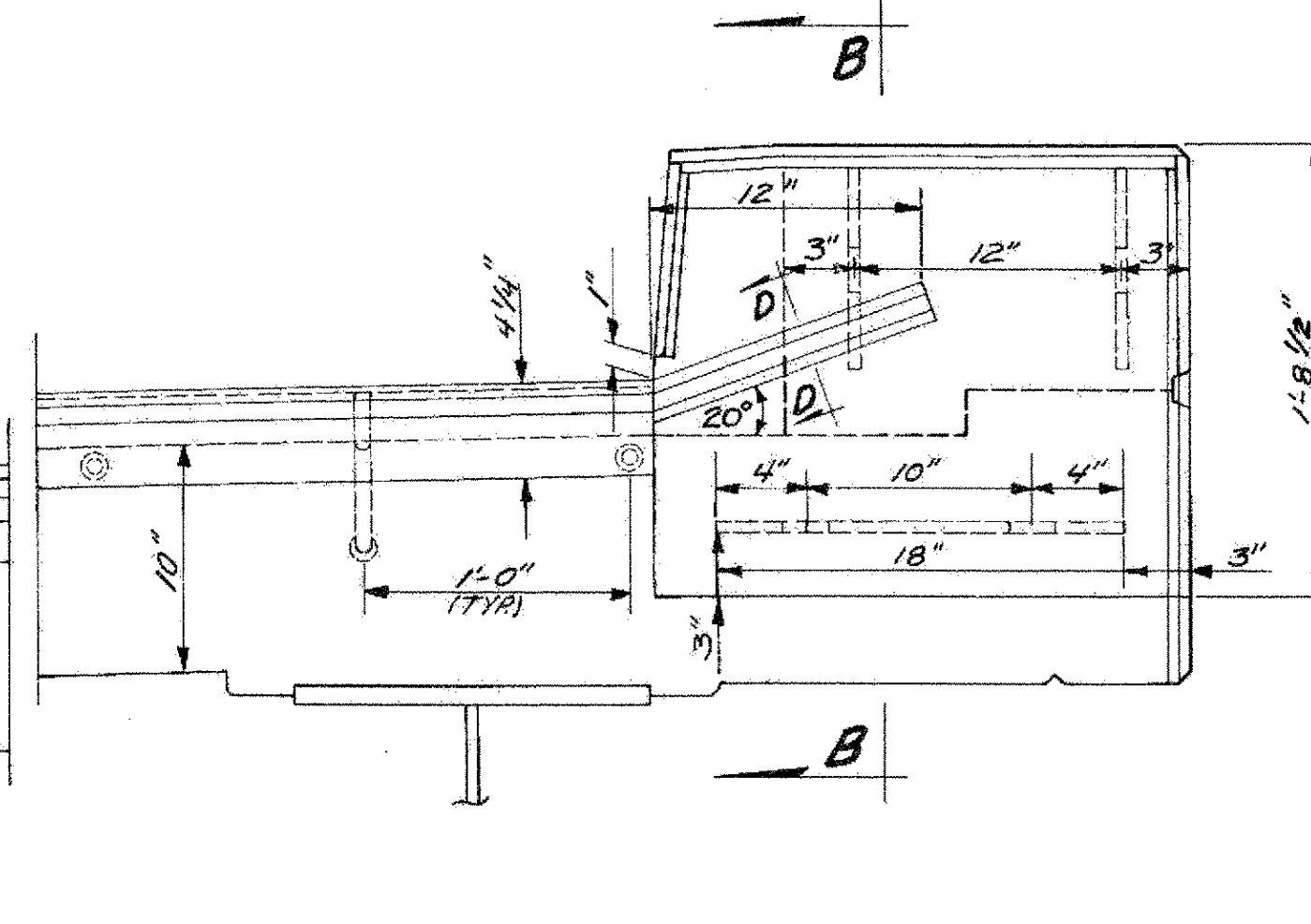
**PLAN ALONG & JOINT**  
SCALE: 1 1/2" = 1'-0"



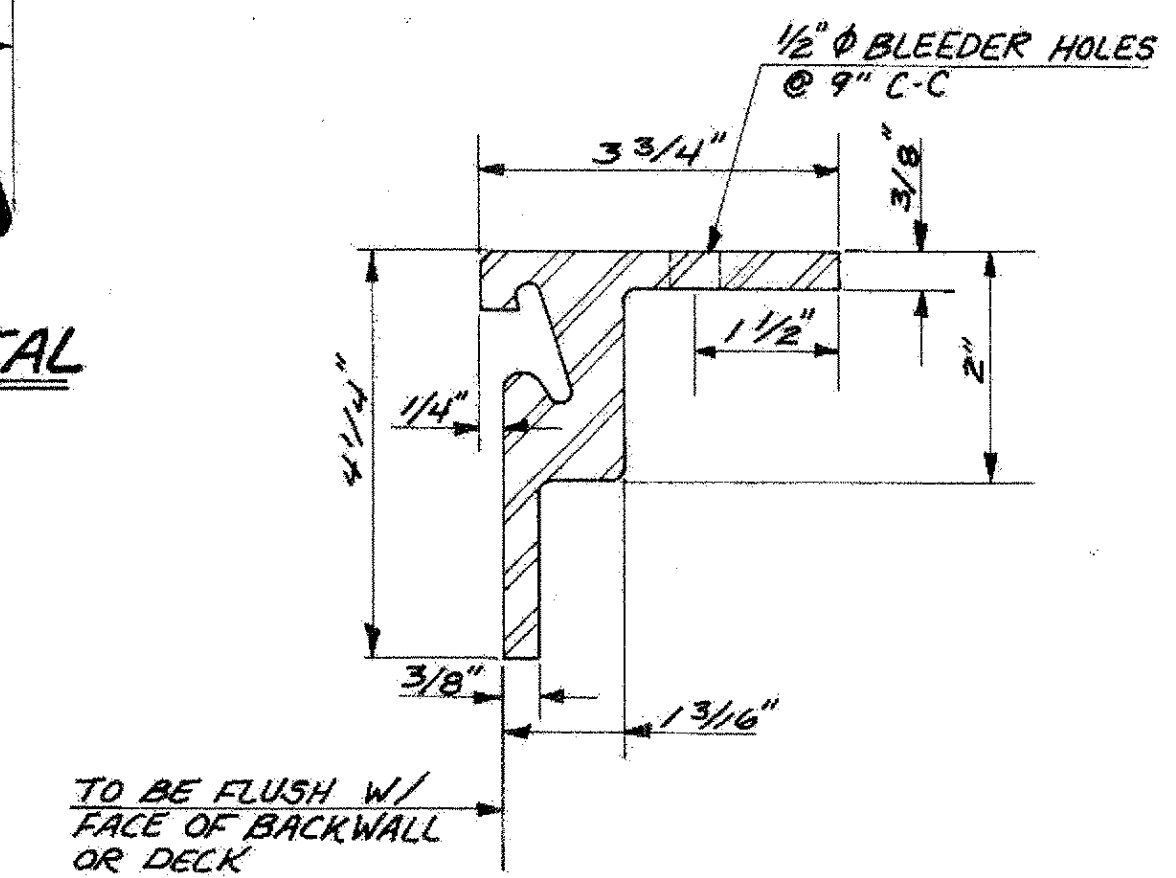
**SECTION B-B**  
SCALE: 1 1/2" = 1'-0"



**ELEVATION ALONG & JOINT**  
SCALE: 1 1/2" = 1'-0"



**NEOPRENE SEAL**  
N.T.S.

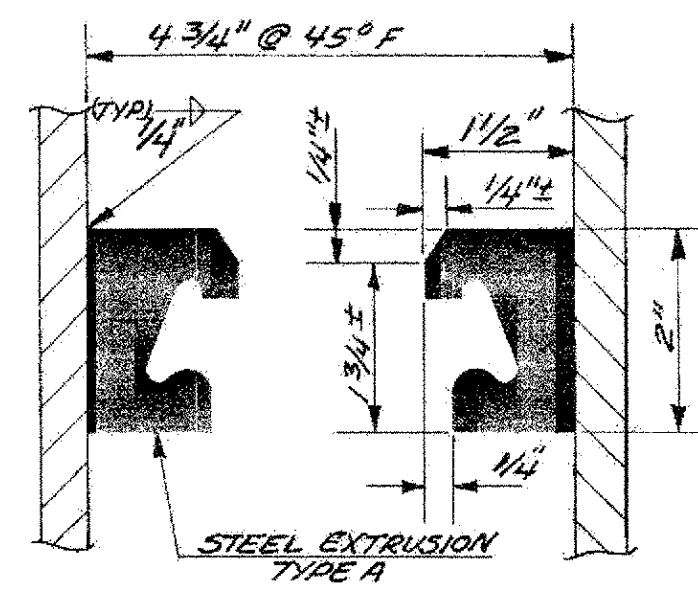


**STEEL EXTRUSION**  
SCALE: 1/2" = 1"  
(TYPE C)

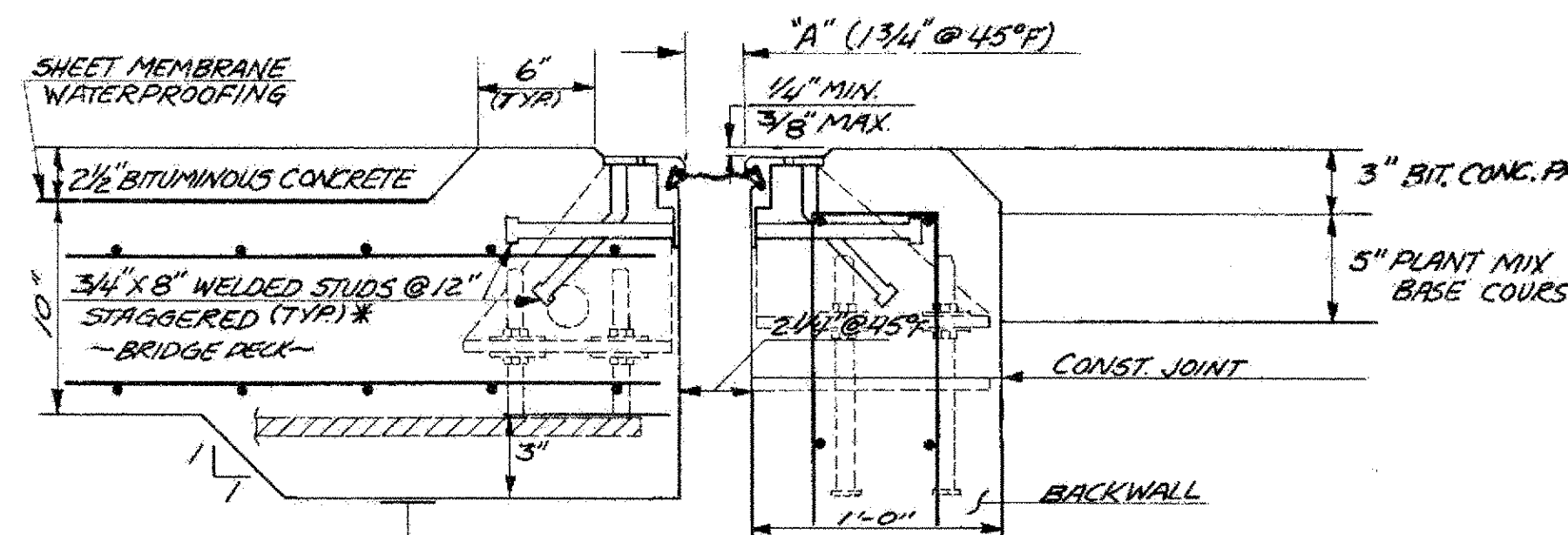
**NOTES**

- ALTERNATE EXPANSION JOINTS CAPABLE OF PROVIDING A TOTAL MOVEMENT OF 3" MAY BE SUBMITTED FOR APPROVAL TO THE ENGINEER IN LIEU OF THE DESIGN AS DETAILED. SEE NOTE 6.
- ALL STEEL COMPONENTS USED IN THE EXPANSION JOINT ASSEMBLY SHALL BE ASTM A-36 AND SHALL BE GALVANIZED OR METALIZED AS PER SECTION 731.06.
- THE FABRICATOR SHALL SEND DETAILED DRAWINGS OF THE EXPANSION DAM TO THE STRUCTURES DIVISION FOR APPROVAL PRIOR TO FABRICATION.
- THE ITEM "ELASTOMERIC EXPANSION DAM" (3" MOVEMENT) SHALL INCLUDE IN THE COST PER LINEAR FOOT THE FABRICATION AND ERECTION (INCLUDING TACK WELDS) OF THE COMPLETE EXPANSION JOINT ASSEMBLY INCLUDING THE EXTRUDED STEEL SECTIONS, PREFORMED NEOPRENE SEAL, WELDED STUDS, CURB PLATES AND ANY OTHER MISCELLANEOUS HARDWARE.
- THE EXPANSION DAM SHALL BE SHIPPED WITH AN APPROVED ADJUSTABLE CONNECTION SYSTEM WHICH WILL ALLOW THE COMPLETE UNIT TO BE ADJUSTED FOR TEMPERATURE AND ANCHORED IN POSITION.
- THE JOINT SHOWN ON SHEET BR 613 (U.S. 4 OVER OTTER CREEK) IS AN ACCEPTABLE OPTION FOR THE JOINT SHOWN HERE. IF THE JOINT SHOWN ON SHEET BR 613 IS SELECTED THEN THE HOPPERS & DOWN-SPOUT WILL BE PAID UNDER THE ITEM "STRUCTURAL STEEL".

TEMP °F	"A"
20	2 1/16"
30	1 15/16"
40	1 13/16"
50	1 11/16"
60	1 9/16"
70	1 7/16"
80	1 5/16"
90	1 3/16"
100	1 1/8"



**SECTION D-D**  
SCALE: 1/2" = 1"



**SECTION A-A**  
SCALE: 1 1/2" = 1'-0"

FOR ADDITIONAL DETAILS OF ADJUSTMENT SYSTEM, SEE SHEET BR 613 (U.S. 4 OVER OTTER CREEK)

\* TACK WELD STUDS TO REINFORCING STEEL.

**STATE OF VERMONT**  
**AGENCY OF TRANSPORTATION**

TOWN OF <b>RUTLAND</b>	Bridge No. <b>5</b>
HIGHWAY NO. <b>U.S. RTE. 4</b>	Log Sta. _____
<b>U.S. RTE. 4 OVER DORR DRIVE</b>	
<b>EXPANSION JOINT DETAILS (ABUT. #1 &amp; #3)</b>	
Designed by <b>J.B. MCCARTHY</b>	Drawn by <b>L.C. GATES</b>
Checked by <b>G.S. ROGERS</b>	Bridge Design Supervisor
date <b>8/83</b>	F.W. Bolkum date <b>12/83</b>
PROJECT <b>WEST-RUTLAND-RUTLAND</b>	PROJECT NO. <b>FEGC 020-1(15)</b>
Bridge Sheet No. <b>BR 510</b>	Sheet <b>90</b> of <b>377</b>