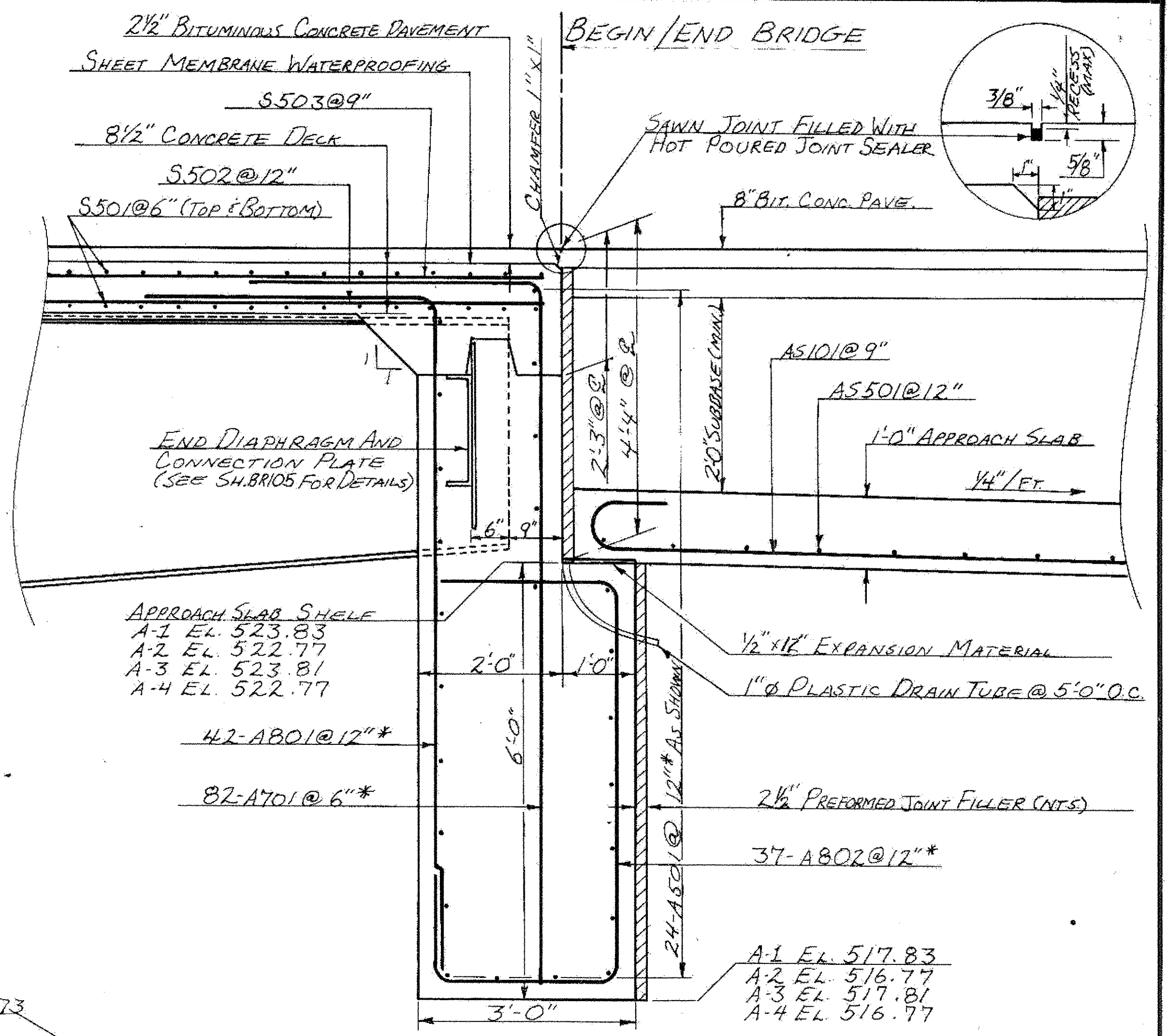
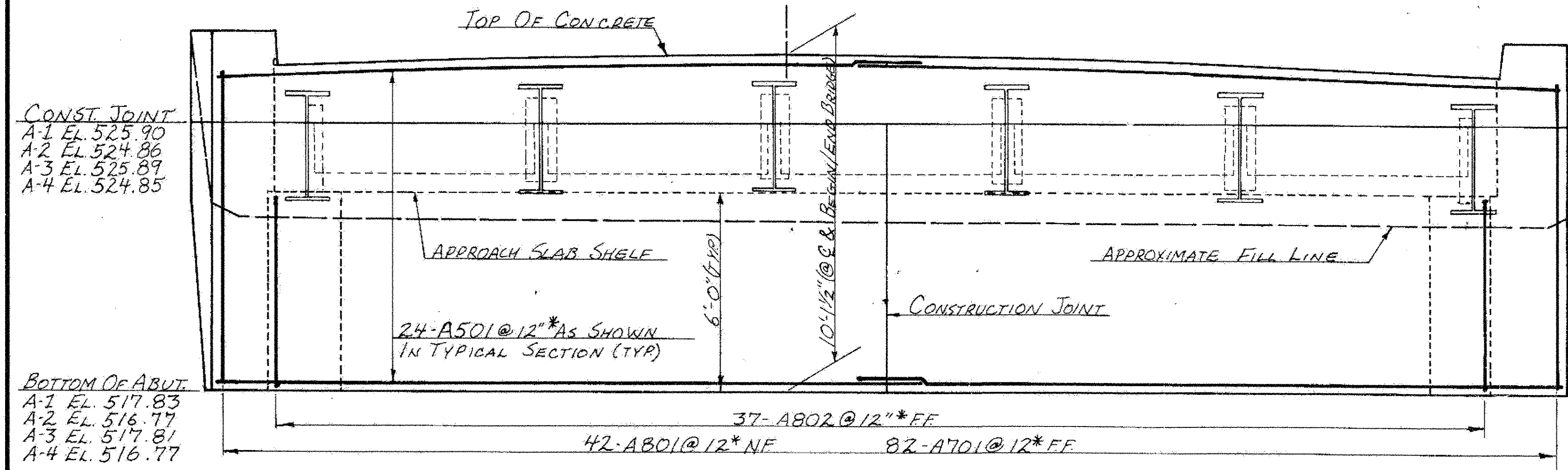


TYPICAL ABUTMENT PLAN **
SCALE: 3/8" = 1'-0"

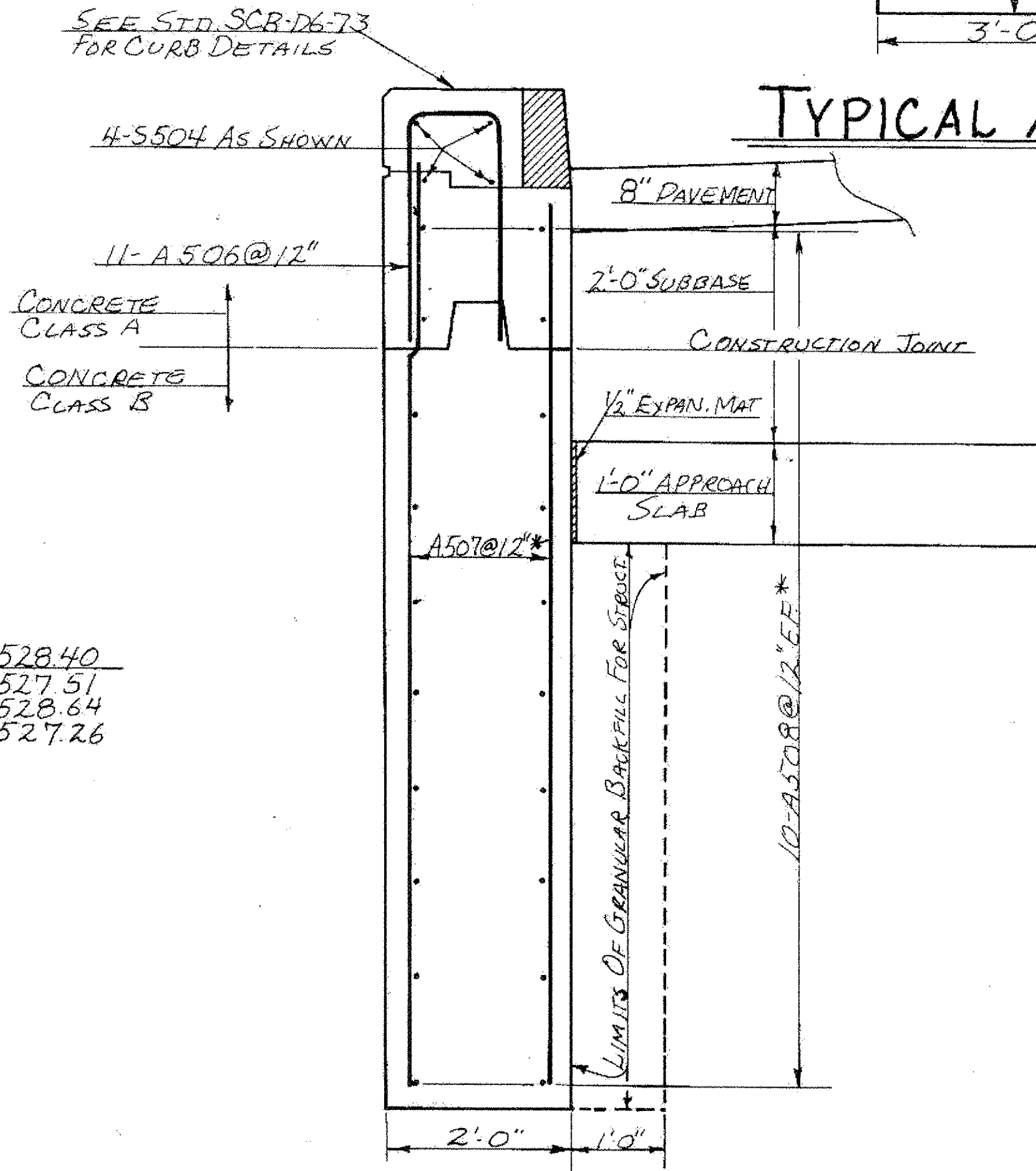


TYPICAL ABUTMENT SECTION
SCALE: 3/4" = 1'-0"

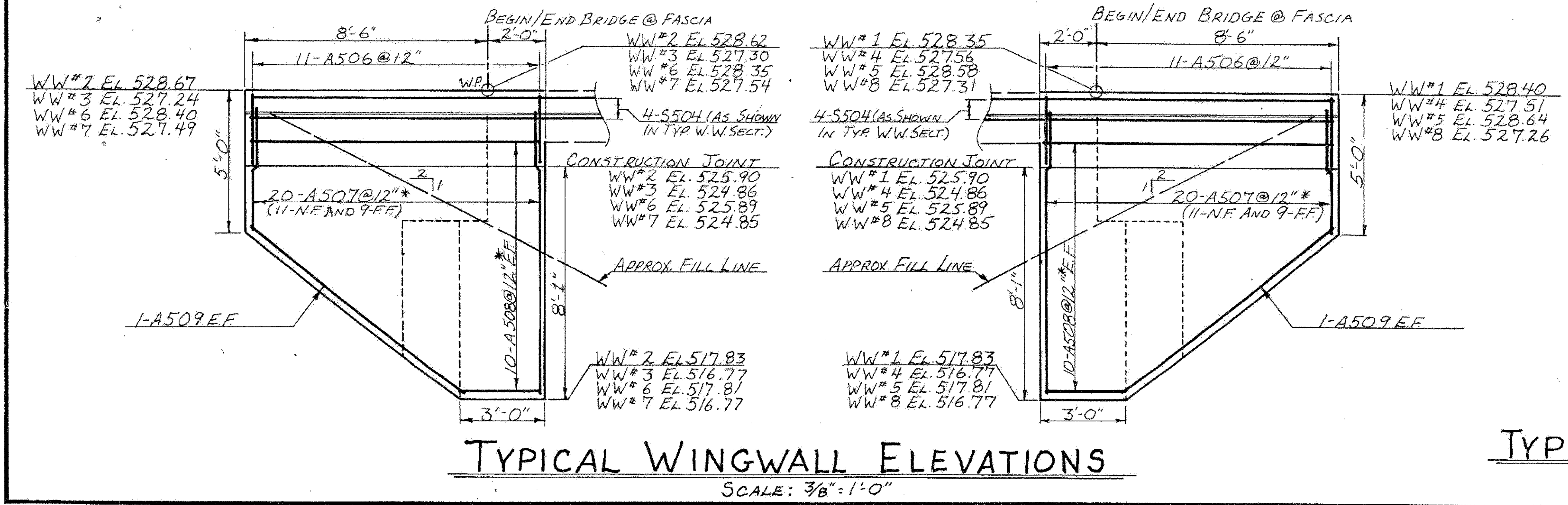
** ABUTMENTS #2 AND #3 ON OPPOSITE HAND.



TYPICAL ABUTMENT ELEVATION **
SCALE: 3/8" = 1'-0"



TYPICAL WINGWALL SECTION
SCALE: 3/4" = 1'-0"



TYPICAL WINGWALL ELEVATIONS
SCALE: 3/8" = 1'-0"

FAIR HAVEN - RUTLAND
BHF MEMB(2)
SHEET 29 OF 45
BRIDGES 16 E & W
FOR REFERENCE ONLY

- NOTES:
- SEE STANDARD SCB-06-73 FOR CONSTRUCTION JOINT DETAILS.
 - THE CLOSED CELL FOAM, PREFORMED JOINT FILLER, SHALL MEET THE REQUIREMENTS OF SUBSECTION 707.23. PAYMENT SHALL BE INCLUDED IN THE UNIT PRICE BID FOR CONCRETE, CLASS A AND B.

- NOTE: N.F. = NEAR FACE
F.F. = FAR FACE
E.F. = EACH FACE
* = CUT IN FIELD WHERE NECESSARY TO MAINTAIN CLEARANCE

STATE OF VERMONT	
AGENCY OF TRANSPORTATION	
TOWN OF WEST RUTLAND	Bridge No. 1
HIGHWAY NO. US 4	Log Sta. Surv. Sta. 790+00
ABUTMENT DETAILS	
US 4 OVER TWO-WAY RAMP	
Designed by R.P. GENDRON	Drawn by S. BASCOM
Checked by R. RAMALDO date 6-83	Bridge Design Supervisor R.S. HAUP date
PROJECT WEST RUTLAND - RUTLAND	PROJECT NO. FEGC 020-1(15)
Bridge Sheet No. BR107	Sheet 79 of 377