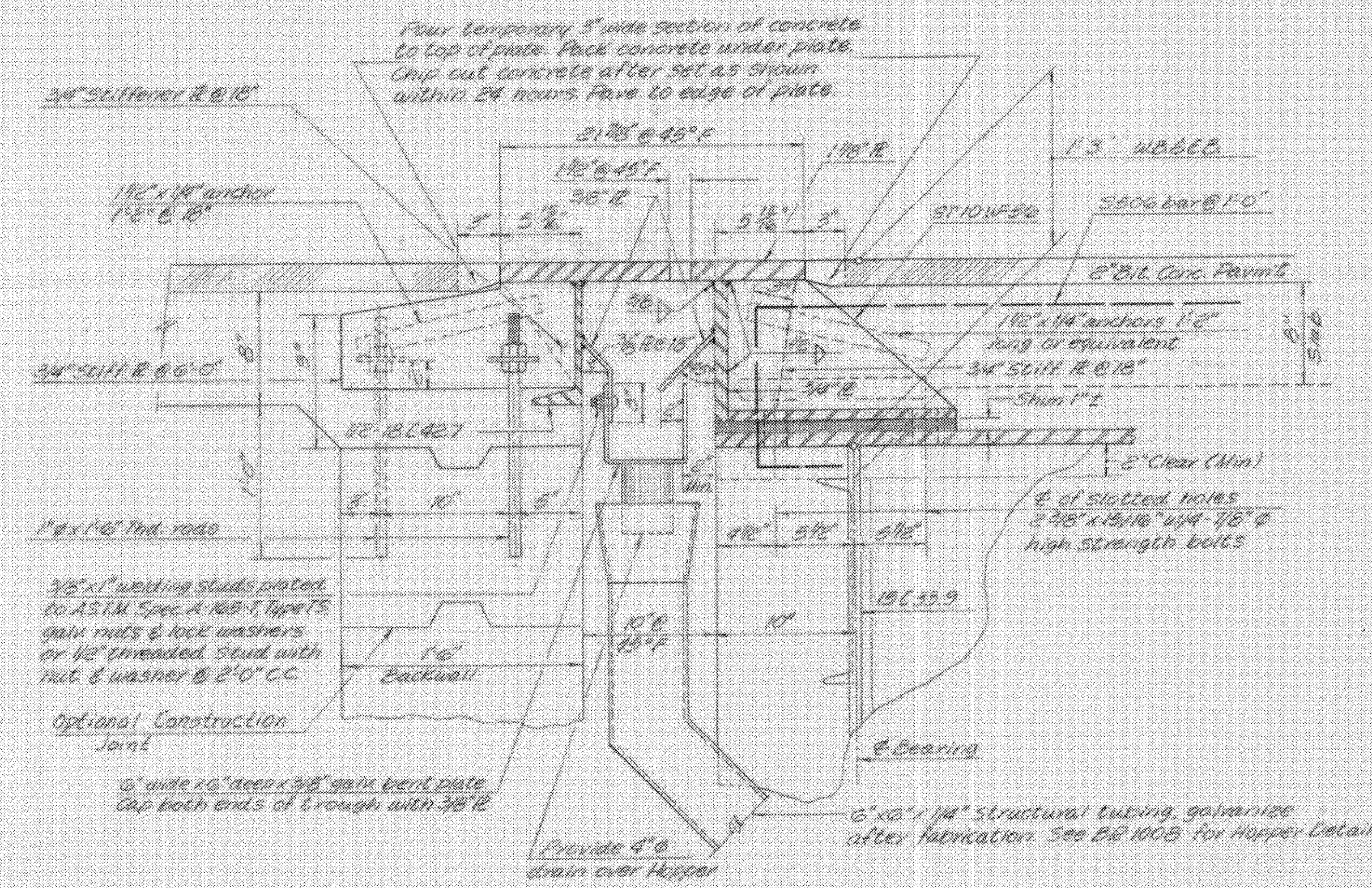
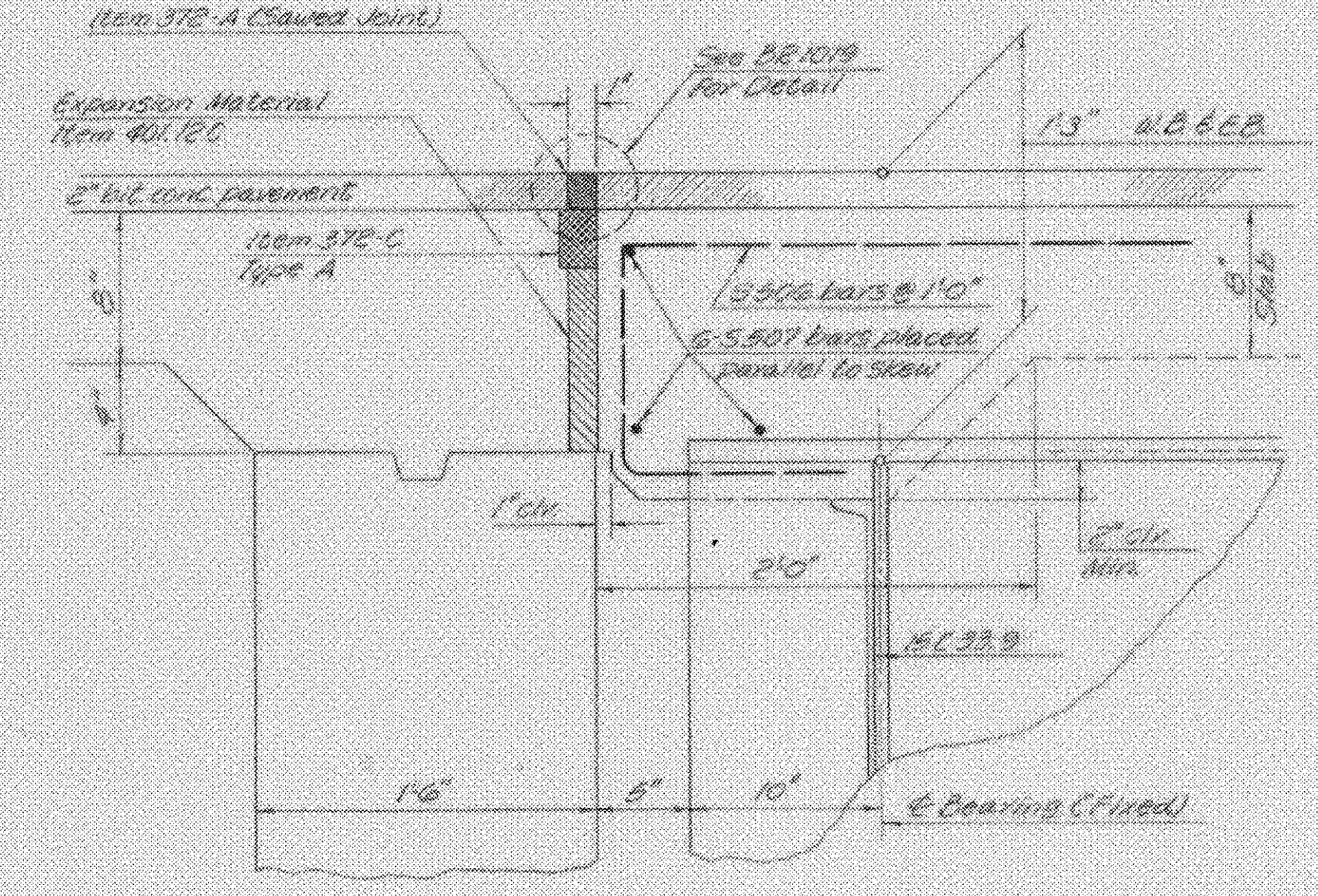


EXPANSION HINGE JOINT
No Scale

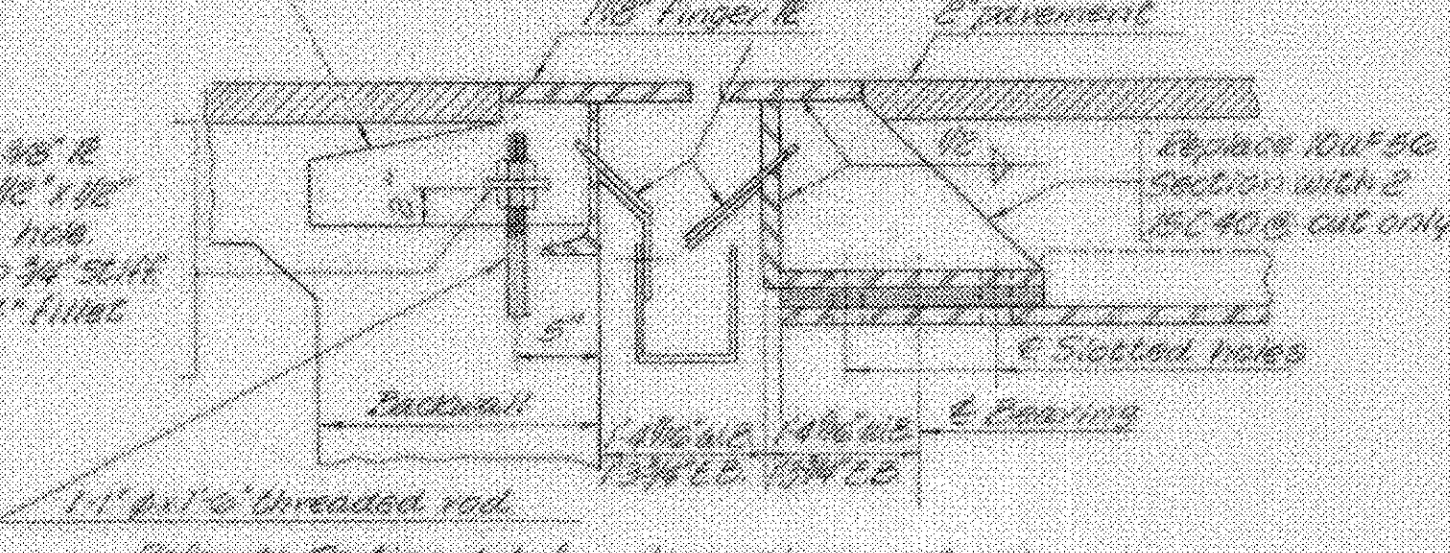


SECTION A-A
Scale: 1/16" = 1'-0"

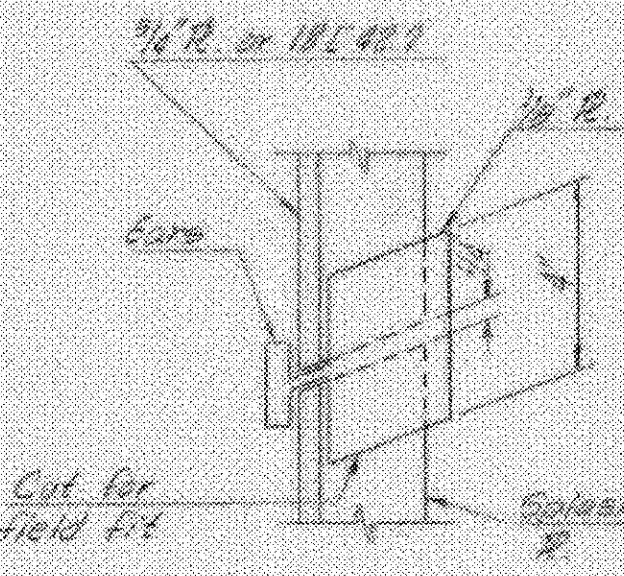
NOTE:
Use 1/4" weld for connecting splash plates as shown. There must be a 1" minimum left from the edge of the bolt hole to the edge of the plate where the trough is connected to the drip plate. All inaccessible areas exposed to the weather after installation shall be given 3 coats of paint prior to installation. Adjustment bolts to be used @ 6'-0" intervals.



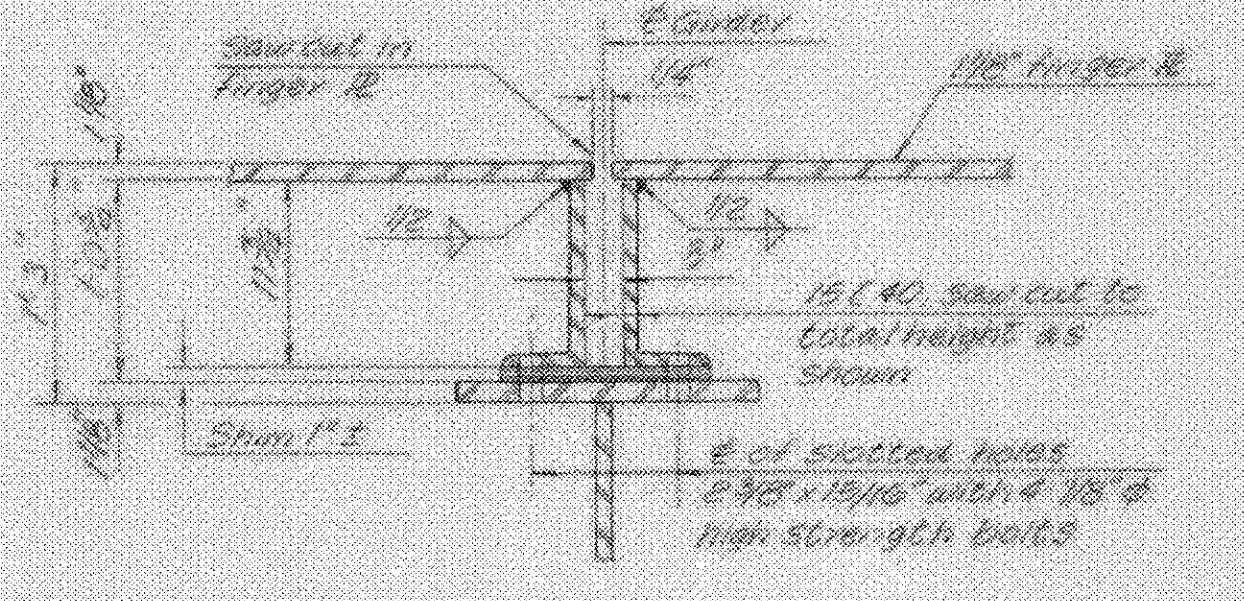
FIXED END JOINT DETAIL
Scale: 1/16" = 1'-0"



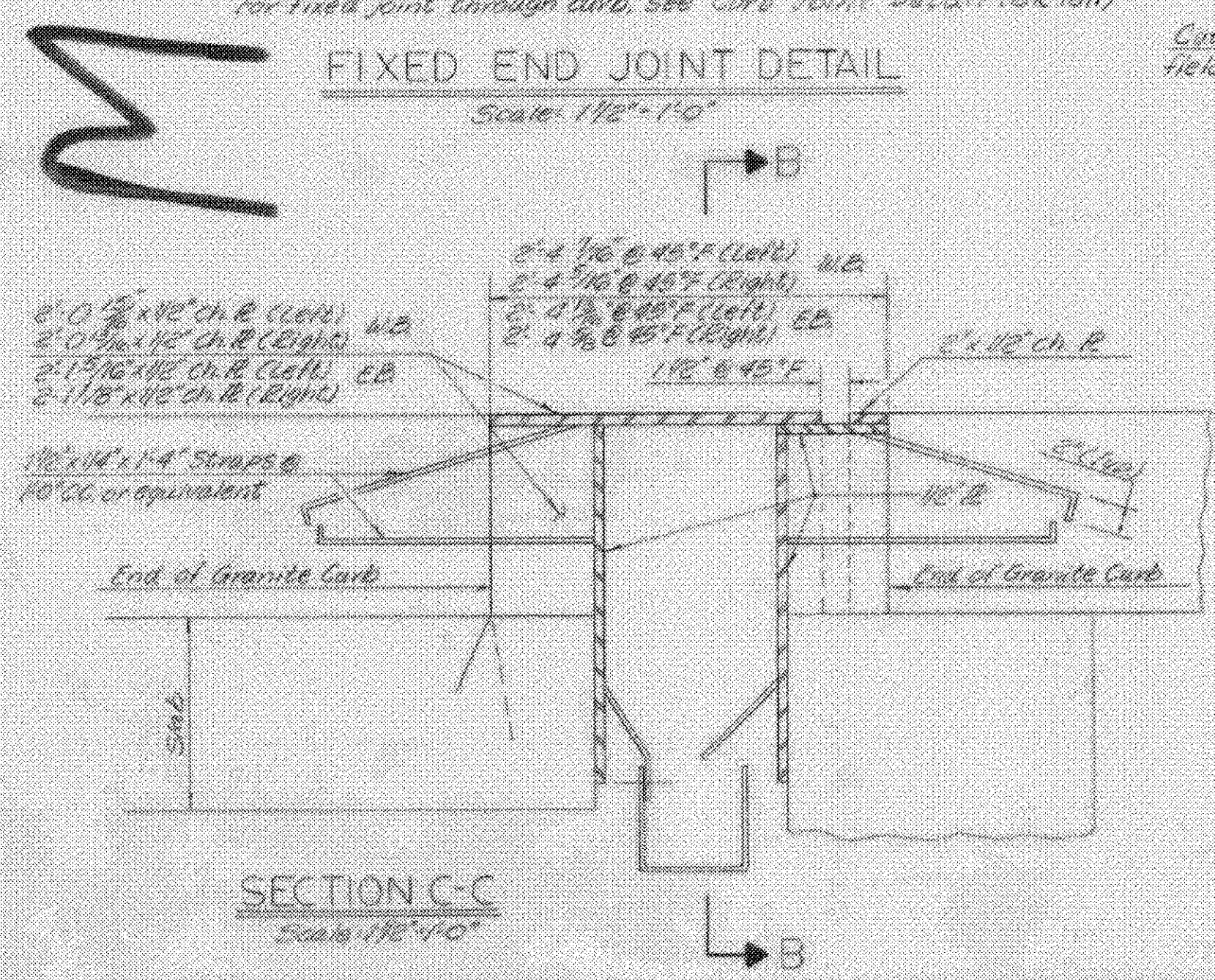
SECTION E-E
No Scale



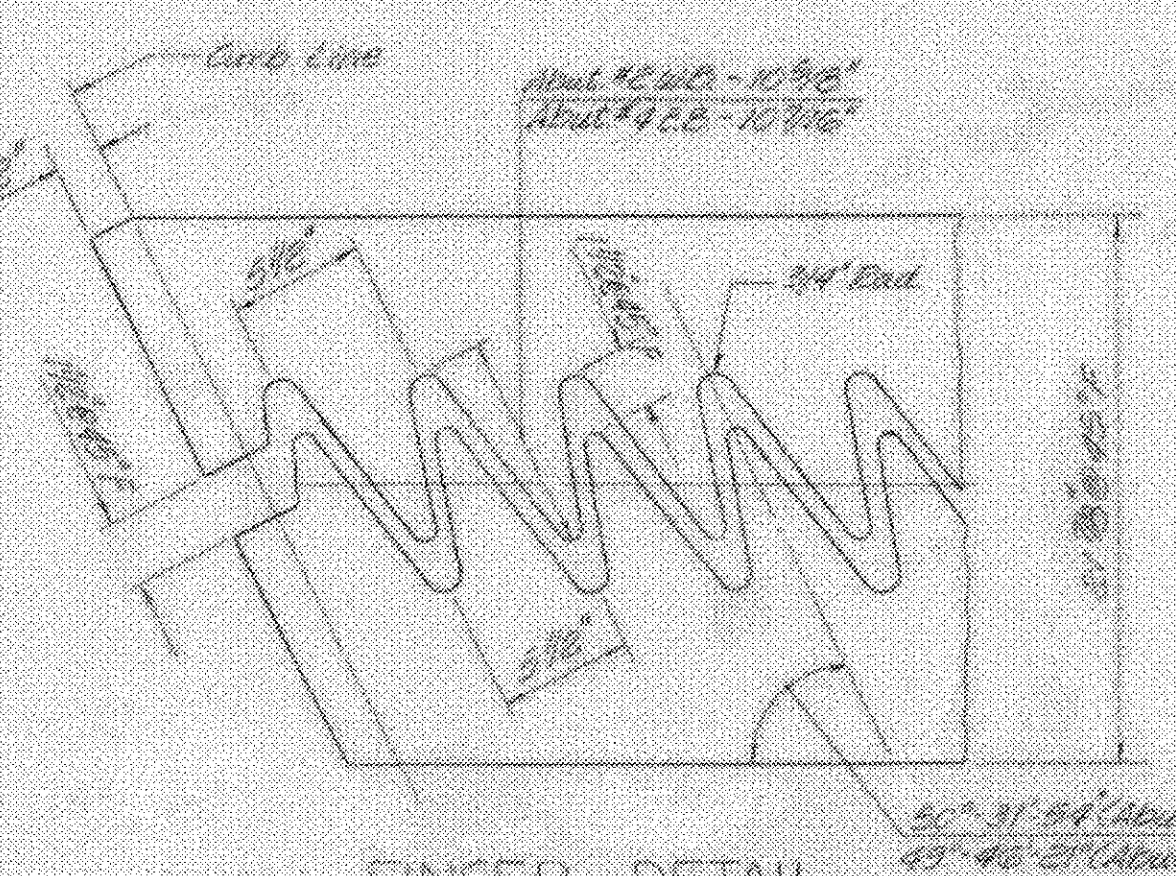
DETAIL A
No Scale



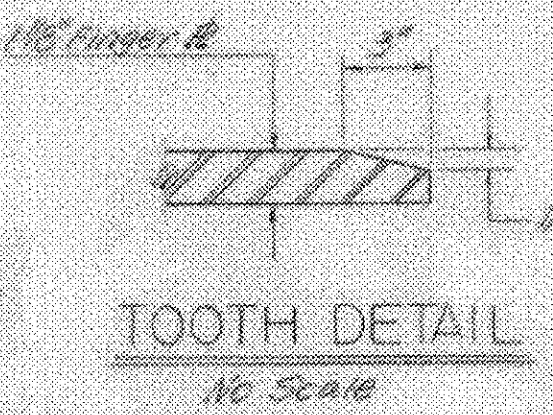
SECTION D-D
No Scale



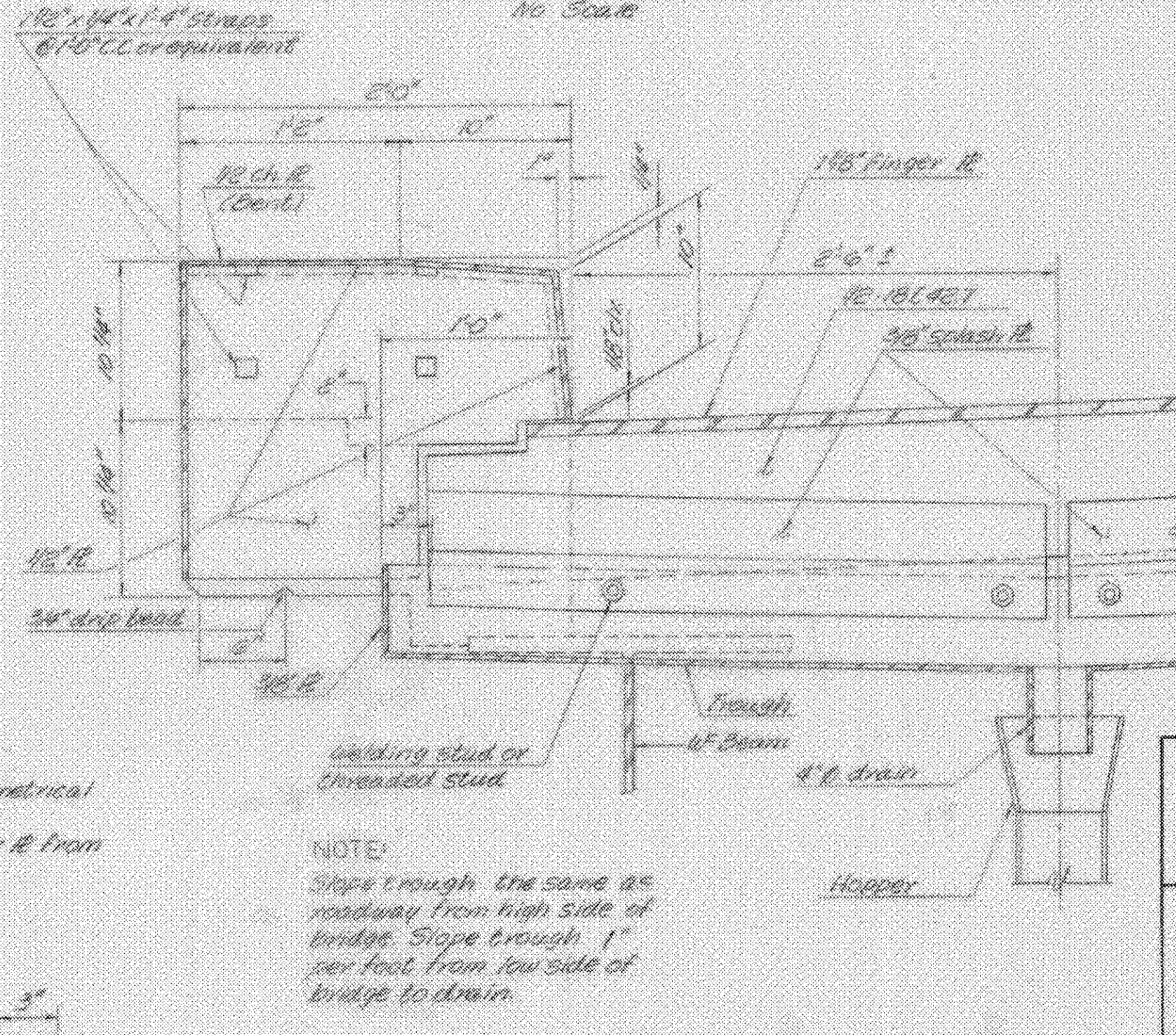
SECTION C-C
Scale: 1/16" = 1'-0"



FINGER DETAIL
No Scale



TOOTH DETAIL
No Scale



SECTION B-B
Scale: 1/16" = 1'-0"

- NOTES**
1. For General Notes, see BR 1001.
 2. Dimensions may vary as haunch is adjusted. Shim as required.
 3. Expansion dam shall conform to roadway crown.
 4. Three coats of paint shall be applied in accordance with Item 404.03 D to the interior surfaces of the expansion dam prior to construction.

**FAIR HAVEN - RUTLAND
BHF MEMB(2)
SHEET 22 OF 45
BRIDGE 10 E & W
FOR REFERENCE ONLY**

VERMONT STATE HIGHWAY DEPARTMENT TOWN OF CASTLETON U.S. ROUTE 4		
U.S. RTE. 4 RELOCATION OVER RTE. 30 RELOC.		
JOINT DETAILS		
McFARLAND-JOHNSON CONSULTING ENGINEERS BINGHAMTON, NEW YORK		
DESIGNED WDS	CHECKED R.E.C.	DATE 9-16-68
DRAWN L.A.S.	IN CHARGE H.G.C.	SCALE AS SHOWN
PROJECT NO. AP020(50) SH 161 OF 21		
CONTRACT NO. F (8) BR 1010		