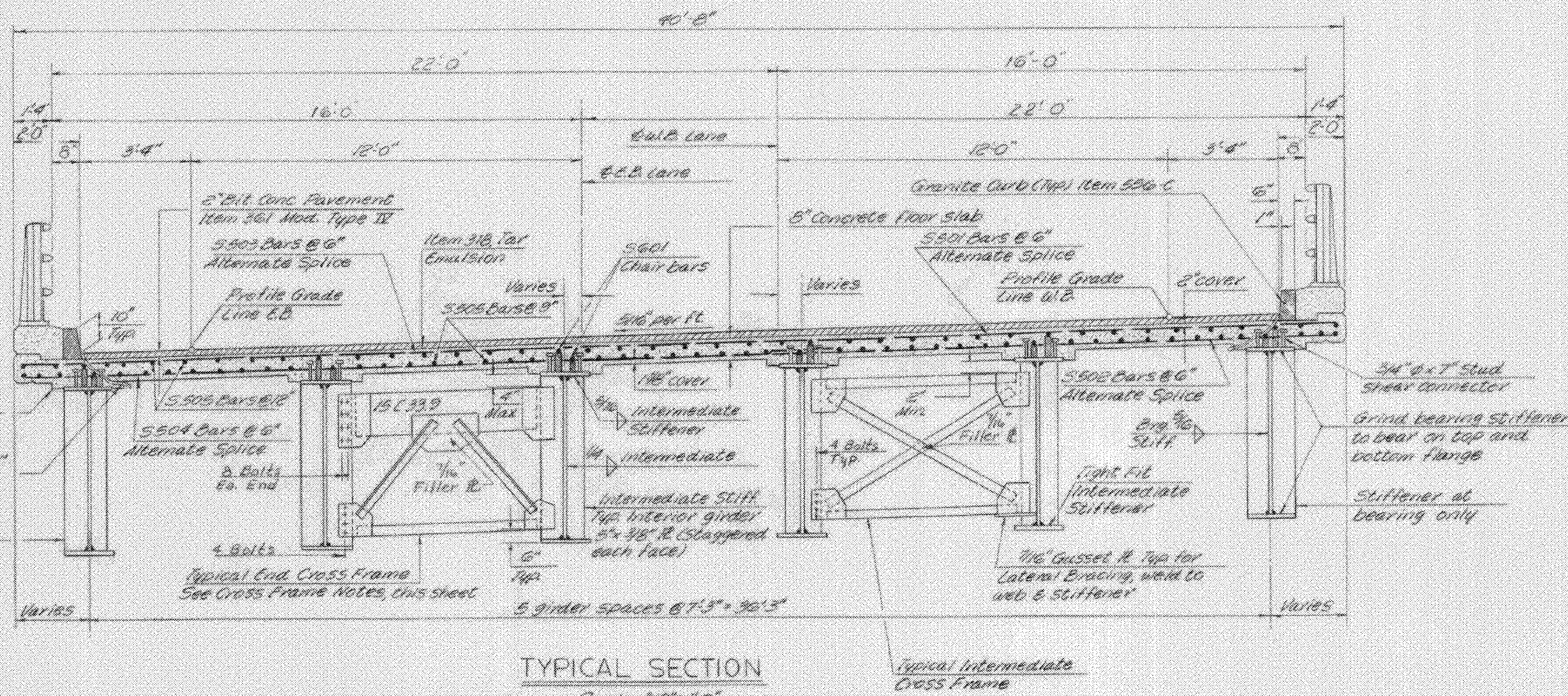
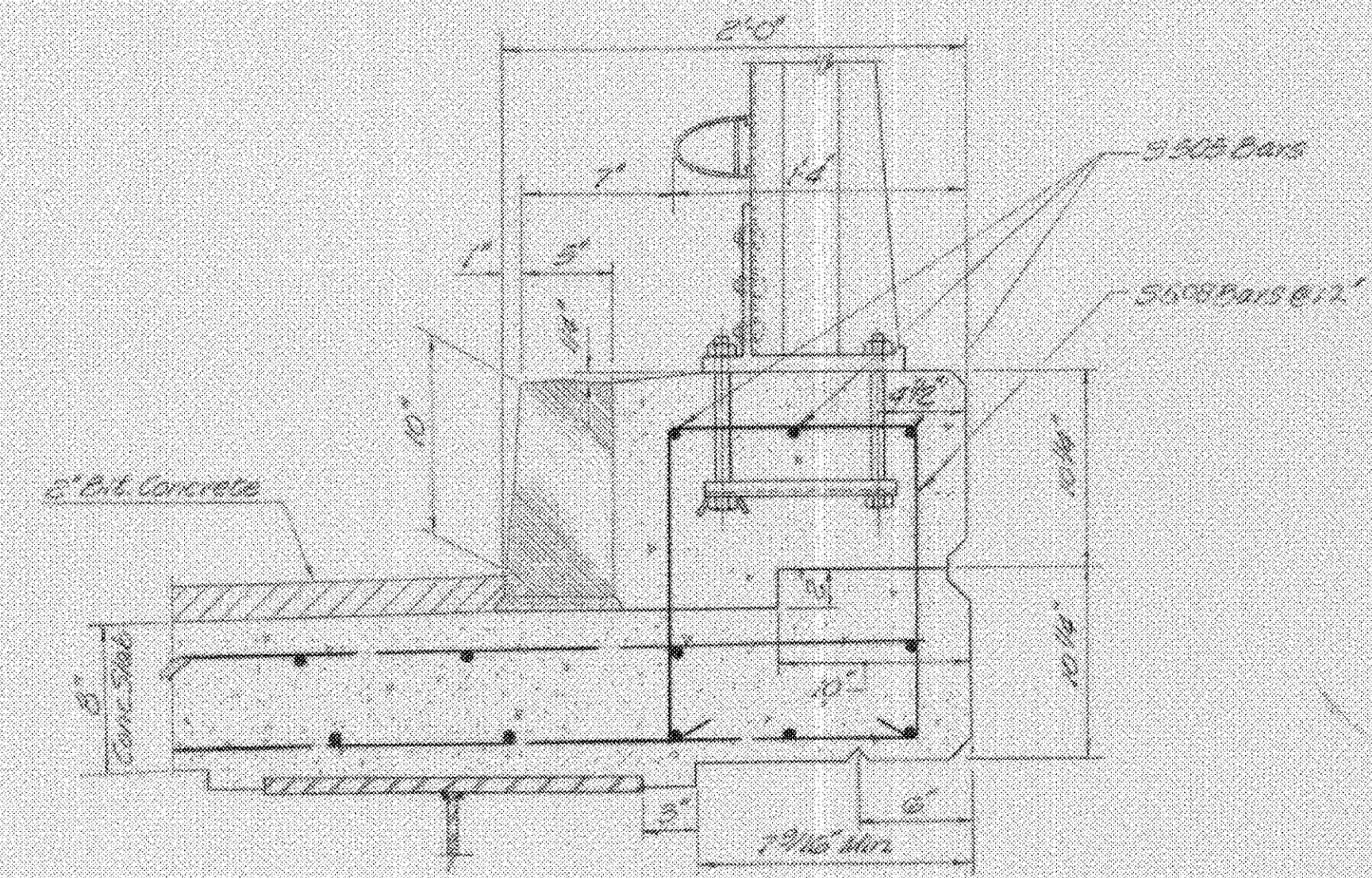


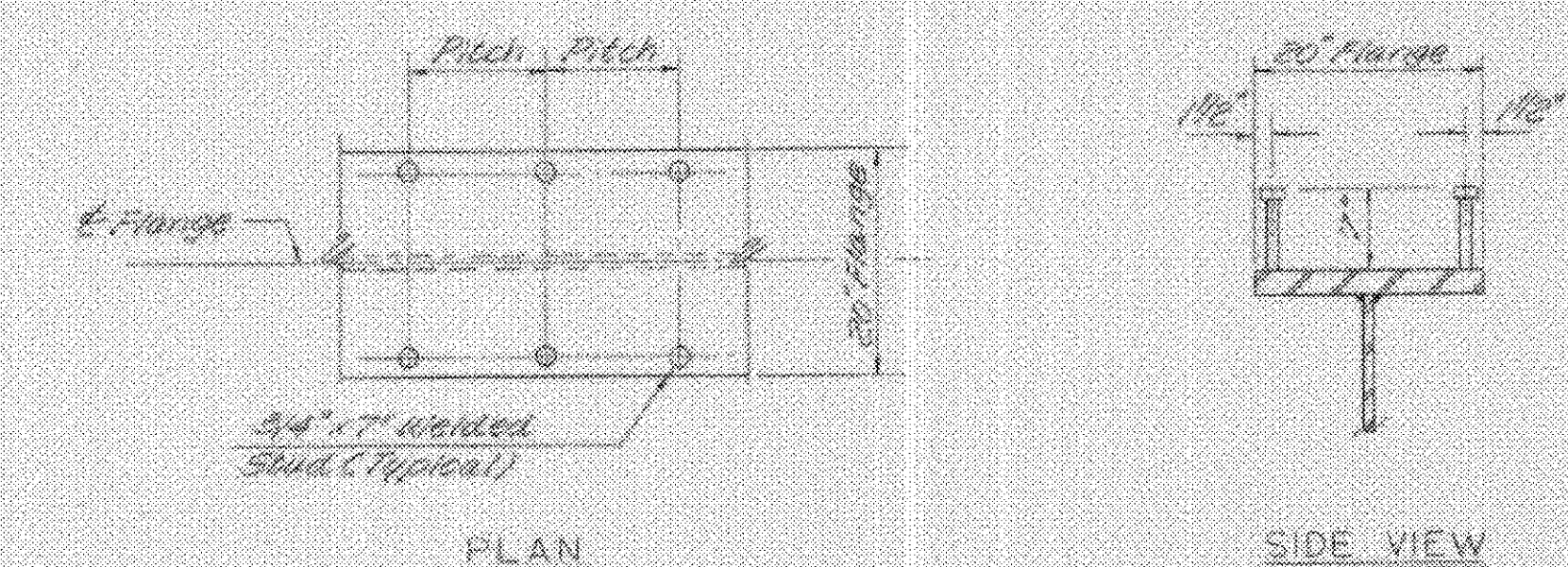
NOTE
The concrete floor slab surface shall be finished with a Self-propelled concrete finishing machine.



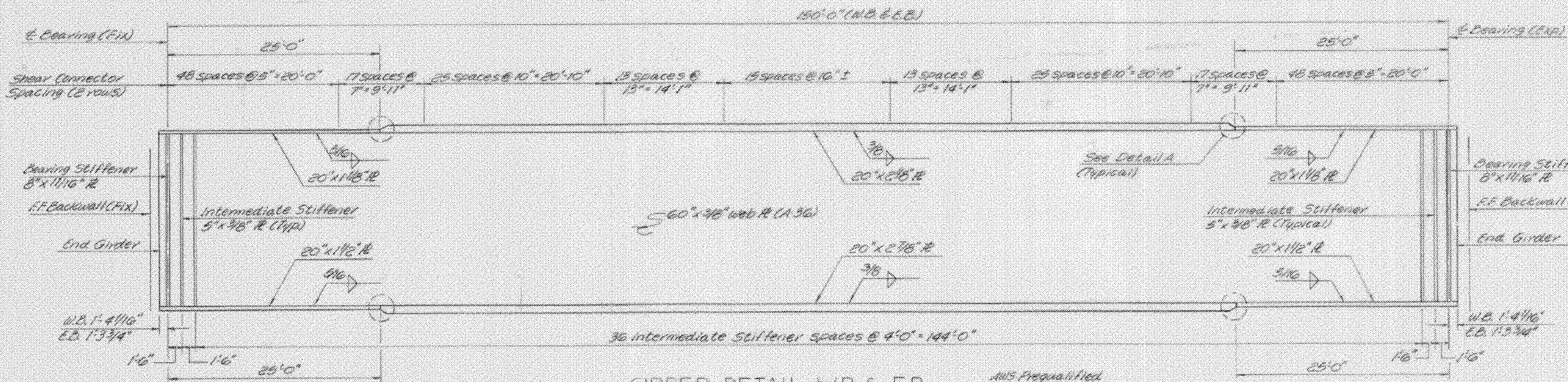
NOTE
5901, 5902, 5903 and 5904 bars shall be cut in the field to fit the skewed end. The cut-off bars shall be used at the opposite end.



TYPICAL CURB SECTION
Scale: 1 1/2" = 1'-0"



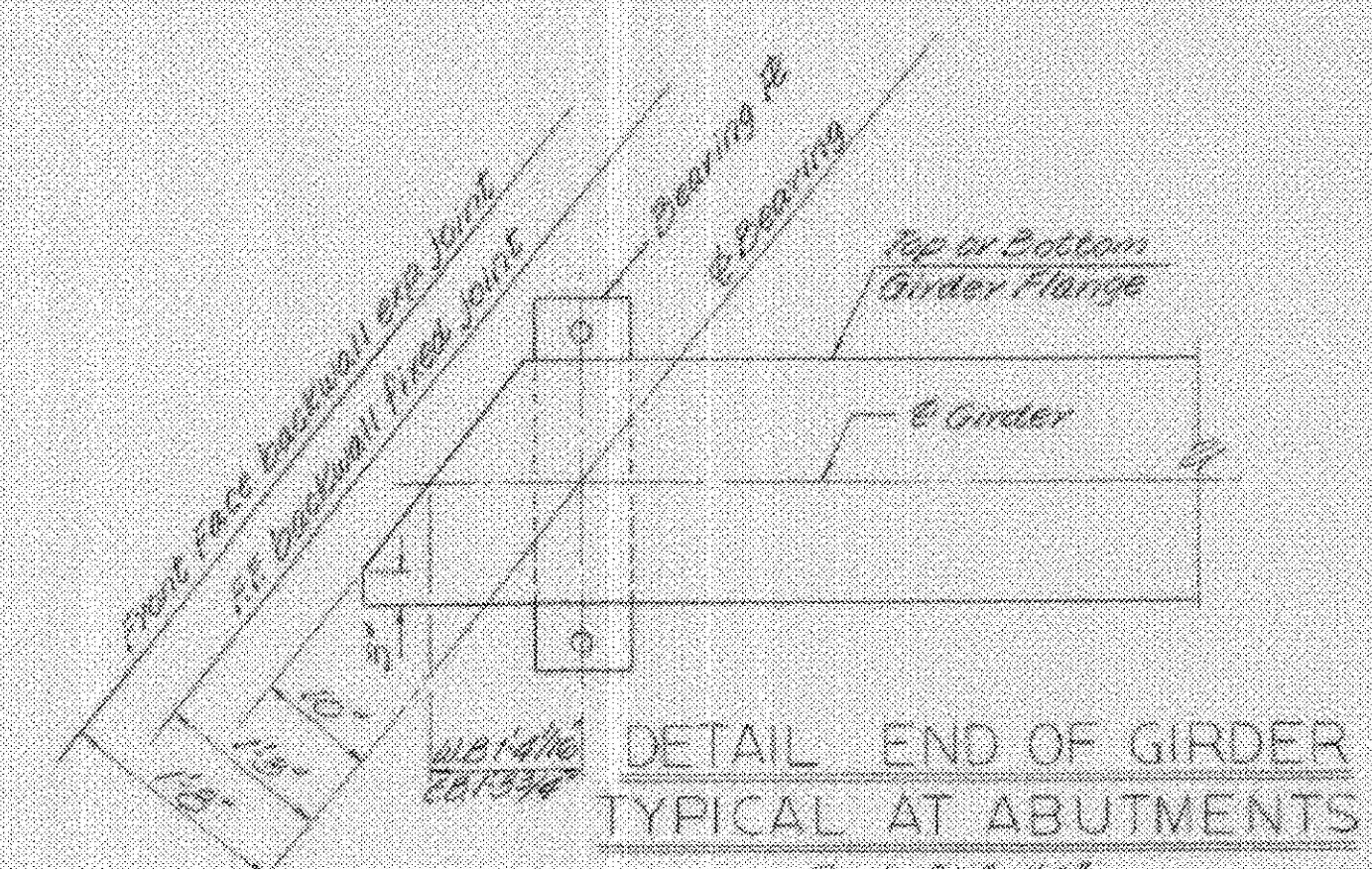
SHEAR CONNECTOR
Scale: 3/4" = 1'-0"



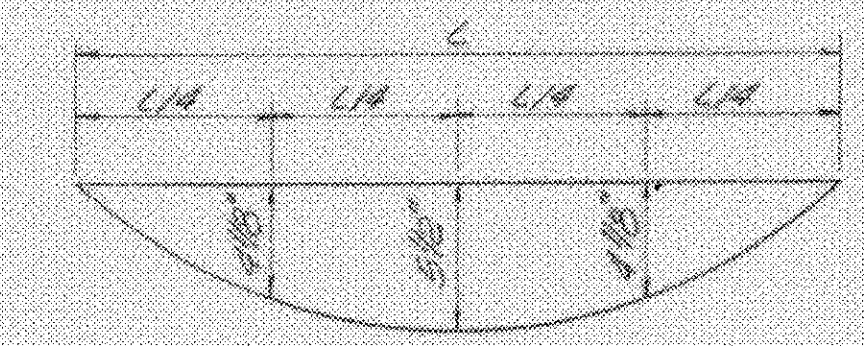
GIRDER DETAIL WB & EB
INTERIOR & FASCIA
Scale: Horiz. 1/8" = 1'-0", Vert. 1/2" = 1'-0"

NOTE
Intermediate stiffeners to be placed on inside face of fascia girders and on alternate faces of interior girders. Intermediate stiffeners to be welded to top flange and web. Bearing stiffeners to be welded to web only.

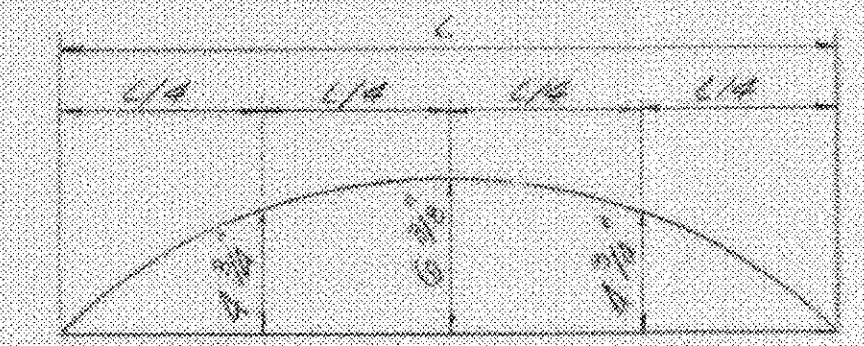
- NOTES:
- For General Notes, see BR100.
 - For Bearing Device Details, see BR 100A.
 - For Beam Haunch Details, see SCE 02-67.
 - The shear connectors are designed to be 3/4" x 7" studs. If 7/8" studs are used, increase the spacing shown for 3/4" studs by 50%.
 - CROSS FRAME NOTES: All gusset and connection plates shall be 7/16" plates. Gusset and connection plates shall be welded to stiffeners with a 5/16" fillet weld. All angles shall be 4" x 4" x 3/8" L's.
 - All shop connections for cross-frames shall be 5/16" fillet welds. All field connections shall be 1/8" high strength bolts meeting the requirements of ASTM A-325.



DETAIL END OF GIRDER
TYPICAL AT ABUTMENTS

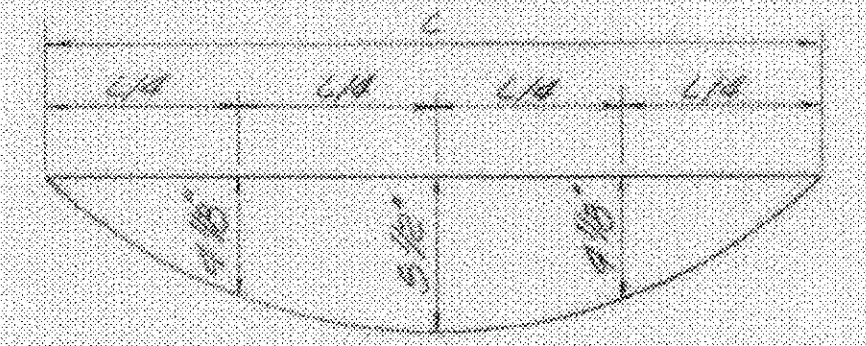


DEAD LOAD DEFLECTION DIAGRAM

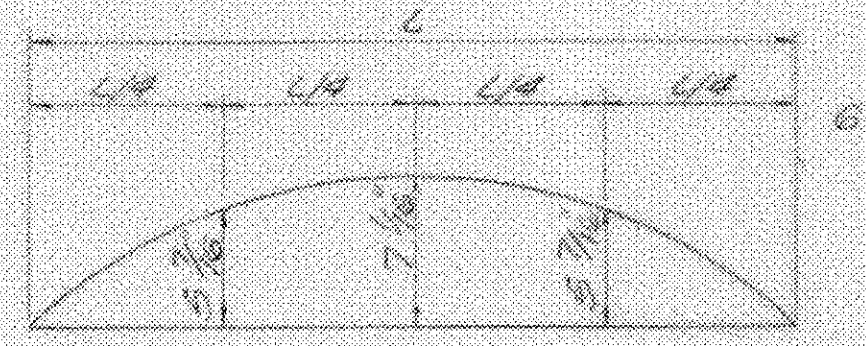


CAMBER DIAGRAM

WESTBOUND BRIDGE
No Scale



DEAD LOAD DEFLECTION DIAGRAM



CAMBER DIAGRAM

EASTBOUND BRIDGE
No Scale

Max Live Load Deflection = 1 7/16"

REVISION
DELETED OPTIONAL GIRDER SPICE
ADDED FILLER PLATES
DATE 5-21-69
BY HGC
PROJECT NO. 1020(150) SH 158 OF 21
DATE 9-2-69

FAIR HAVEN - RUTLAND
BHF MEMB(2)
SHEET 21 OF 45
BRIDGE 10 E & W
FOR REFERENCE ONLY

STA TO

U.S. RTE. 4 RELOCATION
OVER RTE. 30 RELOC.
SUPERSTRUCTURE DETAILS

McFARLAND-JOHNSON
CONSULTING ENGINEERS
BINGHAMTON, NEW YORK

DESIGNED WDS	CHECKED REC	DATE 9-16-68
DRAWN LRS	IN CHARGE HGC	SCALE AS SHOWN

PROJECT NO. 1020(150) SH 158 OF 21

CONTRACT NO. F (B) BR 1007