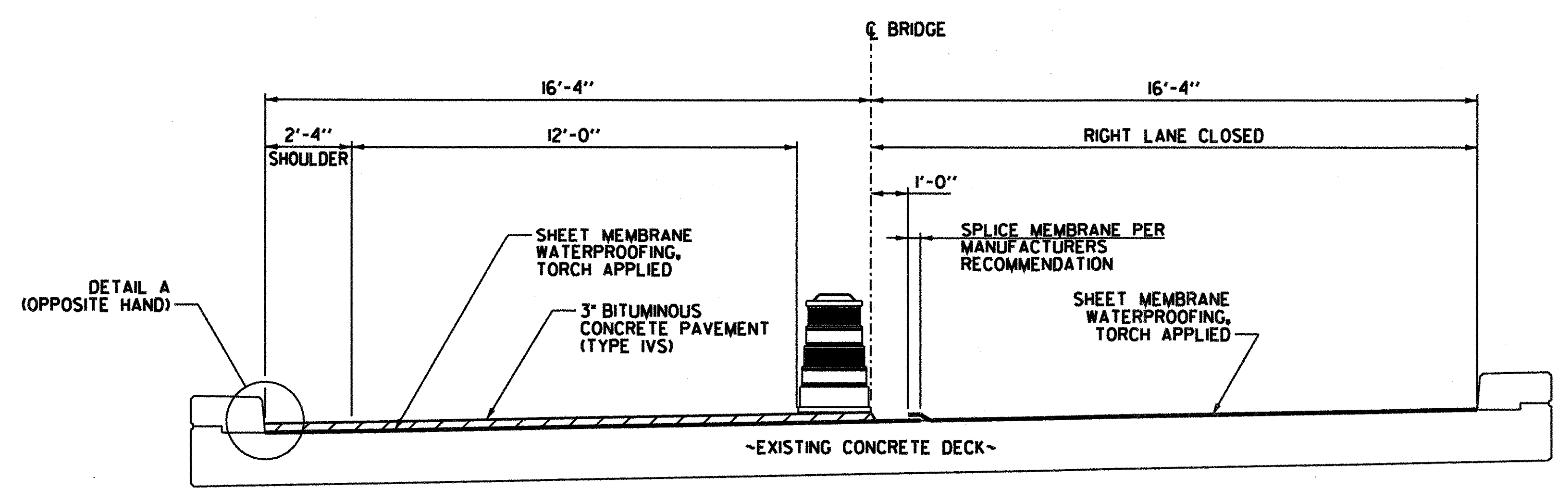


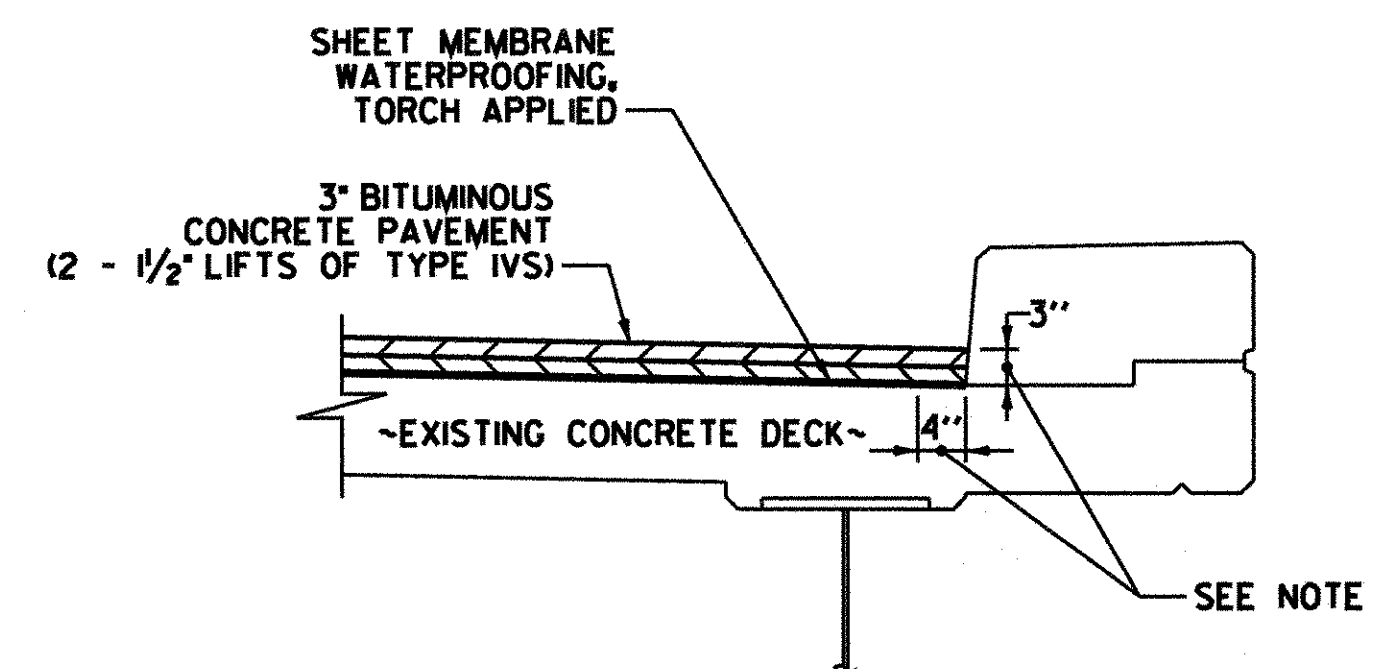
NOTE: LEFT LANE CLOSURE AND LEFT SIDE MEMBRANE SPLICE SHOWN, RIGHT LANE CLOSURE AND RIGHT SIDE MEMBRANE SPLICE SIMILAR. CONTRACTOR TO DETERMINE WHICH LANE THE MEMBRANE SPLICE SHALL OCCUR IN UNLESS THE BRIDGE IS SUPERELEVATED. BRIDGES WITH SUPERELEVATION SHALL HAVE THE MEMBRANE PLACED AS SHOWN ON THE VT ROUTE 4A AND 915 DETAIL.

MEMBRANE SPLICE DETAIL U.S. ROUTE 4
NOT TO SCALE



NOTE: RIGHT LANE CLOSURE AND RIGHT SIDE MEMBRANE SPLICE SHOWN, LEFT LANE CLOSURE AND LEFT SIDE MEMBRANE SPLICE SIMILAR. PLACEMENT OF THE MEMBRANE SHALL START AT THE LOWSIDE OF THE BRIDGE. THE SPLICE SHALL BE AS SHOWN ABOVE, WITH THE HIGH SIDE OVERLAPPING THE LOW SIDE.

MEMBRANE SPLICE DETAIL VT ROUTE 4A AND 915
NOT TO SCALE



- DETAIL A NOTES:**
- INDICATES AREA ALONG DECK AND UP FACE OF CURB FOR PLACEMENT OF TWO COATS OF POLYURETHANE MEMBRANE.
 - POLYURETHANE MEMBRANE AND BLAST CLEANING SHALL BE INCLUDED IN THE UNIT PRICE BID FOR SHEET MEMBRANE WATERPROOFING, TORCH APPLIED.
 - SHEET MEMBRANE WATERPROOFING SHALL EXTEND TO FACE OF CURB AS SHOWN.
 - IN ADDITION TO THE REQUIREMENTS OF SUBSECTION 519.04, BLAST CLEAN 3" UP THE FACE OF CURB PRIOR TO PLACING THE MEMBRANE.

DETAIL A
NOT TO SCALE

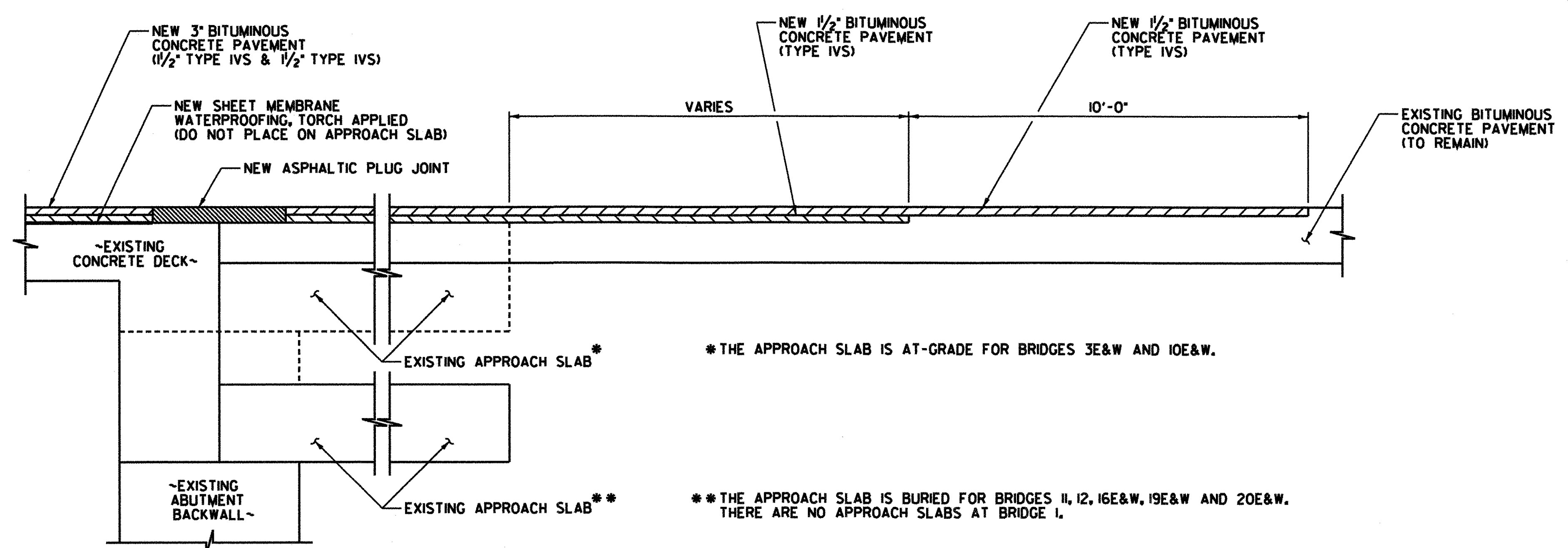
ASPHALTIC PLUG JOINT REPLACEMENT SCHEDULE

BRIDGE NO.	ABUT. 1A	ABUT. 1	ABUT. 2	ABUT. 2A
10 EAST	--	--	--	48 FT
10 WEST	47 FT	47 FT	--	47 FT
*16 EAST	--	37 FT	37 FT	--
*16 WEST	--	37 FT	--	--
*19 EAST	--	--	43 FT	--
*19 WEST	--	--	43 FT	--
** I	--	36 FT	36 FT	--
* II	--	40 FT	40 FT	--
* 12	--	38 FT	38 FT	--

* - BURIED APPROACH SLAB, GALVANIZED STEEL PLATE NOT REQUIRED.
** - NO APPROACH SLAB, GALVANIZED STEEL PLATE NOT REQUIRED. (SEE ASPHALTIC PLUG-TYPE JOINT DETAIL ON SHEET 10).

BRIDGE LENGTH AND WIDTH (CURB TO CURB)

	WIDTH (CURB TO CURB) (FEET)	LENGTH (FEET)
3 EAST	42.67	243.34
3 WEST	42.67	243.34
10 EAST	36.67	233.46
10 WEST	36.67	233.46
16 EAST	36.67	165.50
16 WEST	36.67	165.50
19 EAST	36.67	207.04
19 WEST	36.67	247.04
20 EAST	36.67	364.50
20 WEST	36.67	364.50
I	34.83	69.00
II	32.67	62.45
12	32.67	46.19



TYPICAL APPROACH SECTION
NOT TO SCALE



PROJECT NAME: FAIR HAVEN - RUTLAND
PROJECT NUMBER: BHF MEMB(2)
FILE NAME: ...drawing\09-Bit Conc Dets.dgn PLOT DATE: 8/8/2008
PROJECT LEADER: G. BOGUE DRAWN BY: J. SOTER
DESIGNED BY: S. BURBANK CHECKED BY: G. BOGUE
BITUMINOUS CONCRETE DETAILS SHEET 9 OF 45