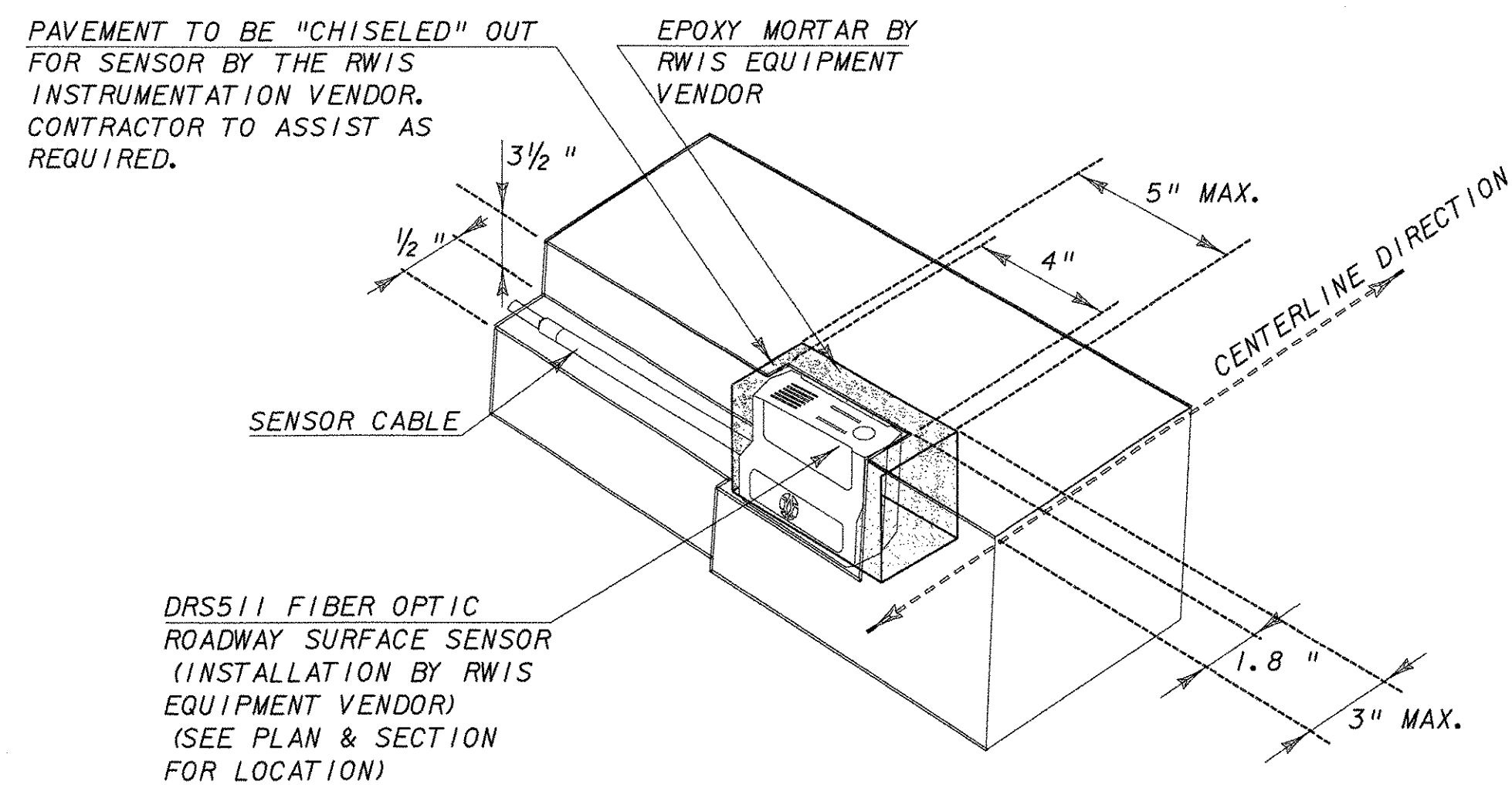
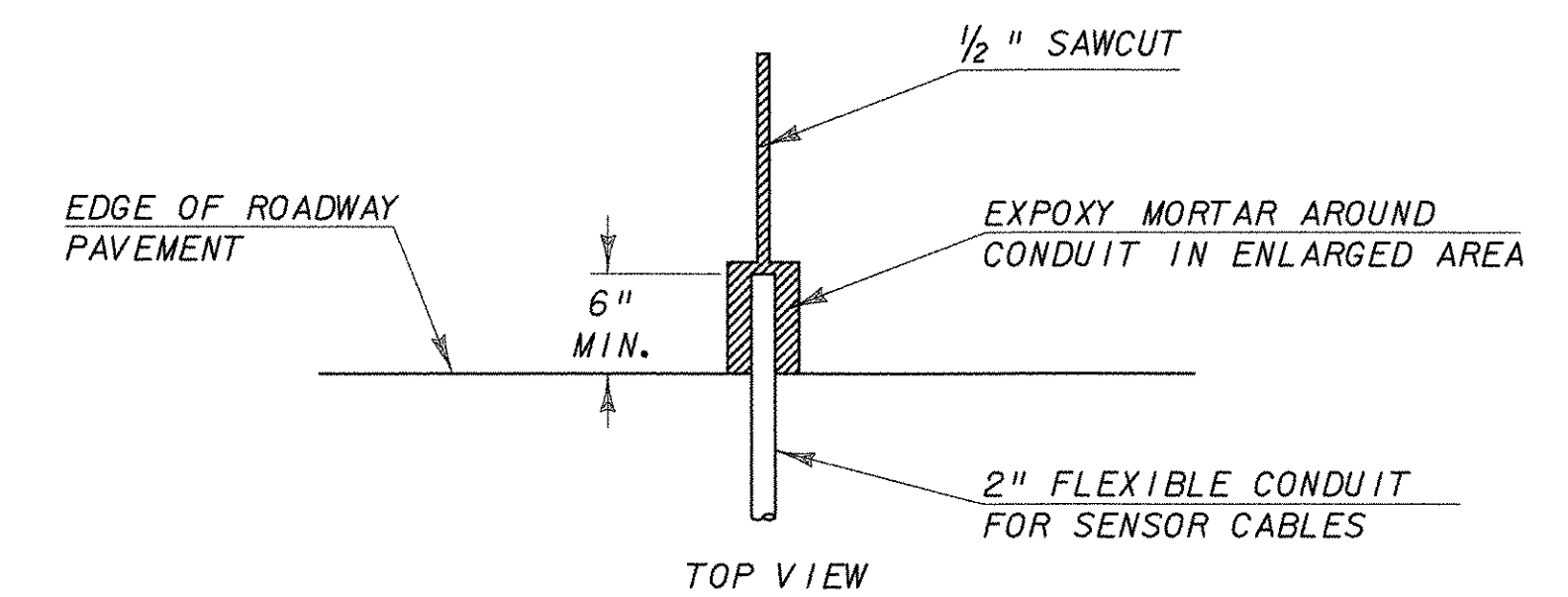
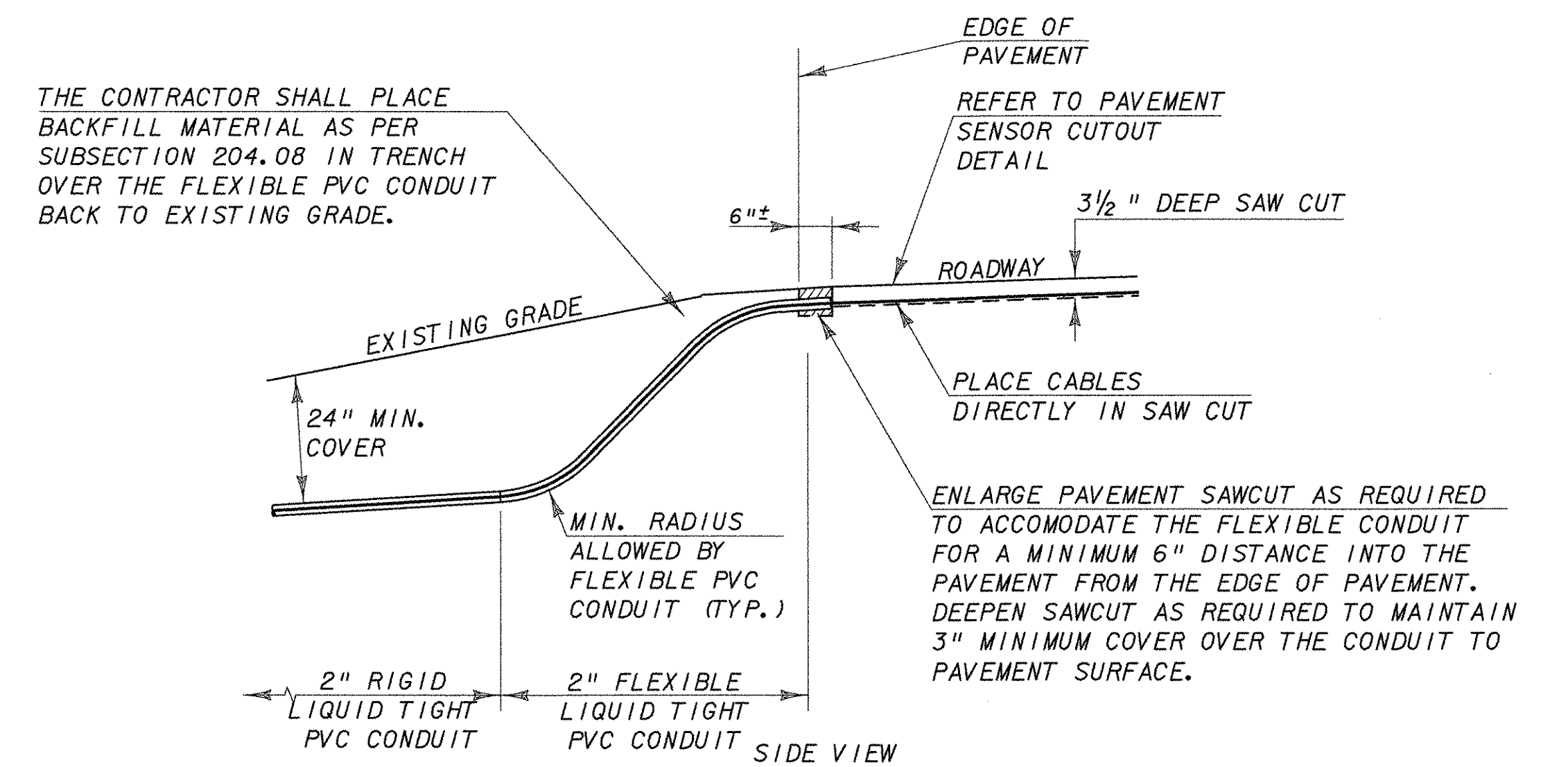


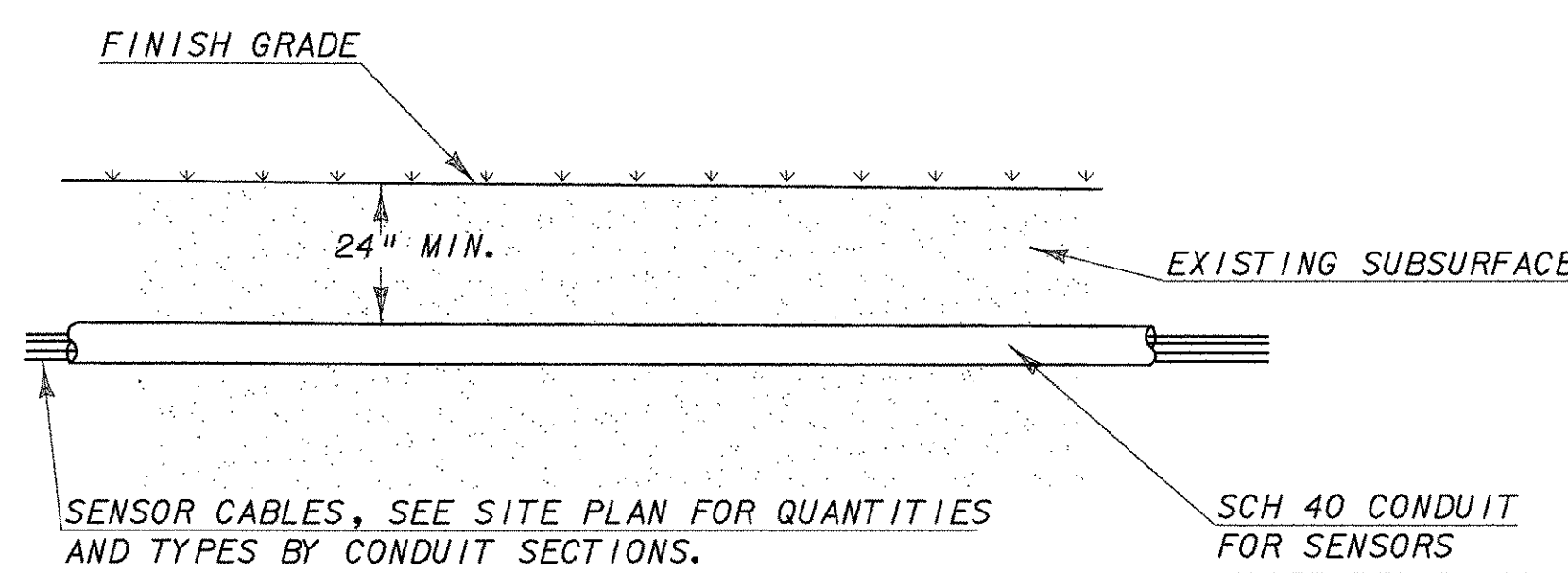
TYPICAL TRENCH SECTION - CONDUIT
N.T.S.



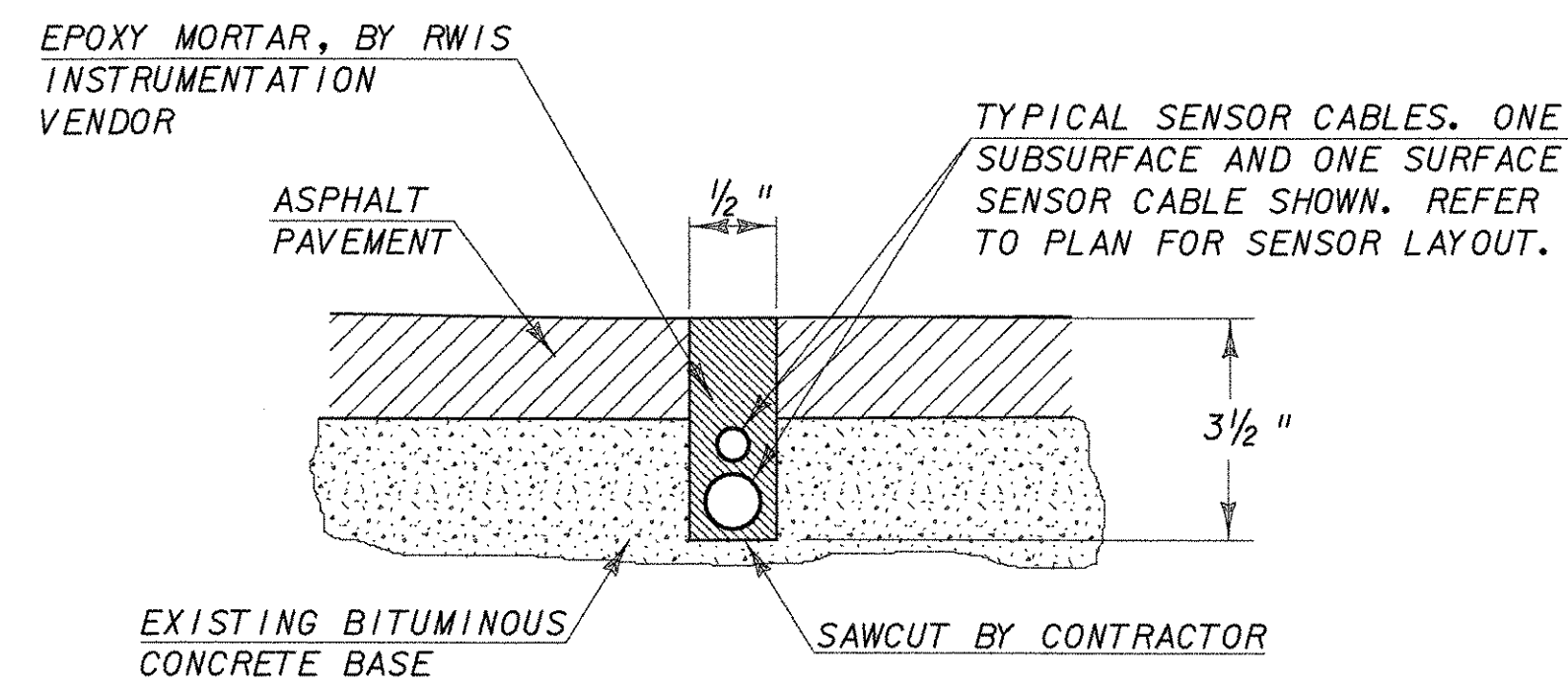
PAVEMENT SENSOR CUTOUT DETAIL
(DETAIL COURTESY OF VAISALA CORPORATION)
N.T.S.



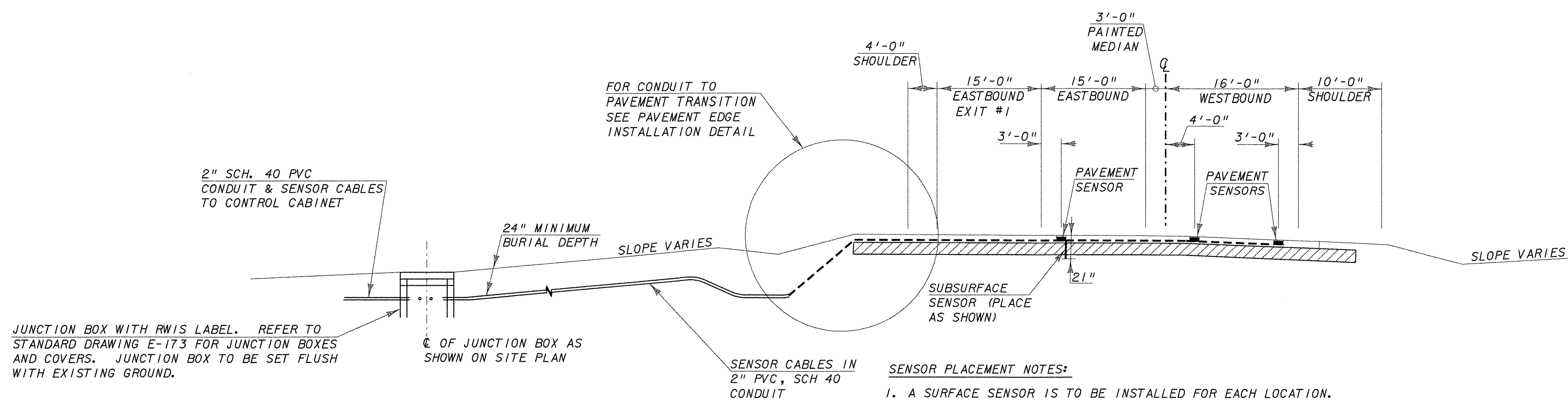
PAVEMENT EDGE INSTALLATION DETAIL
N.T.S.



CONDUIT DETAIL
(FOR INSTALLATION NOT UNDER PAVEMENT)
N.T.S.



ASPHALT PAVEMENT SAW CUT DETAIL
N.T.S.



- SENSOR PLACEMENT NOTES:
1. A SURFACE SENSOR IS TO BE INSTALLED FOR EACH LOCATION.
 2. A SUBSURFACE SENSOR IS TO BE INSTALLED AT THE EASTBOUND SENSOR LOCATION ONLY.

- NOTE:
1. ANY DETAILS FOR INSTALLATION OF THE SENSORS NOT SHOWN ON THIS DRAWING SHALL BE AS PER STANDARD DRAWING E-172.
 2. CONTRACTOR TO BE RESPONSIBLE FOR SAWCUTTING FOR SENSOR PLACEMENT, AS WELL AS PROVIDING PULL STRING IN CONDUIT, CLEANING AND DRYING OF THE SAWCUT AND ASSISTANCE AS NECESSARY FOR PULLING OF SENSOR CABLES. PAVEMENT PREPARATION (I.E. "CHISELING"), RWIS SENSOR PLACEMENT, EPOXY MORTAR PLACEMENT, SENSOR CABLE PULLING AND CABLE CONNECTIONS AT THE CONTROLS TO BE PERFORMED BY THE RWIS EQUIPMENT VENDOR.

NOTE:
DO NOT CUT SENSOR CABLE. ANY EXCESS CABLE SHALL BE COILED AND STORED IN THE JUNCTION BOX.

EXISTING TYPICAL SECTION FOR ROADWAY INSTALLATION
N.T.S.

FAIR HAVEN

PROJECT: FAIR HAVEN: RWIS
MENDON: RWIS

FILE NAME: 010001de1.dgn PLOT DATE: 10-AUG-2007
PROJECT LEADER: D. GRAHAVOC DRAWN BY: MAL
DESIGNED BY: BMB CHECKED BY: MDL
RWIS INSTALLATION DETAILS SHEET 8 OF 12