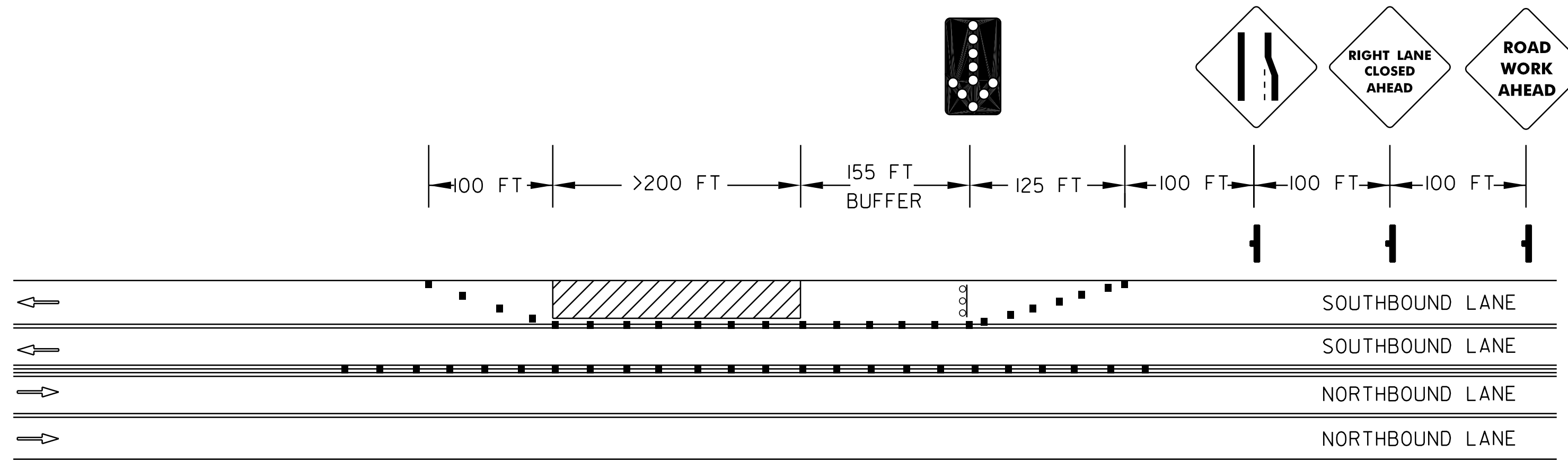
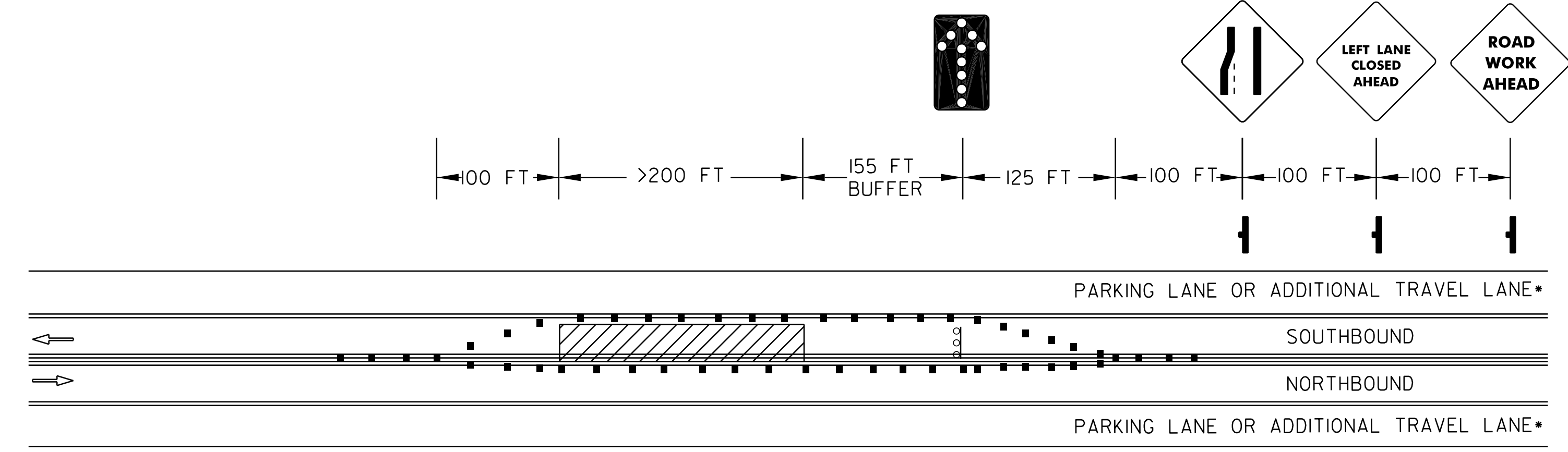


**TRAFFIC CONTROL DETAILS FOR USE WITH  
CONCRETE JOINT REPAIR AND COLD PLANE/BITUMINOUS OVERLAY AREAS**

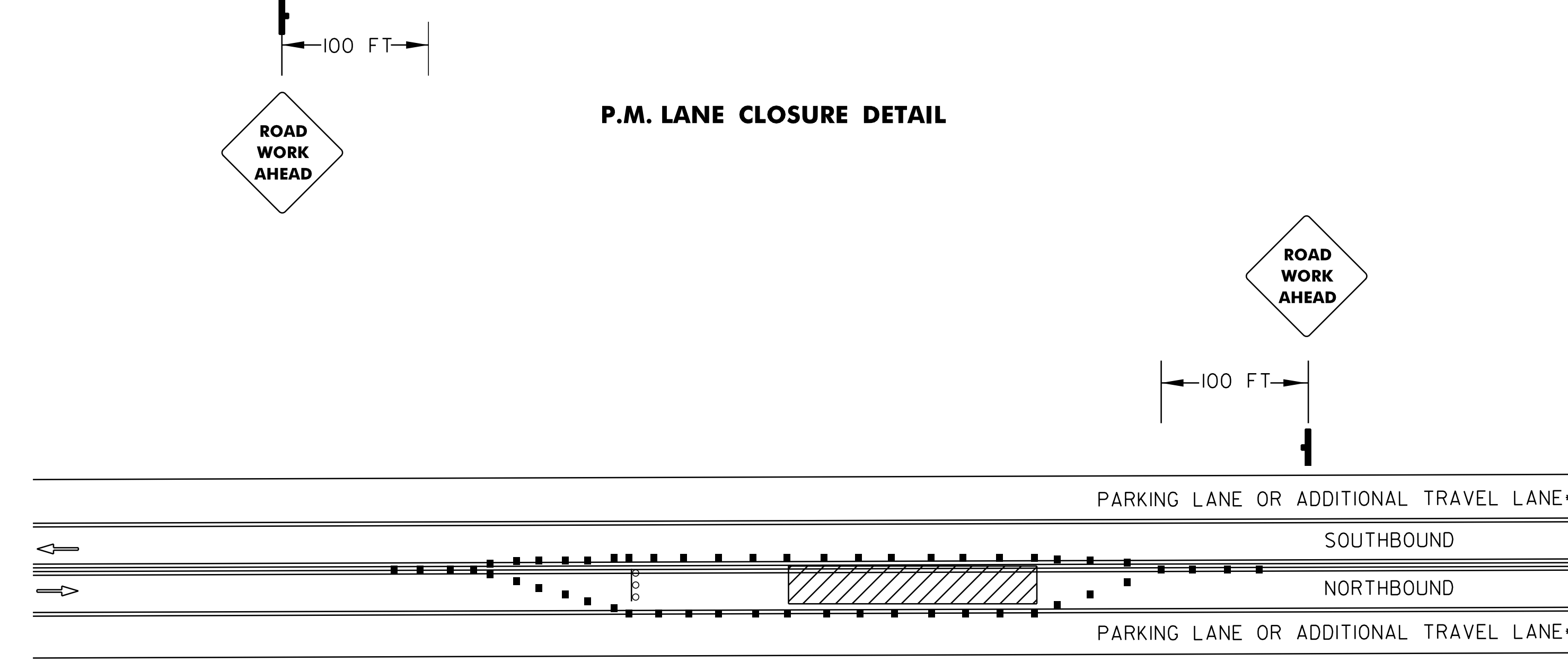


**P.M. LANE CLOSURE DETAIL**



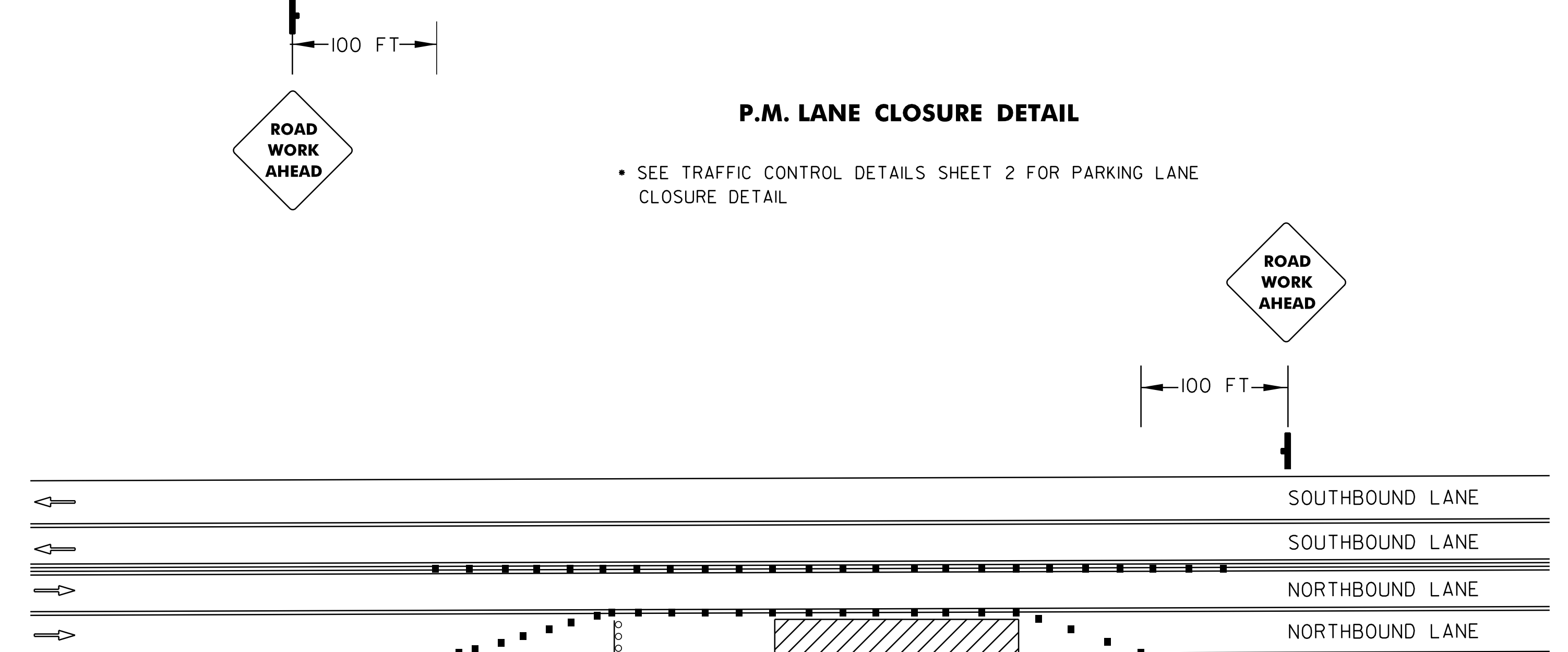
**P.M. LANE CLOSURE DETAIL**

• SEE TRAFFIC CONTROL DETAILS SHEET 2 FOR PARKING LANE CLOSURE DETAIL



**A.M. LANE CLOSURE DETAIL**

• SEE TRAFFIC CONTROL DETAILS SHEET 2 FOR PARKING LANE CLOSURE DETAIL



**A.M. LANE CLOSURE DETAIL**

**NOTES:**

1. THE DETAILS SHOWN ON THIS SHEET REFLECT THE TRAVEL DIRECTIONS ON U.S. ROUTE 7. THESE TYPICAL LANE CLOSURE DETAILS APPLY FOR THE ROUTE 15 SEGMENT ALSO, WHERE MULTIPLE LANES EXIST. FOR VT ROUTE 15, SUBSTITUTE "EASTBOUND" FOR "NORTHBOUND" AND "WESTBOUND" FOR "SOUTHBOUND".
2. IN THE AREAS WHERE THERE IS MORE WIDTH THAN THE 4 LANES SHOWN HERE, DUE TO AN ADDITIONAL LANE OR EXISTING PARKING SPACES, THE ADDITIONAL WIDTH MAY BE USED TO FURTHER ENHANCE TRAFFIC FLOW AS DIRECTED BY THE RESIDENT ENGINEER.
3. FOR DETAILS OF THE SIGNS SHOWN, SEE THE VTRANS STANDARDS FOR CONSTRUCTION SIGN DETAILS.
4. IF NIGHT OPERATIONS ARE UTILIZED, LANE CLOSURE LOCATIONS TO BE DETERMINED BY THE RESIDENT ENGINEER AND NOT BY AM OR PM CONSTRUCTION TIME.

**LEGEND**

- TRAFFIC FLOW
- ARROW PANEL
- ARROW PANEL SUPPORT OR TRAILER
- CHANNELIZING DEVICE
- SIGN (SHOWN FACING LEFT)
- WORK SPACE

**DETAILS ARE NOT TO SCALE**

<b>TRAFFIC CONTROL DETAILS SHEET 1</b>	PROJECT NAME: WINOOSKI	PLOT DATE: 31-OCT-2011 16:47
	PROJECT NUMBER: STP 2617(1)S	DRAWN BY: SJL
	FILE NAME: 06d064.dgn	CHECKED BY: EPD
	PROJECT LEADER: CDL	SHEET 86 OF 88
	DESIGNED BY: SJL	
	PLOT FILE: 06D064.86.i	