

~~676.10 DELINEATOR WITH STEEL POST~~
~~STA. 17+42 RT~~
~~STA. 20+05 RT~~ NOT INSTALLED

203.16 SOLID ROCK EXCAVATION
 STA. 18+74 - STA. 18+97 LT
 STA. 19+03 - STA. 19+22 LT
 STA. 19+74 - STA. 19+99 RT
 STA. 19+86 - STA. 20+10 LT
 STA. 20+05 - STA. 20+31 RT

604.42 CHANGING ELEVATION
 OF SEWER MANHOLES
 STA. 17+27 RT STA. 19+73 LT
 STA. 18+11 LT STA. 19+73 LT
 STA. 18+46 LT STA. 19+91 LT
 STA. 19+53 LT

618.30 DETECTABLE WARNING SURFACE
 STA. 18+78 LT
 STA. 19+17 LT
 STA. 19+78 RT
 STA. 19+97 LT
 STA. 20+27 RT

604.412, 604.415, 604.418 REHAB, DROP
 INLETS, CATCH BASINS, OR MANHOLES, CLASS I,
 CLASS II OR CLASS III

STA. 17+54 LT (TYPE D GRATE) STA. 20+11 LT (TYPE D GRATE)
 STA. 17+93 RT (TYPE D GRATE) STA. 20+24 RT (TYPE E GRATE)
 STA. 19+22 LT (TYPE D GRATE) STA. 21+96 RT (TYPE E GRATE)
 STA. 19+61 LT (TYPE D GRATE)

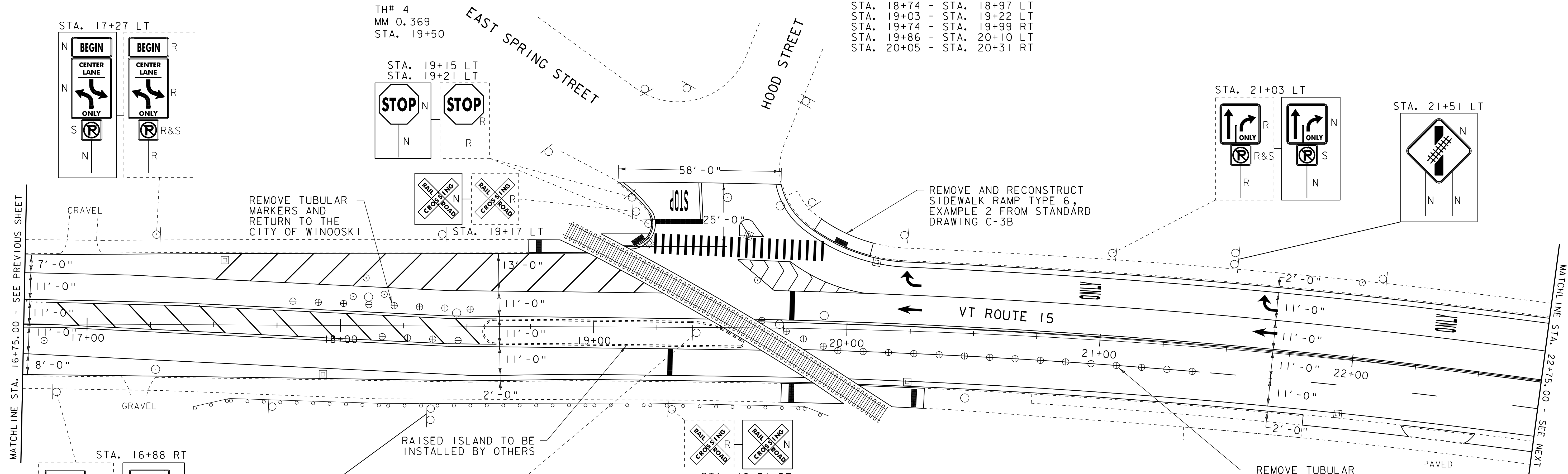
616.21 VERTICAL GRANITE CURB
 STA. 19+12 - STA. 19+23 LT
 STA. 19+86 - STA. 20+08 LT

616.41 REMOVAL OF EXISTING CURB
 STA. 19+12 - STA. 19+23 LT
 STA. 19+86 - STA. 20+08 LT

629.20 ADJUST ELEVATION
 OF VALVE BOX
 STA. 16+83 RT STA. 18+17 LT
 STA. 18+05 LT STA. 19+65 LT
 STA. 18+10 LT

618.10 PORTLAND CEMENT CONCRETE SIDEWALK, 5 INCH

STA. 18+74 - STA. 18+97 LT
 STA. 19+03 - STA. 19+22 LT
 STA. 19+74 - STA. 19+99 RT
 STA. 19+86 - STA. 20+10 LT
 STA. 20+05 - STA. 20+31 RT



MATCHLINE STA. 16+75.00 - SEE PREVIOUS SHEET

MATCHLINE STA. 22+75.00 - SEE NEXT SHEET

646.407 DURABLE 4 INCH WHITE LINE, RECESSED TYPE I TAPE
 STA. 16+75 - STA. 19+23 (SOLID LT)
 STA. 16+75 - STA. 19+84 (SOLID RT)
 STA. 19+14 - STA. 19+20 (SOLID LT)
 STA. 19+74 - STA. 22+75 (SOLID LT)
 STA. 19+83 - STA. 21+40 (SOLID RT)
 STA. 20+01 - STA. 22+75 (SOLID RT)
 STA. 21+03 - STA. 22+75 (SOLID LT)
 STA. 21+40 - STA. 22+75 (DASHED RT)

646.417 DURABLE 4 INCH YELLOW LINE, RECESSED TYPE I TAPE
 STA. 16+75 - STA. 18+53 (CENTERLINE RT)
 STA. 16+75 - STA. 18+53 (CENTERLINE LT)
 STA. 18+53 - STA. 19+47 (SOLID LT)
 STA. 18+53 - STA. 19+66 (SOLID RT)
 STA. 20+05 - STA. 22+75 (CENTERLINE LT)

646.447 DURABLE 8 INCH WHITE LINE, RECESSED TYPE I TAPE
 STA. 17+55 - STA. 19+23 (HATCHED LT)
 STA. 19+57 - STA. 21+03 (SOLID LT)
 STA. 19+57 - STA. 20+21 (HATCHED LT)

646.457 DURABLE 8 INCH YELLOW LINE, RECESSED TYPE I TAPE
 STA. 16+75 - STA. 18+53 (HATCHED LT)

646.487 DURABLE 24 INCH STOP BAR, RECESSED TYPE I TAPE
 STA. 19+23 - STA. 19+43 LT

646.491 DURABLE LETTER OR SYMBOL, TYPE I TAPE
 STA. 19+35 LT "STOP" STA. 21+65 LT ARROW
 STA. 20+25 LT ARROW STA. 21+65 LT ARROW
 STA. 20+25 LT ARROW STA. 22+35 LT "ONLY"
 STA. 20+95 LT "ONLY"

646.507 DURABLE CROSSWALK MARKING, RECESSED TYPE I TAPE
 STA. 19+14 - STA. 20+09 LT

646.602 TEMPORARY 4" WHITE LINE, PAINT
 STA. 16+75 - STA. 19+23 (SOLID LT)
 STA. 16+75 - STA. 19+84 (SOLID RT)
 STA. 19+14 - STA. 19+20 (SOLID LT)
 STA. 19+74 - STA. 22+75 (SOLID LT)
 STA. 19+83 - STA. 21+40 (SOLID RT)
 STA. 20+01 - STA. 22+75 (SOLID RT)
 STA. 21+03 - STA. 22+75 (SOLID LT)
 STA. 21+40 - STA. 22+75 (DASHED RT)

646.612 TEMPORARY 4" YELLOW LINE, PAINT
 STA. 16+75 - STA. 18+53 (CENTERLINE RT)
 STA. 16+75 - STA. 18+53 (CENTERLINE LT)
 STA. 18+53 - STA. 19+47 (SOLID LT)
 STA. 18+53 - STA. 19+66 (SOLID RT)
 STA. 20+05 - STA. 22+75 (CENTERLINE LT)

646.642 TEMPORARY 8 INCH WHITE LINE, PAINT
 STA. 17+55 - STA. 19+23 (HATCHED LT)
 STA. 19+57 - STA. 21+03 (SOLID LT)
 STA. 19+57 - STA. 20+21 (HATCHED LT)

646.652 TEMPORARY 8 INCH YELLOW LINE, PAINT
 STA. 16+75 - STA. 18+53 (HATCHED LT)

646.682 TEMPORARY 24" STOP BAR, PAINT
 STA. 19+23 - STA. 19+43 LT

646.692 TEMPORARY LETTER OR SYMBOL, PAINT
 STA. 19+35 LT "STOP" STA. 21+65 LT ARROW
 STA. 20+25 LT ARROW STA. 21+65 LT ARROW
 STA. 20+25 LT ARROW STA. 22+35 LT "ONLY"
 STA. 20+95 LT "ONLY"

646.702 TEMPORARY CROSSWALK MARKING, PAINT
 STA. 19+14 - STA. 20+09 LT

675.50 REMOVING SIGNS
 AS SHOWN - 13

675.60 ERECTING SALVAGED SIGNS
 AS SHOWN - 4

SIGN LEGEND
 R = REMOVE
 S = SALVAGE
 N = NEW
 RET = RETAIN
 B-B = BACK TO BACK

DATUM
 VERTICAL N/A
 HORIZONTAL N/A

PROJECT LAYOUT SHEET 2

PROJECT NAME: WINOOSKI
 PROJECT NUMBER: STP 2617(I)S
 FILE NAME: 06d064.dgn
 PROJECT LEADER: CDL
 DESIGNED BY: SJL
 PLOT FILE: 06D064.64.i
 PLOT DATE: 31-OCT-2011 16:46
 DRAWN BY: SJL
 CHECKED BY: EPD
 SHEET 64 OF 88