

646.407 DURABLE 4 INCH WHITE LINE, RECESSED TYPE ITAPE  
 (ALL LINES WILL INCLUDE EDGE LINE BREAKS AND RADIUS FOR TOWN HIGHWAYS)  
 U.S. ROUTE 7:  
 APPROACH, DASHED LANE LINE LT (30 LF)  
 APPROACH, DASHED LANE LINE RT (30 LF)  
 APPROACH, SOLID LANE LINE RT (30 LF)  
 APPROACH - STA 4+50.00 EDGE LINE LT / RT  
 STA 0+00.00 SOLID LANE LINE RT, SWIFT STREET  
 STA 0+50.00 - STA 2+23.00 SOLID LANE LINE LT  
 STA 0+50.00 - STA 2+23.00 SOLID LANE LINE RT  
 STA 0+50.00 - STA 4+50.00 DASHED LANE LINE LT  
 STA 0+50.00 - STA 4+50.00 DASHED LANE LINE RT  
 STA 1+02.00 - STA 2+23.00 SOLID LANE LINE LT  
 STA 2+23.00 - STA 3+20.00 DOTTED LANE LINE LT  
 STA 2+23.00 - STA 4+50.00 DASHED LANE LINE LT

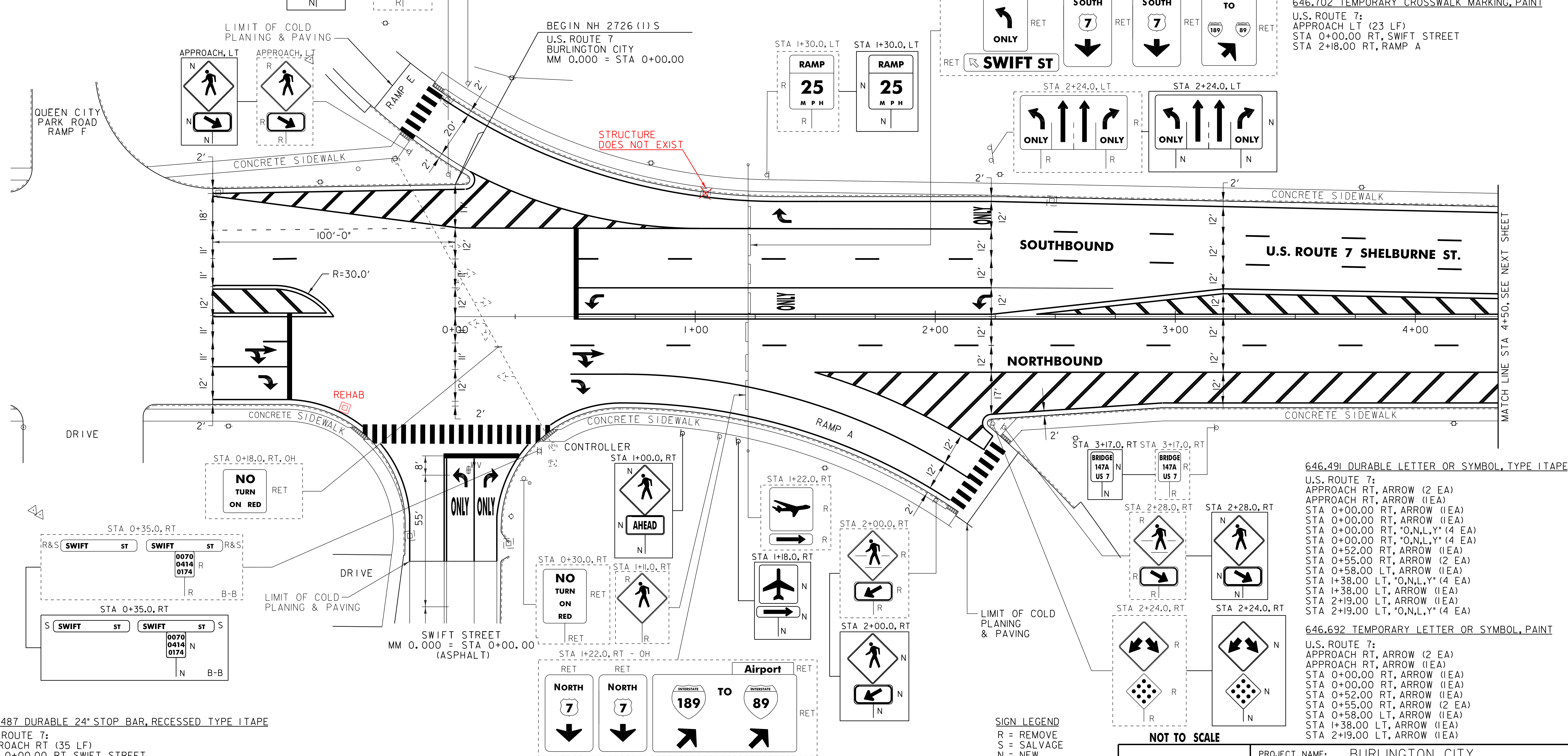
646.507 DURABLE CROSSWALK MARKING, RECESSED TYPE ITAPE  
 U.S. ROUTE 7:  
 APPROACH LT (23 LF)  
 STA 0+00.00 RT, SWIFT STREET  
 STA 2+18.00 RT, RAMP A

646.602 TEMPORARY 4 INCH WHITE LINE, PAINT  
 (ALL LINES WILL INCLUDE EDGE LINE BREAKS AND RADIUS FOR TOWN HIGHWAYS)  
 U.S. ROUTE 7:  
 APPROACH, DASHED LANE LINE LT (30 LF)  
 APPROACH, DASHED LANE LINE RT (30 LF)  
 APPROACH, SOLID LANE LINE RT (30 LF)  
 APPROACH - STA 4+50.00 EDGE LINE LT / RT  
 STA 0+00.00 SOLID LANE LINE RT, SWIFT STREET  
 STA 0+50.00 - STA 2+23.00 SOLID LANE LINE LT  
 STA 0+50.00 - STA 2+23.00 SOLID LANE LINE RT  
 STA 0+50.00 - STA 4+50.00 DASHED LANE LINE LT  
 STA 0+50.00 - STA 4+50.00 DASHED LANE LINE RT  
 STA 1+02.00 - STA 2+23.00 SOLID LANE LINE LT  
 STA 2+23.00 - STA 3+20.00 DOTTED LANE LINE LT  
 STA 2+23.00 - STA 4+50.00 DASHED LANE LINE LT

646.417 DURABLE 4 INCH YELLOW LINE, RECESSED TYPE ITAPE  
 (ALL LINES WILL INCLUDE C/L BREAKS FOR TOWN HIGHWAYS)  
 U.S. ROUTE 7:  
 APPROACH, DOUBLE SOLID MEDIAN C/L & LT (48 LF)  
 STA 0+00.00 DOUBLE SOLID RT, SWIFT STREET  
 STA 0+50.00 - STA 2+23.00 DOUBLE SOLID C/L  
 STA 2+23.00 - STA 4+50.00 DOUBLE SOLID MEDIAN C/L & LT

646.457 DURABLE 8 INCH YELLOW LINE, RECESSED TYPE ITAPE  
 U.S. ROUTE 7:  
 APPROACH, HATCHED MEDIAN C/L & LT (36 LF)  
 STA 2+23.00 - STA 4+50.00 HATCHED MEDIAN C/L & LT

646.612 TEMPORARY 4 INCH YELLOW LINE, PAINT  
 (ALL LINES WILL INCLUDE C/L BREAKS FOR TOWN HIGHWAYS)  
 U.S. ROUTE 7:  
 APPROACH, DOUBLE SOLID MEDIAN C/L & LT (48 LF)  
 STA 0+00.00 DOUBLE SOLID RT, SWIFT STREET  
 STA 0+50.00 - STA 2+23.00 DOUBLE SOLID C/L  
 STA 2+23.00 - STA 4+50.00 DOUBLE SOLID MEDIAN C/L & LT



646.487 DURABLE 24" STOP BAR, RECESSED TYPE ITAPE  
 U.S. ROUTE 7:  
 APPROACH RT (35 LF)  
 STA 0+00.00 RT, SWIFT STREET  
 STA 0+50.00 LT

646.682 TEMPORARY 24 INCH STOP BAR, PAINT  
 U.S. ROUTE 7:  
 APPROACH RT (35 LF)  
 STA 0+00.00 RT, SWIFT STREET  
 STA 0+50.00 LT

675.50 REMOVING SIGNS  
 AS SHOWN - 21  
 675.60 ERECTING SALVAGED SIGNS  
 AS SHOWN - 2

646.702 TEMPORARY CROSSWALK MARKING, PAINT  
 U.S. ROUTE 7:  
 APPROACH LT (23 LF)  
 STA 0+00.00 RT, SWIFT STREET  
 STA 2+18.00 RT, RAMP A

646.491 DURABLE LETTER OR SYMBOL, TYPE ITAPE  
 U.S. ROUTE 7:  
 APPROACH RT, ARROW (2 EA)  
 APPROACH RT, ARROW (1EA)  
 STA 0+00.00 RT, ARROW (1EA)  
 STA 0+00.00 RT, ARROW (1EA)  
 STA 0+00.00 RT, "O,N,L,Y" (4 EA)  
 STA 0+00.00 RT, "O,N,L,Y" (4 EA)  
 STA 0+52.00 RT, ARROW (1EA)  
 STA 0+55.00 RT, ARROW (2 EA)  
 STA 0+58.00 LT, ARROW (1EA)  
 STA 1+38.00 LT, "O,N,L,Y" (4 EA)  
 STA 1+38.00 LT, ARROW (1EA)  
 STA 2+19.00 LT, ARROW (1EA)  
 STA 2+19.00 LT, "O,N,L,Y" (4 EA)

646.692 TEMPORARY LETTER OR SYMBOL, PAINT  
 U.S. ROUTE 7:  
 APPROACH RT, ARROW (2 EA)  
 APPROACH RT, ARROW (1EA)  
 STA 0+00.00 RT, ARROW (1EA)  
 STA 0+00.00 RT, ARROW (1EA)  
 STA 0+52.00 RT, ARROW (1EA)  
 STA 0+55.00 RT, ARROW (2 EA)  
 STA 0+58.00 LT, ARROW (1EA)  
 STA 1+38.00 LT, ARROW (1EA)  
 STA 2+19.00 LT, ARROW (1EA)

**SIGN LEGEND**  
 R = REMOVE  
 S = SALVAGE  
 N = NEW  
 RET = RETAIN  
 B-B = BACK TO BACK  
 EXISTING = \_\_\_\_\_  
 NEW = \_\_\_\_\_  
 ⊕ = RETURN TO BURLINGTON CITY

**SIGNING & STRIPING PLAN SHEET #1**

PROJECT NAME: BURLINGTON CITY  
 PROJECT NUMBER: NH 2726(I)S  
 FILE NAME: 07D220.dgn  
 PROJECT LEADER: DEG  
 DESIGNED BY: JPS  
 IPARM FILE: 07D220.22.i  
 PLOT DATE: 31-OCT-2011 16:44  
 DRAWN BY: KAR  
 CHECKED BY: DWE  
 SHEET 22 OF 88