

203.16 SOLID ROCK EXCAVATION
 STA. 133+27 - STA. 133+38 RT
 STA. 133+65 - STA. 133+76 RT

604.412, 604.415, 604.418 REHAB, DROP
 INLETS, CATCH BASINS, OR MANHOLES, CLASS I,
 CLASS II OR CLASS III
 STA. 133+36 RT "TYPE D GRATE"
 STA. 133+66 RT "TYPE D GRATE"

604.42 CHANGING ELEVATION
 OF SEWER MANHOLES
 STA. 133+31 LT
 STA. 133+50 LT
 STA. 134+98 CL

618.10 PORTLAND CEMENT
 CONCRETE SIDEWALK, 5 INCH
 STA. 133+27 - STA. 133+38 RT
 STA. 133+65 - STA. 133+76 RT

618.30 DETECTABLE WARNING SURFACE
 STA. 133+30 RT STA. 133+69 RT
 STA. 133+34 RT STA. 133+73 RT

629.20 ADJUST ELEVATION OF VALVE BOX
 STA. 132+60 RT (WSV) STA. 133+63 RT (WSV)
 STA. 133+57 RT (WSV)

646.406 DURABLE 4" WHITE LINE, RECESSED POLYUREA
 STA. 131+25 - STA. 136+75 (SOLID LT)

646.416 DURABLE 4" YELLOW LINE, RECESSED POLYUREA
 STA. 131+25 - STA. 133+31 (SOLID LT & RT)
 STA. 133+71 - STA. 136+75 (SOLID LT & RT)

646.426 DURABLE 6" WHITE LINE, RECESSED POLYUREA
 STA. 131+25 - STA. 133+31 (SOLID RT)
 STA. 133+71 - STA. 136+75 (SOLID RT)

646.486 DURABLE 24" STOP BAR, RECESSED POLYUREA
 STA. 133+54 - STA. 133+64 RT

646.491 DURABLE LETTER OR SYMBOL, TYPE I TAPE
 STA. 131+60 RT BIKE
 STA. 131+72 RT ARROW
 STA. 133+59 RT "STOP"
 STA. 134+39 RT BIKE
 STA. 134+51 RT ARROW

646.501 DURABLE CROSSWALK MARKING, TYPE I TAPE
 STA. 133+38 - STA. 133+64 RT

646.602 TEMPORARY 4" WHITE LINE, PAINT
 STA. 131+25 - STA. 136+75 (SOLID LT)

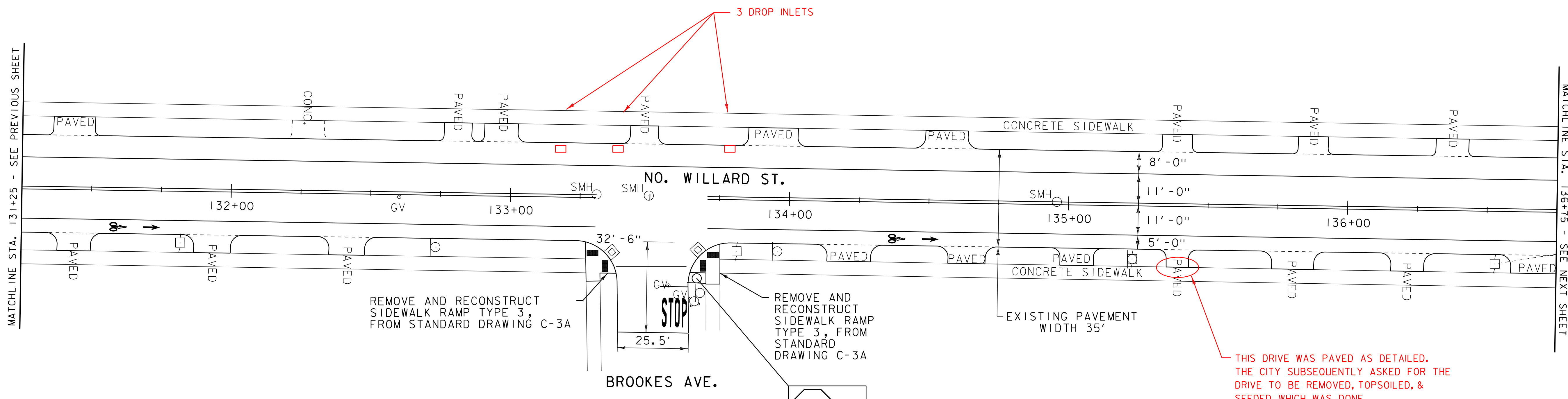
646.612 TEMPORARY 4" YELLOW LINE, PAINT
 STA. 131+25 - STA. 133+31 (SOLID LT & RT)
 STA. 133+71 - STA. 136+75 (SOLID LT & RT)

646.622 TEMPORARY 6" WHITE LINE, PAINT
 STA. 131+25 - STA. 133+31 (SOLID RT)
 STA. 133+71 - STA. 136+75 (SOLID RT)

646.682 TEMPORARY 24" STOP BAR, PAINT
 STA. 133+54 - STA. 133+64 RT

646.692 TEMPORARY LETTER OR SYMBOL, PAINT
 STA. 131+60 RT BIKE
 STA. 131+72 RT ARROW
 STA. 133+59 RT "STOP"
 STA. 134+39 RT BIKE
 STA. 134+51 RT ARROW

646.702 TEMPORARY CROSSWALK MARKING, PAINT
 STA. 133+38 - STA. 133+64 RT



LEGEND

- | | | | |
|---|--------------------------|-----|----------------------|
| ○ | SIGN | ● | LIGHT POLE |
| ⊙ | HYDRANT | ■ | EX. PED RAMP |
| ○ | MANHOLE | □ | JUNCTION BOX |
| ⊙ | VALVE | ⊗ | PED BUTTON |
| ⊙ | GAS PIPELINE MARKER | ⊗ | ELECTRICAL BOX |
| ⊗ | CATCH BASIN / DROP INLET | ⊗ | SIGNAL |
| ⊗ | CURB INLET | ⊗ | PEDESTAL POST |
| ⊗ | TRAFFIC CONTROL BOX | ⊗ | STRAIN POLE |
| ⊗ | PARKING METER | → | CAMERA |
| ⊗ | UTILITY POLE | VDZ | VIDEO DETECTION ZONE |

- SIGN LEGEND
- R = REMOVE
 - R&S = REMOVE AND SALVAGE
 - RET = RETAIN
 - S = SALVAGE
 - N = NEW
 - B-B = BACK TO BACK

PROJECT LAYOUT SHEET 19

PROJECT NAME:	BURLINGTON (CLASS I)
PROJECT NUMBER:	STP 2721(I)
FILE NAME:	07d206.dgn
PROJECT LEADER:	CDL
DESIGNED BY:	BMB
PLOT FILE:	07d206_35.i
PLOT DATE:	18-APR-2014 13:52
DRAWN BY:	BMB
CHECKED BY:	EPD
SHEET	35 OF 70

NOT TO SCALE