

203.16 SOLID ROCK EXCAVATION
 STA. 96+36 - STA. 96+42 LT
 STA. 96+60 - STA. 96+65 LT
 STA. 98+57 - STA. 98+65 RT
 STA. 98+58 - STA. 98+63 LT

604.412, 604.415, 604.418 REHAB, DROP
 INLETS, CATCH BASINS, OR MANHOLES, CLASS I,
 CLASS II OR CLASS III

STA. 96+98 RT "TYPE D GRATE"
 STA. 99+28 RT "TYPE D GRATE"
 STA. 99+28 LT "TYPE D GRATE"

604.42 CHANGING ELEVATION
 OF SEWER MANHOLES

STA. 96+14 LT
 STA. 97+07 LT
 STA. 99+28 LT

618.10 PORTLAND CEMENT
 CONCRETE SIDEWALK, 5 INCH
 STA. 96+36 - STA. 96+42 LT
 STA. 96+60 - STA. 96+65 LT
 STA. 98+57 - STA. 98+65 RT
 STA. 98+58 - STA. 98+63 LT

618.30 DETECTABLE WARNING SURFACE
 STA. 96+38 LT STA. 98+61 LT
 STA. 96+63 LT STA. 98+61 RT

629.20 ADJUST ELEVATION OF VALVE BOX
 STA. 96+44 RT (WSV) STA. 99+25 RT (WSV)
 STA. 96+65 RT (WSV) STA. 99+38 RT (WSV)
 STA. 96+78 RT (WSV)

646.406 DURABLE 4" WHITE LINE, RECESSED POLYUREA
 STA. 95+25 - STA. 96+33 (SOLID LT)
 STA. 95+25 - STA. 98+56 (SOLID RT)
 STA. 96+69 - STA. 98+55 (SOLID LT)
 STA. 98+66 - STA. 101+25 (SOLID RT)
 STA. 98+83 - STA. 101+25 (SOLID LT)

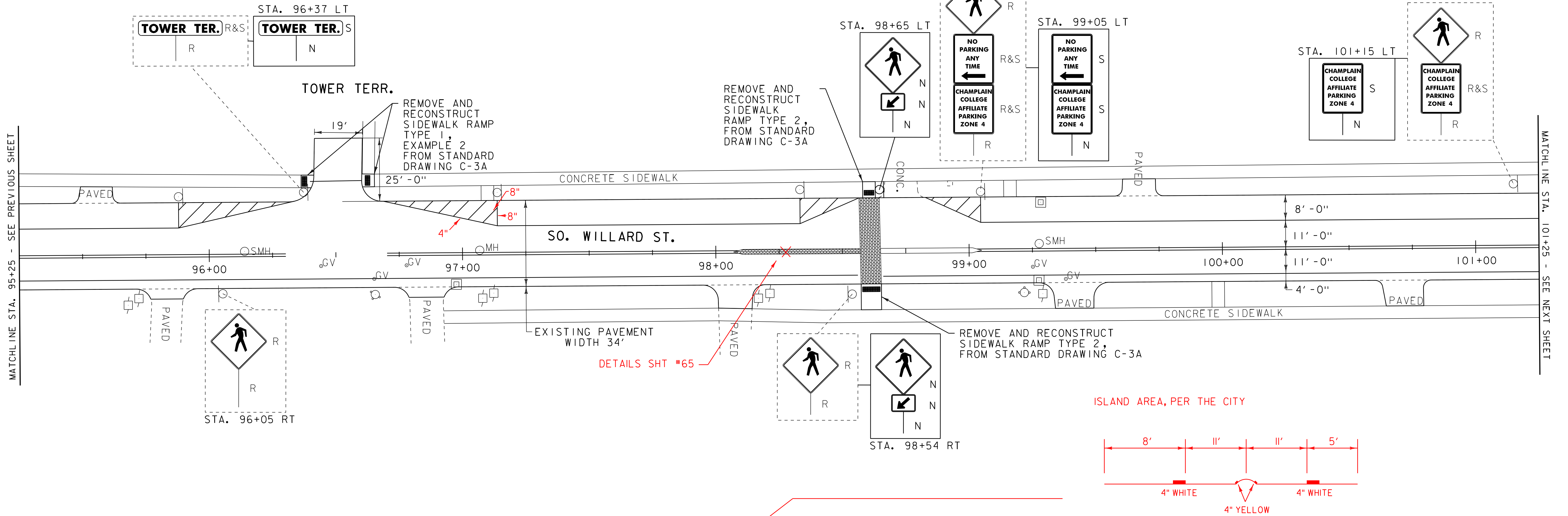
646.416 DURABLE 4" YELLOW LINE, RECESSED POLYUREA
 STA. 95+25 - STA. 96+30 (SOLID LT & RT)
 STA. 96+70 - STA. 98+09 (SOLID LT & RT)
 STA. 99+03 - STA. 101+25 (SOLID LT & RT)

646.446 DURABLE 8" WHITE LINE, RECESSED POLYUREA
 STA. 95+88 (SOLID LT)
 STA. 95+88 - STA. 96+33 (HATCHED LT)
 STA. 96+69 - STA. 97+14 (HATCHED LT)
 STA. 97+14 (SOLID LT)
 STA. 98+33 (SOLID LT)
 STA. 98+33 - STA. 98+55 (HATCHED LT)
 STA. 98+83 - STA. 99+05 (HATCHED LT)
 STA. 99+05 (SOLID LT)

646.602 TEMPORARY 4" WHITE LINE, PAINT
 STA. 95+25 - STA. 96+33 (SOLID LT)
 STA. 95+25 - STA. 98+56 (SOLID RT)
 STA. 96+69 - STA. 98+55 (SOLID LT)
 STA. 98+66 - STA. 101+25 (SOLID RT)
 STA. 98+83 - STA. 101+25 (SOLID LT)

646.612 TEMPORARY 4" YELLOW LINE, PAINT
 STA. 95+25 - STA. 96+30 (SOLID LT & RT)
 STA. 96+70 - STA. 98+56 (SOLID LT & RT)
 STA. 98+66 - STA. 101+25 (SOLID LT & RT)

646.642 TEMPORARY 8" WHITE LINE, PAINT
 STA. 95+88 (SOLID LT)
 STA. 95+88 - STA. 96+33 (HATCHED LT)
 STA. 96+69 - STA. 97+14 (HATCHED LT)
 STA. 97+14 (SOLID LT)
 STA. 98+33 (SOLID LT)
 STA. 98+33 - STA. 98+55 (HATCHED LT)
 STA. 98+83 - STA. 99+05 (HATCHED LT)
 STA. 99+05 (SOLID LT)



646.501 DURABLE CROSSWALK MARKING, TYPE I TAPE
 STA. 96+41 - STA. 96+60 LT

646.702 TEMPORARY CROSSWALK MARKING, PAINT
 STA. 96+41 - STA. 96+60 LT
 STA. 98+60 LT & RT

900.640 SPECIAL PROVISION (DURABLE
 CROSSWALK MARKING, IMPRINTED/COLORIZED)
 STA. 98+60 LT & RT

900.640 SPECIAL PROVISION (DURABLE
 CENTERLINE MARKING, IMPRINTED/COLORIZED)
 STA. 98+07 - STA. 98+57 LT & RT
 STA. 98+65 - STA. 99+05 LT & RT

675.50 REMOVING SIGNS
 AS SHOWN - 8
 675.60 ERECTING SALVAGED SIGNS
 AS SHOWN - 4

- LEGEND**
- LIGHT POLE
 - SIGN
 - HYDRANT
 - MANHOLE
 - VALVE
 - GAS PIPELINE MARKER
 - CATCH BASIN / DROP INLET
 - CURB INLET
 - TRAFFIC CONTROL BOX
 - PARKING METER
 - UTILITY POLE
 - EX. PED RAMP
 - JUNCTION BOX
 - PED BUTTON
 - ELECTRICAL BOX
 - SIGNAL
 - PEDESTAL POST
 - STRAIN POLE
 - CAMERA
 - VDZ VIDEO DETECTION ZONE
- SIGN LEGEND**
- R = REMOVE
 - R&S = REMOVE AND SALVAGE
 - RET = RETAIN
 - S = SALVAGE
 - N = NEW
 - B-B = BACK TO BACK

**PROJECT
 LAYOUT
 SHEET 13**

PROJECT NAME: BURLINGTON (CLASS I)
 PROJECT NUMBER: STP 2721(I)

FILE NAME: 07d206.dgn
 PROJECT LEADER: CDL
 DESIGNED BY: BMB
 PLOT FILE: 07d206_29.i

PLOT DATE: 18-APR-2014 13:52
 DRAWN BY: BMB
 CHECKED BY: EPD
 SHEET 29 OF 70

NOT TO SCALE