

~~620.75 SNOW BARRIER, GALVANIZED~~
~~DERBY STA. 31+50 TO 31+80, LT~~
 THIS ITEM ELIMINATED FROM THE CONTRACT
 621.20 STEEL BEAM GUARDRAIL, GALVANIZED
 0+50.8 DERBY TOWN STA. 0+75.8 TO 2+25.8, RT
 0+72.8 DERBY TOWN STA. 0+97.8 TO 4+10.3, LT

621.60 ANCHOR FOR STEEL BEAM RAIL
 DERBY TOWN STA. 2+25.8, RT
 DERBY TOWN STA. 4+10.3, LT

621.74 ALUMINUM APPROACH RAILING
 DERBY TOWN STA. 0+50.8 TO 0+75.8, RT 0+25.8 TO 0+50.8, RT
 DERBY TOWN STA. 0+72.8 TO 0+97.8, LT 0+47.8 TO 0+72.8, LT

621.80 REMOVAL AND DISPOSAL OF GUARDRAIL
 DERBY TOWN STA. 0+50.8 TO STA. 2+27.8, RT 0+25.8 TO 2+25.8, RT
 DERBY TOWN STA. 0+72.8 TO STA. 4+13.8, LT 0+47.8 TO 4+10.3, LT

646.402 DURABLE 4 INCH WHITE LINE, THERMOPLASTIC
 (ALL LINES WILL INCLUDE EDGE LINE BREAKS AND RADIUS FOR SIDE ROADS)
 DERBY STA. 31+50 TO 31+89.12, SOLID LT & RT
 DERBY TOWN STA. 0+00 TO 4+81.52, SOLID LT & RT
 DERBY TOWN STA. 2+81, SOLID RT (NB ON/OFF RAMP A EDGELINES)
 DERBY TOWN STA. 4+41, SOLID RT (HERRICK ROAD EDGELINES)

646.412 DURABLE 4 INCH YELLOW LINE, THERMOPLASTIC
 (ALL LINES WILL INCLUDE C BREAKS FOR SIDE ROADS)
 DERBY STA. 31+50 TO 31+89.12, SOLID LT & RT
 DERBY TOWN STA. 0+00 TO 4+81.52, SOLID LT & RT
 DERBY TOWN STA. 2+81, DOUBLE SOLID RT (NB ON/OFF RAMP A)
 DERBY TOWN STA. 4+41, DOUBLE SOLID RT (HERRICK ROAD)

646.482 DURABLE 24 INCH STOP BAR, THERMOPLASTIC
 DERBY TOWN STA. 2+96, RT (NB ON/OFF RAMP A)
 DERBY TOWN STA. 4+53, RT (HERRICK ROAD)

646.492 DURABLE LETTER OR SYMBOL, THERMOPLASTIC
 DERBY TOWN STA. 2+95, RT - "STOP"
 DERBY TOWN STA. 4+51, RT - "STOP"

646.602 TEMPORARY 4 INCH WHITE LINE, PAINT
 (ALL LINES WILL INCLUDE EDGE LINE BREAKS AND RADIUS FOR SIDE ROADS)
 DERBY STA. 31+50 TO 31+89.12, SOLID LT & RT
 DERBY TOWN STA. 0+00 TO 4+81.52, SOLID LT & RT
 DERBY TOWN STA. 2+81, SOLID RT (NB ON/OFF RAMP A EDGELINES)
 DERBY TOWN STA. 4+41, SOLID RT (HERRICK ROAD EDGELINES)

646.612 TEMPORARY 4 INCH YELLOW LINE, PAINT
 (ALL LINES WILL INCLUDE C BREAKS FOR SIDE ROADS)
 DERBY STA. 31+50 TO 31+89.12, SOLID LT & RT
 DERBY TOWN STA. 0+00 TO 4+81.52, SOLID LT & RT
 DERBY TOWN STA. 2+81, DOUBLE SOLID RT (NB ON/OFF RAMP A)
 DERBY TOWN STA. 4+41, DOUBLE SOLID RT (HERRICK ROAD)

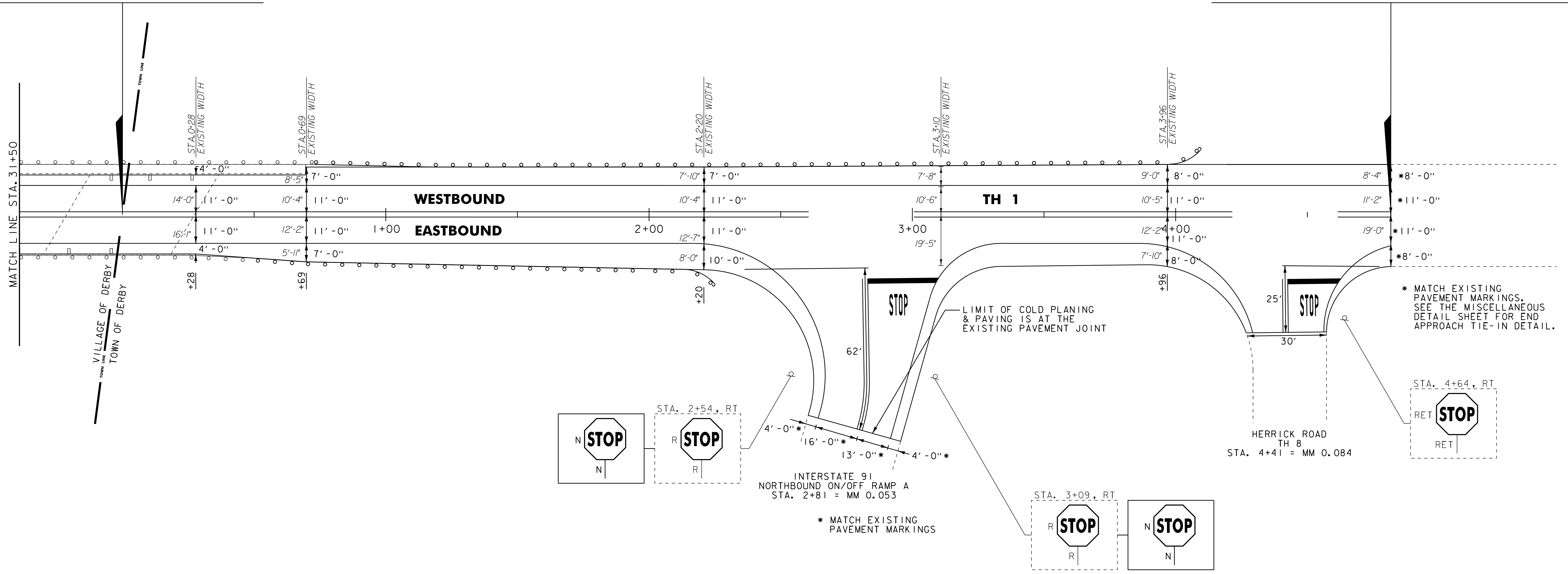
646.682 TEMPORARY 24 INCH STOP BAR, PAINT
 DERBY TOWN STA. 2+96, RT (NB ON/OFF RAMP A)
 DERBY TOWN STA. 4+53, RT (HERRICK ROAD)

646.692 TEMPORARY LETTER OR SYMBOL, PAINT
 DERBY TOWN STA. 2+95, RT - "STOP"
 DERBY TOWN STA. 4+51, RT - "STOP"

675.50 REMOVING SIGNS
 AS SHOWN - 2

END STP 2703(1) ALT U.S. ROUTE 5
DERBY STA. 31+89.12 = MM 0.604
BEGIN APPROACH

END APPROACH
DERBY TOWN T.H.1 STA. 4+81.52 = MM 0.091



NOTE:
 1. FOR LEGENDS, SEE LAYOUT SHEET #1.
 2. ALL EXISTING SIGNS NOT SHOWN SHALL BE RETAINED.

NOT TO SCALE

PROJECT LAYOUT SHEET #14

PROJECT NAME: DERBY	PLOT DATE: 29-JAN-2013 09:2
PROJECT NUMBER: STP 2703(1)	DRAWN BY: STANTEC
FILE NAME: 07D202.dgn	CHECKED BY: JLL
PROJECT LEADER: JLL	SHEET 47 OF 62
DESIGNED BY: STANTEC	
IPARM FILE: 07C194_47.i	