

604.412, 604.415 OR 604.418 REHAB.
Dis. CBS OR MHS, CLASS 1, II OR III

U.S. ROUTE 5 STA. 310+09, RT
U.S. ROUTE 5 STA. 311+09, LT
U.S. ALT ROUTE 5 STA. 0+47, CL
U.S. ALT ROUTE 5 STA. 0+58, RT
U.S. ALT ROUTE 5 STA. 0+64, RT
U.S. ALT ROUTE 5 STA. 0+70, LT
U.S. ALT ROUTE 5 STA. 1+20, RT
U.S. ROUTE 5 STA. 313+17 RT

604.42 CHANGING ELEVATION OF SEWER MANHOLES

U.S. ROUTE 5 STA. 311+19, LT ROUTE 5 STA. 311+35 LT
U.S. ROUTE 5 STA. 313+05, LT ROUTE 5 STA. 311+80 LT
U.S. ALT ROUTE 5 STA. 0+49, RT ROUTE 5 STA. 310+30 LT

616.28 CAST-IN-PLACE CONCRETE CURB, TYPE B

U.S. ALT ROUTE 5 STA. 0+85, RT

616.41 REMOVAL OF EXISTING CURB

U.S. ALT ROUTE 5 STA. 0+85, RT

618.10 PORTLAND CEMENT CONCRETE SIDEWALK, 5 INCH

U.S. ROUTE 5 STA. 309+72, RT
U.S. ROUTE 5 STA. 309+78, LT
U.S. ALT ROUTE 5 STA. 0+85, RT
U.S. ALT ROUTE 5 STA. 0+85, LT

618.30 DETECTABLE WARNING SURFACE

U.S. ROUTE 5 STA. 309+72, RT
U.S. ROUTE 5 STA. 309+78, LT
U.S. ALT ROUTE 5 STA. 0+85, RT } ELIMINATED BY THE VILLAGE
U.S. ALT ROUTE 5 STA. 0+85, LT } OF DERBY LINE

646.402 DURABLE 4 INCH WHITE LINE, THERMOPLASTIC

(ALL LINES WILL INCLUDE EDGE LINE BREAKS AND
RADIi FOR SIDE ROADS)
U.S. ROUTE 5 STA. 309+50 TO 311+33, SOLID LT & RT
(PARKING SPACES & DIAGONALS WITH EDGELINE BREAKS
FOR CROSSWALK)
U.S. ROUTE 5 STA. 311+28 TO 313+31.52, SOLID LT & RT
U.S. ALT. ROUTE 5 STA. 0+16 TO 1+50 RT
U.S. ALT. ROUTE 5 STA. 0+60 TO 1+50 LT

646.412 DURABLE 4 INCH YELLOW LINE, THERMOPLASTIC

(ALL LINES WILL INCLUDE @ BREAKS FOR SIDE ROADS)
U.S. ROUTE 5 STA. 309+50 TO 313+31.52, SOLID LT & RT
U.S. ALT. ROUTE 5 STA. 0+60 TO 1+50 LT & RT

646.482 DURABLE 24 INCH STOP BAR, THERMOPLASTIC

U.S. ALT ROUTE 5 STA. 0+60, LT

646.492 DURABLE LETTER OR SYMBOL, THERMOPLASTIC

U.S. ROUTE 5 STA. 309+64, LT - ARROW
U.S. ROUTE 5 STA. 310+22, LT - "CUSTOMS"
U.S. ROUTE 5 STA. 310+32, LT - "US"
U.S. ROUTE 5 STA. 310+97, LT - ARROW
U.S. ROUTE 5 STA. 311+54, LT - "CUSTOMS"
U.S. ROUTE 5 STA. 311+64, LT - "US"
U.S. ROUTE 5 STA. 311+76, LT - "TO"
U.S. ROUTE 5 STA. 311+85, LT - "REPORT"
U.S. ROUTE 5 STA. 312+19, LT - "AHEAD"
U.S. ROUTE 5 STA. 312+30, LT - "STOP"
U.S. ROUTE 5 STA. 312+62, LT - "CUSTOMS"
U.S. ROUTE 5 STA. 312+72, LT - "US"
U.S. ROUTE 5 STA. 312+83, LT - "TO"
U.S. ROUTE 5 STA. 312+93, LT - "REPORT"
U.S. ALT. ROUTE 5 STA. 0+70, LT - "STOP"

ALT. U.S. ROUTE 5
STA. 0+98, LT

646.502 DURABLE CROSSWALK MARKING, THERMOPLASTIC

U.S. ROUTE 5 STA. 309+46, LT TO 309+72, RT
U.S. ROUTE 5 STA. 309+50 TO 309+75, LT
U.S. ALT ROUTE 5 STA. 0+54 TO 0+74, RT } ELIMINATED BY
U.S. ALT ROUTE 5 STA. 0+85, LT - RT } VILLAGE OF DERBY
LINE

646.602 TEMPORARY 4 INCH WHITE LINE, PAINT

(ALL LINES WILL INCLUDE EDGE LINE BREAKS AND
RADIi FOR SIDE ROADS)
U.S. ROUTE 5 STA. 309+50 TO 311+33, SOLID LT & RT
(PARKING SPACES & DIAGONALS WITH EDGELINE BREAKS
FOR CROSSWALK)
U.S. ROUTE 5 STA. 311+28 TO 313+31.52, SOLID LT & RT
U.S. ALT. ROUTE 5 STA. 0+16 TO 1+50 RT
U.S. ALT. ROUTE 5 STA. 0+60 TO 1+50 LT

646.612 TEMPORARY 4 INCH YELLOW LINE, PAINT

(ALL LINES WILL INCLUDE @ BREAKS FOR SIDE ROADS)
U.S. ROUTE 5 STA. 309+50 TO 313+31.52, SOLID LT & RT
U.S. ALT. ROUTE 5 STA. 0+60 TO 1+50 LT & RT

646.682 TEMPORARY 24 INCH STOP BAR, PAINT

U.S. ALT ROUTE 5 STA. 0+60, LT

646.692 TEMPORARY LETTER OR SYMBOL, PAINT

U.S. ROUTE 5 STA. 309+64, LT - ARROW
U.S. ROUTE 5 STA. 310+22, LT - "CUSTOMS"
U.S. ROUTE 5 STA. 310+32, LT - "US"
U.S. ROUTE 5 STA. 310+97, LT - ARROW
U.S. ROUTE 5 STA. 311+54, LT - "CUSTOMS"
U.S. ROUTE 5 STA. 311+64, LT - "US"
U.S. ROUTE 5 STA. 311+76, LT - "TO"
U.S. ROUTE 5 STA. 311+85, LT - "REPORT"
U.S. ROUTE 5 STA. 312+19, LT - "AHEAD"
U.S. ROUTE 5 STA. 312+30, LT - "STOP"
U.S. ROUTE 5 STA. 312+62, LT - "CUSTOMS"
U.S. ROUTE 5 STA. 312+72, LT - "US"
U.S. ROUTE 5 STA. 312+83, LT - "TO"
U.S. ROUTE 5 STA. 312+93, LT - "REPORT"
U.S. ALT. ROUTE 5 STA. 0+70, LT - "STOP"

646.702 TEMPORARY CROSSWALK MARKING, PAINT

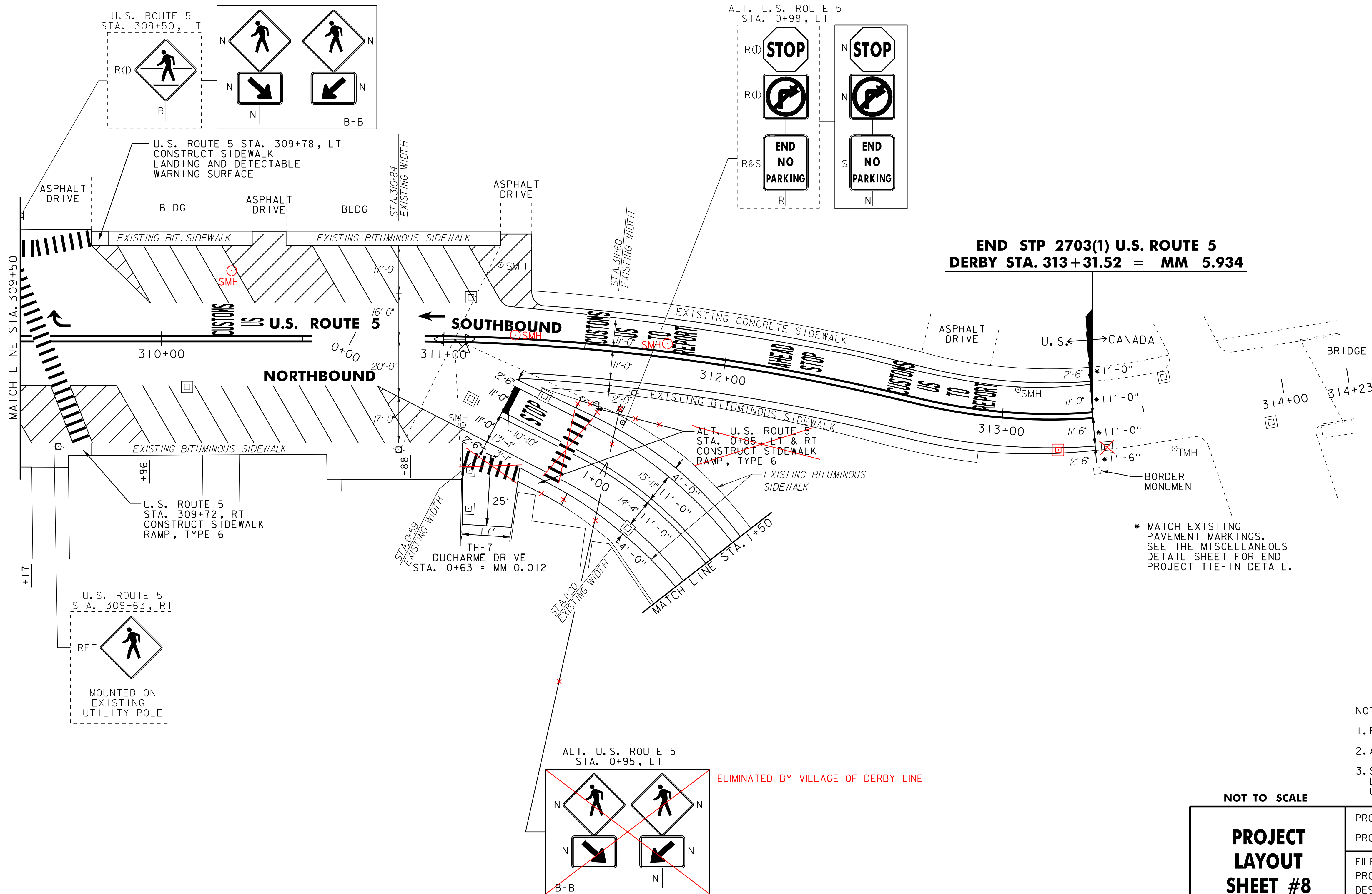
U.S. ROUTE 5 STA. 309+46, LT TO 309+72, RT
U.S. ROUTE 5 STA. 309+50 TO 309+75, LT
U.S. ALT ROUTE 5 STA. 0+54 TO 0+74, RT
U.S. ALT ROUTE 5 STA. 0+85, LT - RT

675.50 REMOVING SIGNS

AS SHOWN - 4

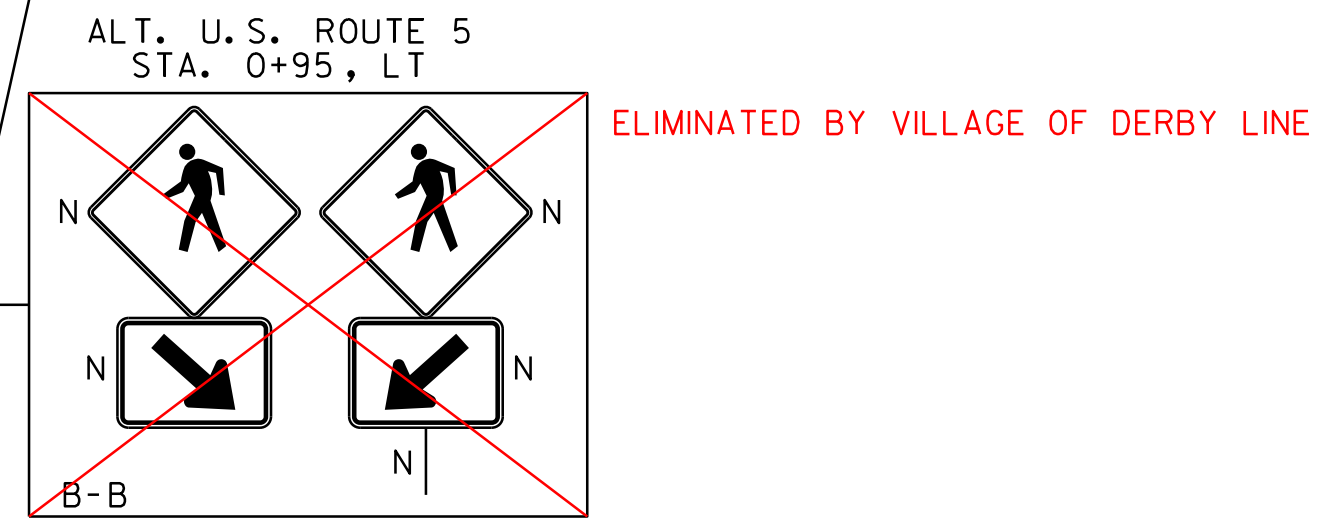
675.60 ERECTING SALVAGED SIGNS

AS SHOWN - 1



- NOTE:
- 1. FOR LEGENDS, SEE LAYOUT SHEET #1.
 - 2. ALL EXISTING SIGNS NOT SHOWN SHALL BE RETAINED.
 - 3. SEE THE PAVEMENT MARKING DETAIL SHEET FOR THE LETTER AND SYMBOL LAYOUT FOR THE APPROACH TO U.S. CUSTOMS, AND THE ANGLED PARKING DETAILS.

PROJECT LAYOUT SHEET #8	PROJECT NAME: DERBY	PLOT DATE: 29-JAN-2013 09:2
	PROJECT NUMBER: STP 2703(1)	DRAWN BY: STANTEC
	FILE NAME: 07D202.dgn	CHECKED BY: JLL
	DESIGNED BY: STANTEC	SHEET 41 OF 62
IPARM FILE: 07C194_41.i		



ELIMINATED BY VILLAGE OF DERBY LINE