

604.412, 604.415 OR 604.418 REHAB.
DIS, CBS OR MHS, CLASS 1, I1 OR I1

STA. 58+52, LT
STA. 58+69, RT
STA. 58+97, LT
STA. 59+11, LT
STA. 61+46, LT

604.42 CHANGING ELEVATION OF SEWER MANHOLES

STA. 57+93, RT
STA. 59+09, RT
STA. 61+40, LT
STA. 61+56, RT
STA. 62+40, RT
STA. 63+02, LT

616.28 CAST-IN-PLACE CONCRETE CURB, TYPE B
STA. 59+04, LT

616.41 REMOVAL OF EXISTING CURB
STA. 59+04, LT

618.10 PORTLAND CEMENT CONCRETE SIDEWALK, 5 INCH
STA. 59+04, LT

618.30 DETECTABLE WARNING SURFACE
STA. 59+04, LT

629.20 ADJUST ELEVATION OF VALVE BOX
STA. 60+57, LT

646.20 4 INCH WHITE LINE
STA. 57+50 TO 63+50, SOLID LT & RT
(INCLUDE EDGE LINE BREAKS FOR TOWN HIGHWAYS)

646.21 4 INCH YELLOW LINE
STA. 57+50 TO 63+50, SOLID LT & RT
(INCLUDE C BREAKS FOR TOWN HIGHWAYS)
STA. 59+06, DOUBLE SOLID LT (EASTERN AVE.)

646.26 24 INCH STOP BAR
STA. 59+06, LT (EASTERN AVE.)

646.30 LETTER OR SYMBOL
STA. 59+06, LT - "STOP" (EASTERN AVE.)

646.31 CROSSWALK MARKING
STA. 59+04, LT TO 59+15, RT

646.602 TEMPORARY 4 INCH WHITE LINE, PAINT
STA. 57+50 TO 63+50, SOLID LT & RT
(INCLUDE EDGE LINE BREAKS FOR TOWN HIGHWAYS)

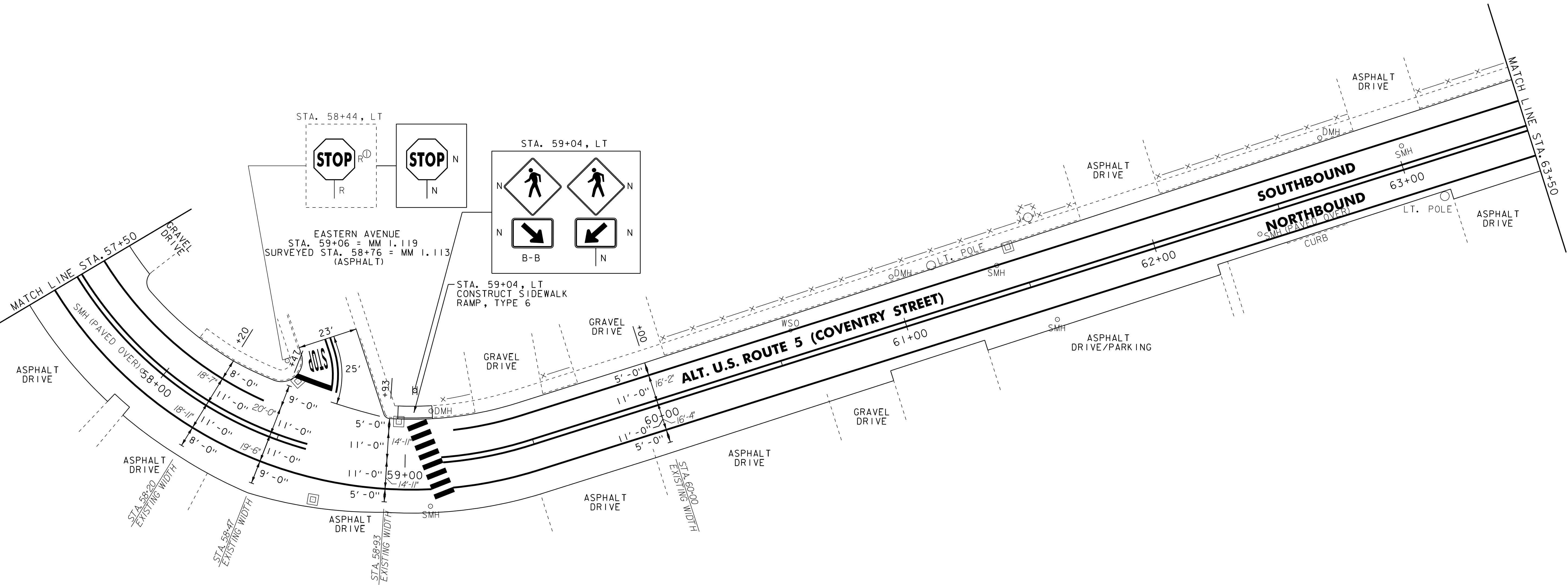
646.612 TEMPORARY 4 INCH YELLOW LINE, PAINT
STA. 57+50 TO 63+50, SOLID LT & RT
(INCLUDE C BREAKS FOR TOWN HIGHWAYS)
STA. 59+06, DOUBLE SOLID LT (EASTERN AVE.)

646.682 TEMPORARY 24 INCH STOP BAR, PAINT
STA. 59+06, LT (EASTERN AVE.)

646.692 TEMPORARY LETTER OR SYMBOL, PAINT
STA. 59+06, LT - "STOP" (EASTERN AVE.)

646.702 TEMPORARY CROSSWALK MARKING, PAINT
STA. 59+04, LT TO 59+15, RT

675.50 REMOVING SIGNS
AS SHOWN - 1



- NOTES:
1. ALL EXISTING SIGNS NOT SHOWN SHALL BE RETAINED.
 2. FOR LEGEND, SEE LAYOUT SHEET #1

NOT TO SCALE

**PROJECT
LAYOUT
SHEET #7**

PROJECT NAME: NEWPORT CITY
PROJECT NUMBER: STP 2719(I)

FILE NAME: 07D202.dgn
PROJECT LEADER: JLL
DESIGNED BY: STANTEC
IPARM FILE: 07D202_I8.i

PLOT DATE: 29-JAN-2013 09:2
DRAWN BY: STANTEC
CHECKED BY: JLL
SHEET 18 OF 62