

203.16 SOLID ROCK EXCAVATION

STA. 7+14 - STA. 7+28 LT
 STA. 7+54 - STA. 7+60 LT
 STA. 9+00 - STA. 9+78 LT
 STA. 9+31 - STA. 9+40 RT

604.40 CHANGING ELEVATION OF DROP INLETS, CATCH BASINS, OR MANHOLES

STA. 6+99 RT (TMH)

604.412, 604.415, 604.418 REHAB, DROP INLETS, CATCH BASINS, OR MANHOLES, CLASS I, CLASS II OR CLASS III

STA. 8+44 RT "TYPE D GRATE"

618.10 PORTLAND CEMENT CONCRETE SIDEWALK, 5 INCH

STA. 7+14 - STA. 7+28 LT
 STA. 7+54 - STA. 7+60 LT
 STA. 9+31 - STA. 9+40 RT
 STA. 9+33 - STA. 9+45 LT

618.30 DETECTABLE WARNING SURFACE

STA. 7+25 LT STA. 9+37 RT
 STA. 7+56 LT STA. 9+39 LT

629.20 ADJUST ELEVATION OF VALVE BOX

STA. 7+48 LT (WSV) STA. 9+47 RT (WSV)

646.406 DURABLE 4" WHITE LINE, RECESSED POLYUREA

STA. 4+75 - STA. 10+75 (SOLID LT & RT)
 (WITH EDGELINE BREAKS AT TOWN ROADS AND CROSSWALKS)
 STA. 8+31 - STA. 8+95 (SOLID RT)
 STA. 8+31 - STA. 8+95 (SOLID RT)

646.602 TEMPORARY 4" WHITE LINE, PAINT

STA. 4+75 - STA. 10+75 (SOLID LT & RT)
 (WITH EDGELINE BREAKS AT TOWN ROADS AND CROSSWALKS)
 STA. 8+31 - STA. 8+60 (SOLID RT)
 STA. 8+31 - STA. 8+60 (SOLID RT)

646.446 DURABLE 8" WHITE LINE, RECESSED POLYUREA

STA. 8+18 - STA. 8+57 (HATCHED RT)
 STA. 9+47 - STA. 9+92 (HATCHED LT)

646.642 TEMPORARY 8" WHITE LINE, PAINT

STA. 8+18 - STA. 8+57 (HATCHED RT)
 STA. 9+47 - STA. 9+92 (HATCHED LT)

646.416 DURABLE 4" YELLOW LINE, RECESSED POLYUREA

STA. 4+75 - STA. 10+75 (SOLID LT & RT, WITH BREAKS AT TOWN ROADS AND CROSSWALKS)
 STA. 7+39 LT (CENTERLINE MARION ST.)
 STA. 9+06 RT (CENTERLINE SOUTH UNION ST.)

646.612 TEMPORARY 4" YELLOW LINE, PAINT

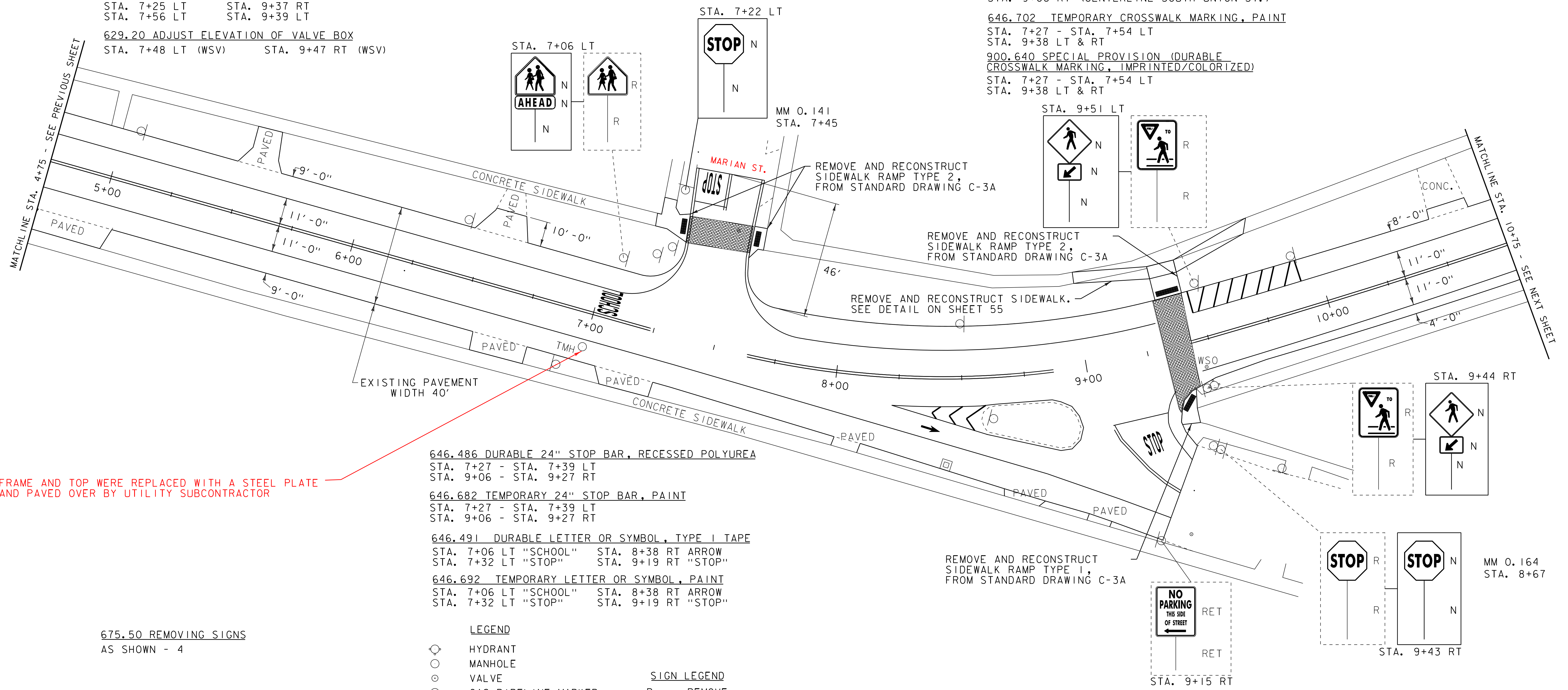
STA. 4+75 - STA. 10+75 (SOLID LT & RT, WITH BREAKS AT TOWN ROADS AND CROSSWALKS)
 STA. 7+39 LT (CENTERLINE MARION ST.)
 STA. 9+06 RT (CENTERLINE SOUTH UNION ST.)

646.702 TEMPORARY CROSSWALK MARKING, PAINT

STA. 7+27 - STA. 7+54 LT
 STA. 9+38 LT & RT

900.640 SPECIAL PROVISION (DURABLE CROSSWALK MARKING, IMPRINTED/COLORIZED)

STA. 7+27 - STA. 7+54 LT
 STA. 9+38 LT & RT



FRAME AND TOP WERE REPLACED WITH A STEEL PLATE AND PAVED OVER BY UTILITY SUBCONTRACTOR

646.486 DURABLE 24" STOP BAR, RECESSED POLYUREA

STA. 7+27 - STA. 7+39 LT
 STA. 9+06 - STA. 9+27 RT

646.682 TEMPORARY 24" STOP BAR, PAINT

STA. 7+27 - STA. 7+39 LT
 STA. 9+06 - STA. 9+27 RT

646.491 DURABLE LETTER OR SYMBOL, TYPE I TAPE

STA. 7+06 LT "SCHOOL" STA. 8+38 RT ARROW
 STA. 7+32 LT "STOP" STA. 9+19 RT "STOP"

646.692 TEMPORARY LETTER OR SYMBOL, PAINT

STA. 7+06 LT "SCHOOL" STA. 8+38 RT ARROW
 STA. 7+32 LT "STOP" STA. 9+19 RT "STOP"

675.50 REMOVING SIGNS AS SHOWN - 4

- LEGEND**
- ⊙ HYDRANT
 - MANHOLE
 - ⊙ VALVE
 - ⊙ GAS PIPELINE MARKER
 - ⊠ CATCH BASIN / DROP INLET
 - CURB INLET
 - ⊠ TRAFFIC CONTROL BOX
 - ⊕ PARKING METER
 - VDZ VIDEO DETECTION ZONE
 - VIDEO CAMERA

- SIGN LEGEND**
- R = REMOVE
 - R&S = REMOVE AND SALVAGE
 - RET = RETAIN
 - S = SALVAGE
 - N = NEW
 - B-B = BACK TO BACK

NOT TO SCALE

PROJECT LAYOUT SHEET 2	PROJECT NAME: BURLINGTON (CLASS I)	PLOT DATE: 05-JUN-2014 11:20
	PROJECT NUMBER: STP 2722 (I)	DRAWN BY: SJL
	FILE NAME: 07d028.dgn	DESIGNED BY: CDL
	PROJECT LEADER: EPD	CHECKED BY: EPD
	PLOT FILE: 07d028_16.1	SHEET 16 OF 61