

TEMPORARY 4 INCH WHITE LINE, PAINT  
 DURABLE 4 INCH WHITE LINE (OPTION BID ITEM)  
 C93+50 TO C93+74 SOLID LT  
 C93+50 TO C93+74 SOLID RT  
 C93+74 TO C93+94 SOLID LT (NO PARKING)  
 C93+74 TO C93+94 SOLID RT (NO PARKING)  
 C94+02 TO C94+22 SOLID RT (NO PARKING)  
 C94+03 TO C98+50 SOLID LT  
 C94+22 TO C94+58 SOLID RT  
 C94+72 TO C95+17 SOLID RT (RIVER RD)  
 C95+32 TO C98+50 SOLID RT

TEMPORARY 4 INCH YELLOW LINE, PAINT  
 DURABLE 4 INCH YELLOW LINE (OPTION BID ITEM)  
 C93+50 TO C93+94 SOLID LT & RT  
 C94+02 TO C94+70 SOLID LT & RT  
 C94+68 TO C94+84 DOUBLE SOLID RT (TH 10)  
 C95+20 TO C95+24 DOUBLE SOLID RT (TH 1)  
 C95+38 TO C98+50 SOLID LT & RT

TEMPORARY 24 INCH STOP BAR, PAINT  
 DURABLE 24 INCH STOP BAR (OPTION BID ITEM)  
 C94+70 RT  
 C95+20 TO C95+31 RT (TH 1)  
 TEMPORARY LETTER OR SYMBOL, PAINT  
 DURABLE LETTER OR SYMBOL (OPTION BID ITEM)  
 C94+62 RT - "STOP"  
 C95+26 RT - "STOP" (TH 1)

TEMPORARY CROSSWALK MARKING, PAINT  
 DURABLE CROSSWALK MARKING (OPTION BID ITEM)  
 C93+98 LT TO RT

REHAB. DROP INLETS, CATCH BASINS,  
 OR MANHOLES, CLASS I, CLASS II, OR CLASS III  
 C94+50 RT  
 C95+31 RT

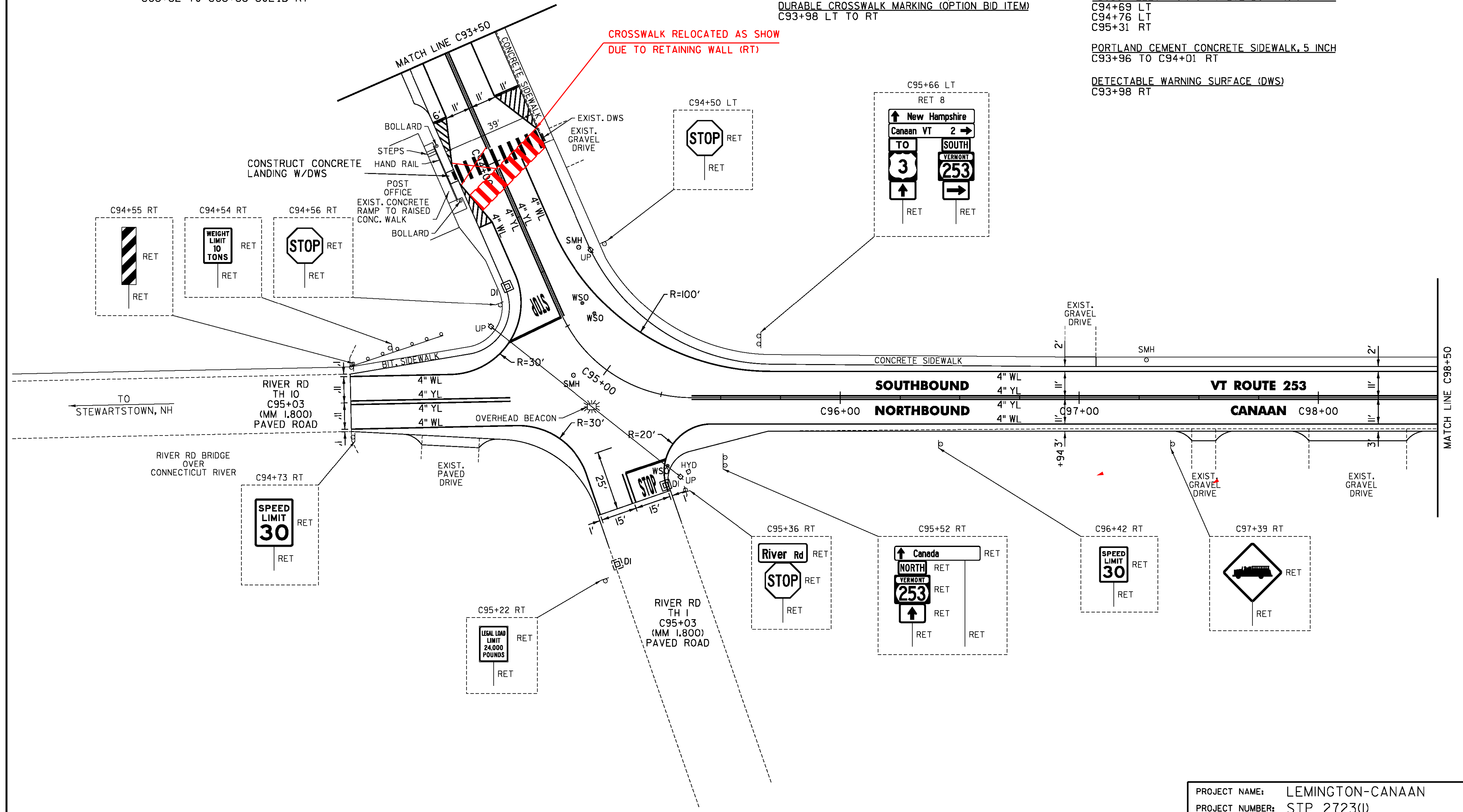
CHANGING ELEVATION  
 OF SEWER MANHOLES (NON-PART)  
 C94+47 LT  
 C94+91 RT

ADJUST ELEVATION OF VALVE BOX (NON-PART)  
 C94+69 LT  
 C94+76 LT  
 C95+31 RT

PORTLAND CEMENT CONCRETE SIDEWALK, 5 INCH  
 C93+96 TO C94+01 RT

DETECTABLE WARNING SURFACE (DWS)  
 C93+98 RT

CROSSWALK RELOCATED AS SHOWN  
 DUE TO RETAINING WALL (RT)



NOT TO SCALE

PROJECT NAME:	LEMINGTON-CANAAN
PROJECT NUMBER:	STP 2723(I)
FILE NAME:	z07c214bdr.dgn
PROJECT LEADER:	P. SHEDD
DESIGNED BY:	N. LEMAY
VT 253 PLAN SHEET I7	
PLOT DATE:	2/28/2015
DRAWN BY:	W. GORDON
CHECKED BY:	P. SHEDD
SHEET	140 OF 162