

TEMPORARY 4 INCH WHITE LINE, PAINT  
 DURABLE 4 INCH WHITE LINE (OPTION BID ITEM)  
 438+50 TO 439+30 SOLID LT  
 438+50 TO 440+30 SOLID RT  
 439+30 TO 439+61 SOLID LT (TH 11)  
 439+97 TO 440+28 SOLID LT (TH 11)  
 440+28 TO 440+31 SOLID LT

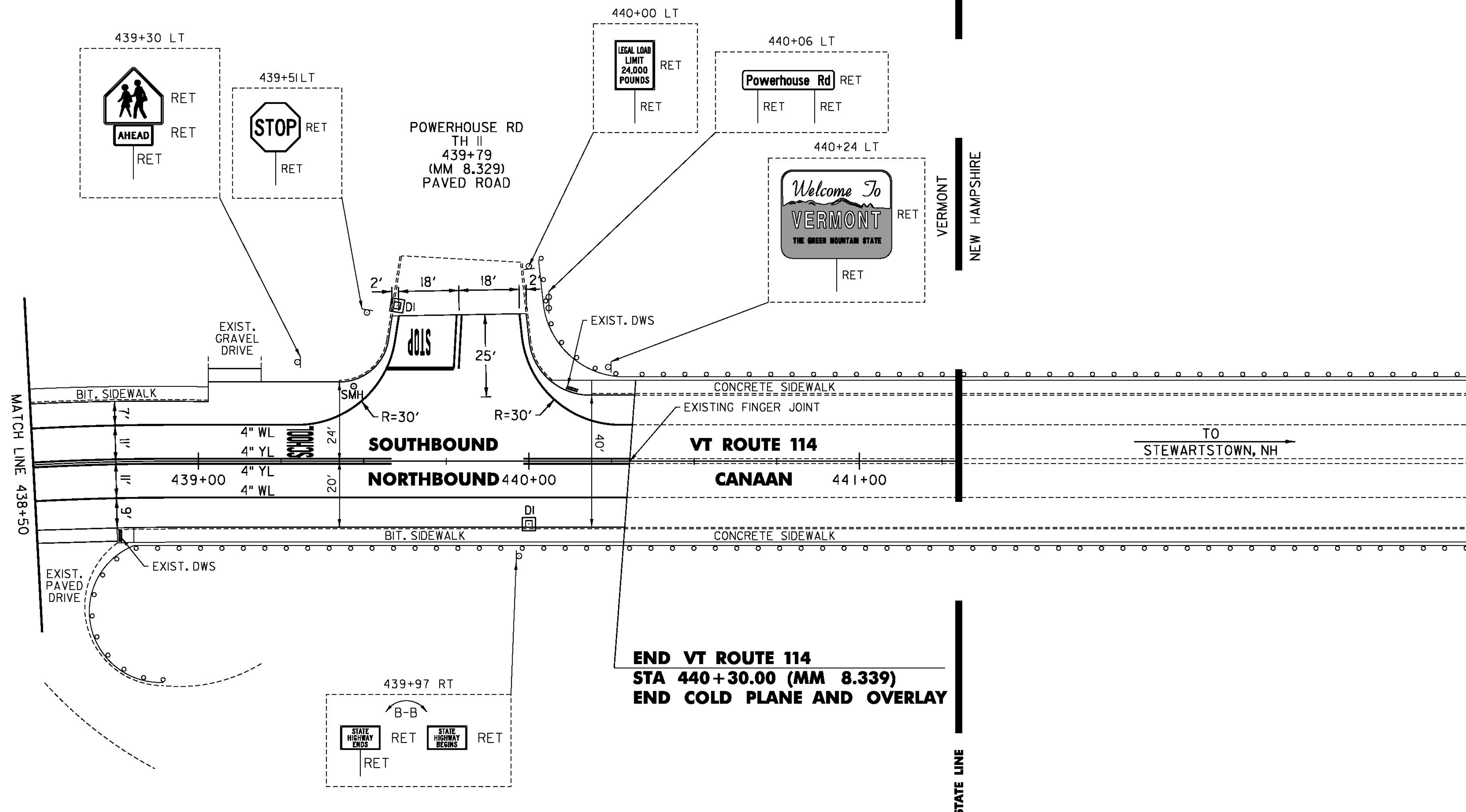
TEMPORARY 4 INCH YELLOW LINE, PAINT  
 DURABLE 4 INCH YELLOW LINE (OPTION BID ITEM)  
 438+50 TO 439+59 SOLID LT & RT  
 439+78 TO 439+80 DOUBLE SOLID LT (TH 11)  
 439+99 TO 430+31 SOLID LT & RT

TEMPORARY LETTER OR SYMBOL, PAINT  
 DURABLE LETTER OR SYMBOL (OPTION BID ITEM)  
 439+30 LT - 'SCHOOL'  
 439+67 LT - 'STOP' (TH 11)

TEMPORARY 24 INCH STOP BAR, PAINT  
 DURABLE 24 INCH STOP BAR (OPTION BID ITEM)  
 439+57 TO 439+77 LT (TH 11)

REHAB. DROP INLETS, CATCH BASINS,  
 OR MANHOLES, CLASS I, CLASS II, OR CLASS III  
 440+00 RT

CHANGING ELEVATION  
 OF SEWER MANHOLES (NON-PART)  
 439+47 LT



**END VT ROUTE 114**  
**STA 440+30.00 (MM 8.339)**  
**END COLD PLANE AND OVERLAY**

NOT TO SCALE

PROJECT NAME:	LEMINGTON-CANAAN
PROJECT NUMBER:	STP 2723(I)
FILE NAME:	z07c2i4bdr.dgn
PROJECT LEADER:	P. SHEDD
DESIGNED BY:	N. LEMAY
VT 114 PLAN SHEET 7	
PLOT DATE:	2/28/2015
DRAWN BY:	W. GORDON
CHECKED BY:	P. SHEDD
SHEET	123 OF 162