

604.412, 604.415 OR 604.418 REHAB.  
Dis. CBS OR MHS, CLASS I, II OR III  
STA. 50+55, RT  
STA. 50+72, LT

604.42 CHANGING ELEVATION OF SEWER MANHOLES  
STA. 51+93, LT

618.10 PORTLAND CEMENT CONCRETE SIDEWALK, 5 INCH  
STA. 51+35, LT

618.30 DETECTABLE WARNING SURFACE  
STA. 51+35, LT

629.20 ADJUST ELEVATION OF VALVE BOX  
STA. 51+56, RT  
STA. 51+59, RT

646.402 DURABLE 4 INCH WHITE LINE, THERMOPLASTIC  
STA. 48+50 TO 54+50, SOLID LT & RT  
STA. 51+68, DOUBLE SOLID RT (SCHOOL ST. EDGELINES)

646.412 DURABLE 4 INCH YELLOW LINE, THERMOPLASTIC  
(ALL LINES WILL INCLUDE C BREAKS FOR SIDE ROADS)  
STA. 48+50 TO 54+50, SOLID LT & RT  
STA. 51+68, DOUBLE SOLID RT (SCHOOL ST.)

646.482 DURABLE 24 INCH STOP BAR, THERMOPLASTIC  
STA. 51+70, RT (SCHOOL ST.)

646.492 DURABLE LETTER OR SYMBOL, THERMOPLASTIC  
STA. 51+79, RT - "STOP"

646.502 DURABLE CROSSWALK MARKING, THERMOPLASTIC  
STA. 48+87, LT & RT  
STA. 51+35, LT & RT  
STA. 51+44 TO 51+96, RT

646.602 TEMPORARY 4 INCH WHITE LINE, PAINT  
STA. 48+50 TO 54+50, SOLID LT & RT  
STA. 51+68, DOUBLE SOLID RT (SCHOOL ST. EDGELINES)

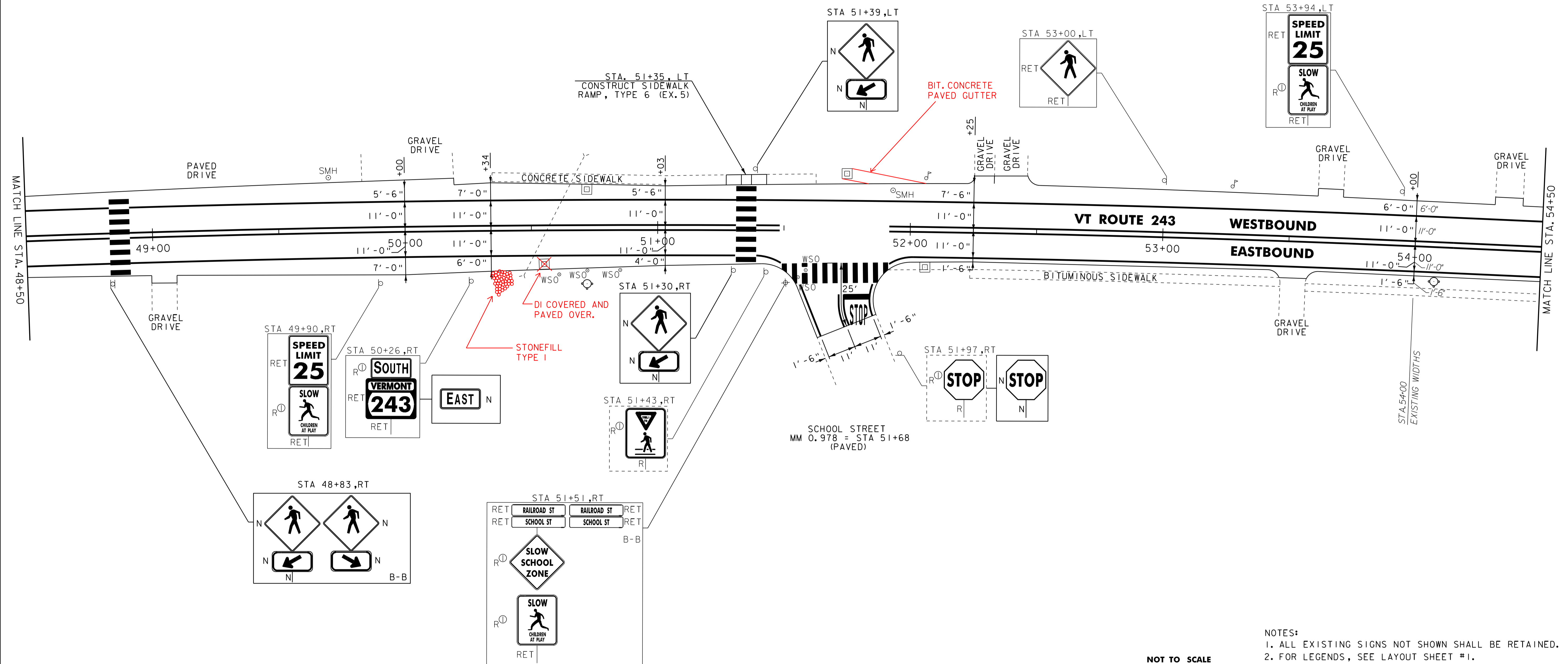
646.612 TEMPORARY 4 INCH YELLOW LINE, PAINT  
(ALL LINES WILL INCLUDE C BREAKS FOR SIDE ROADS)  
STA. 48+50 TO 54+50, SOLID LT & RT

646.682 TEMPORARY 24 INCH STOP BAR, PAINT  
STA. 51+70, RT (SCHOOL ST.)

646.692 TEMPORARY LETTER OR SYMBOL, PAINT  
STA. 51+79, RT - "STOP"

646.702 TEMPORARY CROSSWALK MARKING, PAINT  
STA. 48+87, LT & RT  
STA. 51+35, LT & RT  
STA. 51+44 TO 51+96, RT

675.50 REMOVING SIGNS  
AS SHOWN - 7



NOTES:  
1. ALL EXISTING SIGNS NOT SHOWN SHALL BE RETAINED.  
2. FOR LEGENDS, SEE LAYOUT SHEET #1.



<b>PROJECT LAYOUT SHEET #9</b>	PROJECT NAME: NORTH TROY	PLOT DATE: 25-OCT-2011 14:04
	PROJECT NUMBER: STP 2620(1)	DRAWN BY: STANTEC
	FILE NAME: p06b208.dgn	CHECKED BY: JLL
	DESIGNED BY: MCF	SHEET 93 OF 116
IPARM FILE: p06b208i09.i		