

604.412, 604.415 OR 604.418 REHAB,
DIS. CBS OR MHS, CLASS I, II OR III
VT 105 STA. 144+92, LT

604.42 CHANGING ELEVATION OF SEWER MANHOLES
VT 105 STA. 146+21, LT
VT 105 STA. 148+66, LT

629.20 ADJUST ELEVATION OF VALVE BOX
VT 105 STA. 148+57, RT

646.402 DURABLE 4 INCH WHITE LINE, THERMOPLASTIC
(ALL LINES WILL INCLUDE EDGE LINE AND LANE LINE
BREAKS AND RADII FOR SIDE ROADS)
VT 105 STA. 143+50 TO 149+00, SOLID LT & RT
VT 243 STA. 60+50 TO 62+24, SOLID LT & RT

646.412 DURABLE 4 INCH YELLOW LINE, THERMOPLASTIC
(ALL LINES WILL INCLUDE C BREAKS FOR SIDE ROADS)
VT 105 STA. 143+50 TO 149+00, SOLID LT & RT
VT 243 STA. 60+50 TO 62+21, SOLID LT & RT

646.482 DURABLE 24 INCH STOP BAR, THERMOPLASTIC
VT 243 STA. 62+20, RT

646.492 DURABLE LETTER OR SYMBOL, THERMOPLASTIC
VT 243 STA. 62+11, RT - "STOP"

646.502 DURABLE CROSSWALK MARKING, THERMOPLASTIC
VT 105 STA. 145+81, LT & RT
VT 105 STA. 148+44 TO 148+62, RT

646.602 TEMPORARY 4 INCH WHITE LINE, PAINT
(ALL LINES WILL INCLUDE EDGE LINE AND LANE LINE
BREAKS AND RADII FOR SIDE ROADS)
VT 105 STA. 143+50 TO 149+00, SOLID LT & RT
VT 243 STA. 60+50 TO 62+24, SOLID LT & RT

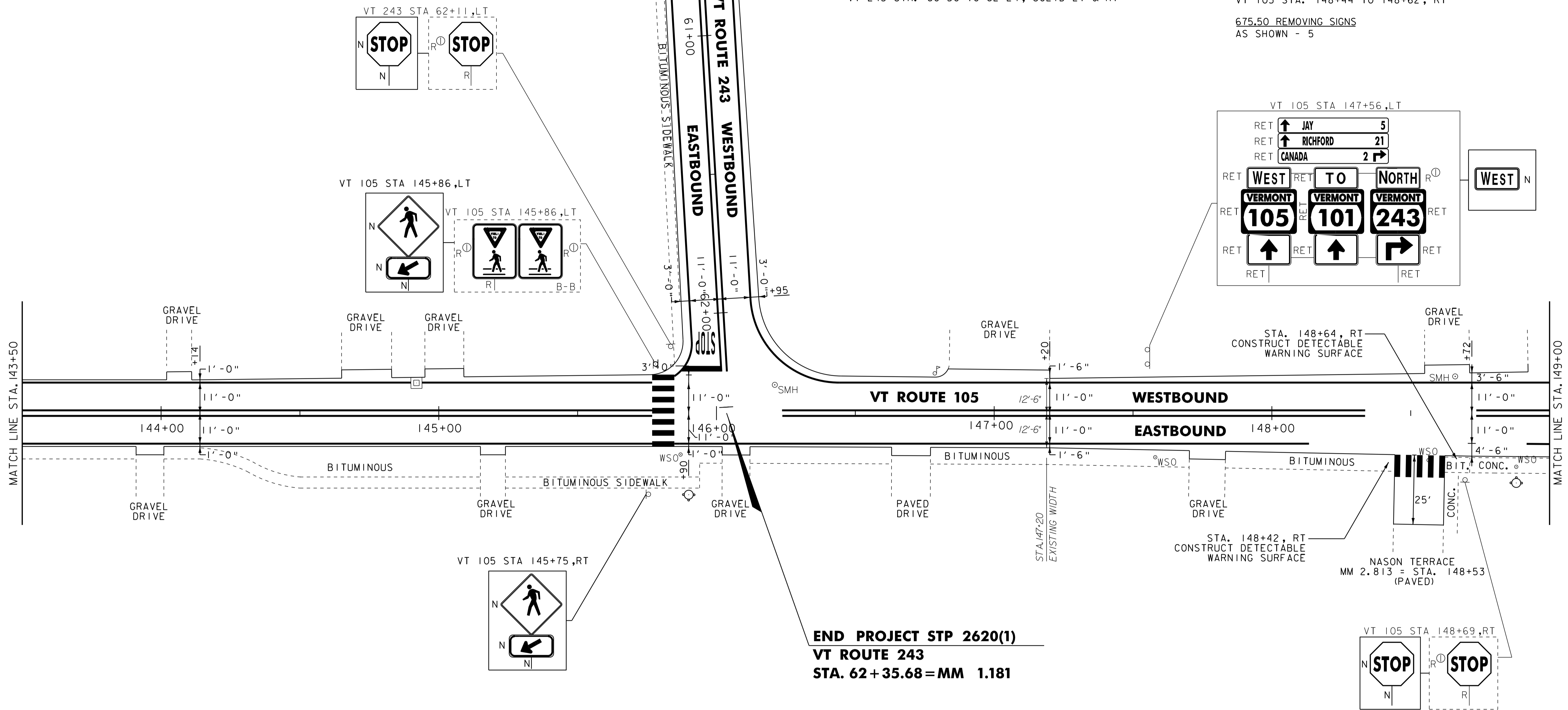
646.612 TEMPORARY 4 INCH YELLOW LINE, PAINT
(ALL LINES WILL INCLUDE C BREAKS FOR SIDE ROADS)
VT 105 STA. 143+50 TO 149+00, SOLID LT & RT
VT 243 STA. 60+50 TO 62+21, SOLID LT & RT

646.682 TEMPORARY 24 INCH STOP BAR, PAINT
VT 243 STA. 62+20, RT

646.692 TEMPORARY LETTER OR SYMBOL, PAINT
VT 243 STA. 62+11, RT - "STOP"

646.702 TEMPORARY CROSSWALK MARKING, PAINT
VT 105 STA. 145+81, LT & RT
VT 105 STA. 148+44 TO 148+62, RT

675.50 REMOVING SIGNS
AS SHOWN - 5



END PROJECT STP 2620(1)
VT ROUTE 243
STA. 62+35.68 = MM 1.181

- NOTES:
1. ALL EXISTING SIGNS NOT SHOWN SHALL BE RETAINED.
2. FOR LEGENDS, SEE LAYOUT SHEET #1.



NOT TO SCALE

PROJECT LAYOUT SHEET #4

PROJECT NAME: NORTH TROY	PLOT DATE: 25-OCT-2011 14:03
PROJECT NUMBER: STP 2620(1)	DRAWN BY: STANTEC
FILE NAME: p06b208.dgn	CHECKED BY: JLL
DESIGNED BY: MCF	SHEET 88 OF 116
IPARM FILE: p06b208i04.i	