

646.402 DURABLE 4 INCH WHITE LINE, THERMOPLASTIC  
 STA. 20+50 TO 25+50, SOLID LT & RT  
 (INCLUDING EDGE LINE BREAKS FOR TOWN HIGHWAYS)

646.412 DURABLE 4 INCH YELLOW LINE, THERMOPLASTIC  
 STA. 20+50 TO 25+50, SOLID LT & RT  
 (INCLUDING  $\frac{1}{4}$  BREAKS FOR TOWN HIGHWAYS)

646.482 DURABLE 24 INCH STOP BAR, THERMOPLASTIC  
 STA. 22+31, RT

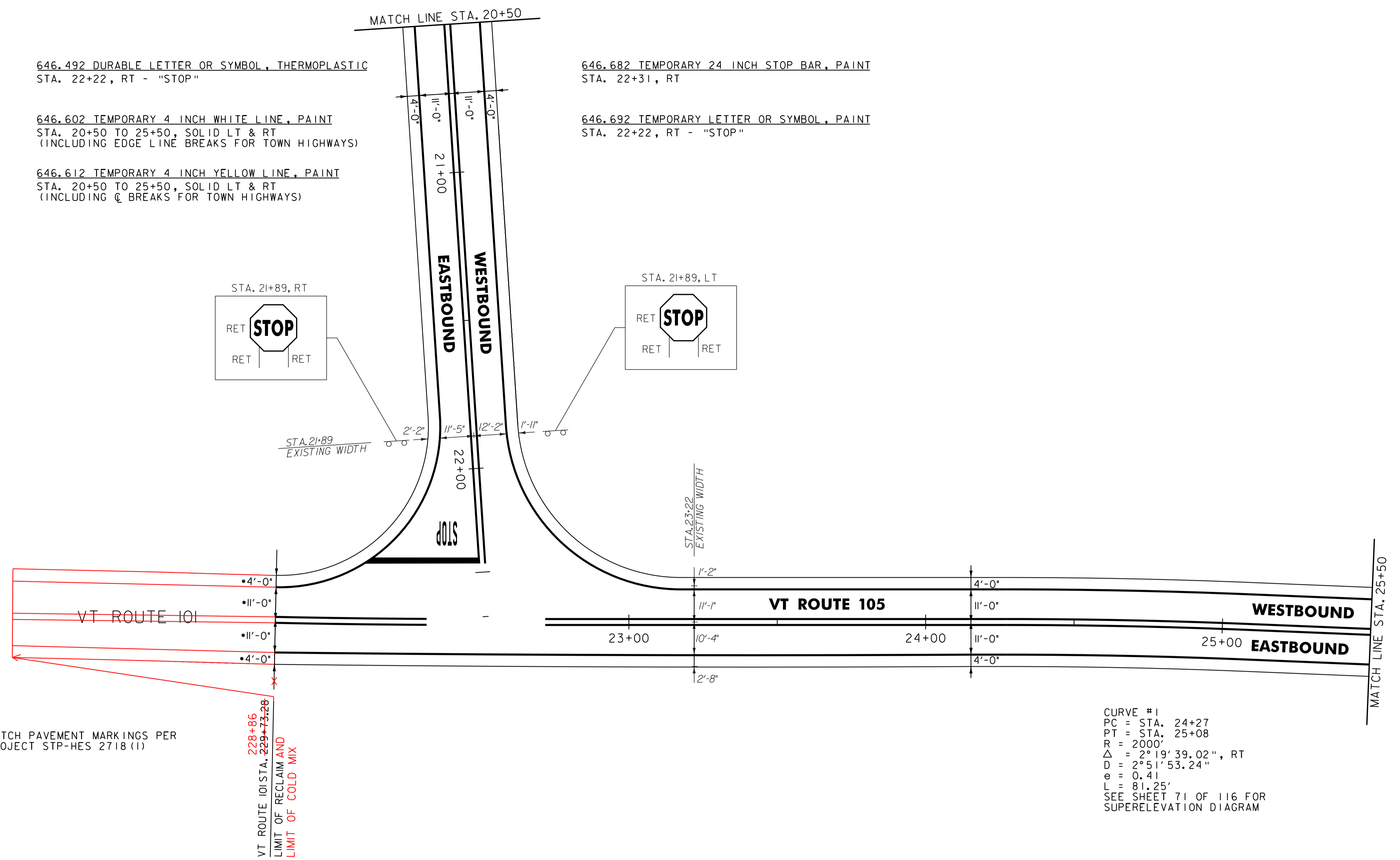
646.492 DURABLE LETTER OR SYMBOL, THERMOPLASTIC  
 STA. 22+22, RT - "STOP"

646.602 TEMPORARY 4 INCH WHITE LINE, PAINT  
 STA. 20+50 TO 25+50, SOLID LT & RT  
 (INCLUDING EDGE LINE BREAKS FOR TOWN HIGHWAYS)

646.612 TEMPORARY 4 INCH YELLOW LINE, PAINT  
 STA. 20+50 TO 25+50, SOLID LT & RT  
 (INCLUDING  $\frac{1}{4}$  BREAKS FOR TOWN HIGHWAYS)

646.682 TEMPORARY 24 INCH STOP BAR, PAINT  
 STA. 22+31, RT

646.692 TEMPORARY LETTER OR SYMBOL, PAINT  
 STA. 22+22, RT - "STOP"



\* MATCH PAVEMENT MARKINGS PER  
 PROJECT STP-HES 2718 (1)

228+86  
 229+73.28  
 VT ROUTE 101 STA.  
 LIMIT OF RECLAIM AND  
 LIMIT OF COLD MIX

CURVE #1  
 PC = STA. 24+27  
 PT = STA. 25+08  
 R = 2000'  
 $\Delta$  = 2° 19' 39.02", RT  
 D = 2° 51' 53.24"  
 e = 0.41  
 L = 81.25'  
 SEE SHEET 71 OF 116 FOR  
 SUPERELEVATION DIAGRAM

- NOTES:
1. ALL EXISTING SIGNS NOT SHOWN SHALL BE RETAINED.
  2. FOR LEGENDS, SEE LAYOUT SHEET #1

NOT TO SCALE



**PROJECT  
 LAYOUT  
 SHEET #3**

PROJECT NAME: TROY	PLOT DATE: 25-OCT-2011 4:01
PROJECT NUMBER: STP 2717(1)	DRAWN BY: STANTEC
FILE NAME: p07b198.dgn	CHECKED BY: JLL
PROJECT LEADER: JLL	SHEET 58 OF 116
DESIGNED BY: STANTEC	
<b>IPARM FILE: p07b198i03.i</b>	