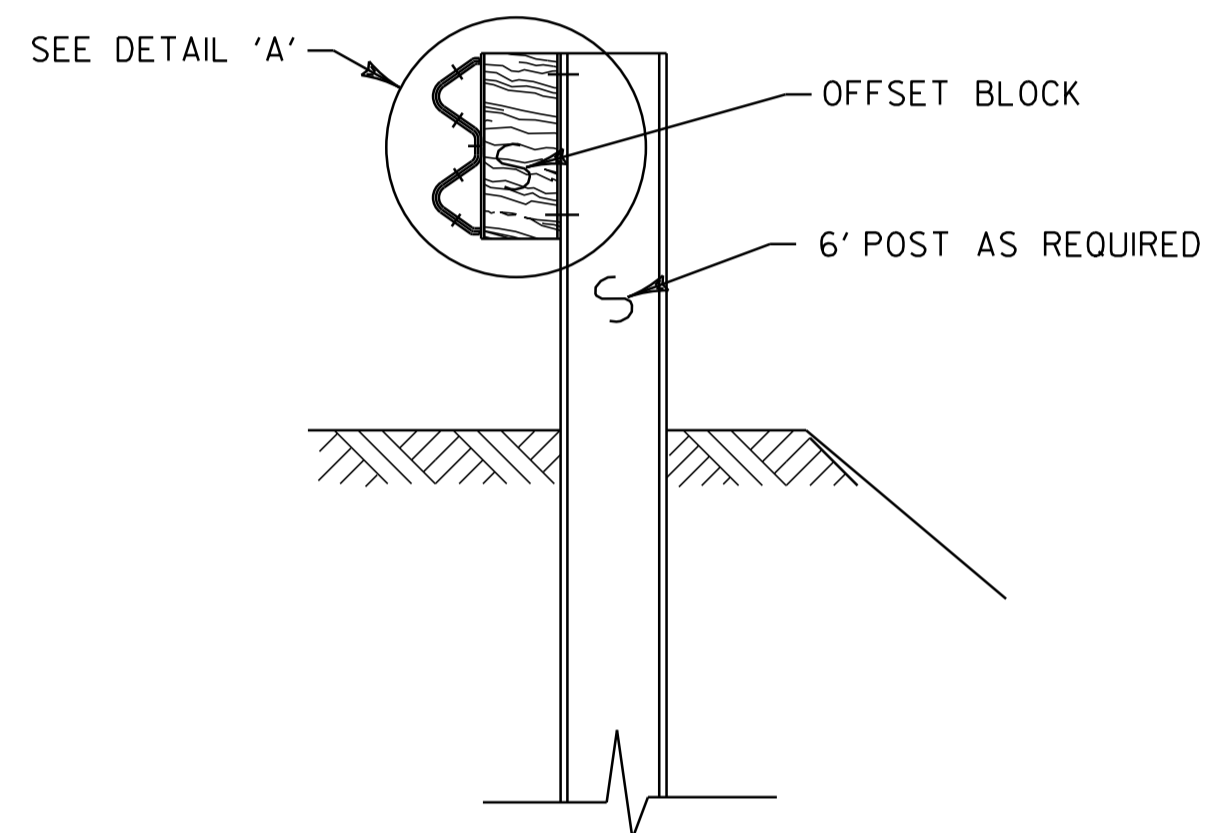
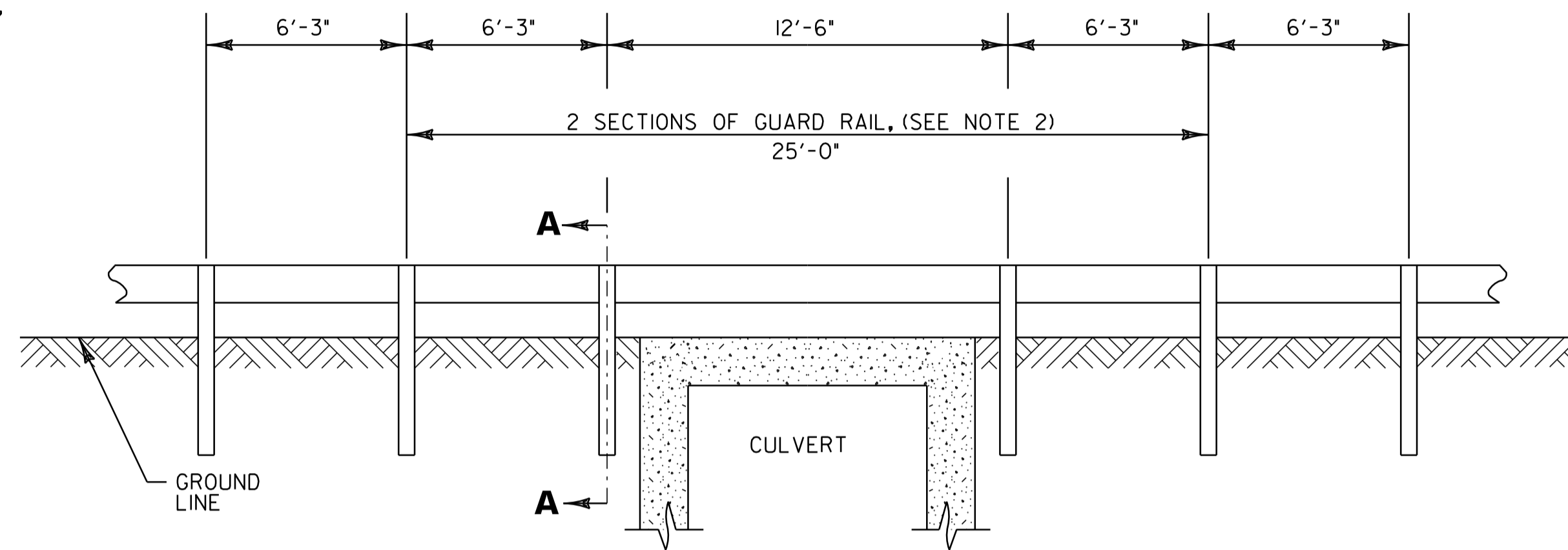


2 SECTIONS OF STEEL BEAM GUARD RAIL,
GALVANIZED/NESTED OR HD STEEL BEAM GUARD RAIL,
GALVANIZED/NESTED (ONE SECTION INSIDE THE OTHER)

DETAIL A



SECTION A-A



**DETAIL OF STEEL BEAM GUARD
RAIL AT LARGE CULVERTS (BRIDGE #53)**

VT ROUTE 105, TROY STA. 27+36, RT (ITEM 62L206)
VT ROUTE 105, TROY STA. 27+44, LT (ITEM 62L216)

NOTES:

1. SEE VAOT STANDARDS G-1 & G-1d FOR STEEL BEAM GUARD RAIL DETAILS
2. THIS WORK SHALL BE PAID UNDER ITEM 62L206, STEEL BEAM GUARDRAIL, GALVANIZED/NESTED FOR THE RIGHT SIDE, AND ITEM 62L216, HD STEEL BEAM GUARDRAIL, GALVANIZED/NESTED FOR THE LEFT SIDE.
3. THIS DETAIL TO BE USED AS INDICATED ON THE ITEM DETAIL SUMMARY SHEET OR AS DIRECTED BY THE RESIDENT ENGINEER.

THIS DETAIL WAS NOT NEEDED OR
USED FOR THIS PROJECT.

NOT TO SCALE



**GUARDRAIL
DETAIL SHEET**

PROJECT NAME: TROY	PLOT DATE: 25-OCT-2011 4:01
PROJECT NUMBER: STP 2717(I)	DRAWN BY: STANTEC
FILE NAME: p07b198.dgn	CHECKED BY: JLL
PROJECT LEADER: JLL	SHEET 50 OF 116
DESIGNED BY: STANTEC	
IPARM FILE: p07b198gcds.i	