

604.412, 604.415, OR 604.418 REHAB. D.I.'S, CB'S OR MH'S, CLASS I, II OR III
 VT RTE 101 APPROACH STA. A1+14, LT 2+40 LT

604.42 CHANGING ELEVATION OF SEWER MANHOLES
 STA. 2+80, LT
 STA. 2+86, LT
 STA. 0+80 LT
 629.20 ADJUST ELEVATION OF VALVE BOX
 STA. 2+69, LT
 STA. 2+74, LT
 STA. 2+87, LT

646.402 DURABLE 4 INCH WHITE LINE, THERMOPLASTIC
 VT RTE 101 APP. STA. A 0+13 TO A 2+30, SOLID LT & RT
 STA. 0+50, DOUBLE SOLID LT (MILL ST)
 STA. 0+53 TO 4+00, SOLID LT & RT
 STA. 2+69, DOUBLE SOLID LT (SO. PLEASANT ST)

646.482 DURABLE 24 INCH STOP BAR, THERMOPLASTIC
 VT RTE 101 APP. STA. A 0+26 LT
 VT RTE 101 APP. STA. A 1+67 TO A 1+89, RT
 STA. 0+62 TO 0+96, RT
 STA. 0+62, LT (MILL ST)
 STA. 2+69, LT (S. PLEASANT ST)

646.412 DURABLE 4 INCH YELLOW LINE, THERMOPLASTIC
 VT RTE 101 APP. STA. A 0+25 TO A 1+90, SOLID LT & RT
 STA. 0+95 TO 4+00, DOUBLE SOLID RT
 (ALL LINES WILL INCLUDE C BREAKS FOR SIDE ROADS)
 STA. 0+50, DOUBLE SOLID LT (MILL ST)
 STA. 2+69, DOUBLE SOLID LT (S. PLEASANT ST)

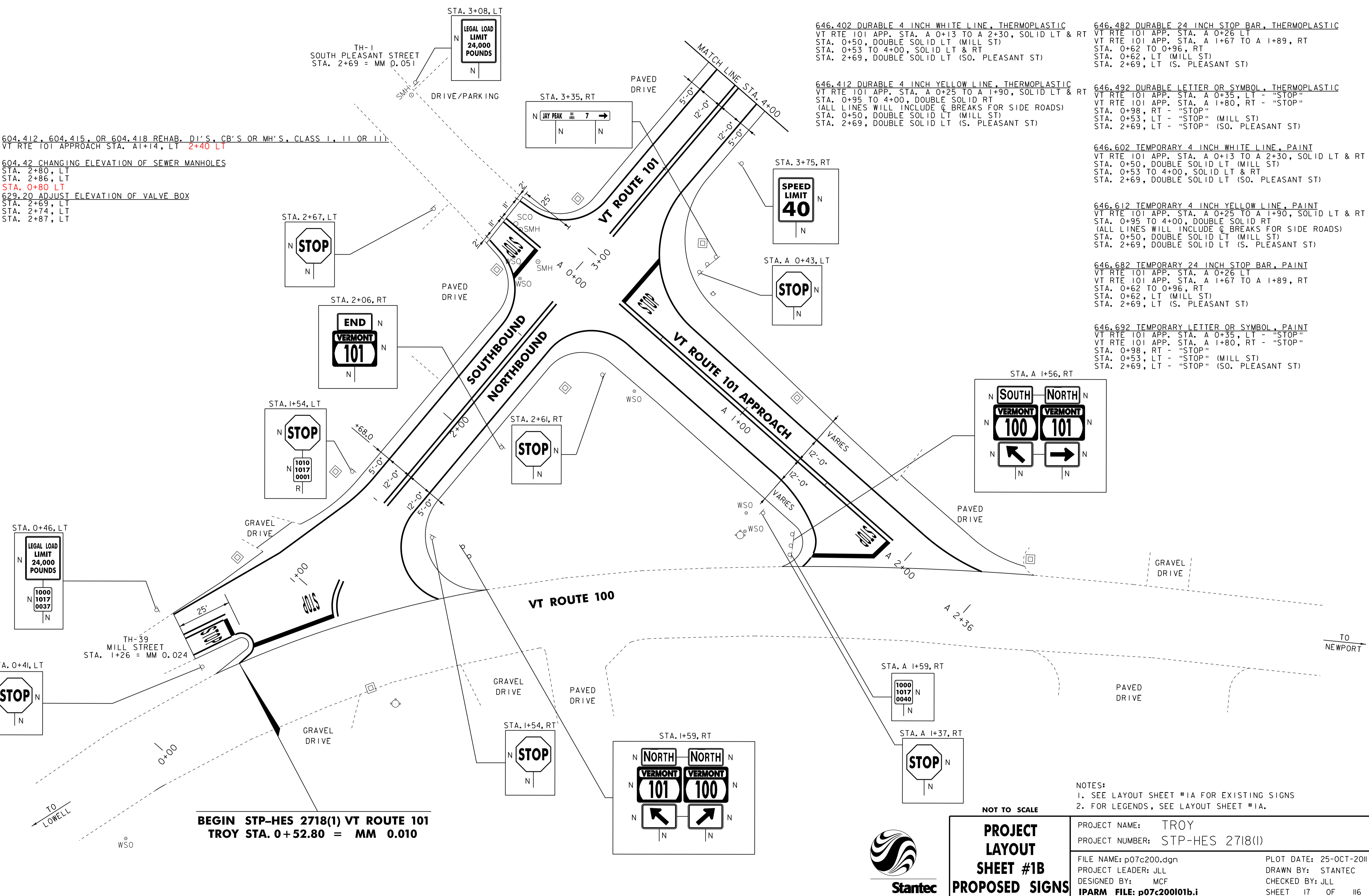
646.492 DURABLE LETTER OR SYMBOL, THERMOPLASTIC
 VT RTE 101 APP. STA. A 0+35, LT - "STOP"
 VT RTE 101 APP. STA. A 1+80, RT - "STOP"
 STA. 0+98, RT - "STOP"
 STA. 0+53, LT - "STOP" (MILL ST)
 STA. 2+69, LT - "STOP" (SO. PLEASANT ST)

646.602 TEMPORARY 4 INCH WHITE LINE, PAINT
 VT RTE 101 APP. STA. A 0+13 TO A 2+30, SOLID LT & RT
 STA. 0+50, DOUBLE SOLID LT (MILL ST)
 STA. 0+53 TO 4+00, SOLID LT & RT
 STA. 2+69, DOUBLE SOLID LT (SO. PLEASANT ST)

646.612 TEMPORARY 4 INCH YELLOW LINE, PAINT
 VT RTE 101 APP. STA. A 0+25 TO A 1+90, SOLID LT & RT
 STA. 0+95 TO 4+00, DOUBLE SOLID RT
 (ALL LINES WILL INCLUDE C BREAKS FOR SIDE ROADS)
 STA. 0+50, DOUBLE SOLID LT (MILL ST)
 STA. 2+69, DOUBLE SOLID LT (S. PLEASANT ST)

646.682 TEMPORARY 24 INCH STOP BAR, PAINT
 VT RTE 101 APP. STA. A 0+26 LT
 VT RTE 101 APP. STA. A 1+67 TO A 1+89, RT
 STA. 0+62 TO 0+96, RT
 STA. 0+62, LT (MILL ST)
 STA. 2+69, LT (S. PLEASANT ST)

646.692 TEMPORARY LETTER OR SYMBOL, PAINT
 VT RTE 101 APP. STA. A 0+35, LT - "STOP"
 VT RTE 101 APP. STA. A 1+80, RT - "STOP"
 STA. 0+98, RT - "STOP"
 STA. 0+53, LT - "STOP" (MILL ST)
 STA. 2+69, LT - "STOP" (SO. PLEASANT ST)



**BEGIN STP-HES 2718(1) VT ROUTE 101
 TROY STA. 0+52.80 = MM 0.010**

NOTES:
 1. SEE LAYOUT SHEET #1A FOR EXISTING SIGNS
 2. FOR LEGENDS, SEE LAYOUT SHEET #1A.



**PROJECT LAYOUT SHEET #1B
 PROPOSED SIGNS**

PROJECT NAME: TROY	PLOT DATE: 25-OCT-2011 13:59
PROJECT NUMBER: STP-HES 2718(1)	DRAWN BY: STANTEC
FILE NAME: p07c200.dgn	CHECKED BY: JLL
DESIGNED BY: MCF	SHEET 17 OF 116
IPARM FILE: p07c200i01b.i	