

GPS CONTROL POINTS

HVCTRL #1

BARTON AZ MK  
 NORTH = 840479.720  
 EAST = 1714921.810  
 ELEV. = 842.110

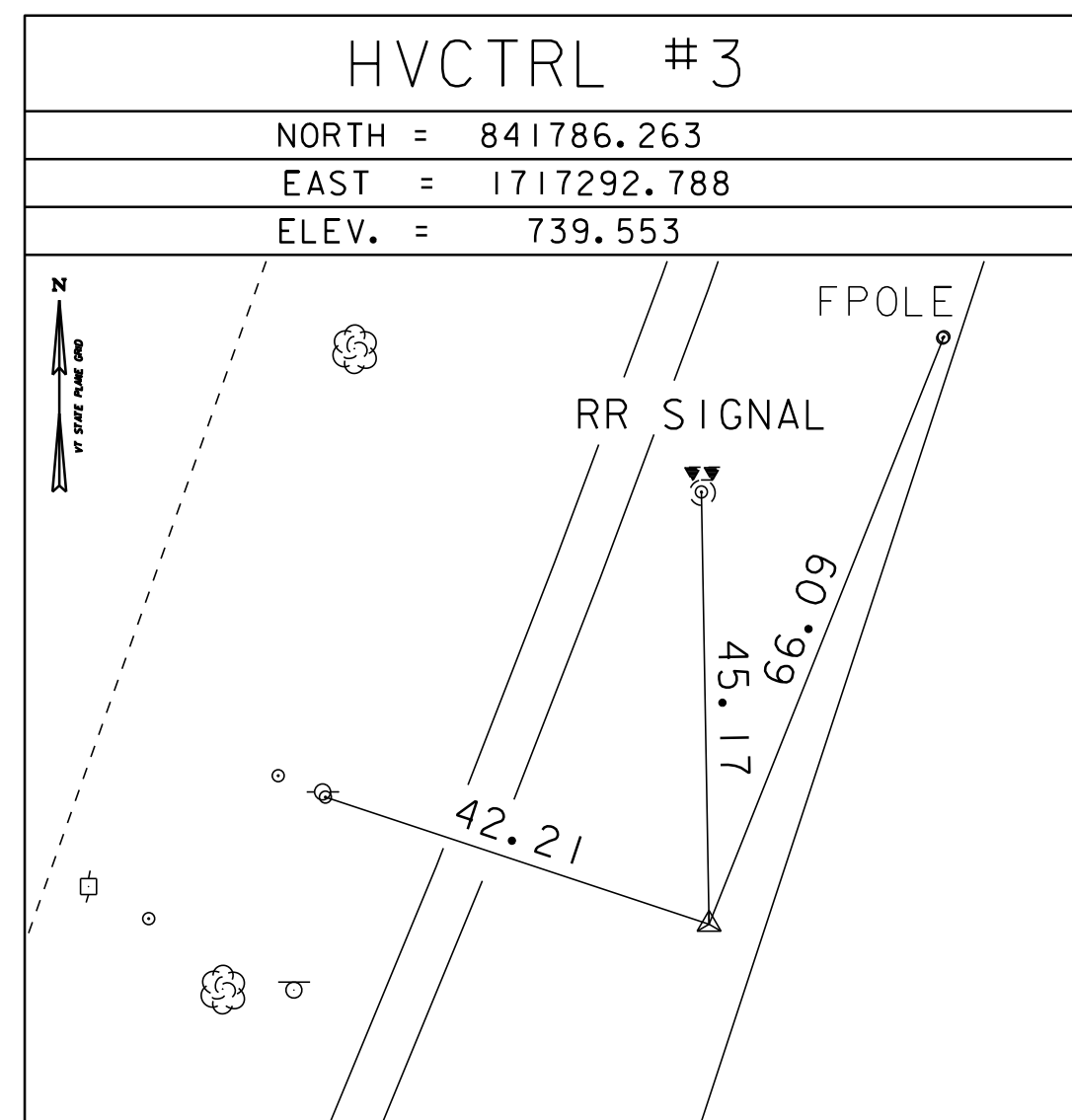
BARTON, VERMONT. IN THE 191 MEDIAN, 10.5 M SOUTHEAST OF AND ABOUT 0.7 M LOWER THAN THE EDGE OF PAVEMENT OF THE SB LANE, 18.1 M NORTHWEST OF THE EDGE OF PAVEMENT OF THE NB LANE, 91.9 M SOUTH-SOUTHWEST OF THE SOUTHWEST CORNER OF THE SB BRIDGE ABUTMENT OVER ROUTES 5 AND 58, 96.3 M SOUTHWEST OF THE SOUTHWEST CORNER OF THE NB BRIDGE ABUTMENT OVER ROUTES 5 AND 58, 9.9 M SOUTH OF THE CENTER OF A 60 CM METAL DRAIN, 8.3 M WEST OF THE CENTER OF A 60 CM METAL DRAIN, AND 4.5 M NORTHEAST OF A WITNESS POST

HVCTRL #2

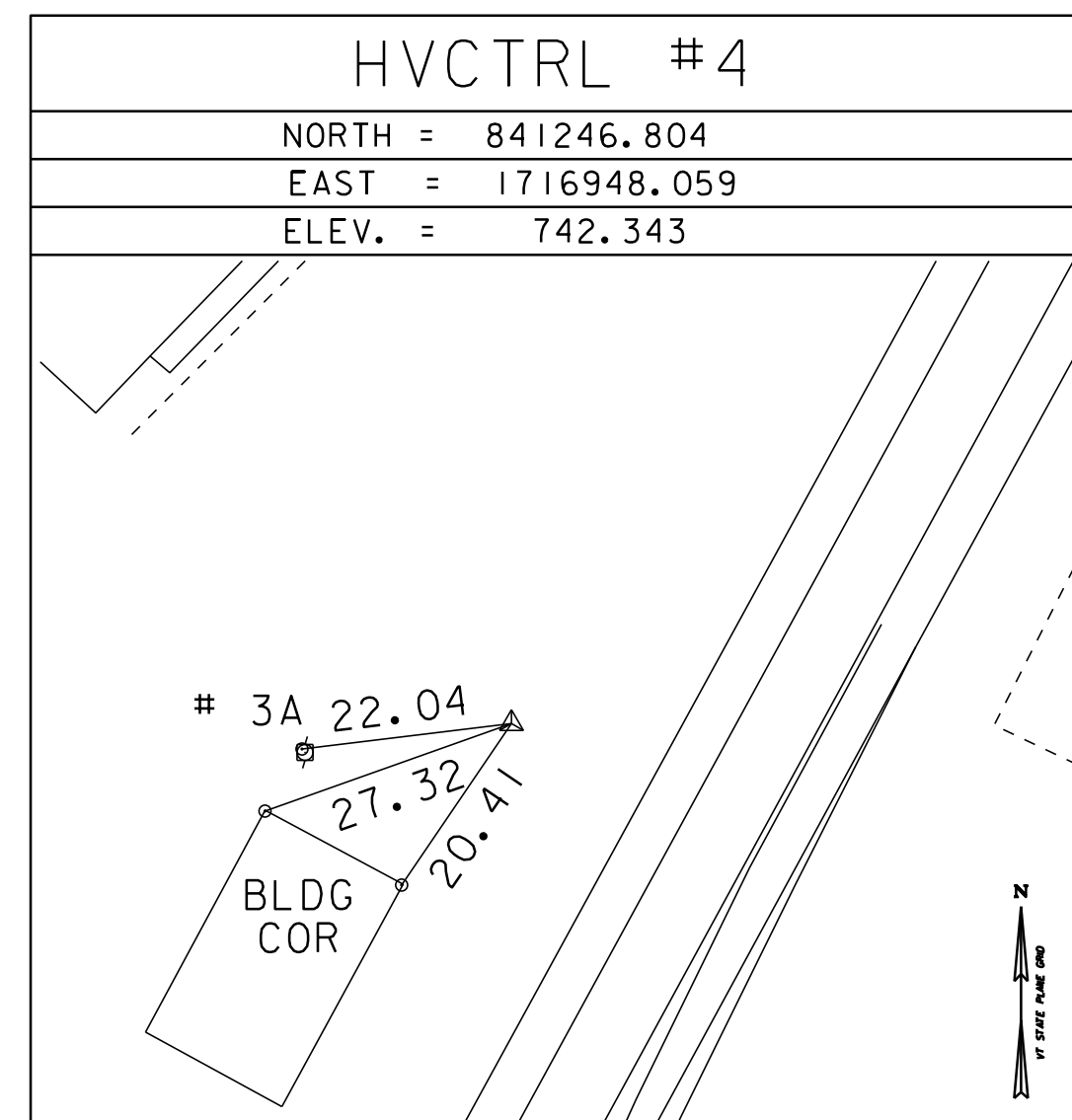
BARTON  
 NORTH = 841378.957  
 EAST = 1716253.530  
 ELEV. = 779.800

BARTON, VT. SOUTHWEST OF THE VILLAGE OF ORLEANS. ABOUT 30 M NORTHEAST OF THE ROUTE 5 AND ROUTE 58 INTERSECTION. 12.1 M (39.7 FT) NORTH OF AND ABOUT 4.0 M (13.1 FT) HIGHER THAN THE NORTH EDGE OF PAVEMENT OF VT ROUTE 58, 16.2 M (53.1 FT) NORTHEAST OF A WOODEN STRAIN POLE, 5.6 M (18.4 FT) SOUTH-SOUTHWEST OF A 25 CM (10 INCH) PINE, AND 4.9 M (16.1 FT) SOUTH-SOUTHWEST OF A FIBERGLASS WITNESS POST IN THE RIGHT-OF-WAY FENCE.

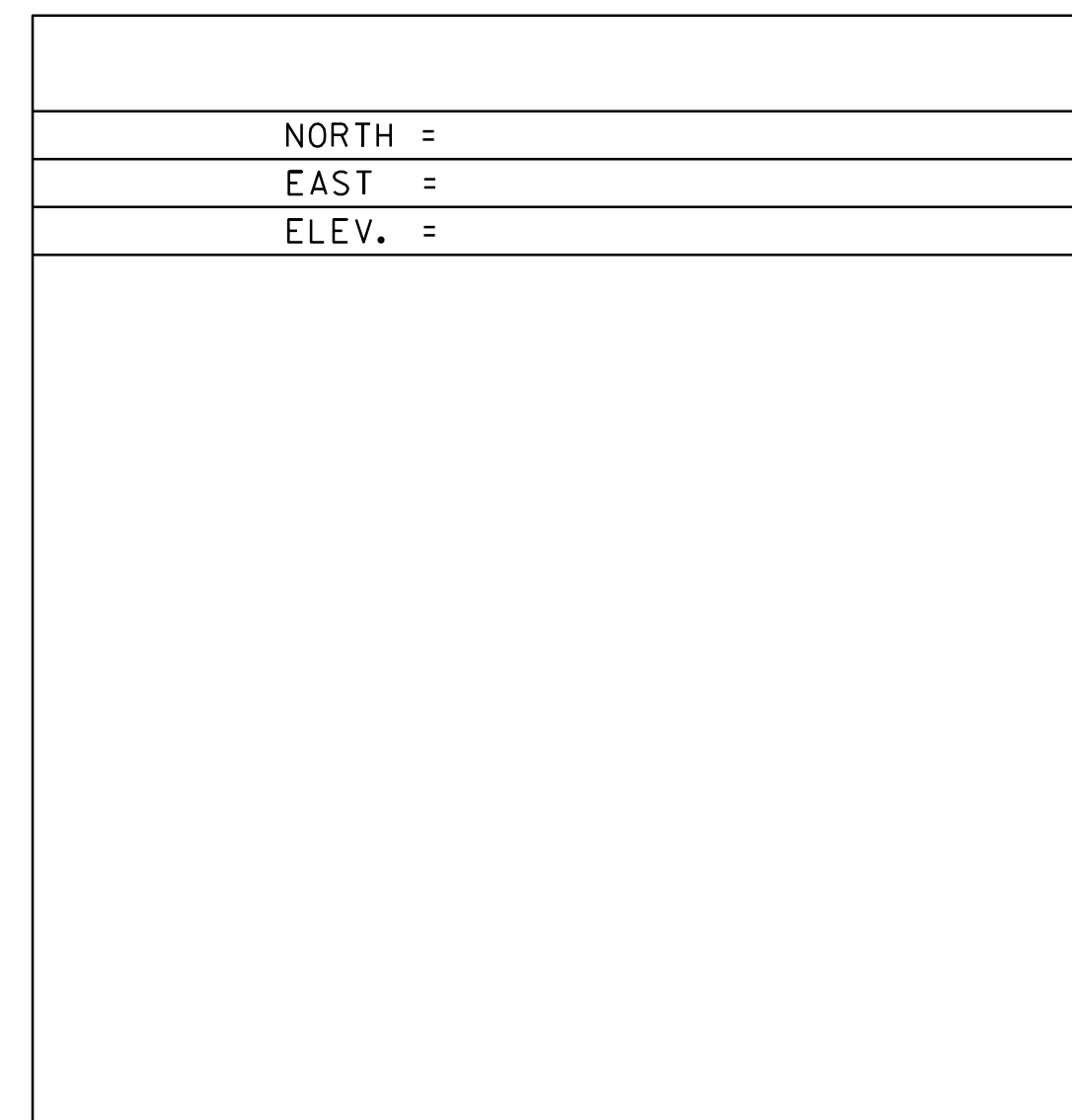
TRAVERSE TIES



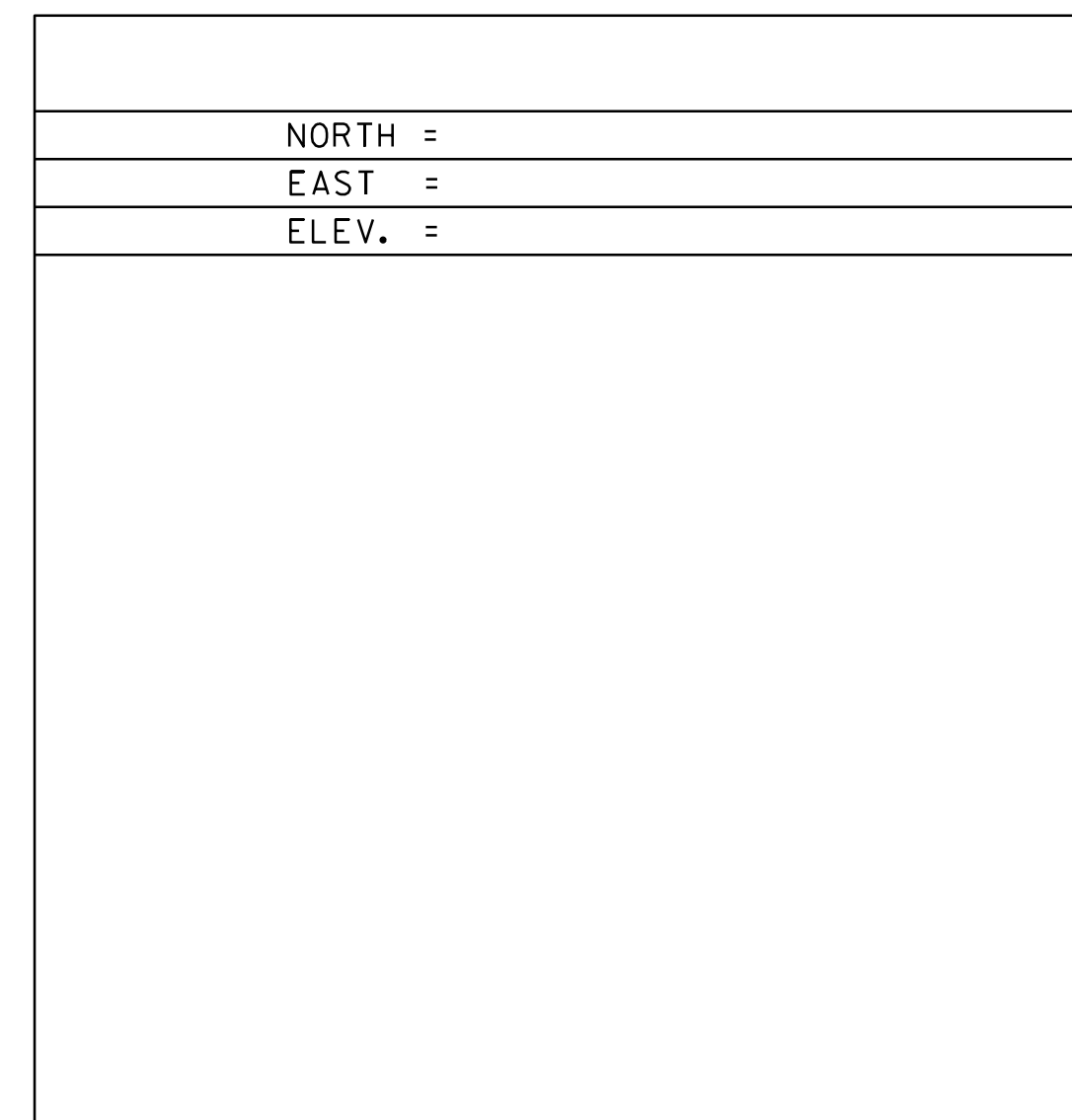
HVCTRL #3  
 NORTH = 841786.263  
 EAST = 1717292.788  
 ELEV. = 739.553



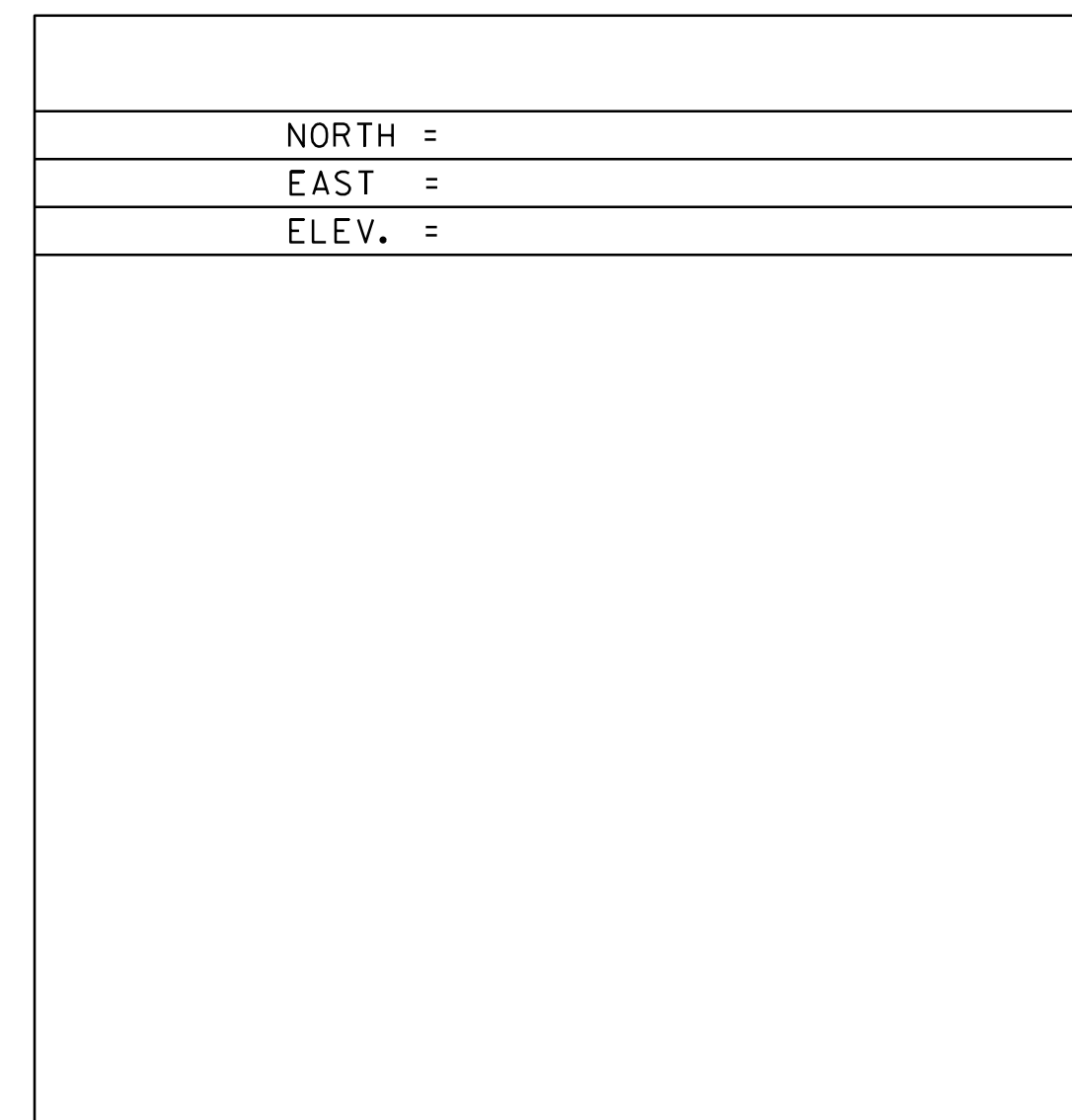
HVCTRL #4  
 NORTH = 841246.804  
 EAST = 1716948.059  
 ELEV. = 742.343



NORTH =  
 EAST =  
 ELEV. =



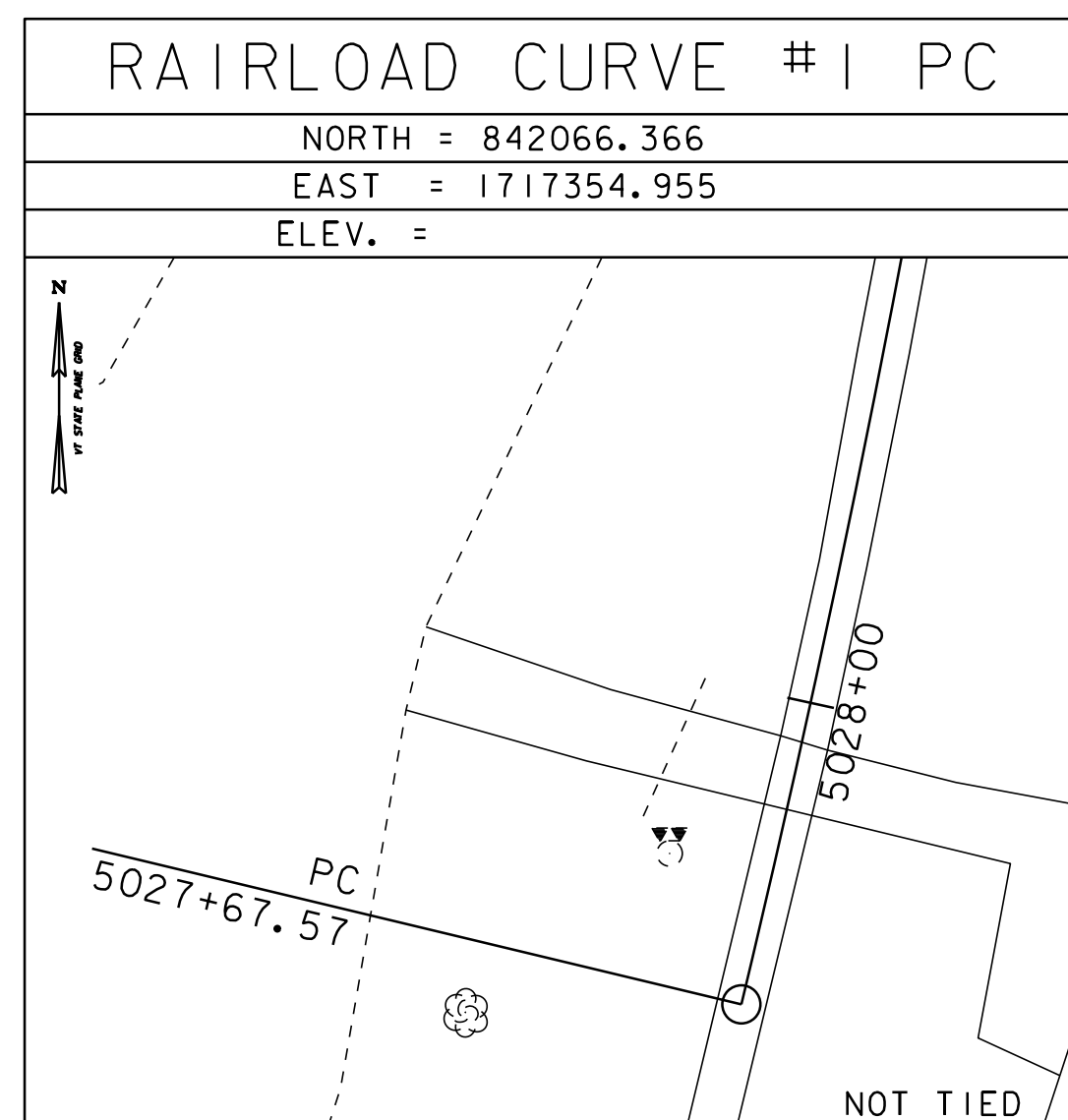
NORTH =  
 EAST =  
 ELEV. =



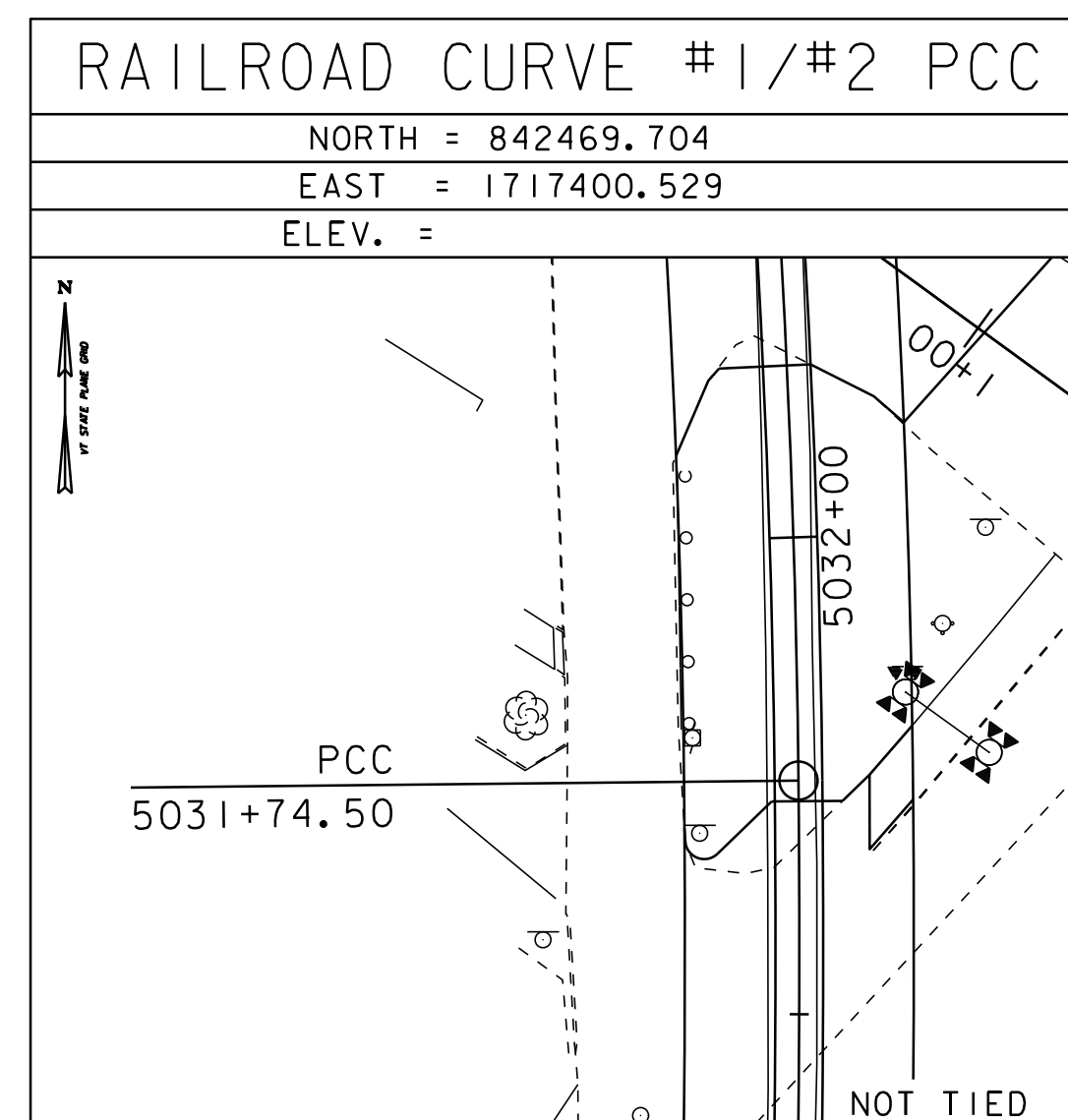
NORTH =  
 EAST =  
 ELEV. =

\* MAIN TRAVERSE COMPLETED 9/10/2010 BY R. GILMAN P.C & P. WINTERS

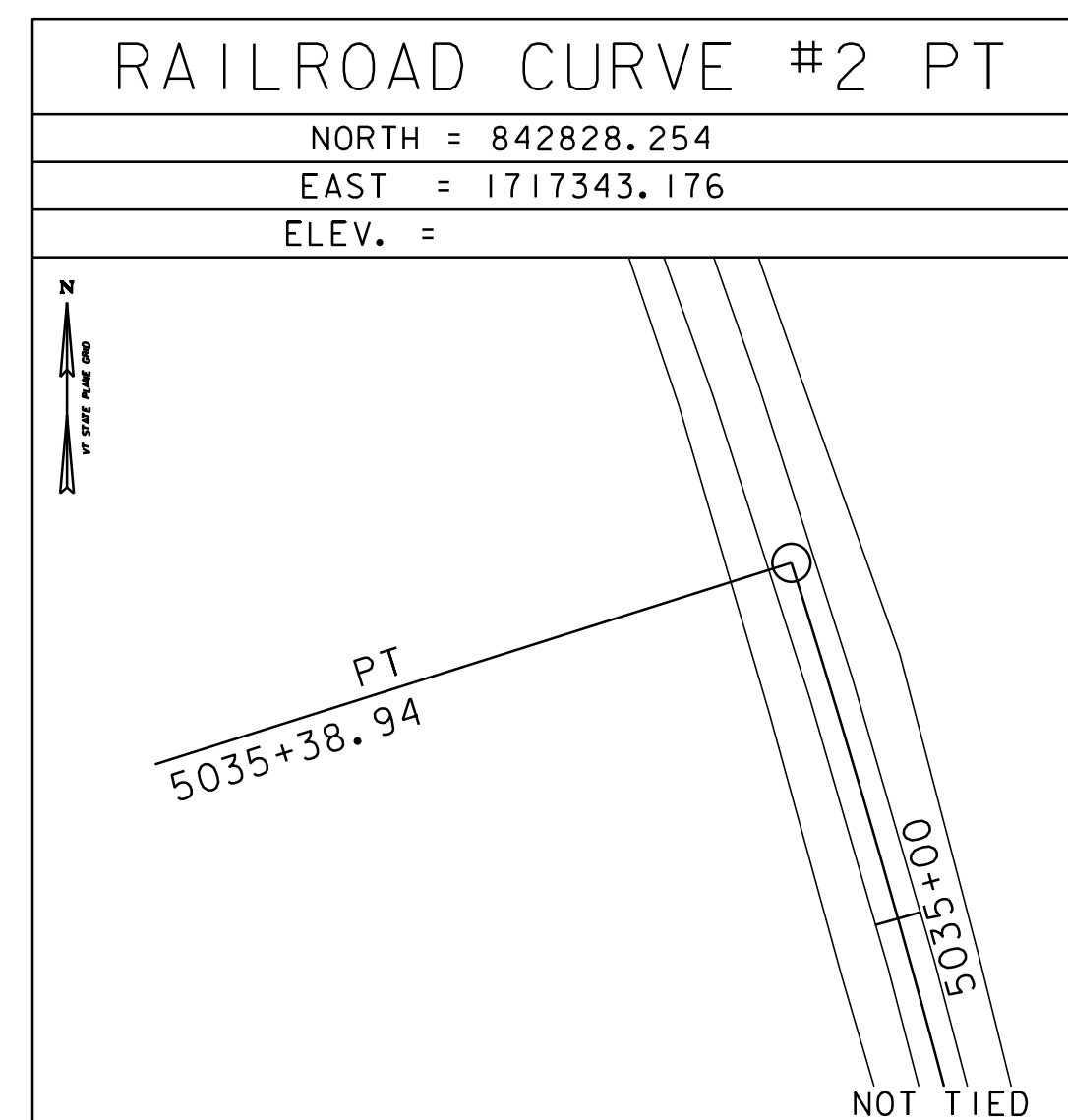
ALIGNMENT TIES



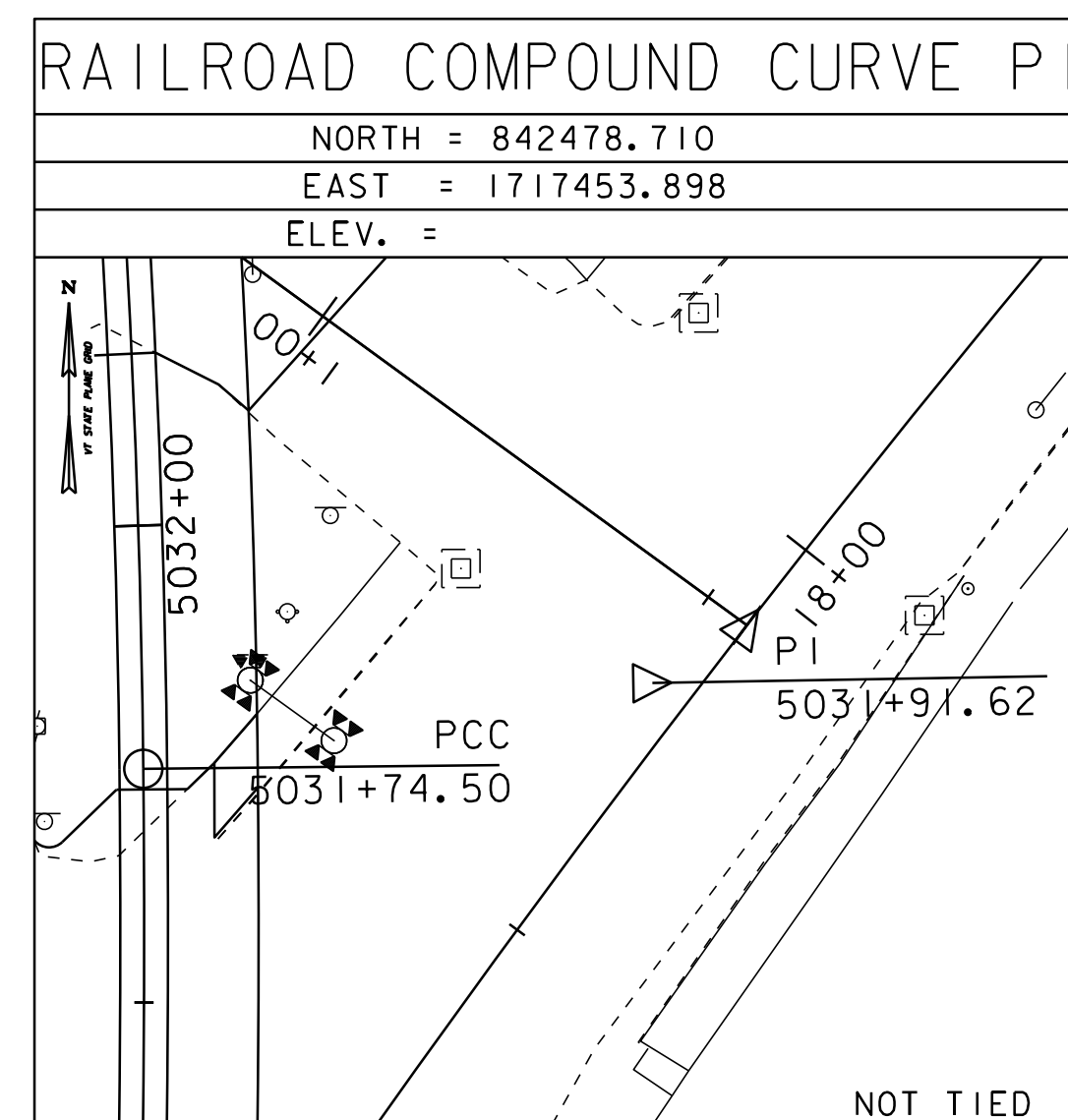
RAILROAD CURVE #1 PC  
 NORTH = 842066.366  
 EAST = 1717354.955  
 ELEV. =



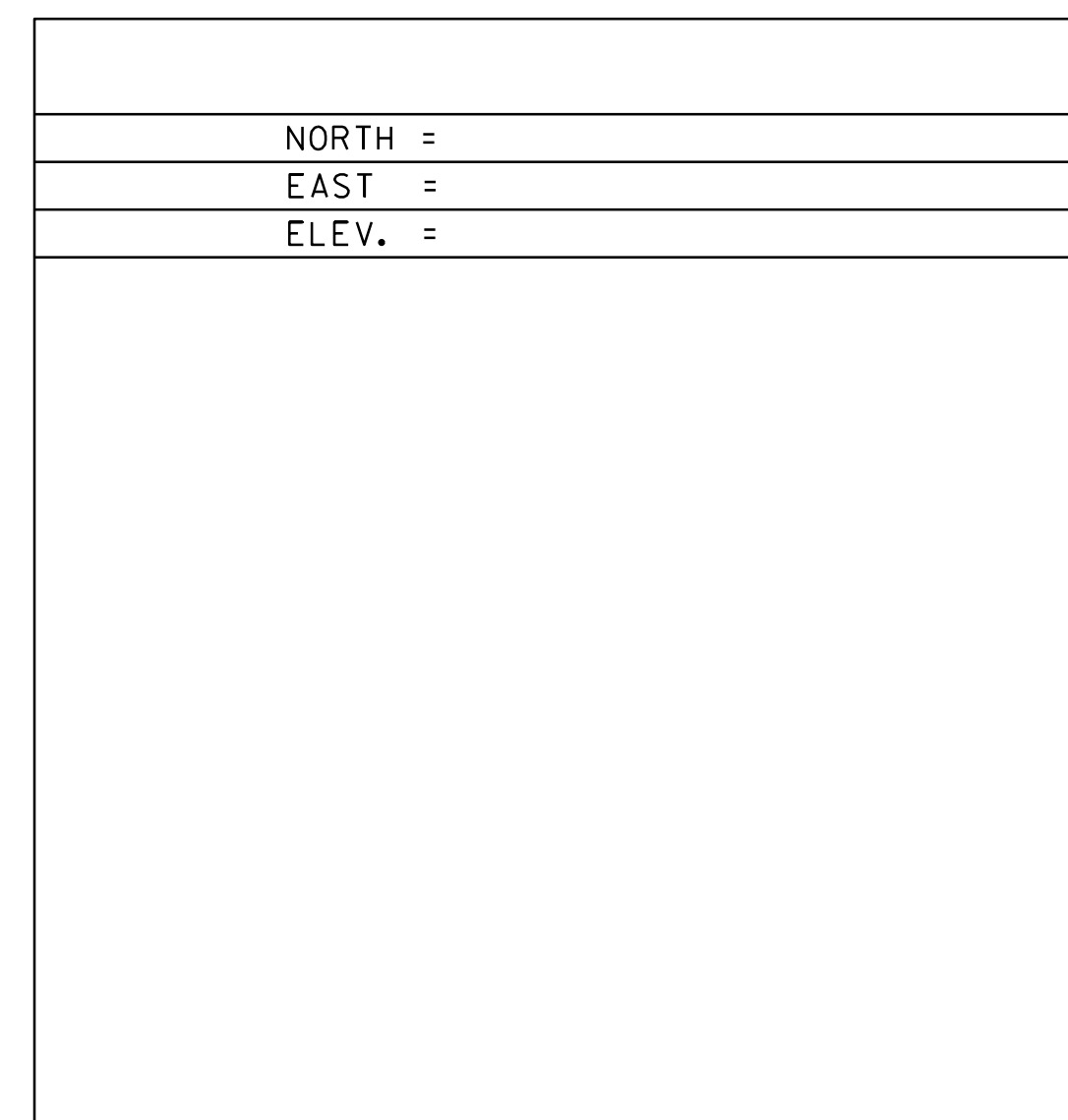
RAILROAD CURVE #1/#2 PCC  
 NORTH = 842469.704  
 EAST = 1717400.529  
 ELEV. =



RAILROAD CURVE #2 PT  
 NORTH = 842828.254  
 EAST = 1717343.176  
 ELEV. =



RAILROAD COMPOUND CURVE P1  
 NORTH = 842478.710  
 EAST = 1717453.898  
 ELEV. =



NORTH =  
 EAST =  
 ELEV. =

DATUM	
VERTICAL	NAVD 88
HORIZONTAL	NAD 83 (96)
ADJUSTMENT	COMPASS

<p>NOT TO SCALE</p> <p><b>RAILROAD CROSSING TIE SHEET</b></p>	PROJECT NAME: BARTON	PLOT DATE: 30-OCT-2013 17:0	
	PROJECT NUMBER: STP 2702(I)	DRAWN BY: R. BULLOCK	
	FILE NAME: p07c192.dgn	DESIGNED BY:	CHECKED BY:
	IPARM FILE: p07c192rrct.i		SHEET 66 OF 75