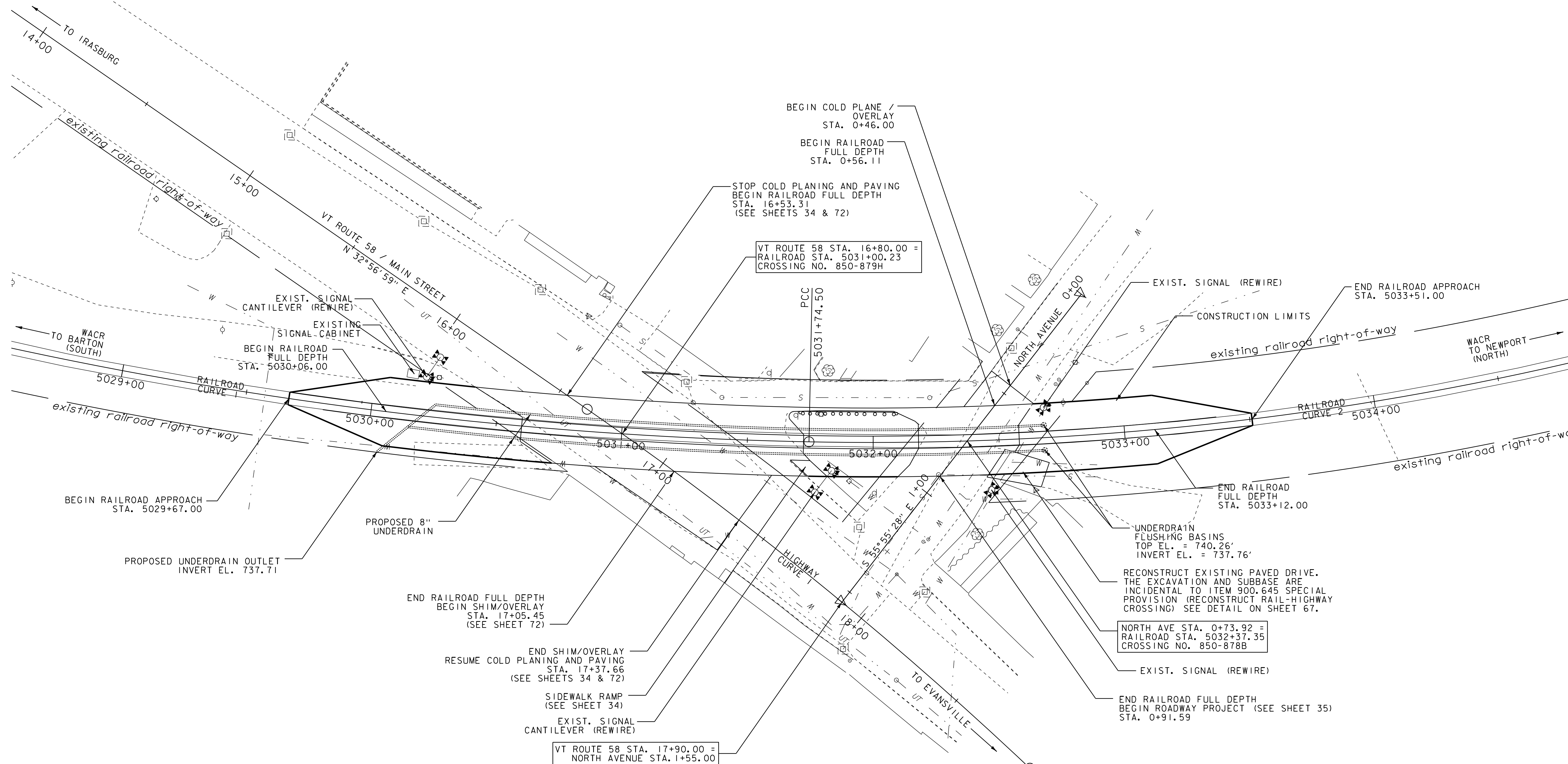


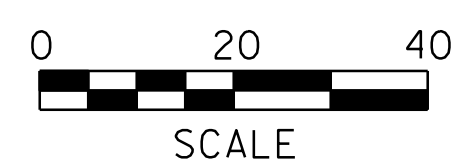
RAILROAD  
CURVE 1 DATA  
PC = 5027+67.57  
PI = 5029+72.06  
PCC = 5031+74.50  
R = 1654.40'  
Δ = 14°05'35", LT  
D = 3°27'48"  
L = 406.93

RAILROAD  
CURVE 2 DATA  
PCC = 5031+74.50  
PI = 5033+58.06  
PT = 5035+38.94  
R = 1230.00'  
Δ = 16°58'35", LT  
D = 4°39'30"  
L = 364.44

HIGHWAY  
CURVE 1 DATA  
PC = 16+62.99  
PI = 17+76.55  
PT = 18+89.67  
R = 1500.00'  
Δ = 8°39'31", RT  
D = 3°49'11"  
L = 226.68'



- NOTES:
1. LOCATIONS OF EXISTING UTILITIES ARE APPROXIMATE AND SHALL BE VERIFIED BY THE CONTRACTOR.
  2. RAILROAD RIGHT OF WAY IS APPROXIMATE, TAKEN FROM RAILROAD VALUATION PLAN.
  3. ADJUST ELEVATION OF VALVE BOXES IN PROPOSED PAVEMENT AREAS. PAID AS ITEM 629.20.
  4. SEE SHEETS 34 AND 35 FOR PROPOSED SIGNING AND PAVEMENT MARKINGS.
  5. SEE SHEET 71 FOR PROPOSED RAIL ELEVATIONS.



**RAILROAD  
CROSSING  
PLAN  
SHEET**

PROJECT NAME: BARTON	PLOT DATE: 30-OCT-2013 17:0
PROJECT NUMBER: STP 2702(I)	DRAWN BY: STANTEC
FILE NAME: p07c192.dgn	DESIGNED BY: STANTEC
IPARM FILE: p07c192rcp.i	CHECKED BY: STANTEC
	SHEET 65 OF 75