

DURABLE 4 INCH WHITE LINE  
 (ALL LINES WILL INCLUDE EDGE LINE BREAKS AND RADIi FOR SIDE ROADS)  
 STA. 37+50 TO 39+75.84, SOLID LT & RT

DURABLE 4 INCH YELLOW LINE  
 (ALL LINES WILL INCLUDE  $\odot$  BREAKS FOR SIDE ROADS)  
 STA. 37+50 TO 39+75.84, SOLID LT & RT

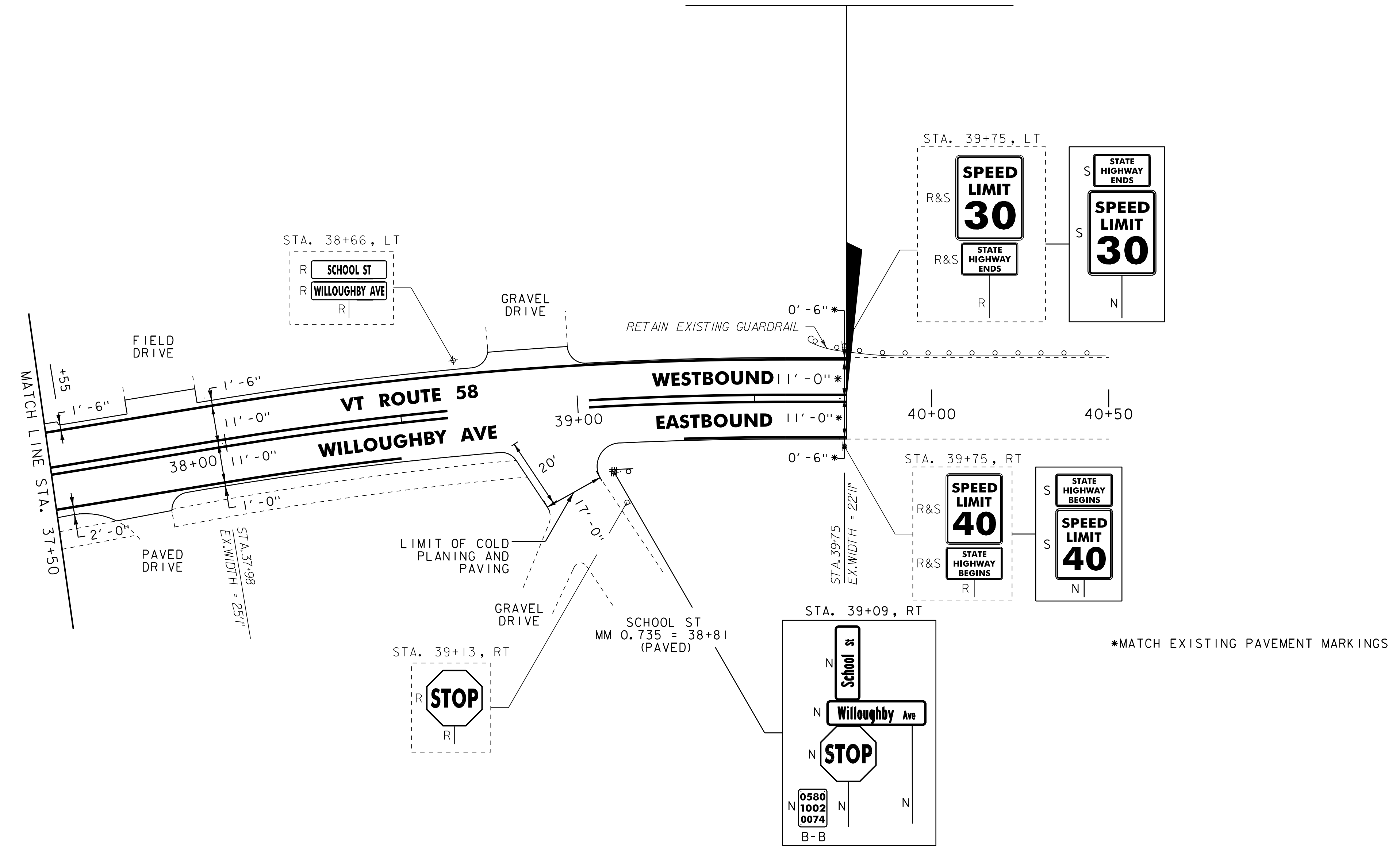
TEMPORARY 4 INCH WHITE LINE, PAINT  
 (ALL LINES WILL INCLUDE EDGE LINE BREAKS AND RADIi FOR SIDE ROADS)  
 STA. 37+50 TO 39+75.84, SOLID LT & RT

TEMPORARY 4 INCH YELLOW LINE, PAINT  
 (ALL LINES WILL INCLUDE  $\odot$  BREAKS FOR SIDE ROADS)  
 STA. 37+50 TO 39+75.84, SOLID LT & RT

REMOVING SIGNS  
 AS SHOWN - 7

ERECTING SALVAGED SIGNS  
 AS SHOWN - 4

**END STP 2702(1) VT ROUTE 58**  
**STA. 39+75.84 = MM 0.753**



NOTES:  
 1. FOR LEGENDS, SEE SHEET 16.  
 2. ALL EXISTING SIGNS NOT SHOWN SHALL BE RETAINED.  
 3. DURABLE MARKINGS DETAILED ON THIS SHEET ARE OPTION BID ITEMS. SEE SHEETS 5-6.

NOT TO SCALE

<b>PROJECT LAYOUT SHEET #22</b>	PROJECT NAME: BARTON	PLOT DATE: 30-OCT-2013 17:0
	PROJECT NUMBER: STP 2702(1)	DRAWN BY: STANTEC
	FILE NAME: p07c192.dgn	DESIGNED BY: STANTEC
	IPARM FILE: p07c192i22.i	CHECKED BY: STANTEC
		SHEET 38 OF 75

