

REHAB. DIS. CBS OR MHS, CLASS I OR II
 STA. 114+72, RT 114+97 LT
 STA. 114+97, RT
 STA. 115+09, RT
 STA. 116+68, RT

CHANGING ELEVATION OF SEWER MANHOLES
 STA. 114+73, LT
 STA. 114+89, RT

ADJUSTING ELEVATION OF VALVE BOX
 STA. 114+83, LT
 STA. 115+04, RT

CAST-IN-PLACE CONCRETE CURB, TYPE B
 STA. 115+11 TO 115+16, LT
 STA. 116+54, LT
 STA. 116+54, RT

REMOVAL OF EXISTING CURB
 STA. 115+14, LT
 STA. 116+54, LT
 STA. 116+54, RT

BITUMINOUS CONCRETE GUTTERS AND TRAFFIC ISLANDS
 STA. 115+06 TO 115+12, RT

PORTLAND CEMENT CONCRETE SIDEWALK, 5 INCH
 STA. 115+11 TO 115+16, LT
 STA. 115+12 TO 115+17, RT
 STA. 116+54, LT
 STA. 116+54, RT

DETECTABLE WARNING SURFACE
 STA. 115+14, LT
 STA. 115+14, RT
 STA. 116+54, LT
 STA. 116+54, RT

DURABLE 4 INCH WHITE LINE
 (ALL LINES WILL INCLUDE EDGE LINE BREAKS AND RADII FOR SIDE ROADS)
 STA. 113+50 TO 117+50, SOLID LT & RT
 STA. 114+79, SOLID LT (EDGE LINES, ELM ST)
 STA. 114+95, SOLID RT (EDGE LINES, WATER ST)

DURABLE 4 INCH YELLOW LINE
 (ALL LINES WILL INCLUDE @ BREAKS FOR SIDE ROADS)
 STA. 113+50 TO 117+50, SOLID LT & RT
 STA. 114+79, DOUBLE SOLID LT (ELM ST)
 STA. 114+95, DOUBLE SOLID RT (WATER ST)

DURABLE 8 INCH WHITE LINE
 STA. 116+91 TO 117+03, LT (HYDRANT)
 (SEE DETAIL ON SHEET 14)

DURABLE 24 INCH STOP BAR
 STA. 114+79, LT (ELM ST)
 STA. 114+95, RT (WATER ST)

DURABLE LETTER OR SYMBOL
 STA. 114+79, LT "STOP" (ELM ST)
 STA. 114+95, RT "STOP" (WATER ST)

DURABLE CROSSWALK MARKING
 STA. 114+57 TO 115+08, LT
 STA. 115+14, LT - RT
 STA. 116+54, LT - RT

TEMPORARY 4 INCH WHITE LINE, PAINT
 (ALL LINES WILL INCLUDE EDGE LINE BREAKS AND RADII FOR SIDE ROADS)
 STA. 113+50 TO 117+50, SOLID LT & RT
 STA. 114+79, SOLID LT (EDGE LINES, ELM ST)
 STA. 114+95, SOLID RT (EDGE LINES, WATER ST)

TEMPORARY 4 INCH YELLOW LINE, PAINT
 (ALL LINES WILL INCLUDE @ BREAKS FOR SIDE ROADS)
 STA. 113+50 TO 117+50, SOLID LT & RT
 STA. 114+79, DOUBLE SOLID LT (ELM ST)
 STA. 114+95, DOUBLE SOLID RT (WATER ST)

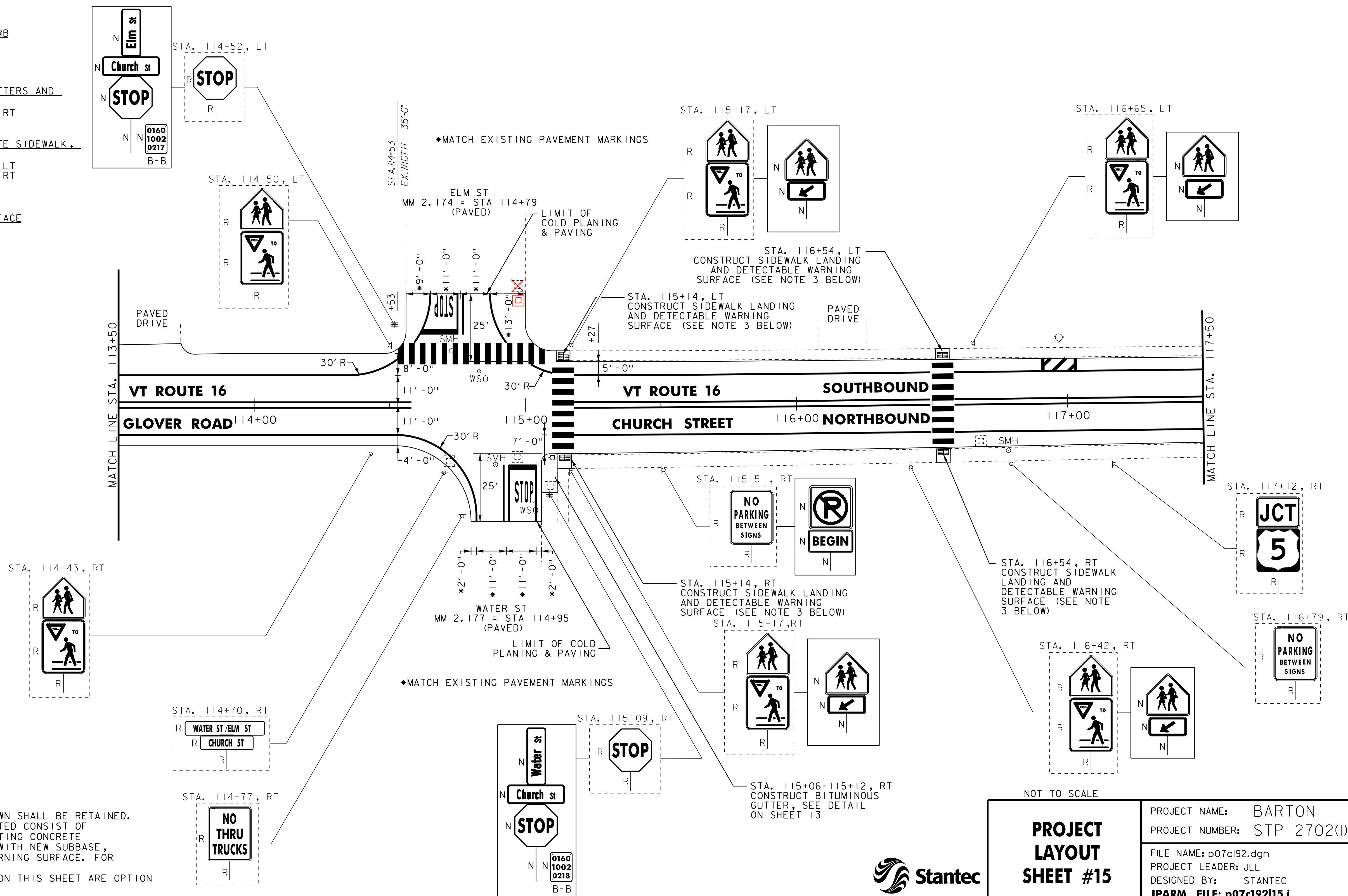
TEMPORARY 8 INCH WHITE LINE, PAINT
 STA. 116+91 TO 117+03, LT (HYDRANT)
 (SEE DETAIL ON SHEET 14)

TEMPORARY 24 INCH STOP BAR, PAINT
 STA. 114+79, LT (ELM ST)
 STA. 114+95, RT (WATER ST)

TEMPORARY LETTER OR SYMBOL, PAINT
 STA. 114+79, LT "STOP" (ELM ST)
 STA. 114+95, RT "STOP" (WATER ST)

TEMPORARY CROSSWALK MARKING, PAINT
 STA. 114+57 TO 115+08, LT
 STA. 115+14, LT - RT
 STA. 116+54, LT - RT

REMOVING SIGNS
 AS SHOWN - 21



NOTES:
 1. FOR LEGENDS, SEE SHEET 16.
 2. ALL EXISTING SIGNS NOT SHOWN SHALL BE RETAINED.
 3. THE SIDEWALK "LANDINGS" NOTED CONSIST OF REMOVING ONE PANEL OF EXISTING CONCRETE SIDEWALK AND REPLACING IT WITH NEW SUBBASE, CONCRETE AND DETECTABLE WARNING SURFACE. FOR PAY ITEMS, SEE SHEETS 7-10.
 4. DURABLE MARKINGS DETAILED ON THIS SHEET ARE OPTION BID ITEMS. SEE SHEETS 5-6.



NOT TO SCALE
PROJECT LAYOUT SHEET #15

PROJECT NAME: BARTON
 PROJECT NUMBER: STP 2702(1)
 FILE NAME: p07c192.dgn
 PROJECT LEADER: JLL
 DESIGNED BY: STANTEC
 IPARM FILE: p07c192115.i

PLOT DATE: 30-OCT-2013 17:0
 DRAWN BY: STANTEC
 CHECKED BY: STANTEC
 SHEET 31 OF 75