

STEEL BEAM GUARDRAIL, GALVANIZED  
 STA. 92+48.0 TO 93+39.0, LT  
 (CONNECT TO EXISTING SB GUARDRAIL AT  
 THE FIRST CONCRETE BRIDGE POST)

ANCHOR FOR STEEL BEAM RAIL  
 STA. 93+39.0, LT

REMOVAL AND DISPOSAL OF GUARDRAIL  
 STA. 92+48.0 TO 93+30.0, LT

ADJUSTING ELEVATION OF VALVE BOX  
 STA. 92+87, LT

DURABLE 4 INCH WHITE LINE  
 (ALL LINES WILL INCLUDE EDGE LINE BREAKS AND  
 RADI FOR SIDE ROADS)  
 STA. 92+18.88 TO 95+50, SOLID LT & RT  
 STA. 92+56, SOLID LT (EDGELINES, ROARING BROOK ROAD)

DURABLE 4 INCH YELLOW LINE  
 (ALL LINES WILL INCLUDE C BREAKS FOR SIDE ROADS)  
 STA. 92+18.88 TO 95+50, SOLID LT & RT  
 STA. 92+56, DOUBLE SOLID LT (ROARING BROOK ROAD)

DURABLE 24 INCH STOP BAR  
 STA. 92+56, LT (ROARING BROOK ROAD)

DURABLE LETTER OR SYMBOL  
 STA. 92+56, LT "STOP" (ROARING BROOK ROAD)

TEMPORARY 4 INCH WHITE LINE, PAINT  
 (ALL LINES WILL INCLUDE EDGE LINE BREAKS AND  
 RADI FOR SIDE ROADS)  
 STA. 92+18.88 TO 95+50, SOLID LT & RT  
 STA. 92+56, SOLID LT (EDGELINES, ROARING BROOK ROAD)

TEMPORARY 4 INCH YELLOW LINE, PAINT  
 (ALL LINES WILL INCLUDE C BREAKS FOR SIDE ROADS)  
 STA. 92+18.88 TO 95+50, SOLID LT & RT  
 STA. 92+56, DOUBLE SOLID LT (ROARING BROOK ROAD)

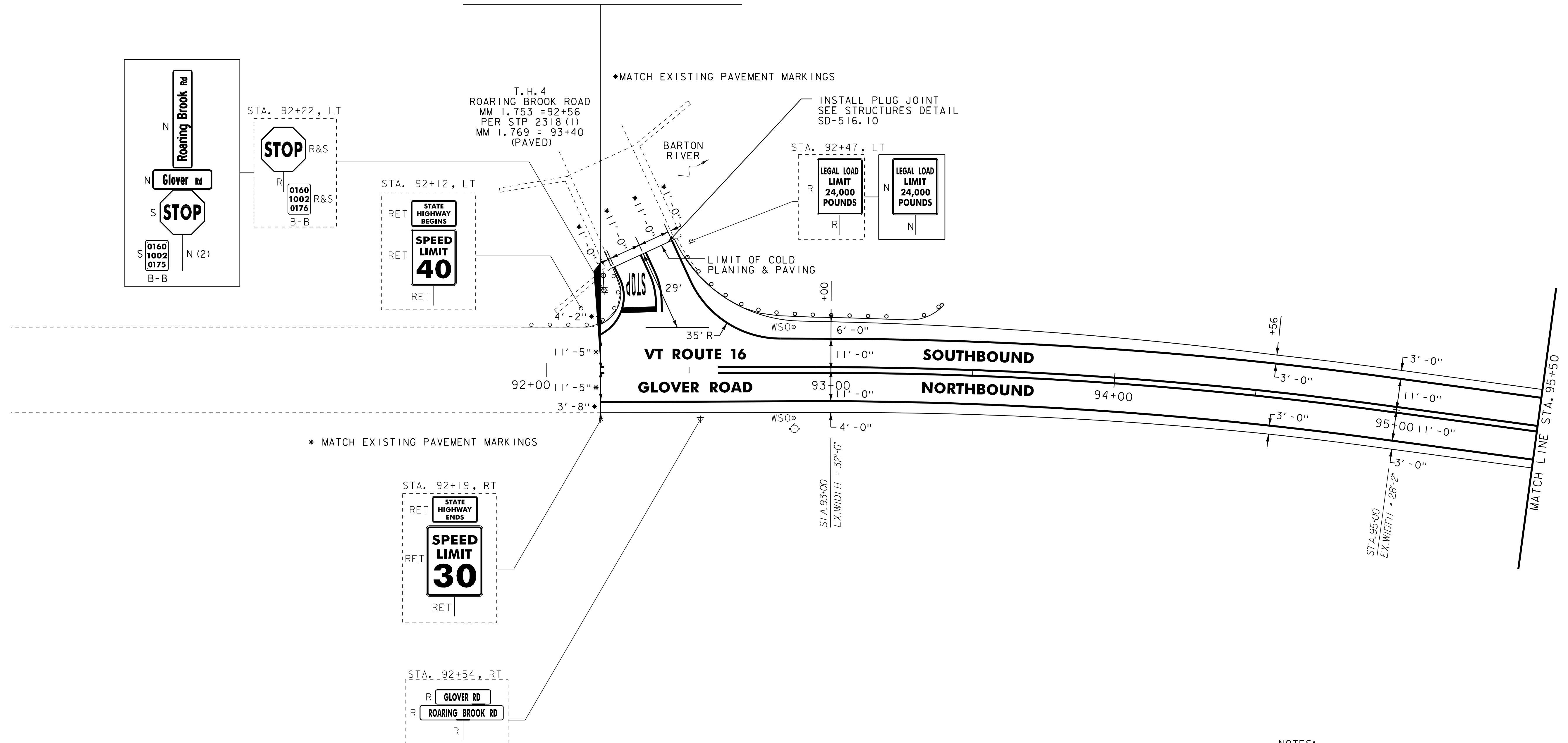
TEMPORARY 24 INCH STOP BAR, PAINT  
 STA. 92+56, LT (ROARING BROOK ROAD)

TEMPORARY LETTER OR SYMBOL, PAINT  
 STA. 92+56, LT "STOP" (ROARING BROOK ROAD)

REMOVING SIGNS  
 AS SHOWN - 5

ERECTING SALVAGED SIGNS  
 AS SHOWN - 2

**BEGIN STP 2702(1) VT ROUTE 16**  
**STA. 92+18.88 = MM 1.746**



NOTES:  
 1. FOR LEGENDS, SEE SHEET 16.  
 2. ALL EXISTING SIGNS NOT SHOWN SHALL BE RETAINED.  
 3. DURABLE MARKINGS DETAILED ON THIS SHEET ARE OPTION  
 BID ITEMS. SEE SHEETS 5-6.

NOT TO SCALE

<b>PROJECT LAYOUT SHEET #11</b>	PROJECT NAME: BARTON	
	PROJECT NUMBER: STP 2702(1)	
	FILE NAME: p07c192.dgn	PLOT DATE: 30-OCT-2013 17:0
	PROJECT LEADER: JLL	DRAWN BY: STANTEC
DESIGNED BY: STANTEC	CHECKED BY: STANTEC	
IPARM FILE: p07c192111.i		SHEET 27 OF 75

