

REHAB, Dis, CBs OR MHS, CLASS 1 OR 11
 STA. 291+26, LT
 STA. 292+15, LT
 STA. 293+26, LT

CAST-IN-PLACE CONCRETE CURB, TYPE B
 STA. 291+89 TO 292+05, LT
 STA. 292+29 TO 292+37, LT

REMOVAL OF EXISTING CURB
 STA. 291+97, LT
 STA. 292+33, LT

PORTLAND CEMENT CONCRETE SIDEWALK,
 5 INCH
 STA. 291+89 TO 292+05, LT
 STA. 292+29 TO 292+37, LT

DETECTABLE WARNING SURFACE
 STA. 291+97, LT
 STA. 292+33, LT

DURABLE 4 INCH WHITE LINE
 (ALL LINES WILL INCLUDE EDGE LINE BREAKS AND
 RADII FOR SIDE ROADS)
 STA. 289+50 TO 294+00, SOLID LT & RT
 STA. 291+70 TO 292+00, SOLID LT (DIAGONALS)
 STA. 292+41 TO 292+71, SOLID LT (DIAGONALS)

DURABLE 4 INCH YELLOW LINE
 (ALL LINES WILL INCLUDE @ BREAKS FOR SIDE ROADS)
 STA. 289+50 TO 294+00, SOLID LT & RT

DURABLE 8 INCH WHITE LINE
 STA. 293+21 TO 293+33, LT (HYDRANT)
 (SEE DETAIL ON SHEET 14)

DURABLE CROSSWALK MARKING
 STA. 292+14, LT

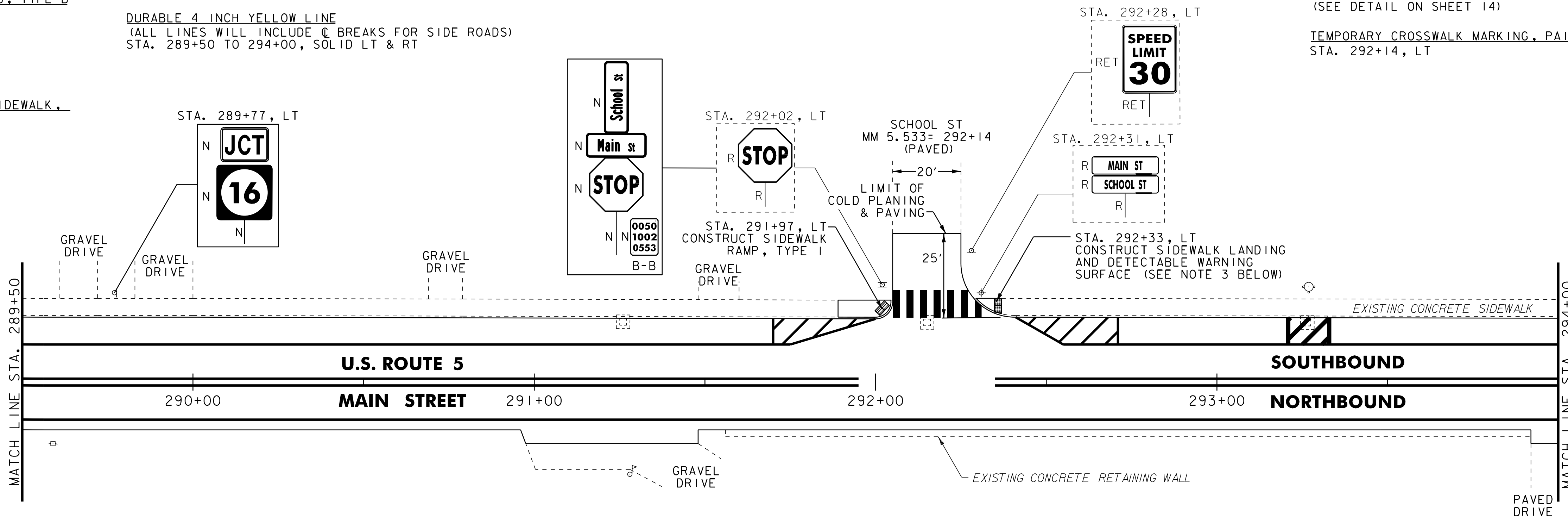
TEMPORARY 4 INCH WHITE LINE, PAINT
 (ALL LINES WILL INCLUDE EDGE LINE BREAKS AND
 RADII FOR SIDE ROADS)
 STA. 289+50 TO 294+00, SOLID LT & RT
 STA. 291+70 TO 292+00, SOLID LT (DIAGONALS)
 STA. 292+41 TO 292+71, SOLID LT (DIAGONALS)

TEMPORARY 4 INCH YELLOW LINE, PAINT
 (ALL LINES WILL INCLUDE @ BREAKS FOR SIDE ROADS)
 STA. 289+50 TO 294+00, SOLID LT & RT

TEMPORARY 8 INCH WHITE LINE, PAINT
 STA. 293+21 TO 293+33, LT (HYDRANT)
 (SEE DETAIL ON SHEET 14)

TEMPORARY CROSSWALK MARKING, PAINT
 STA. 292+14, LT

REMOVING SIGNS
 AS SHOWN - 3



REHAB, Dis, CBs OR MHS, CLASS 1 OR 11
 STA. 294+05, LT
 STA. 294+08, RT
 STA. 294+94, LT
 STA. 296+01, RT
 STA. 296+32, LT
 STA. 297+37, LT
 STA. 297+87, RT

CAST-IN-PLACE CONCRETE CURB, TYPE B
 STA. 297+79 TO 297+86, LT

REMOVAL OF EXISTING CURB
 STA. 297+82, LT

PORTLAND CEMENT CONCRETE SIDEWALK,
 5 INCH
 STA. 297+66 TO 297+86, LT
 STA. 297+79 TO 297+85, RT

DETECTABLE WARNING SURFACE
 STA. 297+82, LT
 STA. 297+82, RT

DURABLE 4 INCH WHITE LINE
 (ALL LINES WILL INCLUDE EDGE LINE BREAKS AND
 RADII FOR SIDE ROADS)
 STA. 294+00 TO 298+00, SOLID LT & RT
 STA. 295+15 TO 295+31, SOLID LT (DIAGONALS)
 STA. 295+31 TO 296+82, SOLID LT (PARKING)
 STA. 296+82 TO 296+93, SOLID LT (DIAGONALS)
 STA. 297+48 TO 298+00, SOLID RT (DIAGONALS)

DURABLE 4 INCH YELLOW LINE
 (ALL LINES WILL INCLUDE @ BREAKS FOR SIDE ROADS)
 STA. 294+00 TO 298+00, SOLID LT & RT

DURABLE 8 INCH WHITE LINE
 STA. 297+33 TO 297+45, LT (HYDRANT)
 (SEE DETAIL ON SHEET 14)

DURABLE CROSSWALK MARKING
 STA. 297+82, LT - RT

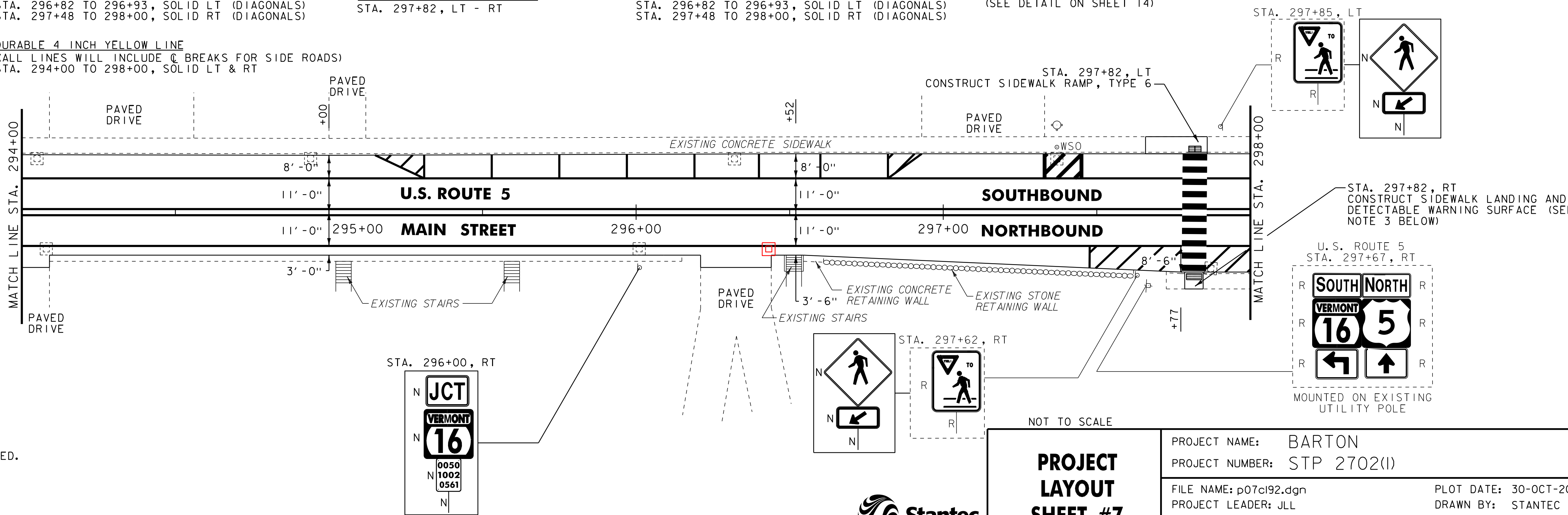
TEMPORARY 4 INCH WHITE LINE, PAINT
 (ALL LINES WILL INCLUDE EDGE LINE BREAKS AND
 RADII FOR SIDE ROADS)
 STA. 294+00 TO 298+00, SOLID LT & RT
 STA. 295+15 TO 295+31, SOLID LT (DIAGONALS)
 STA. 295+31 TO 296+82, SOLID LT (PARKING)
 STA. 296+82 TO 296+93, SOLID LT (DIAGONALS)
 STA. 297+48 TO 298+00, SOLID RT (DIAGONALS)

TEMPORARY 4 INCH YELLOW LINE, PAINT
 (ALL LINES WILL INCLUDE @ BREAKS FOR SIDE ROADS)
 STA. 294+00 TO 298+00, SOLID LT & RT

TEMPORARY 8 INCH WHITE LINE, PAINT
 STA. 297+33 TO 297+45, LT (HYDRANT)
 (SEE DETAIL ON SHEET 14)

TEMPORARY CROSSWALK MARKING, PAINT
 STA. 297+82, LT - RT

REMOVING SIGNS
 AS SHOWN - 8



- NOTES:
- FOR LEGENDS, SEE SHEET 16.
 - ALL EXISTING SIGNS NOT SHOWN SHALL BE RETAINED.
 - THE SIDEWALK "LANDINGS" NOTED CONSIST OF REMOVING ONE PANEL OF EXISTING CONCRETE SIDEWALK AND REPLACING IT WITH NEW SUBBASE, CONCRETE AND DETECTABLE WARNING SURFACE. FOR PAY ITEMS, SEE SHEETS 7-10.
 - DURABLE MARKINGS DETAILED ON THIS SHEET ARE OPTION BID ITEMS. SEE SHEETS 5-6.



PROJECT LAYOUT SHEET #7

PROJECT NAME: BARTON
 PROJECT NUMBER: STP 2702(I)

FILE NAME: p07c192.dgn
 PROJECT LEADER: JLL
 DESIGNED BY: STANTEC
 IPARM FILE: p07c192i07.i

PLOT DATE: 30-OCT-2013 17:0
 DRAWN BY: STANTEC
 CHECKED BY: STANTEC
 SHEET 22 OF 75