

REHAB, Dis, CBs OR MHS, CLASS I OR II
 STA. 274+21, LT 278+18 LT
 STA. 275+32, LT
 STA. 275+46, RT
 STA. 277+98, LT
 STA. 278+22, RT

CHANGING ELEVATION OF SEWER MANHOLES
 STA. 274+41, LT
 STA. 275+57, LT
 STA. 278+18, LT

ADJUSTING ELEVATION OF VALVE BOX
 STA. 275+72, RT
 STA. 275+76, LT
 STA. 276+03, LT
 STA. 276+14, LT
 STA. 277+81, LT

DURABLE 4 INCH WHITE LINE
 (ALL LINES WILL INCLUDE EDGE LINE BREAKS AND RADIUS FOR SIDE ROADS)
 STA. 273+50 TO 279+50, SOLID LT & RT
 STA. 275+04 TO 275+39, SOLID LT (DIAGONALS)
 STA. 275+51, SOLID LT (EDGE LINES, DUCK POND RD)
 STA. 275+75 TO 276+12, SOLID LT (DIAGONALS)

DURABLE 4 INCH YELLOW LINE
 (ALL LINES WILL INCLUDE C BREAKS FOR SIDE ROADS)
 STA. 273+50 TO 279+50, SOLID LT & RT
 STA. 275+51, DOUBLE SOLID LT (DUCK POND RD)

DURABLE 8 INCH WHITE LINE
 STA. 277+90 TO 278+02, RT (HYDRANT)
 (SEE DETAIL ON SHEET 14)

DURABLE 24 INCH STOP BAR
 STA. 275+51, LT (DUCK POND RD)

DURABLE LETTER OR SYMBOL
 STA. 275+51, LT "STOP" (DUCK POND RD)

TEMPORARY 4 INCH WHITE LINE, PAINT
 (ALL LINES WILL INCLUDE EDGE LINE BREAKS AND RADIUS FOR SIDE ROADS)
 STA. 273+50 TO 279+50, SOLID LT & RT
 STA. 275+04 TO 275+39, SOLID LT (DIAGONALS)
 STA. 275+51, SOLID LT (EDGE LINES, DUCK POND RD)
 STA. 275+75 TO 276+12, SOLID LT (DIAGONALS)

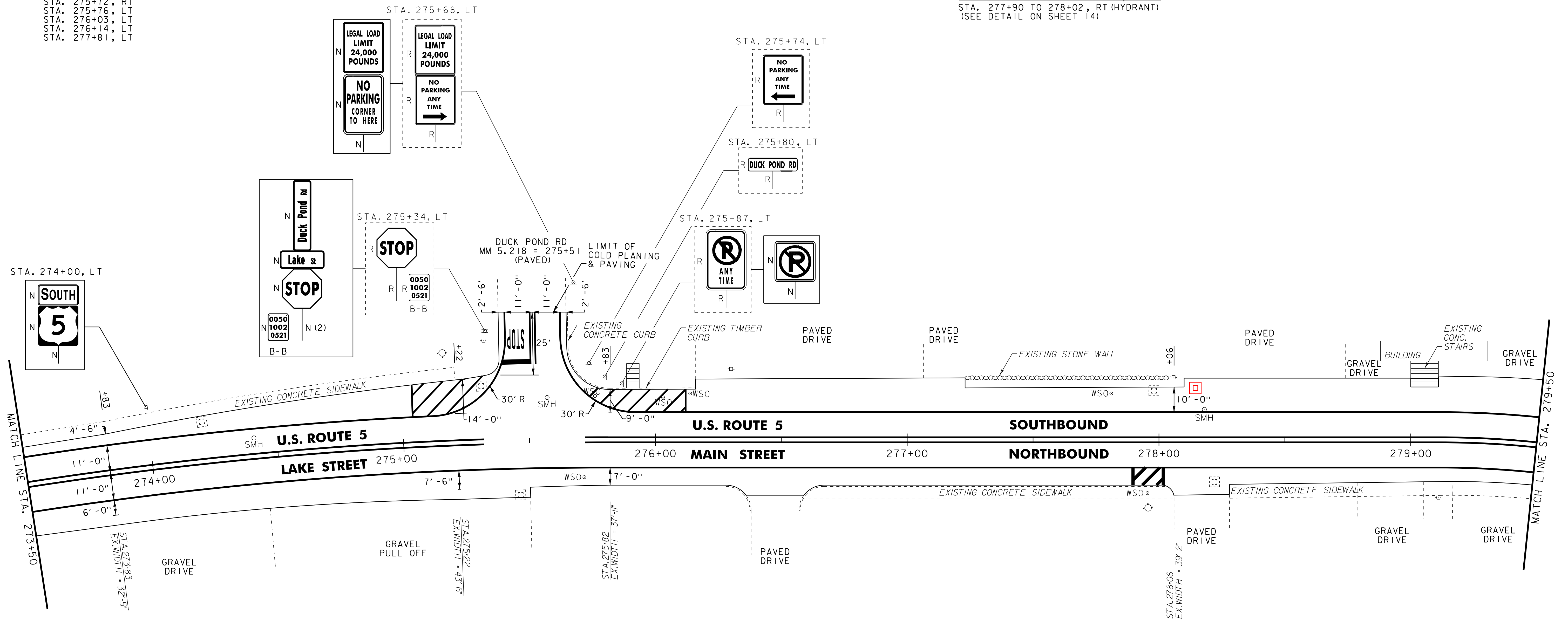
TEMPORARY 4 INCH YELLOW LINE, PAINT
 (ALL LINES WILL INCLUDE C BREAKS FOR SIDE ROADS)
 STA. 273+50 TO 279+50, SOLID LT & RT
 STA. 275+51, DOUBLE SOLID LT (DUCK POND RD)

TEMPORARY 8 INCH WHITE LINE, PAINT
 STA. 277+90 TO 278+02, RT (HYDRANT)
 (SEE DETAIL ON SHEET 14)

TEMPORARY 24 INCH STOP BAR, PAINT
 STA. 275+51, LT (DUCK POND RD)

TEMPORARY LETTER OR SYMBOL, PAINT
 STA. 275+51, LT "STOP" (DUCK POND RD)

REMOVING SIGNS
 AS SHOWN - 7



NOTES:
 1. FOR LEGENDS, SEE SHEET 16.
 2. ALL EXISTING SIGNS NOT SHOWN SHALL BE RETAINED.
 3. DURABLE MARKINGS DETAILED ON THIS SHEET ARE OPTION BID ITEMS. SEE SHEETS 5-6.

NOT TO SCALE

PROJECT LAYOUT SHEET #4	PROJECT NAME: BARTON	PLOT DATE: 30-OCT-2013 17:0
	PROJECT NUMBER: STP 2702(I)	DRAWN BY: STANTEC
	FILE NAME: p07c192.dgn	DESIGNED BY: STANTEC
	IPARM FILE: p07c192i04.i	CHECKED BY: STANTEC
		SHEET 19 OF 75

