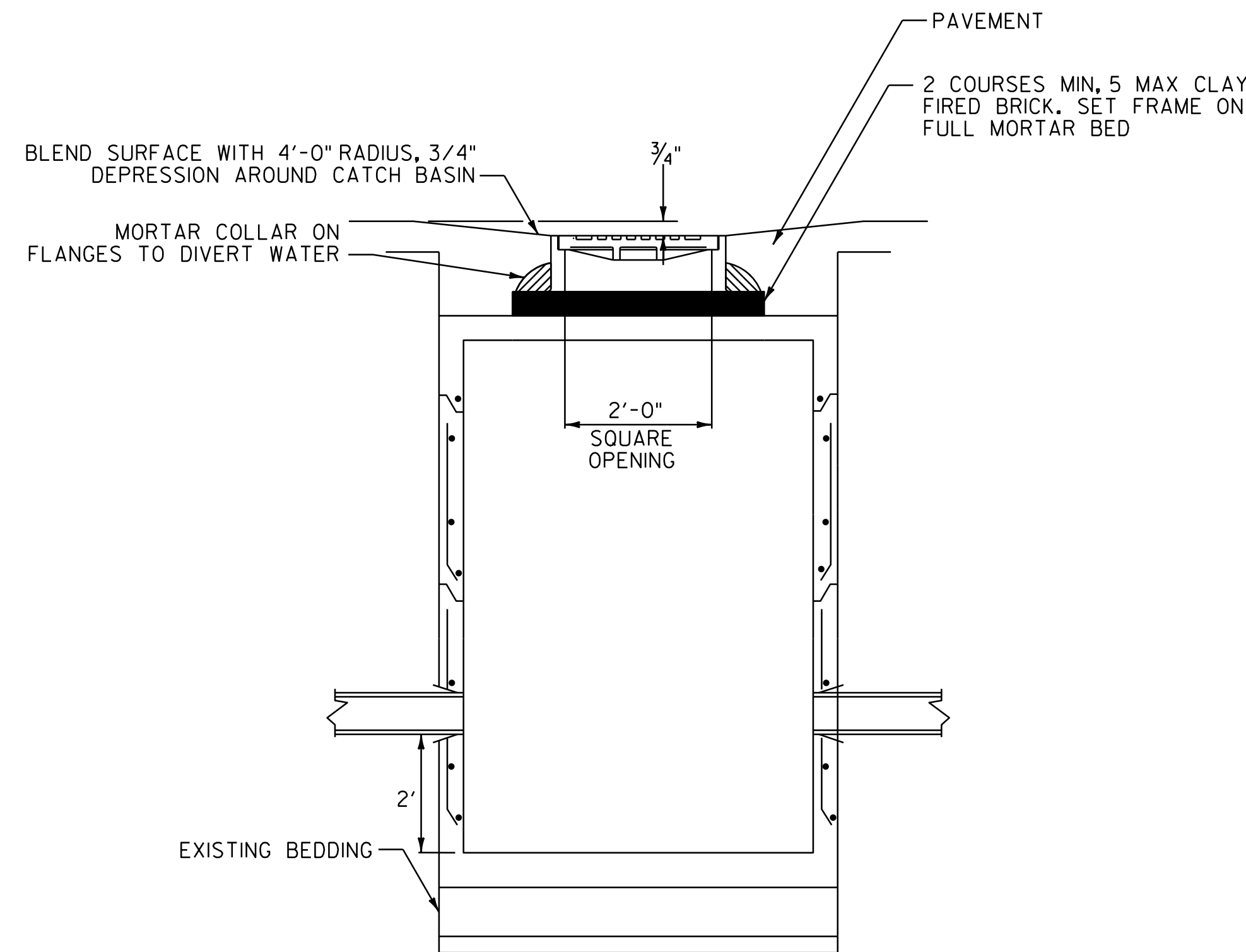


**EXISTING CULVERT INVENTORY TABLE**  
(FOR INFORMATION ONLY)

STATION	CULVERT SIZE	CULVERT MATERIAL	COMMENT
U.S. ROUTE 5			
302+48	12' x 6.5'	CONC.	BR I63
312+40	18"	RCP	CONC. HEADWALL
315+90	12"	RCP	
VT ROUTE 58			
25+50	12"	DIP	
28+34	15"	CMP	
30+50	24"	CMP	



**REHAB. DI'S, CB'S, & MH'S DETAIL**  
(ITEMS 604.412 AND 604.415 IN PAVEMENT AREAS)

**REHAB. DI'S, CB'S or MH'S, CLASS I OR II**  
(ITEM 604.412 OR 604.415)

STATION	POSITION	DESCRIPTION
<b>U.S. ROUTE 5</b>		
261+53	LT.	DI
263+13	LT.	DI
264+62	LT.	DI
265+48	LT.	DI
266+82	LT.	DI
267+86	LT.	DI
268+07	LT.	DI
269+40	LT.	DI
271+24	LT.	DI
274+21	LT.	DI
275+32	LT.	DI
275+46	RT.	DI
277+98	LT.	DI
278+22	RT.	DI
280+30	RT.	DI
285+89	LT.	DI
286+05	RT.	DI
286+69	LT.	DI
288+90	LT.	DI
291+26	LT.	DI
292+15	LT.	DI
293+26	LT.	DI
294+05	LT.	DI
294+08	RT.	DI
294+94	LT.	DI
296+01	RT.	DI
296+32	LT.	DI
297+37	LT.	DI
297+87	RT.	DI
298+19	LT.	DI
298+81	RT.	DI
301+37	RT.	DI
301+75	LT.	DI
302+05	RT.	DI
302+23	LT.	DI
302+63	RT.	DI
303+62	RT.	DI
305+02	RT.	DI
305+51	LT.	DI
306+15	RT.	DI
306+98	RT.	DI
<b>VT ROUTE 16</b>		
101+83	LT.	DI
108+60	LT.	DI
111+84	LT.	DI
113+18	LT.	DI
114+72	RT.	DI
114+97	RT.	DI
115+09	RT.	DI
116+68	RT.	DI
117+97	RT.	DI
118+15	RT.	DI
120+62	RT.	DI
121+86	RT.	DI
122+09	LT.	DI
123+23	RT.	DI
124+31	RT.	DI
<b>VT ROUTE 58</b>		
9+43	LT.	DI
10+63	LT.	DI
11+57	LT.	DI
12+01	LT.	DI
12+74	LT.	DI
13+32	LT.	DI
13+37	LT.	DI
13+72	LT.	DI
14+07	LT.	DI
14+78	LT.	DI
15+04	LT.	DI
15+05	RT.	DI
15+64	LT.	DI
16+20	LT.	DI
16+85	LT.	DI
17+77	LT.	DI
18+02	RT.	DI
18+13	LT.	DI
19+64	LT.	DI
19+87	RT.	DI
25+16	RT.	DI
30+50	RT.	DI
34+03	RT.	DI
34+79	LT.	DI
35+96	RT.	DI
36+21	RT.	DI

**CHANGING ELEVATION OF SEWER MANHOLES**  
(ITEM 604.42)

STATION	POSITION	DESCRIPTION
<b>U.S. ROUTE 5</b>		
258+60	LT.	SMH
258+70	LT.	SMH
261+73	LT.	SMH
263+39	LT.	SMH
273+37	RT.	SMH
274+41	LT.	SMH
275+57	LT.	SMH
278+18	LT.	SMH
280+34	LT.	SMH
281+18	LT.	SMH
282+96	LT.	SMH
288+93	RT.	SMH
298+36	RT.	SMH
299+00	RT.	SMH
300+10	RT.	SMH
303+89	LT.	SMH
305+25	RT.	SMH
<b>VT ROUTE 16</b>		
97+15	LT.	SMH
101+67	LT.	SMH
102+56	LT.	SMH
108+63	LT.	SMH
109+57	LT.	SMH
114+73	LT.	SMH
114+89	RT.	SMH
118+21	RT.	SMH
119+23	RT.	SMH
<b>VT ROUTE 58</b>		
12+80	LT.	SMH
17+00	LT.	SMH
17+91	LT.	SMH
20+61	RT.	SMH
25+30	LT.	SMH
30+21	LT.	SMH
33+03	LT.	SMH
34+19	LT.	SMH

**CHANGING ELEVATION OF DI'S, CB'S, OR MH'S**  
(ITEM 604.40)

STATION	POSITION	DESCRIPTION
<b>VT ROUTE 58</b>		
16+91	LT.	DMH
18+00	LT.	DMH
18+13	LT.	DMH
18+97	LT.	DMH

**CHANGING ELEVATION OF DI'S, CB'S, OR MH'S**  
(TO BE ADJUSTED BY OTHERS)

STATION	POSITION	DESCRIPTION
<b>VT ROUTE 58</b>		
15+94	RT.	TMH
18+26	RT.	TMH
19+83	LT.	TMH

**ADJUST ELEVATION OF VALVE BOX**  
(ITEM 629.20)

STATION	POSITION	DESCRIPTION
<b>U.S. ROUTE 5</b>		
259+18	RT.	WSO
275+72	RT.	WSO
275+76	LT.	WSO
276+03	LT.	WSO
276+14	LT.	WSO
277+81	LT.	WSO
279+92	RT.	WSO
281+00	RT.	WSO
284+73	RT.	WSO
285+15	LT.	WSO
285+47	LT.	WSO
285+69	LT.	WSO
288+11	LT.	WSO
300+96	RT.	WSO
304+16	LT.	WSO
305+17	RT.	WSO
305+39	RT.	WSO
310+85	LT.	WSO
<b>VT ROUTE 16</b>		
92+87	LT.	WSO
106+34	RT.	WSO
114+83	LT.	WSO
115+04	RT.	WSO
118+02	LT.	WSO
121+72	LT.	WSO
<b>VT ROUTE 58</b>		
10+38	LT.	WSO
10+79	RT.	WSO
10+82	RT.	WSO
10+83	LT.	WSO
11+91	LT.	WSO
14+94	LT.	WSO
15+06	LT.	WSO
17+99	LT.	WSO
18+04	LT.	WSO
18+05	LT.	WSO
20+38	RT.	WSO
20+55	LT.	WSO
22+53	LT.	WSO
24+25	RT.	WSO
25+34	LT.	WSO

NOT TO SCALE



**CULVERT & STRUCTURE INVENTORY SHEET**

PROJECT NAME: BARTON  
PROJECT NUMBER: STP 2702(I)

FILE NAME: p07c192.dgn  
PROJECT LEADER: JLL  
DESIGNED BY: STANTEC  
IPARM FILE: p07c192csd.i

PLOT DATE: 30-OCT-2013 17:0  
DRAWN BY: STANTEC  
CHECKED BY: STANTEC  
SHEET 12 OF 75